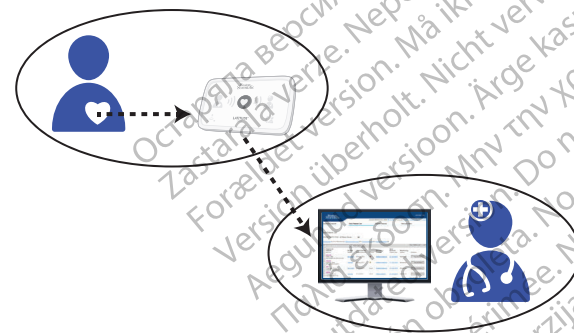


Helpful Information About the LATITUDE Communicator

What is it used for?

The LATITUDE Communicator is designed to collect information from your implanted device. Your Communicator then sends this data to the Clinician Website for access by your health care team to assist them in managing your ongoing care.



⚠ This is not an emergency medical system.

How does it work?

Once your Communicator is set up (*flip over for setup steps*), it will periodically check your device on a schedule set by your clinic. Sometimes this will happen automatically, and other times the Communicator may need your assistance. Simply press the flashing Heart button when it blinks to help complete the device check.



Where to place your Communicator?

- Within 3 meters (10 feet) from your bedside or where you sleep. If this is not possible, place your Communicator where you spend a considerable amount of time each day.
- At least 30 cm (12 in.) away from televisions, digital video disc (DVD) players, personal computers, modems, routers, microwaves, and other electronic equipment.
- Where you can sit comfortably and see the front of the Communicator.
- Depending on the connection method used:
 - **Cellular:** In a location where you get a good cellular signal.
 - **Internet:** Near, but no closer than 1 meter (3 feet), to your internet modem or router.

What do these lights mean?

If you see ...	It means ...	Do this ...
	The Communicator needs help completing a scheduled device check. <i>Note: This does not indicate a problem with your implanted device.</i>	Press the Heart button. Stay next to the Communicator until all lights are as shown in the next row.
	Data from your implanted device has been sent to the Clinician Website.	No further action needed.
	There is a potential problem that needs to be addressed by your health care provider.	Call your health care provider.
	Any Yellow Wave or Yellow Call Doctor icon means your Communicator is having a problem connecting or is not working properly.	Refer to the applicable error in the Troubleshooting section of your Patient Manual.

Flip over for setup steps.



Boston Scientific Corporation
4100 Hamline Avenue North
St. Paul, MN 55112-5798 USA

EC REP Guidant Europe NV/SA Boston Scientific
Green Square, Lambroekstraat 5D
1831 Diegem, Belgium

1.800.CARDIAC (227.3422)
Worldwide: +1.651.582.4000

www.bostonscientific.com
www.bostonscientific.com/patientlabeling

© 2020 Boston Scientific Corporation or its affiliates. All rights reserved.
LATITUDE is a trademark of Boston Scientific Corporation or its affiliates.

92436021-001 en Europe 2020-04

CE 2797



QUICK START GUIDE

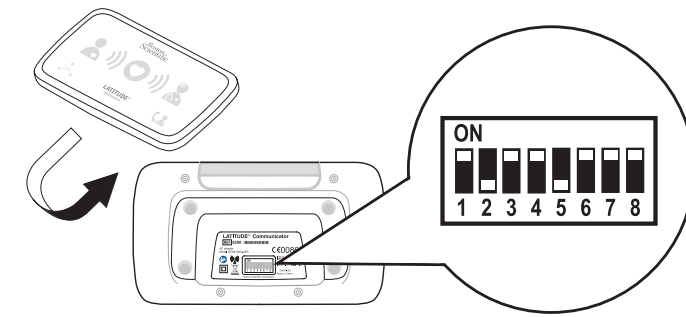
LATITUDE™ Communicator



Read before installing.

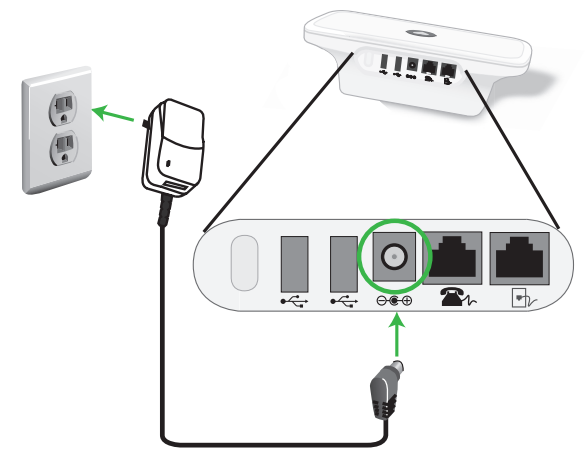
1 Confirm switch settings.

NOTE: This Quick Start Guide gives switch setting and setup instructions for cellular or internet connections only. If you are using a standard telephone connection, refer to your Patient Manual for this information.



Check the white switches numbered 1-8 on the bottom of your Communicator. If they match the switch settings shown above, no action is needed. If they do not match, slide them up or down to set them as shown.

2 Connect the power supply.



3 Identify which **one** connection method you will use to connect to the Clinician Website:

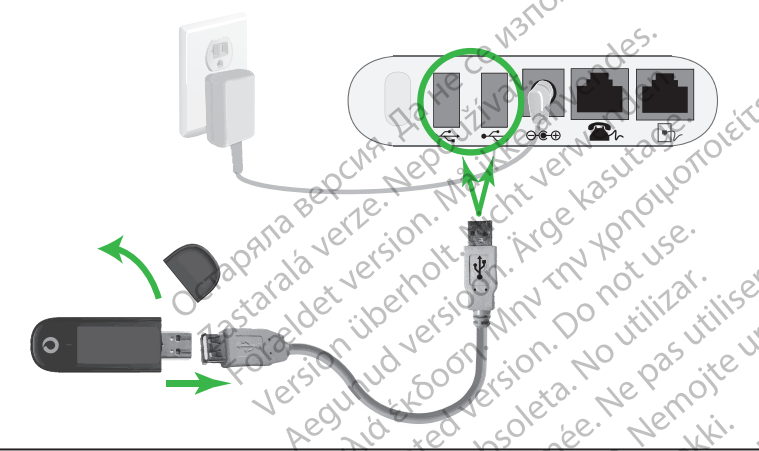
- A. Cellular **or**
- B. Internet

Then, connect cables for that **one** method as shown.

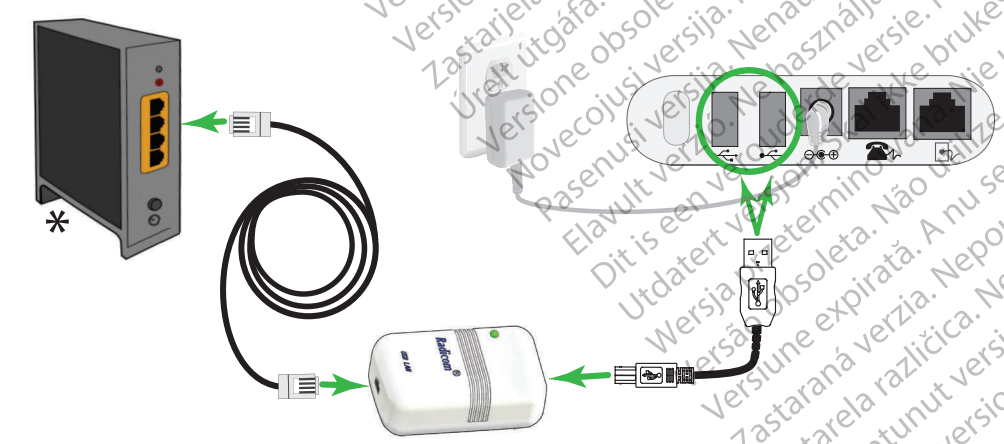
Refer to your Patient Manual for more details.

4 Connect the cables for your **one** connection method (A **or** B).

A. Cellular Connection, using a USB Cellular Adapter



or B. Internet Connection, using a USB Ethernet Adapter



* Internet router or modem

Keep your connection method plugged into your Communicator at all times.

This allows your Communicator to send the data collected from your implanted device to the Clinician Website for access by your health care provider.

5 Press the flashing Heart button on the LATITUDE Communicator to start the setup process.



6 Wait while data sends. This could take several minutes.

- Collecting data from your implanted device
 - Sending data
- If the Heart button flashes again, press it again.

7 Wait for software update.



A software update may be occurring. Wait several minutes for the Heart button to flash, then press it again. This may happen multiple times. Press the Heart button each time it flashes.

8 Success!



If the indicators are lit as shown above, setup is complete! The lights will turn off automatically after 2 minutes.

9 Keep your Communicator plugged in at all times.



This allows your Communicator to check your implanted device when scheduled by your health care provider.

? Need more help?

If you see any Yellow Wave or Yellow Call Doctor icon (as shown on the other side of this Guide), refer to the applicable error in the Troubleshooting section of your Patient Manual.

For more help, contact your health care provider or call LATITUDE Support at the number listed for your country in the Patient Manual.

Flip over for helpful information.

