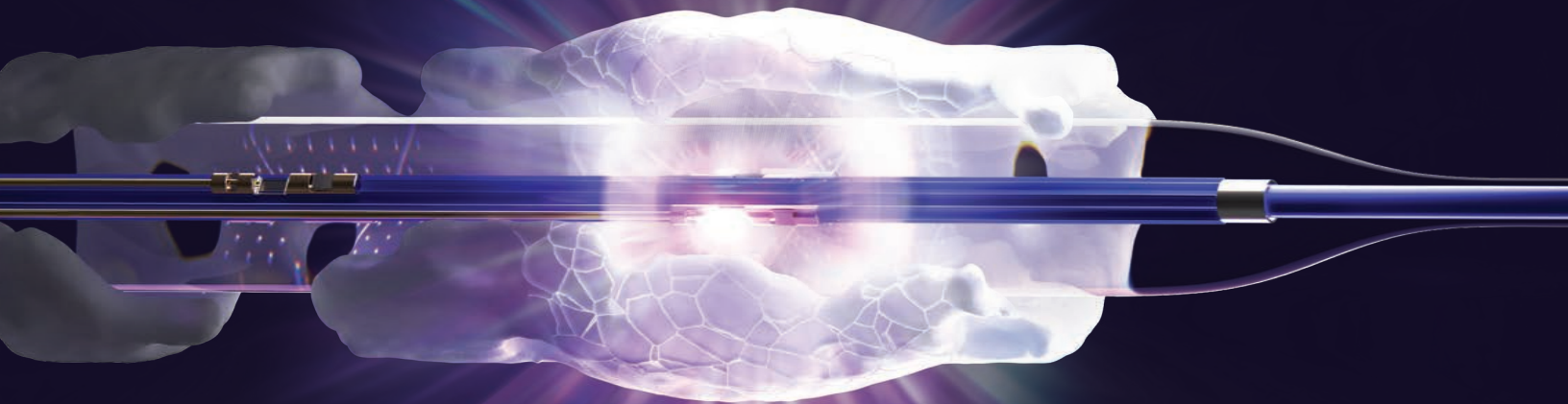


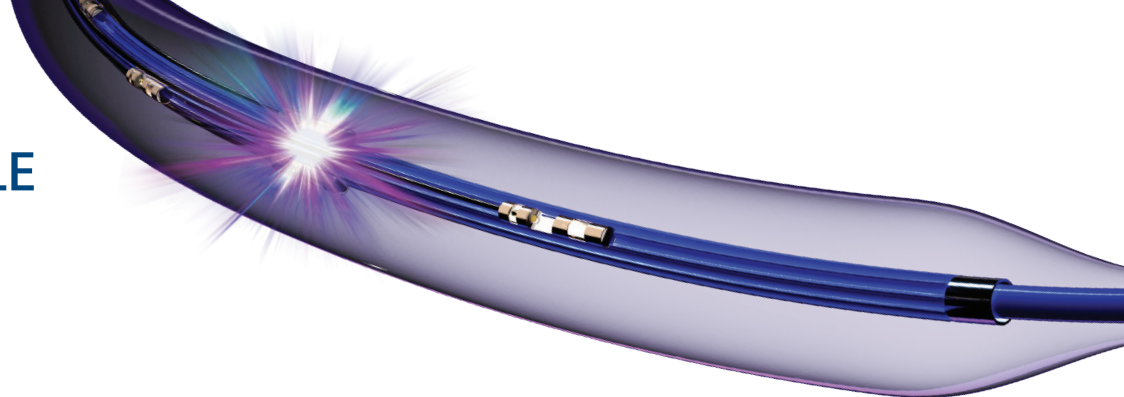


SEISMIQ™
Intravascular Lithotripsy System

PRECISION AT FULL FORCE



PUSHING WHAT'S POSSIBLE FOR IVL



COMPARED TO SHOCKWAVE E8

**+56% BETTER
TRACKABILITY**

**+30% BETTER
PUSHABILITY**

Boston Scientific Data on File. PAD OTW ATK+ Claims Test Report, REP-011761 Rev A. Measurements taken from SEISMIQ 60mm catheters, M5+ Shockwave catheters, and E8 Shockwave catheters.

RESTORE CLINICAL TRIALS

Feature	ATK Intent-to-treat (ITT) = 95 As treated (AT) = 95	BTK Intent-to-treat (ITT) = 20 As treated (AT) = 18
Design	Prospective, non-randomized, multicenter study	
Sites	10 sites	3 sites
IVL Use	95/95 (100%)	18/18 (100%)
Lesion Characteristics*		
Calcification Severity (PARC)	91.6%	83.3%
Avg. Lesion Length (mm)	96.0 ± 37.5	68.6 ± 39.6
Initial Diameter Stenosis (%)	93.7 ± 7.2	91.4 ± 8.8
CTO‡	32 (33.7)	6 (30.0%)
Final Diameter Stenosis (%)	21.2 ± 8.4	22.8 ± 11.5
Acute Gain (mm)	3.2 ± 0.9	1.3 ± 0.6
Procedural Details		
Pre-Dilatation	25 (26.3%)	4 (22.2%)
Post-Dilatation	17 (17.9%)	3 (16.7%)
Stent	3 (3.2%)	0 (0%)
Primary Safety Endpoint	100% freedom from MAE at 30 days	100% freedom from MAE at 30 days
Primary Efficacy Endpoint	100% with residual diameter stenosis <50% post-treatment	100% with acute reduction in percent diameter stenosis of target lesion
Conclusion	Met all primary endpoints; supports safety & efficacy	Demonstrated safety and effectiveness in complex BTK lesions

* As treated group ‡ Calculated by Angiographic Core Lab

A WHOLE NEW LEVEL OF CONTROL

Deliver the most consistent acoustic pressure across every emitter and target even the most challenging lesions with precision and force.



120
PULSES

+

120
PULSES

+

120
PULSES

+

Navigate confidently

Lower tracking force, improved flexibility and enhanced kink resistance to cross more complex anatomy.

Select your pulses

Turn emitters on or off with a touch to preserve pulses for use elsewhere in the vessel.

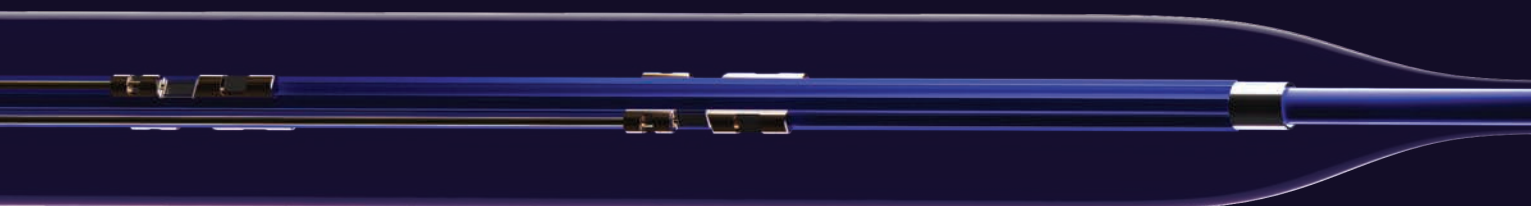
Direct your therapy

360-degree radiopaque emitter coverage lets you align placement against the lesion for direct impact.

Disrupt calcium on sight

Level up your IVL treatment with the next-generation therapy engineered to target complex lesions with maximum impact.

SEISMIQ™ combines advanced deliverability, enhanced visibility and more consistent acoustic pressure to get the most of every pulse. Every detail is purposefully designed to give physicians control, whether navigating challenging anatomies or delivering targeted therapy with clarity and precision.



120
PULSES

+

120
PULSES

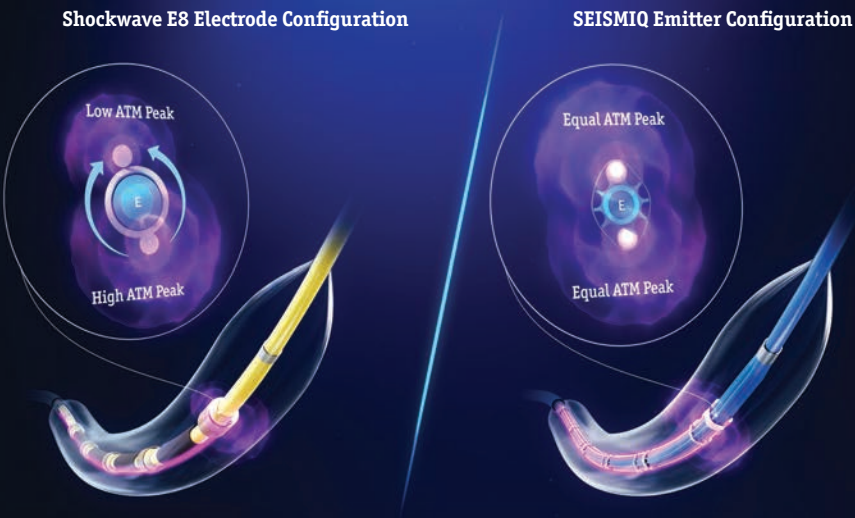
=

600
PULSES
TOTAL

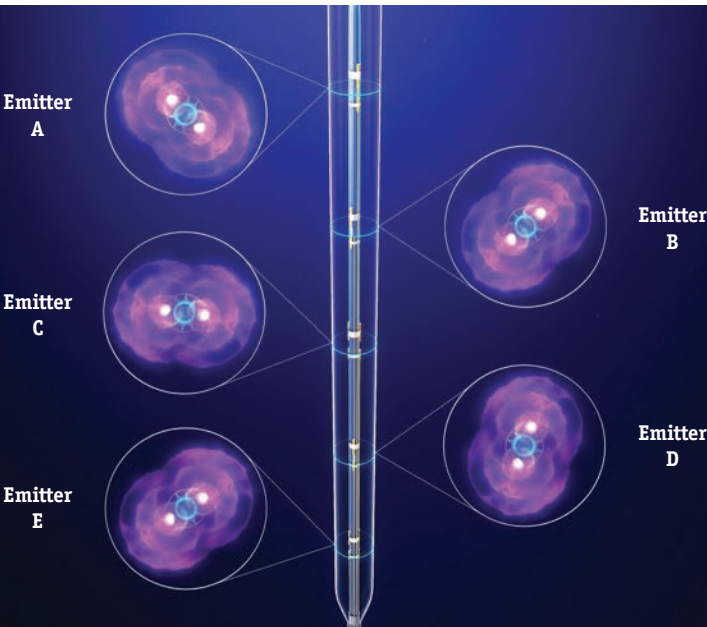


SEE THE FUTURE
OF IVL
IN ACTION

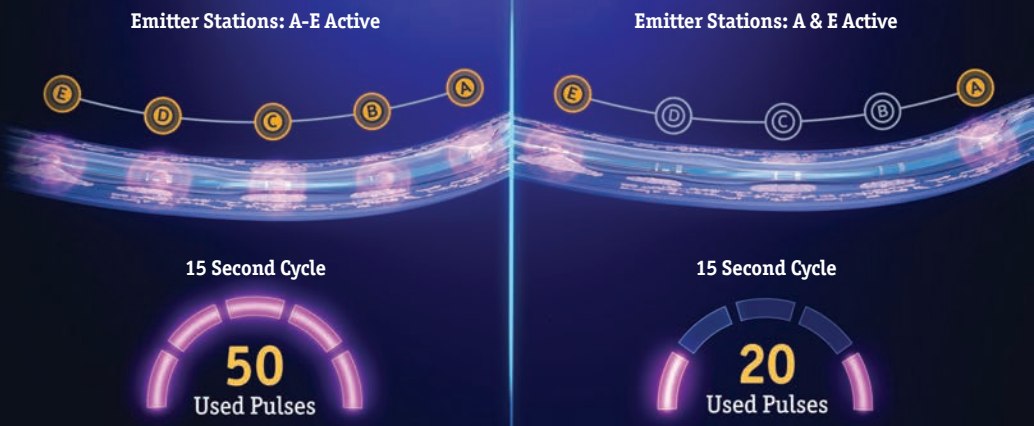
The most consistent
acoustic pressure
per pulse



Target eccentric and
nodular calcium with
360-degree coverage



Select your pulses



SEISMIQ INTRAVASCULAR LITHOTRIPSY CATHETER

DESCRIPTION	WORKING LENGTH	GUIDEWIRE (IN)	UPN	GTIN
3.5 mm x 60 mm	145 cm	0.014	FG-006912	008850056723008
4.0 mm x 60 mm	145 cm	0.014	FG-006913	008850056723015
5.0 mm x 60 mm	145 cm	0.014	FG-006915	008850056723039
6.0 mm x 60 mm	145 cm	0.014	FG-006917	008850056723053
7.0 mm x 60 mm	145 cm	0.014	FG-006919	008850056723077
8.0 mm x 60 mm	145 cm	0.014	FG-006921	008850056723091

All catheters are 6F sheath compatible.

SEISMIQ INTRAVASCULAR LITHOTRIPSY CONSOLE

DESCRIPTION	UPN	GTIN
CONSOLE, SEISMIQ IVL NORTH AMERICA	FG-010978	008850056723084



**SEISMIQ INTRAVASCULAR LITHOTRIPSY SYSTEM
INDICATIONS, SAFETY, AND WARNINGS**
<https://www.bostonscientific.com/seismiq-indications>

SEISMIQ is a registered or unregistered trademark of Boston Scientific Corporation or its affiliates.
All other trademarks are property of their respective owners.

Peripheral Interventions
300 Boston Scientific Way
Marlborough, MA 0175-1234
www.bostonscientific.com

For more information contact
customer service at 1.888.272.1001.

©2026 Boston Scientific Corporation or
its affiliates. All rights reserved.
PI-2396405-AA