



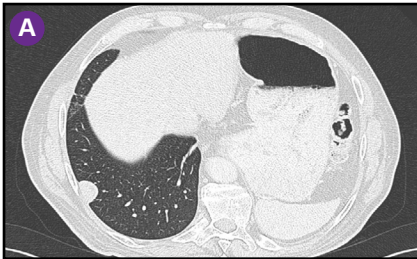
CASE STUDY: LUNG CYROABLATION

Cryoablation of 32 mm Soft Tissue Sarcoma Lung Metastasis Abutting the Pleura

Professor Thierry de Baere | Gustave Roussy Cancer Institute, Villejuif | France

PRESENTATION

- 63-year-old female
 - Previously diagnosed with two soft-tissue sarcoma lung metastases that were treated by thoracoscopic wedge resection
- Lung CT scan showed right lower lobe 32 mm metastasis abutting the pleura **A**



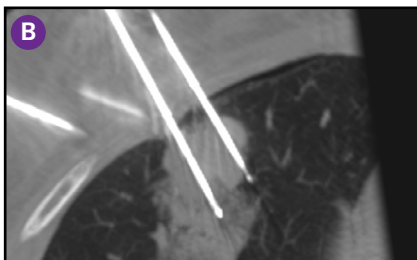
Presentation: CT scan showing 32 mm metastasis abutting the pleura

TREATMENT PLAN

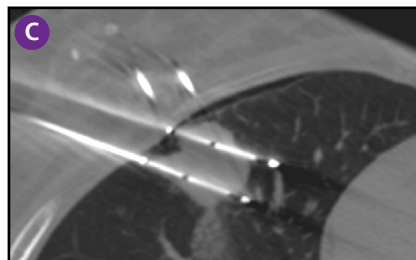
- Tumor board decided on thermal ablation
- Cryotherapy was selected due to the relatively large size of the tumor and the possible need for simultaneous overlapping ablations. In addition, the proximity of the pleura might have rendered radiofrequency or microwave therapies too painful

TREATMENT

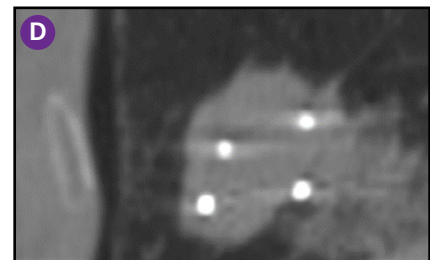
- Cryotherapy was performed under general anaesthesia with CT guidance
- Four IceRod™ 1.5 PLUS needles were inserted in parallel pairs at the level of the tumor **B C D**
- The geometry of probe positioning can be evaluated in a 2 cm slice thickness axial reconstruction **E** and volume imaging **F**
- Freeze and thaw cycles were completed per lung protocol



Cryoablation: CT scan showing one pair of the IceRod™ 1.5 PLUS needles



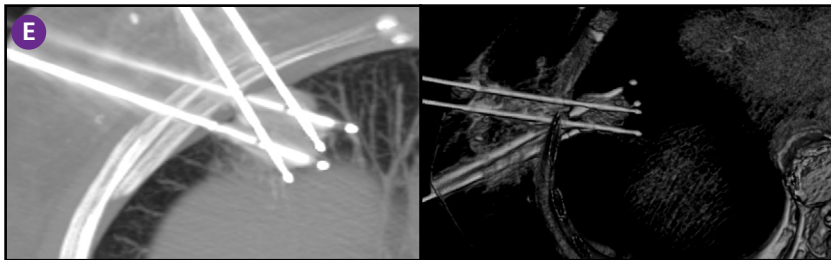
Cryoablation: CT scan showing the second pair of IceRod™ 1.5 PLUS needles



Cryoablation: Reconstruction perpendicular to the needles axis demonstrates the spacing between them

Cryoablation of 32 mm Soft Tissue Sarcoma Lung Metastasis Abutting the Pleura

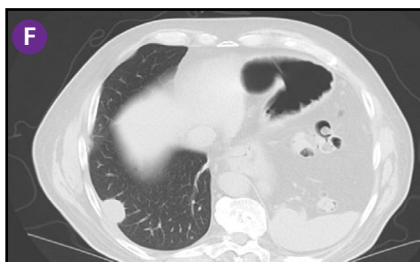
Professor Thierry de Baere | Gustave Roussy Cancer Institute, Villejuif | France



Cryoablation: Geometry of IceRod™ 1.5 PLUS needles visible on 2 cm slice thickness axial reconstruction (left) and volume imaging (right)

OUTCOME

- Follow-up CT scans were performed at one month, three months and six months. **F G H**
The scans showed a decrease in size of the ablation zone with excellent local disease control



Post cryoablation: One-month follow-up CT scan



Post cryoablation: Three-month follow-up CT scan



Post cryoablation: Six-month follow-up CT scan

CONCLUSION

- This case demonstrates how cryoablation zones can be simultaneously overlapped to control a tumor > 3 cm and the excellent tolerability of lung cryoablation close to the pleurae



Cryoablation Needles Indications, Safety, and Warnings

<https://www.bostonscientific.com/cryoneedles-indications>



ICEfx™ Cryoablation System Indications, Safety, and Warnings

<https://www.bostonscientific.com/icefx-indications>



Visual ICE™ Cryoablation System Indications, Safety, and Warnings

<https://www.bostonscientific.com/visualicecryo-indications>

**Boston
Scientific**
Advancing science for life™

Peripheral Interventions
300 Boston Scientific Way
Marlborough, MA 01752-1234
www.bostonscientific.com

To order product or for more information
contact customer service at 1.888.272.1001.

© 2025 Boston Scientific Corporation
or its affiliates. All rights reserved.

PI-1439203-AB