



# CASE STUDY: LUNG CYROABLATION

## Cryoablation of Small Pulmonary Metastasis

Professor Thierry de Baere | Gustave Roussy Cancer Institute | Villejuif, France

### PRESENTATION

- 67-year-old female
  - Previous treatment for renal cell carcinoma (RCC)
- First occurrence of lung metastasis – 1 cm lung metastasis in right upper lobe **A**
  - Tumor was PET positive



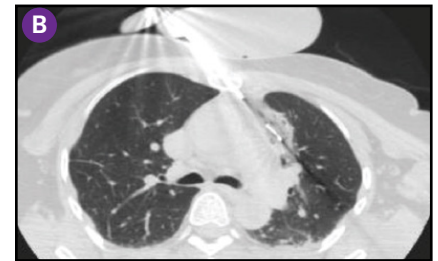
**Presentation:** CT (axial view) of right upper lobe shows 1 cm lung metastasis (arrow)

### TREATMENT PLAN

- Tumor board decided on thermal ablation

### TREATMENT

- A coaxial needle was used to achieve a trans-sternal access route parallelling the mediastinum
- A single IceSphere™ 1.5 needle was inserted into the target tumor under CT guidance
- Freeze and thaw cycles were completed per lung protocol (see below)
- The iceball was visible on CT as a 'ground glass' opacity covering the tumor with appropriate 'safety' margin beyond the tumor edge **B**

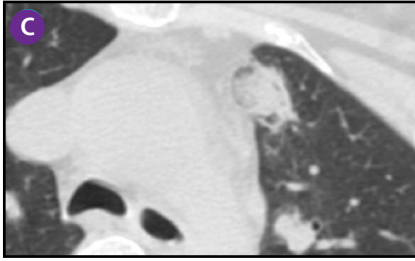


**Treatment:** CT obtained after completion of treatment shows a 'ground glass' opacity covering the tumor, including 'safety' margin area



# Cryoablation of Small Pulmonary Metastasis

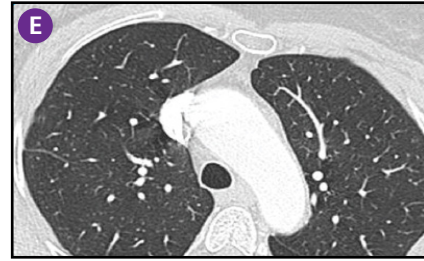
Professor Thierry de Baere | Gustave Roussy Cancer Institute, Villejuif | France



**Outcome:** CT one month post treatment shows cryoablation zone with 'safety' margins. This image was used as reference image for follow-up



**Outcome:** CT four months post treatment shows major involution of the cryoablation zone (arrow)



**Outcome:** On the CT obtained nine months after treatment, the cryoablation zone is barely visible

## OUTCOME

- Comparison of CT scans one and four months after treatment show major involution of the cryoablation zone **C D**
- Nine months after treatment the cryoablation zone is barely visible on CT scan **E**

## CONCLUSION

- This case highlights the rapid scarring process of the ablation zone typically seen after cryoablation, rendering follow-up imaging easier than with other ablation techniques that demonstrate a slower resolution of the ablated tissue



### Cryoablation Needles Indications, Safety, and Warnings

<https://www.bostonscientific.com/cryoneedles-indications>



### ICEfx™ Cryoablation System Indications, Safety, and Warnings

<https://www.bostonscientific.com/icefx-indications>



### Visual ICE™ Cryoablation System Indications, Safety, and Warnings

<https://www.bostonscientific.com/visualicecryo-indications>

**Boston  
Scientific**  
Advancing science for life™

**Peripheral Interventions**  
300 Boston Scientific Way  
Marlborough, MA 01752-1234  
[www.bostonscientific.com](http://www.bostonscientific.com)

To order product or for more information  
contact customer service at 1.888.272.1001.

© 2025 Boston Scientific Corporation  
or its affiliates. All rights reserved.

PI-1439802-AB