



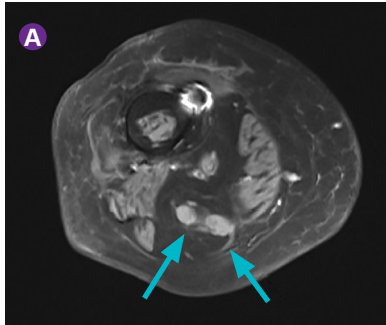
# CASE STUDY: PALLIATIVE PAIN MANAGEMENT

## Sciatic and Femoral Nerve Cryoablation

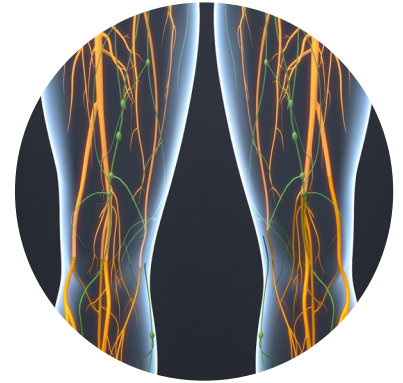
Robert Evans Heithaus, MD | Vascular and Interventional Radiologist University of Florida | Gainesville, FL

### PRESENTATION OF PATIENT

- 83-year-old male
- Right lower extremity pain 20+ years after amputation

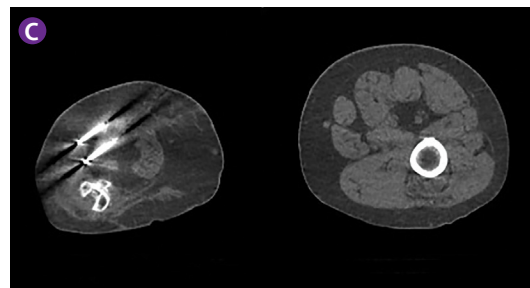
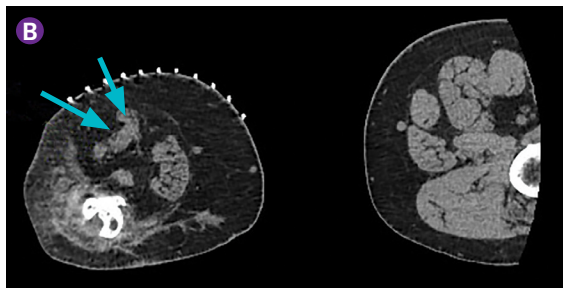


- Patient experienced residual limb pain (7-8/10 VAS) along the stump of his leg above the knee amputation. On MRI he had two neuromas that developed along the course of the distal sciatic nerve **A**
- Patient experienced daily pain both at rest and with movement, with difficulty transferring to and from his wheelchair due to pain. Patient treated with oral medications (gabapentin, tramadol, oxycodone)
- Referred by local VA pain management clinic for evaluation and treatment of the stump neuroma



### TREATMENT 1

- Two IceRod™ 1.5 CX Cryoablation Needles were used to bracket the neuromas. CT provided good visualization of the neuromas. **B** An initial freeze-thaw-freeze-thaw cycle was used with passive thawing **C**



### POST PROCEDURE

- The patient experienced minimal pain relief initially. Within 1-2 days the patient had worsening of the pain to 10/10 with no relief by medications. Pain was in both a femoral and sciatic nerve distribution
- The patient was seen in follow up clinic. Due to his residual limb pain, a sciatic and femoral nerve cyroneurolysis was planned with test nerve blocks to be performed first to attempt to predict the effectiveness of cryoneurolysis of the sciatic and femoral nerves

### TREATMENT 2

- Nerve blocks of the femoral and sciatic nerves were performed with lidocaine 2% without epinephrine and bupivacaine 0.25% (approximately 4 cc / 6 cc ratio, full volume instilled at each nerve). This resulted in immediate pain relief

### POST PROCEDURE

- Patient was seen in one week and reported having complete symptom relief for 3-4 days, but then 10/10 pain returned. Counseled to return for cryoablation

# PALLIATIVE PAIN MANAGEMENT | Sciatic and Femoral Nerve Cryoablation

Robert Evans Heithaus, MD | Vascular and Interventional Radiologist University of Florida | Gainesville, FL

## TREATMENT 3

- One IceSphere™ 1.5 CX Cryoablation Needle was placed for the sciatic nerve and did not result in good pain relief after the freeze-thaw cycle was performed. The needle was repositioned more posteriorly, and a repeat freeze-thaw cycle was performed, which resulted in immediate relief **D**
- The key to this technique is giving patients deep sedation with propofol because freezing the nerve is extremely painful for some patients despite pre-freeze lidocaine injection. By using propofol, waking the patient up to evaluate immediate pain relief is possible
- In this case, the patient required another round of deep sedation to reposition the needle and do another freeze-thaw cycle. Upon reawakening, the patient had immediate and complete pain relief in the sciatic distribution of his pain
- Next, cryoneurolysis with one IceSphere™ 1.5 CX Cryoablation Needle was performed with the same freeze-thaw cycle. The patient reported immediate 0/10 pain relief and was discharged one hour later **E**



## POST PROCEDURE

- Patient was seen one week later. He had some mild residual pain (3/10); however, his quality of life was markedly improved. He felt this treatment was adequate to move on without further treatment and live his life comfortably. He was not on any pain medications at the time of follow-up
- The patient received counseling that his nerves will regenerate over time and if he experiences recurrent pain, he should return to the IR clinic for evaluation and possible repeat ablation

## CONCLUSION

- Cryoneurolysis can be a solution for recurrent limb pain



### Cryoablation Needles Indications, Safety, and Warnings

<https://www.bostonscientific.com/cryoneedles-indications>



### ICEfx™ Cryoablation System Indications, Safety, and Warnings

<https://www.bostonscientific.com/icefx-indications>



### Visual ICE™ Cryoablation System Indications, Safety, and Warnings

<https://www.bostonscientific.com/visualicecryo-indications>

**Boston  
Scientific**  
Advancing science for life™

**Peripheral Interventions**  
300 Boston Scientific Way  
Marlborough, MA 01752-1234  
[www.bostonscientific.com](http://www.bostonscientific.com)

To order product or for more information  
contact customer service at 1.888.272.1001.

© 2025 Boston Scientific Corporation  
or its affiliates. All rights reserved.

PI-1320203-AB