



CRYOABLATION Lung Metastases | ECLIPSE STUDY

Evaluating Cryoablation of Metastatic Lung Tumors in Patients - Safety and Efficacy. The ECLIPSE Trial—Interim Analysis at 1 Year

Thierry de Baère, MD • Lambros Tselikas, MD • David Woodrum, MD, Ph.D • Fereidoun Abtin, MD • Peter Littrup, MD • Frederic Deschamps, MD • Robert Suh, MD • Hussein D. Aoun, MD • Matthew Callstrom, MD, Ph.D
Journal of Thoracic Oncology • October 2015

The ECLIPSE Study: Efficacy of Cryoablation on Metastatic Lung Tumors with a 5-Year Follow-up

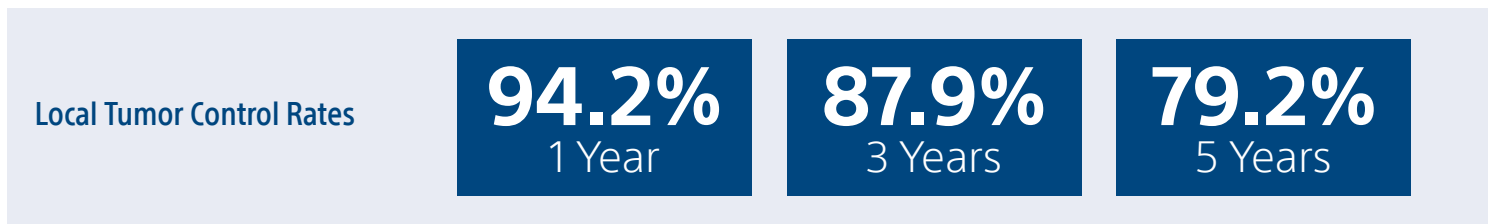
Thierry de Baère, MD • David Woodrum, MD, Ph.D • Lambros Tselikas, MD • Fereidoun Abtin, MD • Peter Littrup, MD • Frederic Deschamps, MD • Robert Suh, MD • Hussein D. Aoun, MD • Matthew Callstrom, MD, Ph.D
Journal of Thoracic Oncology • August 2021

Combined look at the ECLIPSE multicenter, prospective, single arm study over 5 years.

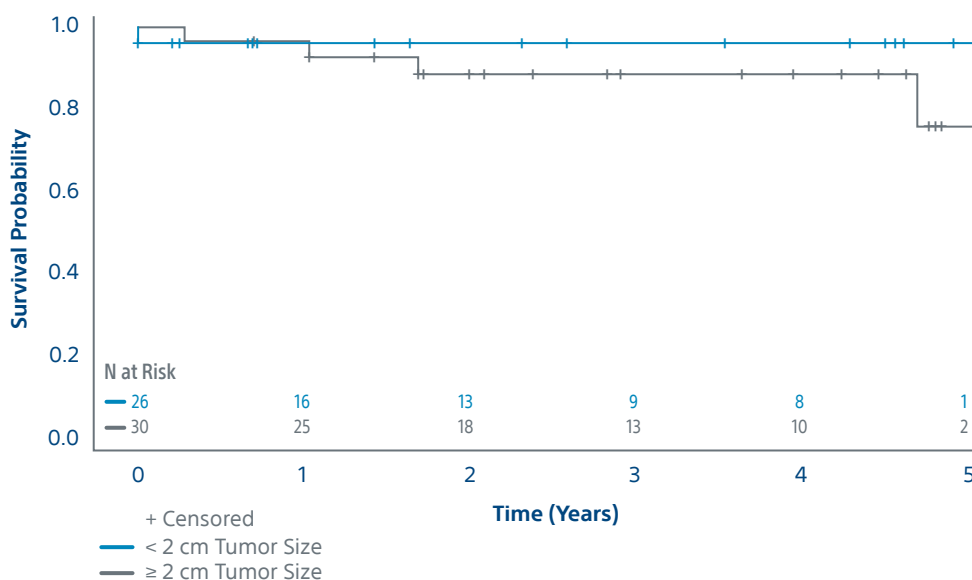
STUDY OBJECTIVE

- Primary objective was to assess 5-year local control of CA in lung tumors of 3.5 cm or less in patients with pulmonary metastatic disease
- Secondary objectives to evaluate cancer-specific and overall survival, as well as, evaluate changes in quality of life (QoL) over a five-year period

KEY RESULTS



Local Control by Lesion Size



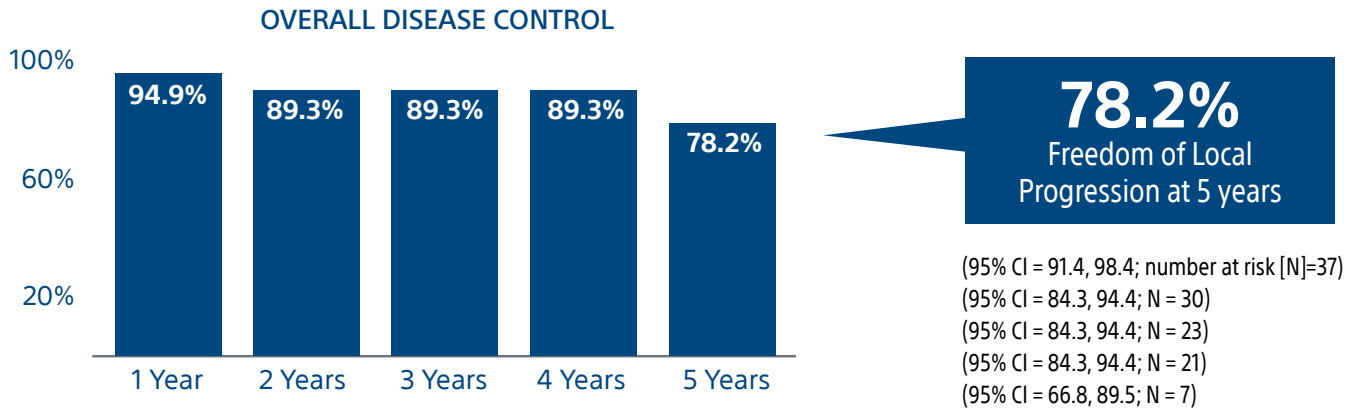
5-Year Local Control
88.9% Lesions < 2 cm
73.3% Lesions ≥ 2 cm

Local tumor control based on change from Month 3 of treated tumors (N = 56) by tumor size*

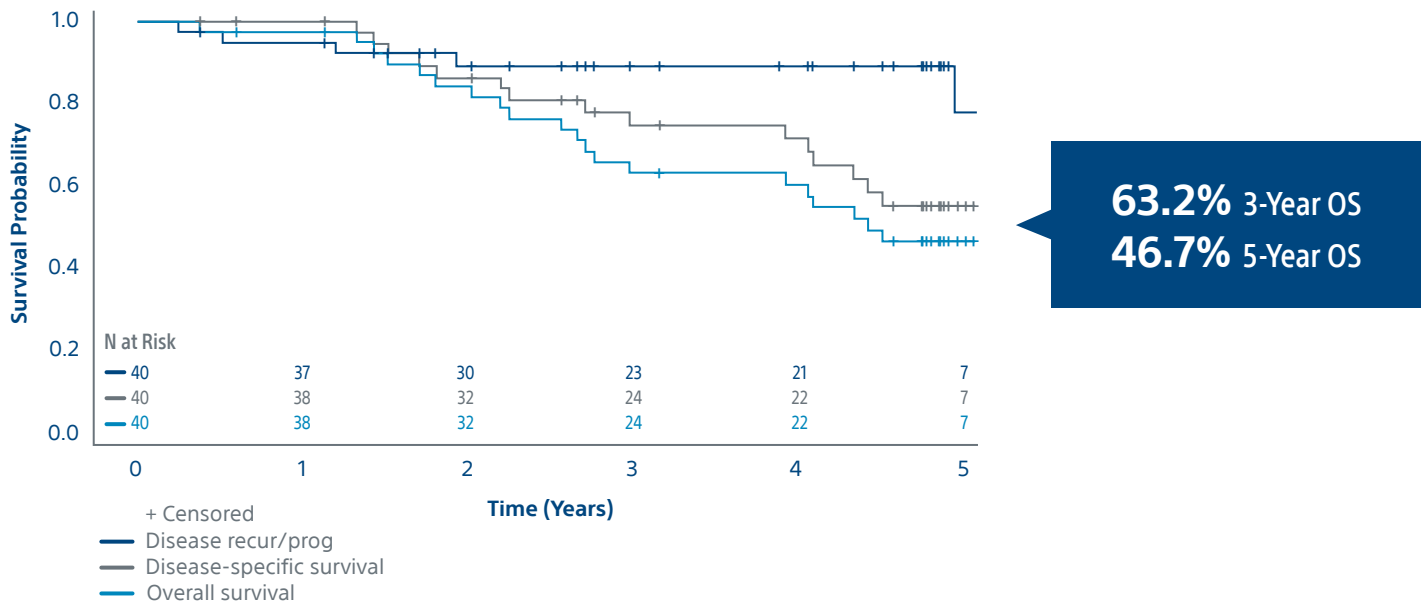
*Note: Four tumors were not included in analyses as 3-month imaging was not available at that time point.

Freedom from Local Progression

Patients free from local progression without additional locoregional treatment at the index lesion.



Survival Curves



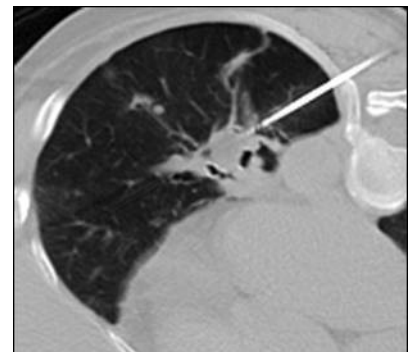
Disease Specific Survival

74.8%
3 Years

55.3%
5 Years

DEMOGRAPHICS

- Patients with 60 lung metastases were treated during 48 cryoablation procedures
- Inclusion Criteria: 1 to 5 metastases from extrapulmonary cancers, with a max diameter of 3.5 cm
- Patients were 62.6 ± 13.3 years old (26–83)
- The most common primary cancers were colon (40%), kidney (23%), and sarcomas (8%)



TREATMENT

- Cryoablation was performed under general anesthesia (67%) or conscious sedation (33%)
- Mean size of metastases was 1.4 ± 0.7 cm (0.3–3.4), and metastases were bilateral in 20% of patients
- Technical success for each treated tumor was defined as a zone of ground glass opacity, or visible ice encompassing the targeted tumor with at least a 5 mm circumferential ablative margin on CT at end of the cryoablation
- Cryoablation was performed applying a three-cycle freeze–thaw phase protocol
 - The times for each phase were recorded and varied as a function of the size of the tumor: targeted protocol–

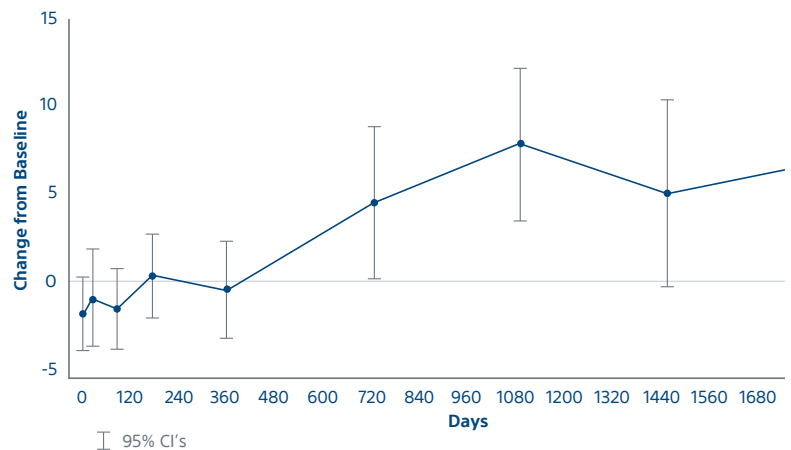


ADVERSE EVENTS

- One patient withdrew from study for treatment failure
- Three patients experienced pneumothorax (two Grade 2 and one Grade 3)
 - Grade 2 - prolonged hospitalization
 - Grade 3 - required hospitalization with chest tube insertion and vascular access complication and underwent thrombectomy, did well, and was subsequently discharged

QUALITY OF LIFE

QoL, as measured by Karnofsky Performance Score (KPS) improved over time, without statistical significance. While improvements were not considered statistically or clinically significant during early follow-up visits, some became clinically meaningful over time.



ECLIPSE STUDY CONCLUSION

Cryoablation is an effective means of local tumor control in patients with metastatic lung disease, with the majority of surviving patients maintaining local tumor control at the index tumor site over 5 years. Furthermore, cancer-specific survival and overall survival were greater after 5 years than for many other local treatment modalities, including surgical resection.



**Cryoablation Needles
Indications, Safety, and Warnings**

<https://www.bostonscientific.com/cryoneedles-indications>



**ICEfx™ Cryoablation System
Indications, Safety, and Warnings**

<https://www.bostonscientific.com/icefx-indications>



**Visual ICE™ Cryoablation System
Indications, Safety, and Warnings**

<https://www.bostonscientific.com/visualicecryo-indications>

**Boston
Scientific**
Advancing science for life™

Peripheral Interventions
300 Boston Scientific Way
Marlborough, MA 01752-1234
www.bostonscientific.com

*To order product or for more information
contact customer service at 1.888.272.1001.*

© 2025 Boston Scientific Corporation
or its affiliates. All rights reserved.

PI-1123106-AB