



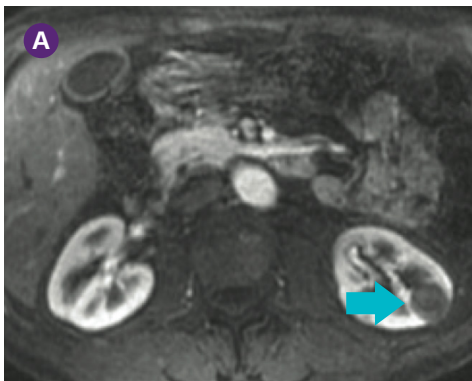
CASE STUDY: RENAL CRYOABLATION

Adjacent Structures and RCC

Shamar Young, MD | University of Minnesota | Minneapolis, MN

PRESENTATION

- 66-year-old male
- 2.0 cm x 2.1 cm left sided, endophytic RCC
 - Biopsy confirmed clear cell renal cell carcinoma **A**



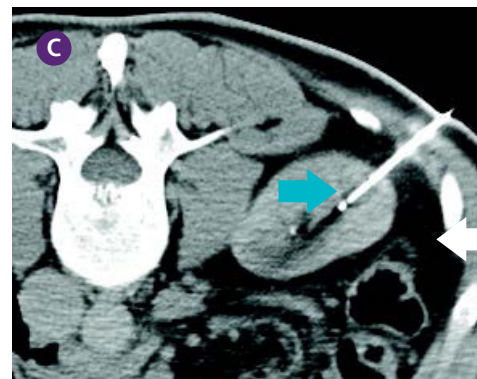
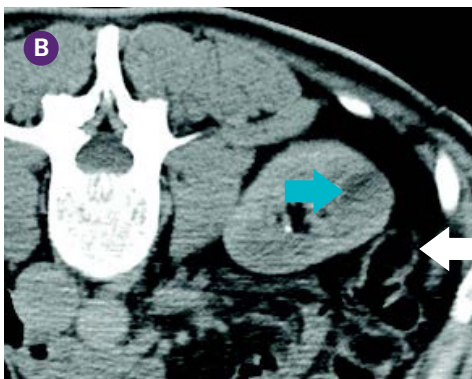
Contrast enhanced MRI demonstrates a 2.0 cm x 2.1 cm left sided endophytic RCC

TREATMENT

- Cryoablation was performed using three IceRod™ 1.5 CX needles for treatment
- A yueh needle was utilized to introduce normal saline to hydrodissect away the adjacent colon



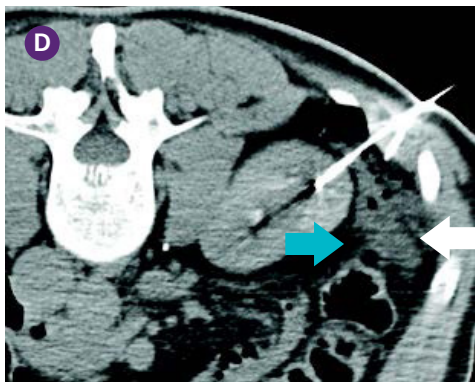
- Initial CT images on the day of the procedure demonstrates the lesion (blue arrow) and adjacent colon (white arrow) which would likely be injured if not moved **B C**



IceRod™ 1.5 CX needle entering the RCC (blue arrow). The adjacent colon remains too close to the anticipated ablation zone (white arrow)

Cryoablation: Adjacent Structures and RCC

Shamar Young, MD | University of Minnesota | Minneapolis, MN



After accessing the space adjacent to the colon, normal saline was infused to push the colon away (blue arrow)



After hydrodissection cryoablation was successfully performed

OUTCOME

- The patient had no pain or significant complaints; he was discharged the same day of the procedure and returned to work the next day
- He continues to be without evidence of residual/recurrent disease one-year later **F**



One-year follow up CT demonstrates no evidence of residual or recurrent disease. A non-enhancing, expected, ablation zone (blue arrow) is noted

CONCLUSION

- At times endophytic lesions or adjacent structures are cited as reasons for not offering cryoablation. However, adjacent structures are commonly movable utilizing various techniques and endophytic lesions are almost always visible with CT or US guidance. These scenarios should not preclude patients from being offered cryoablation

CT: Computed Tomography



Cryoablation Needles Indications, Safety, and Warnings

<https://www.bostonscientific.com/cryoneedles-indications>



ICEfx™ Cryoablation System Indications, Safety, and Warnings

<https://www.bostonscientific.com/icefx-indications>



Visual ICE™ Cryoablation System Indications, Safety, and Warnings

<https://www.bostonscientific.com/visualicecryo-indications>

**Boston
Scientific**
Advancing science for life™

**Interventional Oncology
and Embolization**
300 Boston Scientific Way
Marlborough, MA 01752-1234
www.bostonscientific.com

To order product or for more information
contact customer service at 1.888.272.1001.

© 2026 Boston Scientific Corporation
or its affiliates. All rights reserved.

PI-998306-AB