

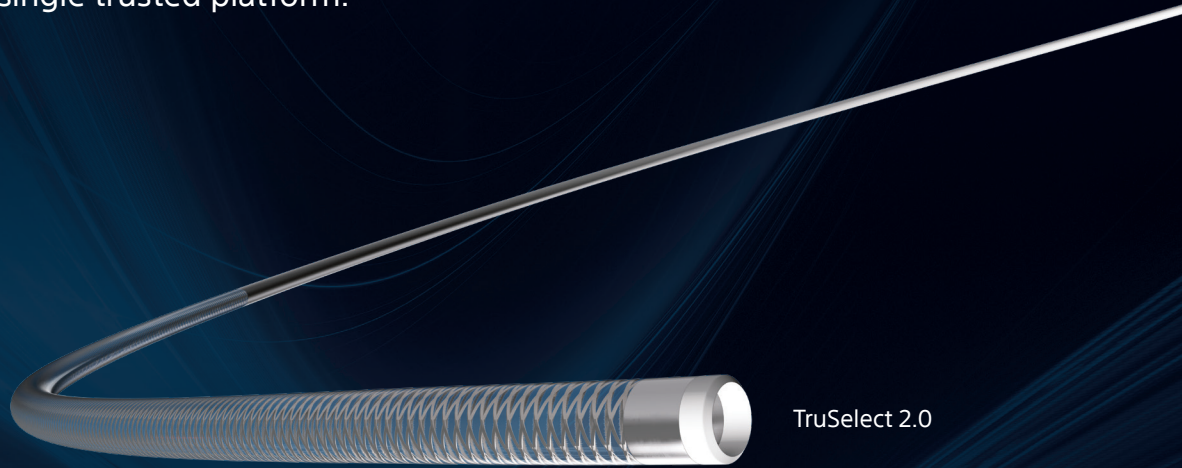


TRUSELECT™
Microcatheters

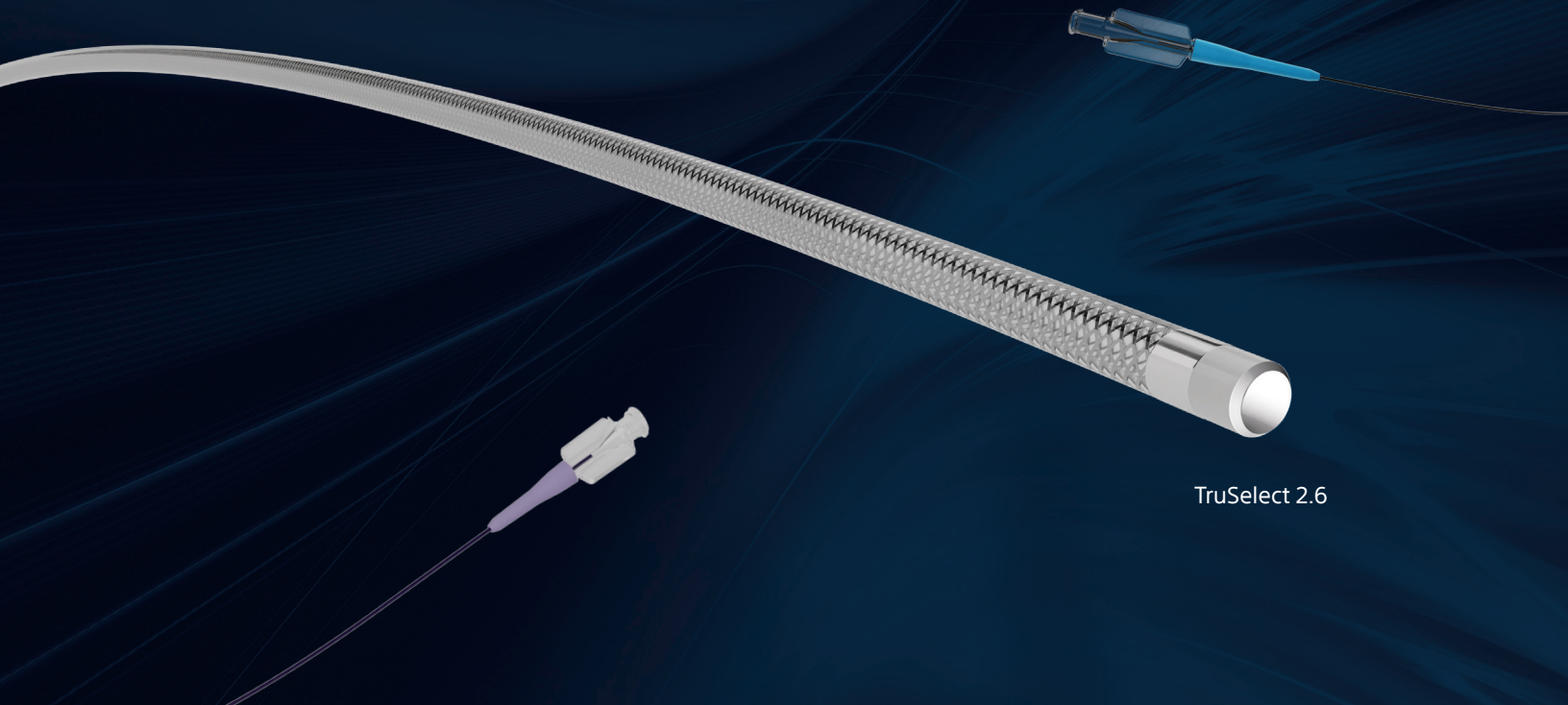
Performance you trust.

Now in every procedure.

From selective to go-to solutions,
built on a single trusted platform.



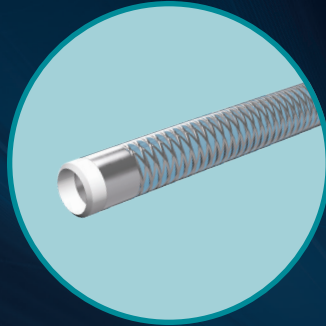
TruSelect 2.0



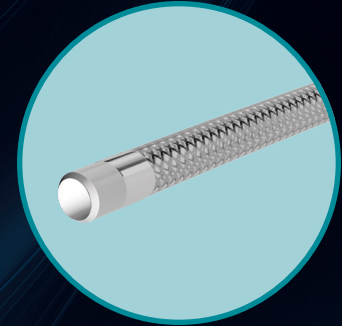
TruSelect 2.6

The TruSelect™ Microcatheter family offers a complete solution, from selective to first-pull, built on a trusted platform. TruSelect 2.0 was designed for selective access, while TruSelect 2.6 iterates on a proven design to provide procedural efficiency when trackability and flow are needed. Each microcatheter is designed to deliver premium performance where it matters most — every case.

TruSelect 2.0
Selective access



TruSelect 2.6
Go-to solution



- Precise, controlled navigation for selective embolization
- Supports distal access in small or tortuous anatomy
- Engineered to maintain flow and embolic compatibility without sacrificing precision

- Eliminates traditional trade-offs by bringing track, torque, and flow together in a single catheter
- Unique hand-shapeable tip can be shaped without heat or steam and retains its shape within the body
- Extends the trusted TruSelect design into a workhorse platform

Specifications	TruSelect 2.0	TruSelect 2.6
Distal Tip OD	2.0 F	2.6 F
Distal Lumen ID	0.021"	0.025"
Max Guidewire	0.016"	0.021"
Microsphere Compatibility	≤ 700 μm	≤ 900 μm
PVA Particles	< 500 μm	< 710 μm
Embolic Coil Compatibility	0.018" (all coils and most lengths)*	Coils requiring 0.025" ID
Length (cm)	105, 130, 155, 175	105, 130, 155
Tips Shapes	Straight, Bern (80°)	Straight, Bern (80°)
Max PSI and Flow Rate**	800 psi, 3.0 mL/s	900 psi, 4.0 mL/s
DMSO Compatible	Yes	Yes

*Coil compatible with 105 cm, 130 cm, and 155 cm microcatheter only.

**Flow rates mentioned are for 105 cm length using 100% non-ionic contrast 300 at max PSI.



TruSelect™ Microcatheter
Indications, Safety, and Warnings

<https://www.bostonscientific.com/us/en/truselect-indications>



TruSelect™ 2.6 Microcatheter
Indications, Safety, and Warnings

<https://www.bostonscientific.com/truselect-2-6-indications>



Advancing science for life™

**Interventional Oncology
and Embolization**
300 Boston Scientific Way
Marlborough, MA 01752-1234
www.bostonscientific.com

To order product or for more information
contact customer service at 1.888.272.1001.

© 2026 Boston Scientific Corporation or its
affiliates. All rights reserved.

PI-2448301-AA