



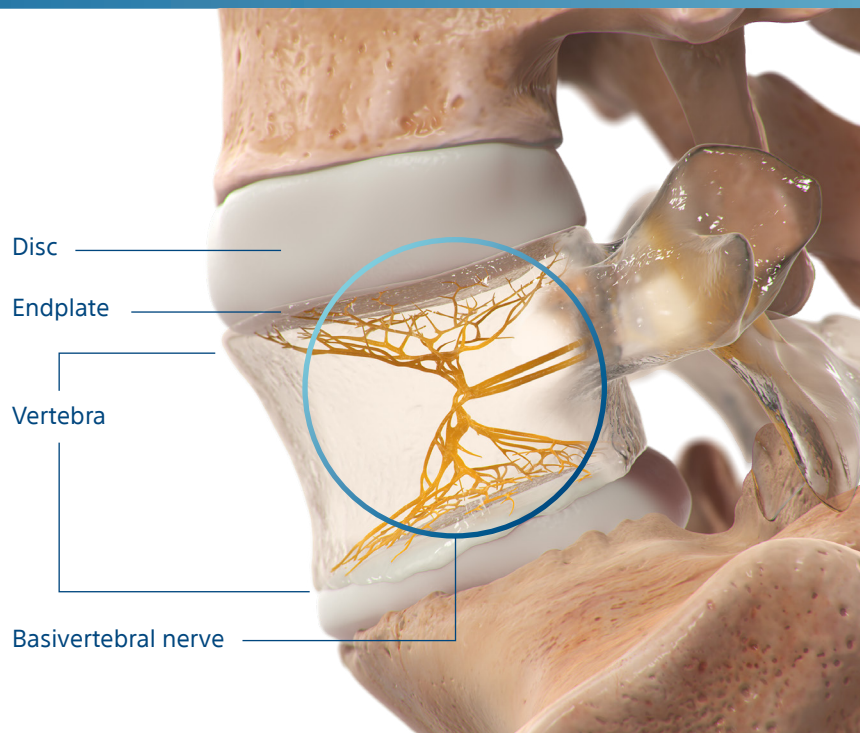
Proven relief of vertebrogenic chronic low back pain



Vertebrogenic pain is understood

It is a specific type of chronic low back pain caused by damage to vertebral endplates.

Disc degeneration produces stresses on the endplates leading to inflammation and vertebrogenic pain.



How people describe vertebrogenic pain

Vertebrogenic pain is often described as pain in the middle of the low back that is often made worse by certain activities. To confirm that a patient has vertebrogenic pain, physicians use MRI to look for specific changes that occur with endplate inflammation, which are called Modic changes.



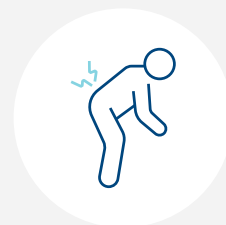
Sitting



Lifting



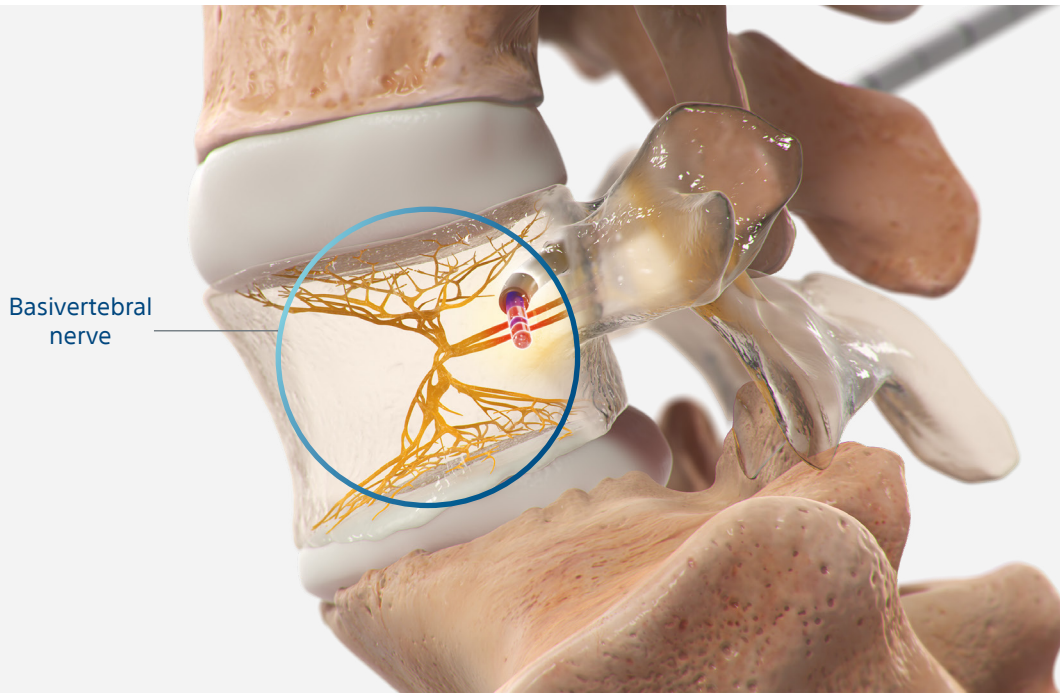
Activity



Bending

Targeting the basivertebral nerve is the key

The basivertebral nerve (BVN) enters through an opening in the back of the vertebral body and transmits pain signals to the brain. The Intracept Procedure is a minimally invasive treatment that involves heating the BVN with radiofrequency to stop it from sending these pain signals.



Scan to
learn more



Minimally invasive,
implant free



Long-term pain relief¹



Same day procedure,
brief recovery



Proven Safety Profile*

1. Fischgrund J, Rhyne A, Macadaeg K, et al. Long-term outcomes following intraosseous basivertebral nerve ablation for the treatment of chronic low back pain: 5-year treatment arm results from a prospective randomized double-blind sham-controlled multi-center study. *Eur Spine J.* 2020;29(8):1925-34. <http://doi.org/10.1007/s00586-020-06448-x>

*Data on file

Indications for Use: The Intracept™ Intraosseous Nerve Ablation System is indicated for patients who have had chronic low back pain for at least six months, who have tried conservative care for at least six months, and whose MRI shows features consistent with Modic changes – indicating damage at the vertebral endplates has led to inflammation. Not every patient who meets these criteria is a candidate for the Intracept Procedure, however – in fact, there are specific characteristics indicating a patient should not be considered for the procedure.

Contraindications include being pregnant, having weakened cardiac or pulmonary function, having an active implanted electronic medical device in the body (such as a pacemaker or defibrillator), being diagnosed with a systemic or local infection, or having an anatomy that could be damaged unintentionally while ablating the basivertebral nerve (based on your physicians' clinical review). The Intracept Procedure is also contraindicated in patients who are skeletally immature – which generally means individuals under the age of 18 are not candidates. There are also certain risks and precautions regarding the procedure which you should be aware of before proceeding. Talk with your doctor about what indicates, and contraindicates, certain patients for the Intracept Procedure – as well as the risks and precautions for the procedure. For complete indications for use, contraindications, warnings, precautions, and side effects visit www.relievant.com/intracept/.

Caution: U.S. Federal law restricts this device to sale by or on the order of a physician.

Copyright © 2025 by Boston Scientific Corporation or its affiliates. All rights reserved.

NM-2039709-AA

INTRACEPT™
Vertebrogenic Pain Relief

**Boston
Scientific**

Advancing science for life™