



ARE YOU LOOKING FOR AN OPTION THAT PROVIDES  
EFFECTIVE, LASTING RELIEF FOR DIABETIC NERVE PAIN?



Learn how Spinal Cord Stimulation (SCS) can help.

## WHEN SHOULD A PATIENT WITH DIABETIC NERVE PAIN CONSIDER SCS?

For your patients that suffer from painful diabetic peripheral neuropathy (DPN) of the lower extremities, spinal cord stimulation (SCS) is an option if:



They have been treated for diabetic nerve pain for over six months.



Other treatments such as prescription medications and topical creams have not provided successful pain relief.



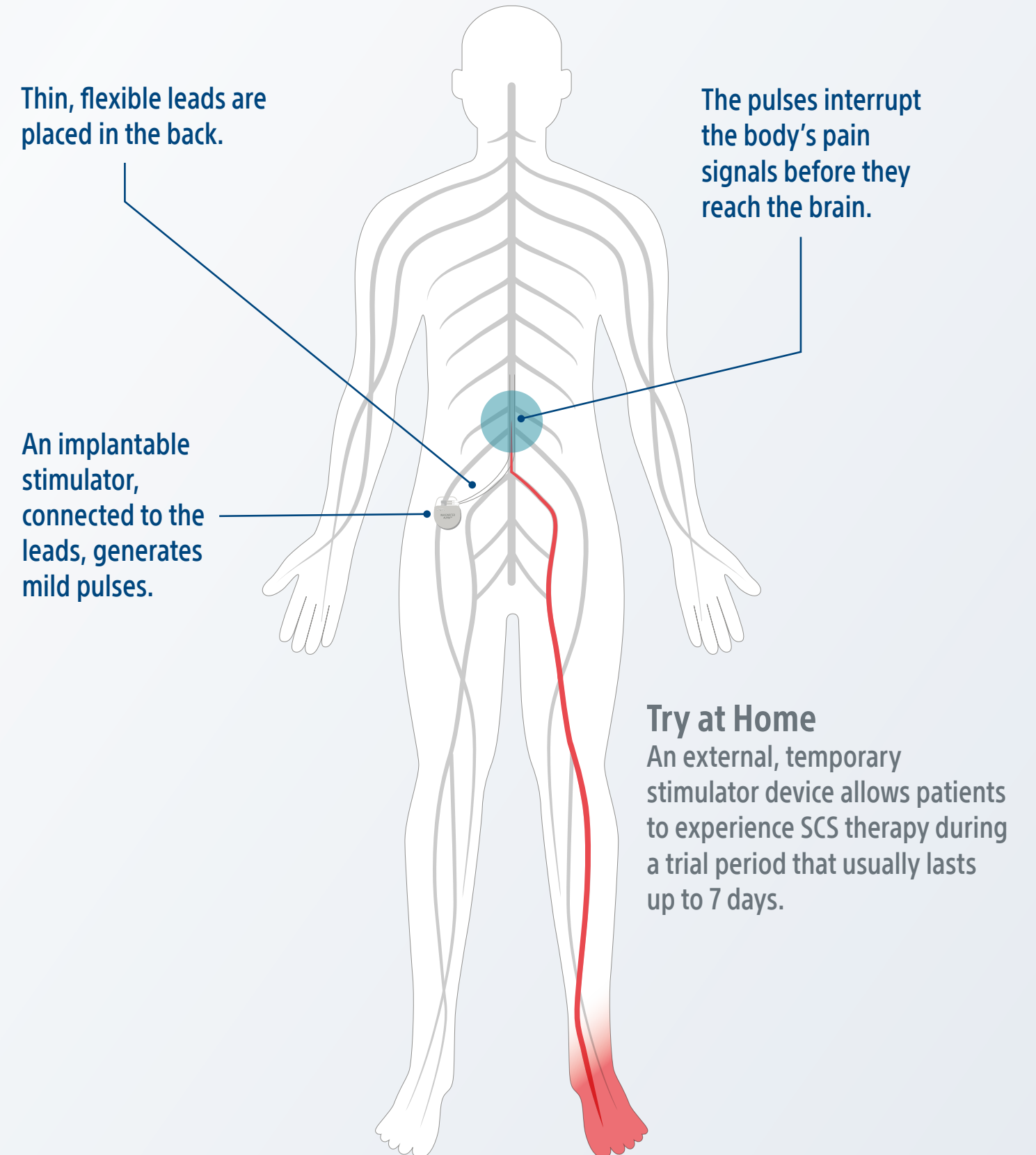
The American Diabetes Association (ADA) recommends referring DPN patients to specialized pain clinics when prescription medications have no meaningful effect on pain.<sup>1,2</sup>

## FACTS ABOUT BOSTON SCIENTIFIC SCS

- ✓ Reversible, non-drug therapy
- ✓ Full body MRI conditional
- ✓ May result in a reduction of oral drugs and their side effects
- ✓ Covered by most insurance providers, including Medicare, commercial plans, and most worker's compensation programs
- ✓ Usually prescribed by an Interventional Pain Physician

## HOW SPINAL CORD STIMULATION (SCS) WORKS

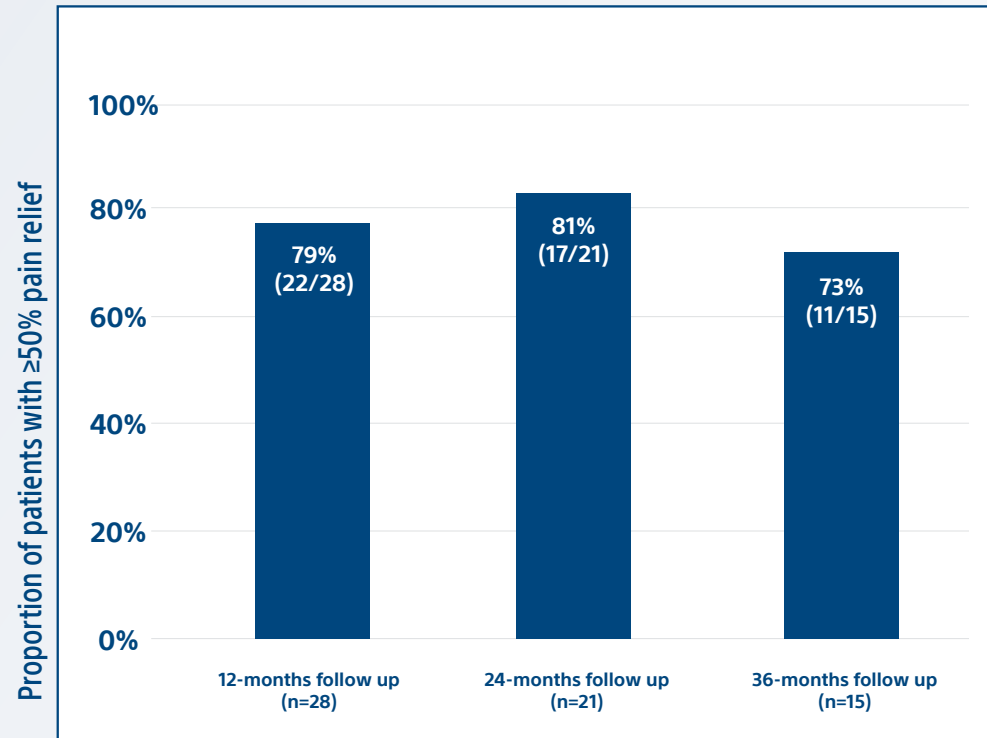
SCS uses an implanted device to deliver mild electrical impulses that interrupt pain signals. Patients undergo a fully reversible trial procedure first to test SCS on their particular pain.



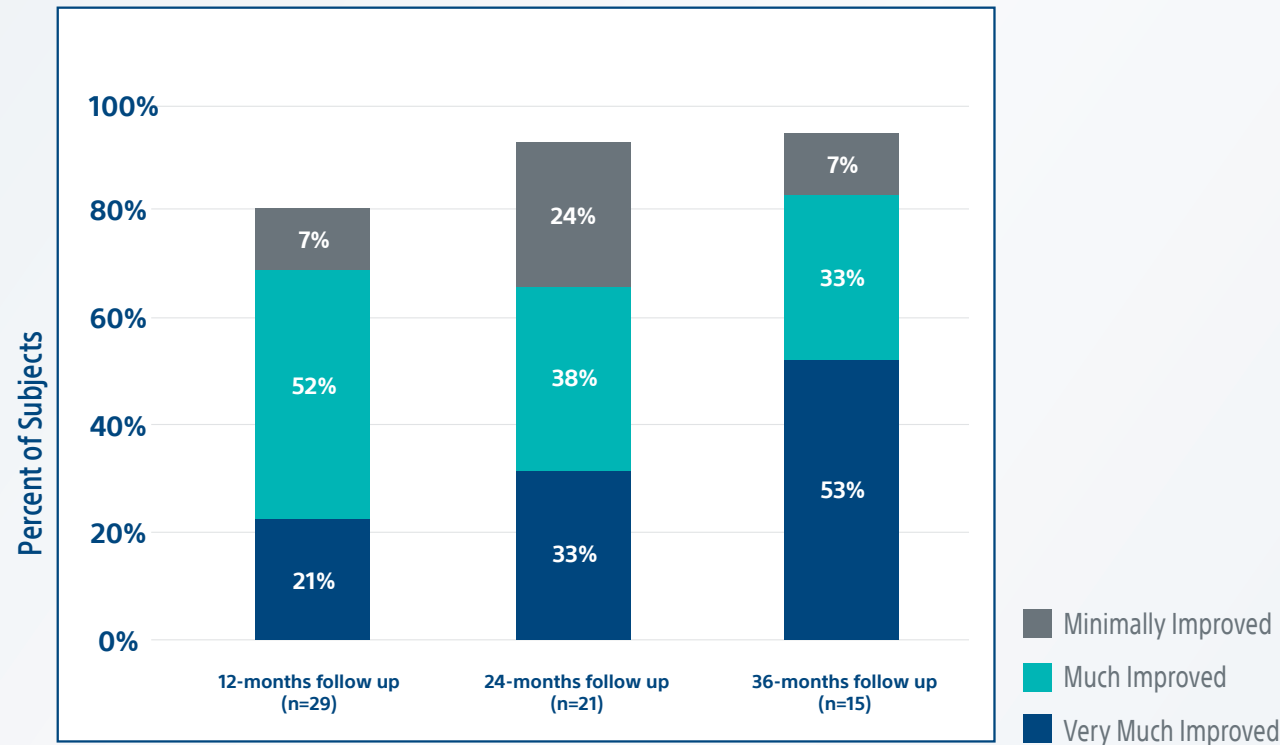
# BOSTON SCIENTIFIC'S RELIEF REGISTRY: 3-YEAR DATA

Real-world data from a sub-cohort of DPN-diagnosed SCS patients participating in the global, prospective RELIEF registry demonstrated<sup>3</sup>:

TREATMENT RESPONDER RATES AT LONG TERM FOLLOW-UP:



PATIENT GLOBAL IMPRESSION OF CHANGE (PGIC)



## CONCLUSIONS FROM RELIEF REGISTRY<sup>3</sup>:



Responder rate of 81% at 2-years



Improvement in EQ-5D index (Quality of Life) of 3x minimally important difference (MID)<sup>4</sup>



Consistent high level of satisfaction (up to 95% of patients reported improvement)



Low rate of procedural infection of 4.7% (2/43)

*This data supports the safety and efficacy of SCS in patients with painful diabetic peripheral neuropathy.*

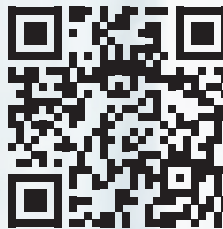




## GUIDING YOUR PATIENTS TO LASTING RELIEF

Our Boston Scientific Representatives will provide the support and connections you need to help your patients find the right solution for their pain.

Connect with your Boston Scientific Representative for more information.



Learn more about Boston Scientific programs and resources for you and your patients at [BostonScientific.com/Liaison](https://BostonScientific.com/Liaison)

### TODAY

### ON-GOING PARTNERSHIP





## COMMON INDICATIONS FOR SCS

SCS is an effective treatment option for a range of chronic pain conditions, including:

- Chronic, intractable pain of the trunk and/or limbs
- Radicular Pain Syndrome
- Failed Back Surgery Syndrome (FBSS)
- Non-Surgical Back Pain
- Complex Regional Pain Syndrome (CRPS/RSD) Types I & II
- Chronic pain associated with Diabetic Peripheral Neuropathy (DPN) of the lower extremities

***BUSINESS CARD***

Connect with your Boston Scientific Representative for more information.

1. Pop-Busui R, Ang L, Boulton A, et al. Diagnosis and treatment of painful diabetic peripheral neuropathy. *Compendia*. 2022;2022(1):1-32.  
 2. Pop-Busui R, Boulton AJM, Feldman EL, et al. Diabetic neuropathy: A position statement by the American Diabetes Association. *Diabetes Care*. 2017;40(1):136-154.  
 3. Berg A, et al. Global, Multicenter Registry of Prospectively-Enrolled Patients Utilizing SCS for Painful-Diabetic Peripheral Neuropathy (DPN): Long-Term Outcomes [Abstract 854-P]. Presented at the Eighty-fourth Scientific Sessions of the American Diabetes Association, June 21-24, 2024, Orlando, FL USA  
 4. McClure NS, et al. Minimally Important Difference of the EQ-5D-5L Index Score in Adults with Type 2 Diabetes. *Value Health*. 2018 Sep21(9): 1090-1097  
 The Boston Scientific Spinal Cord Stimulator Systems are indicated as an aid in the management of chronic intractable pain of the trunk and/or limbs including unilateral or bilateral pain associated with the following: failed back surgery syndrome, Complex Regional Pain Syndrome (CRPS) Types I and II, Diabetic Peripheral Neuropathy of the lower extremities, intractable low back pain and leg pain, radicular pain syndrome, radiculopathies resulting in pain secondary to failed back syndrome or herniated disc, epidural fibrosis, degenerative disc disease (herniated disc pain refractory to conservative and surgical interventions), arachnoiditis, multiple back surgeries. The Boston Scientific Spectra WaveWriter™, WaveWriter Alpha™ and WaveWriter Alpha™ Prime SCS Systems are also indicated as an aid in the management of chronic intractable unilateral or bilateral low back and leg pain without prior back surgery. Contraindications, warnings, precautions, side effects. The SCS Systems are contraindicated for patients who: are unable to operate the SCS System, have failed trial stimulation by failing to receive effective pain relief, are poor surgical candidates, or are pregnant.  
**Warning:** Stimulation modes. Only paresthesia-based stimulation mode has been evaluated for effectiveness in the diabetic peripheral neuropathy (DPN) population. The physician locator tool identifies pain management specialists in your area who have met certain qualifying criteria and are experienced with one or more of Boston Scientific pain management therapies. All treatment options should be discussed thoroughly with a pain management specialist.  
**Caution:** U.S. Federal law restricts this device to sale by or on the order of a physician.  
 All trademarks are the property of their respective owners.

**Boston  
Scientific**  
Advancing science for life™

25155 Rye Canyon Loop  
Valencia, CA 91355 USA

Copyright ©2024 by  
Boston Scientific Corporation  
or its affiliates. All rights reserved.

NM-1879104-AA