

LithoVue™ Elite

Single-Use Digital Flexible Ureteroscope System

with intrarenal pressure monitoring

See more. Know more. Do more.



See more. Know more. Do more.

The LithoVue Elite Single-Use Digital Flexible Ureteroscope is not an ordinary scope.

It's more.

It builds on the trusted LithoVue™ System with significant next-generation innovations, including enhanced image quality, intrarenal pressure (IRP) monitoring, direct control over image and video capturing, and seamless OR integration to help you access, visualise and treat stones.

The LithoVue Elite Single-Use Digital Flexible Ureteroscope System is the first and only ureteroscope system with IRP monitoring, giving you the power to make informed, real-time clinical decisions and see more, know more and do more in stone management.

The LithoVue Elite System is the first device that has been designed on Boston Scientific's next-generation StoneSmart™ technology platform. The system has built-in support for potential interoperability with future Boston Scientific devices.





Pressure matters

Routine measurement of intrarenal pressure (IRP) is not currently performed during ureteroscopy procedures, and complications of elevated IRP may include:

Pain^{1,2}

Renal damage and pathological changes^{1,3,4}

Systemic inflammatory response syndrome^{3,5}

Fluid absorption^{1,3,6-8}

Fever^{3,5}

Infection^{1,3,5,9}

Sepsis^{1,3,5,9}

Pyelovenous backflow^{1,3,6-8}

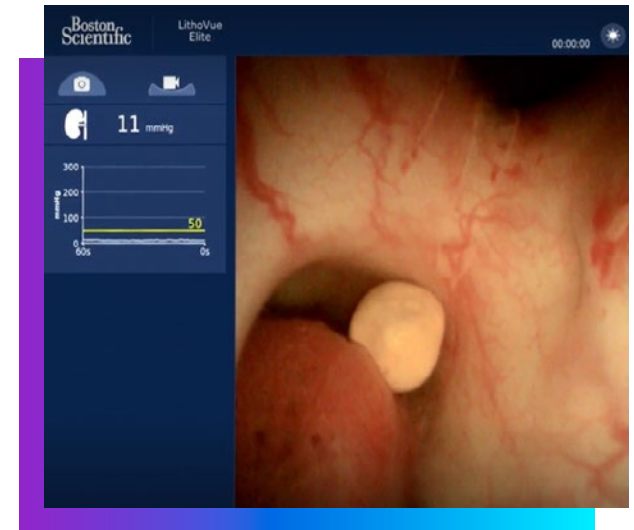


Understanding IRP as a predictor of complications has been neglected;³ however, the LithoVue Elite Single-Use Digital Flexible Ureteroscope System unlocks the potential to improve our understanding of the impact of elevated IRP on patient outcomes.

➤ See more.

Experience enhanced image quality

With a high-resolution digital chip and proprietary VividVue™ Technology image processing, the LithoVue Elite System raises the bar on image quality for single-use, flexible ureteroscopes. You can count on bright, sharp and clear images with accurate, bold colours and fast image processing for immediate visualisation along with a wide view and 270° deflection in both directions.



➤ Know more.

Monitor IRP in real-time

The LithoVue Elite System with IRP monitoring displays accurate, real-time, second-by-second, intrarenal pressure data directly on your current operating room monitor. Real-time pressure monitoring allows you to see pressure data and the scope image on one screen enabling immediate awareness of pressure within the collecting system.

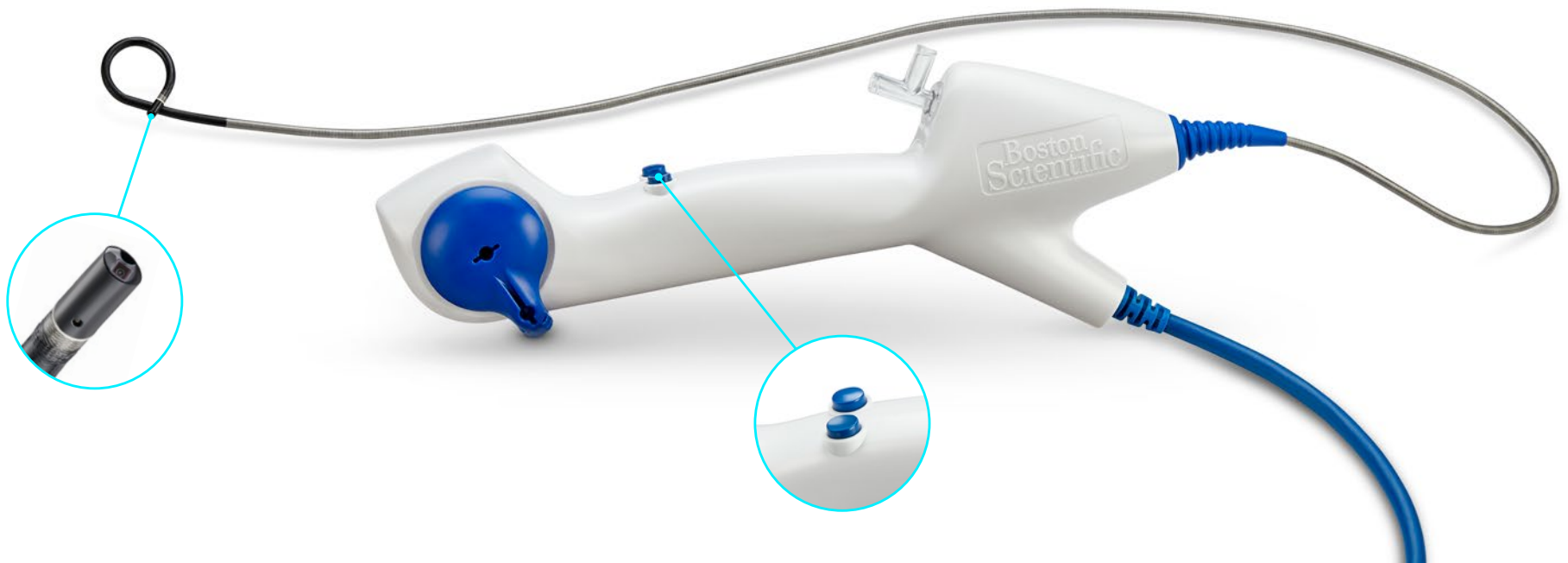
➤ Do more.

Take control of image and video capture

The LithoVue Elite System puts direct control of image and video capture from the sterile field in your hands. Programmable buttons on the scope handle enable you to record, save and export saved data without the need to coordinate with staff.

Seamlessly integrate into your OR

The StoneSmart™ Connect Console, LithoVue Elite System's compact processing unit, integrates into your operating room or existing mobile visualisation tower and is designed to reduce clutter, minimise capital footprint, and simplify switching between cystoscope and ureteroscope. The endoscopic image is displayed on your existing OR monitors to help to minimise distraction and operating room logistics.





The **LithoVue Elite Single-Use Digital Flexible Ureteroscope** is compatible with the LithoVue Empower™ Retrieval Deployment Device

Specifications

Optical working distance (depth of view)	2–50 mm
Field of view	120 degrees diagonal
Insertion portion width (distal face)	7.7F
Max. insertion portion width (overall shaft diameter)	9.5F
Shaft working length	68 cm
Working channel	3.6F
Maximum angle of deflection	270 degrees

ExpertCare Equipment Support and Services

Boston Scientific's ExpertCare Equipment Support and Services are designed to put your mind at ease so you can focus on patient care, not equipment.

Our ExpertCare team is dedicated to maximising your investment and delivering peace of mind with tailored coverage options that provide transparency and budget certainty without hidden charges for your StoneSmart™ Console.

ExpertCare service plans can help preserve your equipment uptime with access to hassle-free priority care and predictable cost of ownership.

Our knowledgeable team of technical experts genuinely care and will aim to provide prompt resolution to enable the highest quality performance out of your system.



ExpertCare Equipment Support and Services

ExpertCare Service Plans & Warranty

Boston Scientific offers service plans designed to help meet your business needs.

Service Plan Features	TotalCare 1–4 years	EssentialCare 1–4 years	Warranty First year
Access to technical support via phone or e-mail	•	•	•
24/7 phone support during patient procedure	•	•	•
48-hour replacement unit guarantee ¹	•	•	
Annual preventive maintenance visit incl. electrical safety test	•		
Annual pressure sensor calibration	•		
Software updates	•		

For more information about product specific service plans or enrolling in one of Boston Scientific's ExpertCare Equipment Support and Services get in contact with your Boston Scientific sales representative or our dedicated service sales team:

➤ CEServiceContracts@bsci.com

1. Replacement unit remains at user site (SWAP).

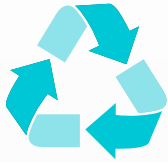
For technical support please reach out to our technical service teams:

- **+800 5555 7707** (for EMEA)
- Non-Laser support: CETechSupportEMEA@bsci.com

Reach out to our customer care for non-technical requests such as preventive maintenance or repair services:

➤ CECustomerServiceEMEA@bsci.com





Our commitment to environmental sustainability

At Boston Scientific, we strive to continually improve our environmental performance. As a commitment to our physicians, patients and the communities we serve, we carefully examine the materials we use in our products, the resources used to make and transport them, and how we can reduce waste.



Find out more about how we contribute to environmental sustainability

Let's connect

Connect with your Boston Scientific representative to determine if you could benefit from switching to the LithoVue™ Elite Single-Use Digital Flexible Ureteroscope System.



Visit our website

1. Osther PJS, Pedersen KV, Lildal SK, et al. Pathophysiological aspects of ureterorenoscopic management of upper urinary tract calculi. *Curr Opin Urol.* 2016 Jan;26(1):63-9. **2.** Pedersen KV, Liao D, Osther SS, et al. Distension of the renal pelvis in kidney stone patients: sensory and biomechanical responses. *Urol Res.* 2012 Aug;40(4):305-16. **3.** Tokas T, Herrmann TRW, Skolarikos A, et al. Pressure matters: intrarenal pressures during normal and pathological conditions, and impact of increased values to renal physiology. *World J Urol.* 2019 Jan;37(1):125-31. **4.** Schwalb DM, Eshghi M, Davidian M, et al. Morphological and physiological changes in the urinary tract associated with ureteral dilation and ureteropyeloscopy: an experimental study. *J Urol.* 1993 Jun;149(6):1576-85. **5.** Zhong W, Leto G, Wang L, et al. Systemic inflammatory response syndrome after flexible ureteroscopic lithotripsy: a study of risk factors. *J Endourol.* 2015 Jan;29(1):25-8. **6.** Twum-Ampofo JK, Eisner BH. The relationship between renal pelvis pressures and pyelovenous backflow during ureterorenoscopy in alive porcine model. AUA Abstract. 2020. **7.** Loftus C, Byrne M, Monga M. High pressure endoscopic irrigation: impact on renal histology. *Int Braz J Urol.* 2021 Mar-Apr; 47(2):350-6. **8.** Guzelburc V, Balasar M, Colakogullari M, et al. Comparison of absorbed irrigation fluid volumes during retrograde intrarenal surgery and percutaneous nephrolithotomy for the treatment of kidney stones larger than 2 cm. *Springerplus.* 2016 Oct 4;5(1):1707. **9.** Gutierrez-Aceves J, Negrete-Pulido O, Avila-Herrera P. Perioperative Antibiotics and Prevention of Sepsis in Genitourinary Surgery. In Smith AD, Badlani GH, Preminger GM, Kavoussi LR (Eds.), *Smith's Textbook of Endourology.* New York, NY: Blackwell Publishing Ltd., 2012:38-52. **10.** Data on file with Boston Scientific.

Bench test and pre-clinical results may not necessarily be indicative of clinical outcomes. All images are the property of Boston Scientific. All trademarks are the property of their respective owners. CAUTION: The law restricts these devices to sale by or on the order of a physician. Indications, contraindications, warnings, and instructions for use can be found in the product labelling supplied with each device or at www.IFU-BSCI.com. Products shown for INFORMATION purposes only and may not be approved or for sale in certain countries. This material not intended for use in France. The information in this brochure is descriptive. Please see your service plan quote and terms and conditions for details.

CE 0344

**Boston
Scientific**
Advancing science for life™

www.bostonscientific.eu

© 2024 Boston Scientific Corporation
or its affiliates. All rights reserved.
URO-1328704-AA