

LithoVue™

Single-Use Digital Flexible Ureteroscope

Boston
Scientific

Advancing science for life™

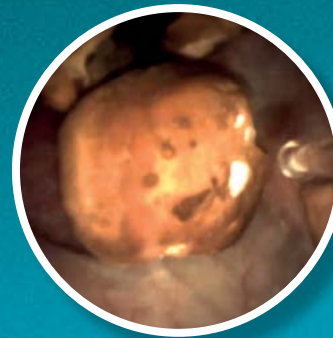


**No repairs.
No sterilization.
No compromise.**

LithoVue™

Single-Use Digital Flexible Ureteroscope

The LithoVue Single-Use Ureteroscope delivers detailed, high-resolution digital images across a broad depth of field – to guide the way during ureteroscopy procedures.



A digital CMOS imager in the tip has a working distance of 2mm–50mm to offer a deep field of view.



With full 270° scope deflection in both directions, as well as standard and reverse options, you have the flexibility to perform your procedures the way you prefer.

Compatible with laser lithotripsy: uses existing technologies and familiar surgical tools.

Flexible sheath has a 3.6F ID working channel.

Mobile cart for portability.

**Boston
Scientific**



A 7.7F tip diameter and 9.5F [$\leq 3.23\text{mm}$] outer diameter easily fits the average human ureter with renal colic.¹

The LED light source is integrated, and there's no need to white balance.

Integrated camera head, no secondary external attachments required.

Ergonomically designed, lightweight handle with built-in light source.



All-in-one, touch-screen PC includes the monitor, image processing software and controller.

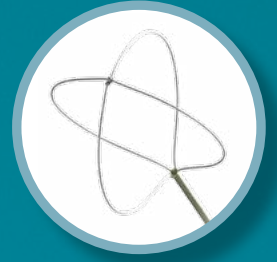


Compatibility

The LithoVue System is fully compatible with established Boston Scientific products, such as:



Dakota™
Nitinol Stone Retrieval Device



ZeroTip™
Nitinol Stone Retrieval Basket



Navigator HD™
Ureteral Access Sheath



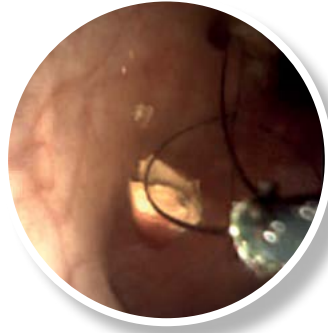
Sensor™
PTFE-Nitinol Guidewire with Hydrophilic Tip



AccuTrac™
Single-Use Holmium Laser Fiber



SureDrive™
Steerable Ureteral Stent



Ordering Information

UPN Product Number	Description
LithoVue SUD only	
M0067913500	LithoVue – Global Standard
M0067913600	LithoVue – Global Reverse
LithoVue™ System Workstation (Includes Touch PC, Cart, Power Cord, and User's Manual)	
M0067911000	LithoVue System Workstation Global
Touch PC	
M0067917000	LithoVue Touch PC
Cart	
M0067914200	LithoVue System Workstation Cart
LithoVue System Power Cord	
M0067912200	LithoVue System Power Cord – UK
M0067913480	LithoVue System Replacement Power Adaptor
LithoVue System Workstation User's Manual	
M0067913000	LithoVue User's Manual
Accessories and Miscellaneous	
M0067911430	Software Upgrade
M0067911440	DVI Video Cable

1. Song HJ, Cho ST, Kim KK. Investigation of the location of the ureteral stone and diameter of the ureter in patients with renal colic. *Korean J Urol.* 2010;51(3):198-201.

All cited trademarks are the property of their respective owners.

CAUTION: Law restricts these devices to sale by or on the order of a physician. Indications, contraindications, warnings and instructions for use can be found in the product labelling supplied with each device. Information for the use only in countries with applicable health authority product registrations. Material not intended for use in France.

UROPH-460520-AA March2017. Produced by Gosling.