

# AMS 700™ with MS Pump™ Inflatable Penile Prosthesis

## Patient Guide

Introduction..... 1

What to expect after the procedure ..... 2

How to use my device ..... 3

What symptoms may indicate that I should contact my doctor?..... 5

Frequently asked questions ..... 6

Where can I get more information about my device? ..... 7

Score & Fold

Perforation

**EC REP** EU Authorized Representative

Boston Scientific Limited  
Ballybrit Business Park  
Galway  
IRELAND

**AUS** Australian Sponsor Address

Boston Scientific (Australia) Pty Ltd  
PO Box 332  
BOTANY  
NSW 1455  
Australia  
Free Phone 1800 676 133  
Free Fax 1800 836 666

**ARG** Argentina Local Contact

Para obtener información de contacto de Boston Scientific Argentina SA, por favor, acceda al link [www.bostonscientific.com/arg](http://www.bostonscientific.com/arg)

**Legal Manufacturer**

Boston Scientific Corporation  
300 Boston Scientific Way  
Marlborough, MA 01752  
USA  
USA Customer Service 888-272-1001

**CE 2797**

© 2020 Boston Scientific Corporation or its affiliates. All rights reserved.

2020-02



Place AMS 700 Cylinder or preconnected system label here.

**MRI safety information:**

This implant is MR Conditional to 3.0 Tesla



**Security Screening:** The metal in your implant may be detectable.

**To request a new card:**

Please contact the Patient Liaison at:  
U.S. Toll Free: 1-800-328-3881, Option 2

Implanting Surgeon: \_\_\_\_\_  
Surgeon Telephone: \_\_\_\_\_  
Emergency Contact: \_\_\_\_\_  
Contact Telephone: \_\_\_\_\_

USA Customer Service 888-272-1001  
©2020 Boston Scientific Corporation or its affiliates. All rights reserved.



**Patient ID Card**

**AMS 700™ with MS Pump™  
Inflatable Penile Prosthesis**

**Important Physician Information**

This person has an AMS 700 with MS Pump Series Three-Piece Inflatable Penile Prosthesis implanted to treat erectile dysfunction.

Patient Name: \_\_\_\_\_  
Patient Telephone: \_\_\_\_\_  
Implant Date: \_\_\_\_\_

Score & Fold

Score & Fold

Guide Outside Cover

Score &amp; Fold

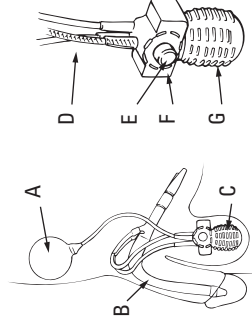
Perforation

**Design:** The implant is a closed, fluid-filled system consisting of three components: a reservoir, a pair of cylinders implanted in the shaft of the penis, and a pump implanted in the scrotum (Figure 1). Kink resistant tubing connects the components, which are made from silicone elastomer.

**To inflate:** Grasp the tubing above the deflation block with one hand. Using the other hand, squeeze and release the pump bulb quickly and firmly. Then squeeze and release the bulb several times until the cylinders fill with fluid and become erect. Do not squeeze the deflation button while squeezing the bulb.

**To deflate:** Grasp the tubing above the deflation block with one hand. Using the other hand, place the thumb and forefinger on opposite sides of the

deflation block. Squeeze the deflation button for about 4 seconds, and then release it.



- A. Reservoir
- B. Cylinders
- C. Pump
- D. Tubing
- E. Deflation Button
- F. Deflation Block
- G. Pump Bulb

**Figure 1**

Place patient AMS 700™  
Reservoir label here.

Place patient Rear Tip  
Extender label here if used.

Place AMS 700 MS Pump™  
label here if a preconnected  
system was not used.

# AMS 700™ with MS Pump™ Inflatable Penile Prosthesis

## Patient Guide

### Introduction

The AMS 700 with MS Pump Inflatable Penile Prosthesis is a fluid-filled device that is implanted entirely within the body and is not visible. The implant consists of three components connected by tubing (Figure 1): a reservoir, two cylinders, and an inflate/deflate pump. Some AMS 700 devices contain anti-infection properties. The fluid-filled reservoir is implanted in the pelvic area near the bladder or location chosen by the doctor. The reservoir holds the fluid until the patient decides to inflate the cylinders. The two cylinders are inserted side by side in the shaft of the penis. The pump, consisting of a pump bulb and a deflation button, is placed in the scrotum (Figures 1 and 2). The pump is used to inflate and deflate the cylinders by transferring fluid from the reservoir to the cylinders. The pump bulb is the rounded part at the bottom of the pump. The deflation button is above the bulb on the firm, rectangular shape of the pump.

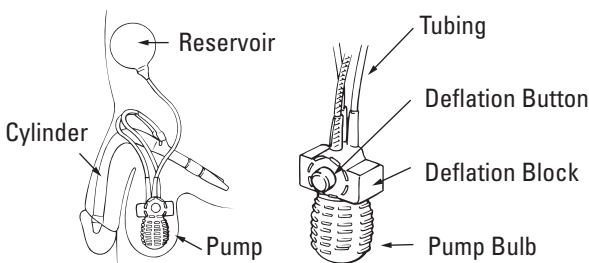
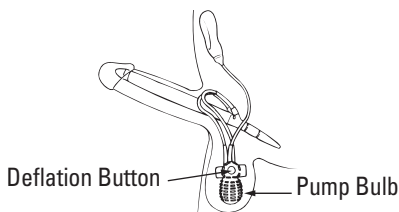


Figure 1



**Figure 2**

## What to expect after the procedure

Your doctor will provide guidance on positioning your penis and the type of undergarment to use during your healing period. After voiding you should carefully reposition your penis per your doctor's guidance.

Like with most surgery, you may experience pain or discomfort at the operative site(s) immediately following your surgery and when you first use your implant. In most cases the pain goes away within a few weeks of surgery; however, cases of chronic (continuing) pain have been reported.

Recovery times vary from patient to patient. You will be able to return to work and everyday activities at the discretion or direction of your doctor. After three to six weeks your doctor may instruct you to cycle the device for the first time.

Your doctor will discuss when you will be able to use your device. Most doctors recommend that you wait four to six weeks before having intercourse. This time allows your incision site to heal and help your body adapt to your implant. You will probably have an appointment with your doctor during the recovery period to be sure you are healing properly. At your doctor's discretion, you may have additional visits or follow-ups from this procedure.

After your doctor says you can begin using the device, follow the operating instructions.

During the recovery time and after, take care to avoid trauma to the pelvic or abdominal area. Always keep in mind that you have had a surgical implant and choose your activities wisely. Examples of such trauma may include a seat belt jolt from a car accident, being tackled in contact sports, or slipping and falling on ice. Trauma may damage the implant or surrounding tissues. Use of injection therapy in the pelvic or abdominal area, or additional treatment in that area, may also damage the implant. Always talk to your doctor about medical procedures you may undergo in the future.

Additionally, your doctor may ask you to take antibiotics before and after any dental or surgical procedure as a precautionary measure to prevent infection.

## How to use my device

### Inflating the implant

When you squeeze and release the pump bulb, the fluid moves from the reservoir, through the pump and into the cylinders. When the cylinders fill with fluid, the penis becomes erect.

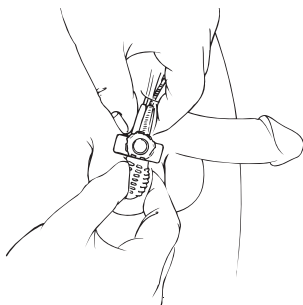
1. Feel for the pump in your scrotum.
2. Grasp the tubing above the deflation block with one hand, to hold the pump in place.
3. Initially, squeeze the pump bulb **quickly** and **firmly**, and then release it to activate the pump (Figure 3).

The remaining pump bulb squeezes can be slower. Releasing allows the inflation bulb to refill with fluid. Continue to alternate squeezing and releasing until the cylinders fill with fluid and become erect. Full erection may take multiple squeezes of the pump bulb. Be sure to talk to your doctor for the optimal number of squeezes.

---

**Note:** Do not squeeze the deflation button while squeezing the pump bulb.

---

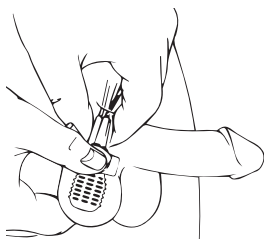


**Figure 3**

## **Deflating the implant**

When you squeeze the deflation button for about four seconds the fluid begins to leave the cylinders and return to the reservoir. After about four seconds release the deflation button and the cylinders will return to their deflated position. The penis becomes soft (flaccid).

1. Feel for the pump in your scrotum.
2. Grasp the tubing above the deflation block with one hand, to hold the pump in place.
3. With your other hand, locate the raised deflation button on the deflation block.
4. To effectively squeeze the deflation button, you must place a thumb and forefinger on opposite sides of the deflation block (Figure 4).



**Figure 4**

5. Squeeze the deflation button for about four seconds and then release. The cylinders will continue to deflate and your penis will become soft (flaccid).

---

**Note:** Do not squeeze the deflation button while squeezing the pump bulb.

---

6. After the cylinders have deflated, you may squeeze your penis to make it more flaccid.

## **What symptoms may indicate that I should contact my doctor?**

As with any medical procedure, there is the possibility that complications may develop after the procedure.

- Unusual or prolonged pain
- Redness or rash near the incision or scrotum
- Swelling near the incision, scrotum or penis
- Pus coming from the incision or head of the penis
- Hives
- Fever
- Any problems with urination

You should contact your doctor immediately if any of these symptoms occur.

## Frequently asked questions

Below are answers to some of the more frequently asked questions about penile prostheses. Talk to your doctor about any additional questions you may have.

### **Will I have to take any precautions before undergoing future medical procedures?**

It is important to tell your healthcare provider that you have a penile implant to prevent damage or injury.

### **Can I have magnetic resonance imaging (MRI)?**

The device is MR Conditional, meaning that you can be MRI scanned safely within certain limits. Talk to your doctor before undergoing MRI scanning.

### **Can I go through security screening?**

When you walk through security screening, the metal in your implant may be detectable. Since most inflatable penile implants have minimal metal parts, they should not set off a metal detector; however, if detected, tell the Security Officer that you have an implanted medical device. It is recommended that individuals with an implanted medical device carry a Patient Identification Card that identifies them as a medical device patient.

**If you do not have a Patient Identification Card or if you have questions about your device as it relates to MRI or security screening, please ask your doctor or contact the Men's Health patient liaison at 1-800-328-3881, option 2.**



## **What do I do if the cylinders are difficult to inflate, or if they won't inflate?**

Reset the pump by following these steps:

1. Squeeze the deflation button to refill the pump bulb.
2. Reactivate the pump with a **HARD, QUICK** squeeze of the pump bulb.
3. Inflate the device normally.

*If this doesn't resolve the problem,*

1. Squeeze the sides of the deflation block to refill the pump bulb.
2. Squeeze the deflation button for 2-4 seconds to reset the lock-out mechanism.
3. Reactivate the pump with a **HARD, QUICK** squeeze of the pump bulb.
4. Inflate the device normally.

**DO NOT squeeze the deflation button and pump bulb at the same time.**

**DO NOT squeeze the ends of the deflation block while squeezing the pump bulb at the same time.**

## **Where can I get more information about my device?**

Your best resource is your doctor. Your doctor is most familiar with your medical situation and can work with you to make sure you get the best possible results from the penile implant. You can also call the Men's Health patient liaison at 1-800-328-3881, option 2, or visit our website at [www.bostonscientific.com](http://www.bostonscientific.com).

