



AMS 800™ Artificial Urinary Sphincter

Considered a gold standard treatment for moderate to severe male stress urinary incontinence

The AMS 800 is a clinically proven, trusted device designed to help patients achieve continence in one surgery

Urologist benefits

- Designed to treat stress urinary incontinence (SUI) following prostate procedures
- Established outcomes:
 - More than 50 years of artificial urinary sphincter clinical use, with over 250,000 devices sold*
 - Published long-term studies determined that 60-96% of patients that underwent primary and secondary AUS implantation reported using 0-1 pads per day (PPD) following their procedure**1-4
 - InhibiZone™ Antibiotic Surface Treatment is designed to be effective against bacteria commonly associated with implants
 - In a study of 105 male patients implanted with an AMS 800 AUS, 90% of patients with a history of urethroplasty (n=30) and 94.7% of nonurethroplasty patients (n=75) were satisfied with the overall surgical outcome³

Patient benefits

- Mimics healthy sphincter function by opening and closing the urethra under the patient's control
- Variety of component sizes and pressures designed to fit patient anatomy
- Can be used in combination with the AMS 700™ Inflatable Penile Prosthesis

In a study, 94% of 148 male patients surveyed would "definitely" or "probably" recommend the surgery to a family member or friend⁵

One study of 57 male patients found approximately 90% of long-term (more than 10 years) patients are satisfied overall⁶



*50 years and 250,000 sold is inclusive of all AUS devices since 1972

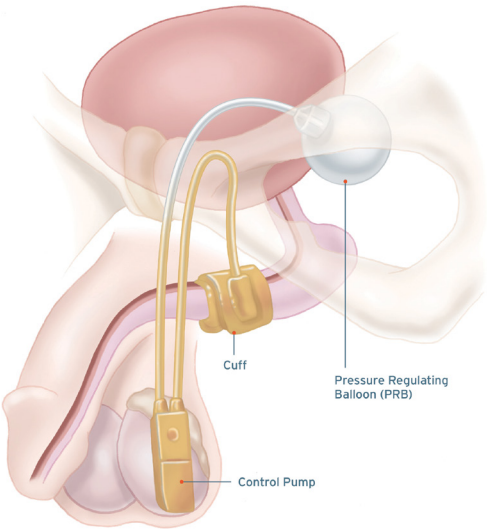
**Follow-up times vary between studies and groups with the mean/median times ranging between 4 - 6 years.

Mechanism of action

The AMS 800™ Artificial Urinary Sphincter is designed to simulate normal sphincter function by opening and closing the urethra, under patient control. When the cuff is closed, urine stays in the bladder.

Ordering information

Description	Order Number with InhibiZone	Order Number Non-InhibiZone
Control pump	72404127	72400098
Occlusive cuff		
3.5 cm	720157-01	720133-01
4.0 cm	72404130	72400160
4.5 cm	72404131	72400161
5.0 cm	72404132	72400162
5.5 cm	72404133	72400163
6.0 cm	72404134	72400164
6.5 cm	72404135	72400165
7.0 cm	72404136	72400166
7.5 cm	72404137	72400167
8.0 cm	72404138	72400168
9.0 cm	72404140	72400170
10.0 cm	72404142	72400172
11.0 cm	72404144	72400174



Description	Order Number
Accessory kit - U.S.	720066-01
Accessory kit - Europe	72401685
Pressure regulating balloon	
51-60 cm H ₂ O	72400023
61-70 cm H ₂ O	72400024
71-80 cm H ₂ O	72400025
Deactivation package	72400095
Insertion package	72100005
AMS Quick Connect Assembly Tool	72400271

1. Raj GV, Peterson AC, Toh KL, et al. Outcomes following revisions and secondary implantation of the artificial urinary sphincter. *J Urol.* 2005 Apr;173(4):1242

2. Suh YS, Ko KJ, Kim TH, Sung HH, Lee KS. Long-term outcomes of primary implantation and revisions of artificial urinary sphincter in men with stress urinary incontinence. *Neurourol Urodyn.* 2017;36(7):1930-1937. doi:10.1002/nau.23221

3. Sayedahmed K, Ollanas R, Kaftan B, et al. Impact of previous urethroplasty on the outcome after artificial urinary sphincter implantation: a prospective evaluation. *World J Urol.* 2020;38(1):183-191. doi:10.1007/s00345-019-02756-0

4. Deruyver Y, Schillebeeckx C, Beels E, et al. Long-term outcomes and patient satisfaction after artificial urinary sphincter implantation. *World J Urol.* 2022;40(2):497-503. doi:10.1007

5. Linder BJ, Rivera ME, Ziegelmann MJ, et al. Long-term outcomes following artificial urinary sphincter placement: an analysis of 1082 cases at Mayo clinic. *Urology.* 2015 Sep;86(3):602-7.

6. Léon P, Chartier-Kastler E, Rouprêt M, et al. Long-term functional outcomes after artificial urinary sphincter implantation in men with stress urinary incontinence. *BJU Int.* 2015 Jun;115(6):951-7.