



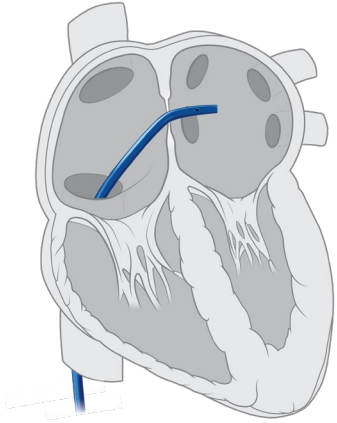
TorFlex™
Transseptal Guiding Sheath



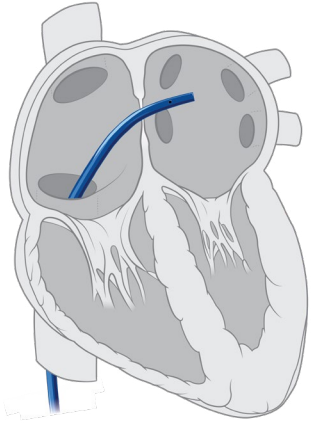
SMOOTH AND CONTROLLED CROSSING.™

TorFlex™ Transseptal Guiding Sheath

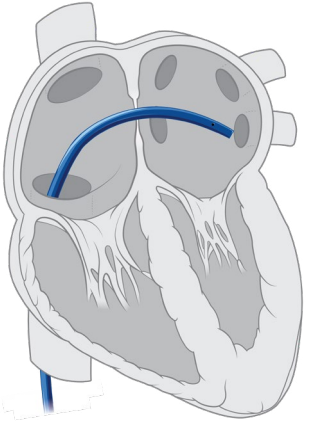
Boston Scientific is committed to innovations in transseptal punctures. Our transseptal products are designed to provide a smooth and controlled transseptal puncture.



45° Curve
Left atrium — Posterior

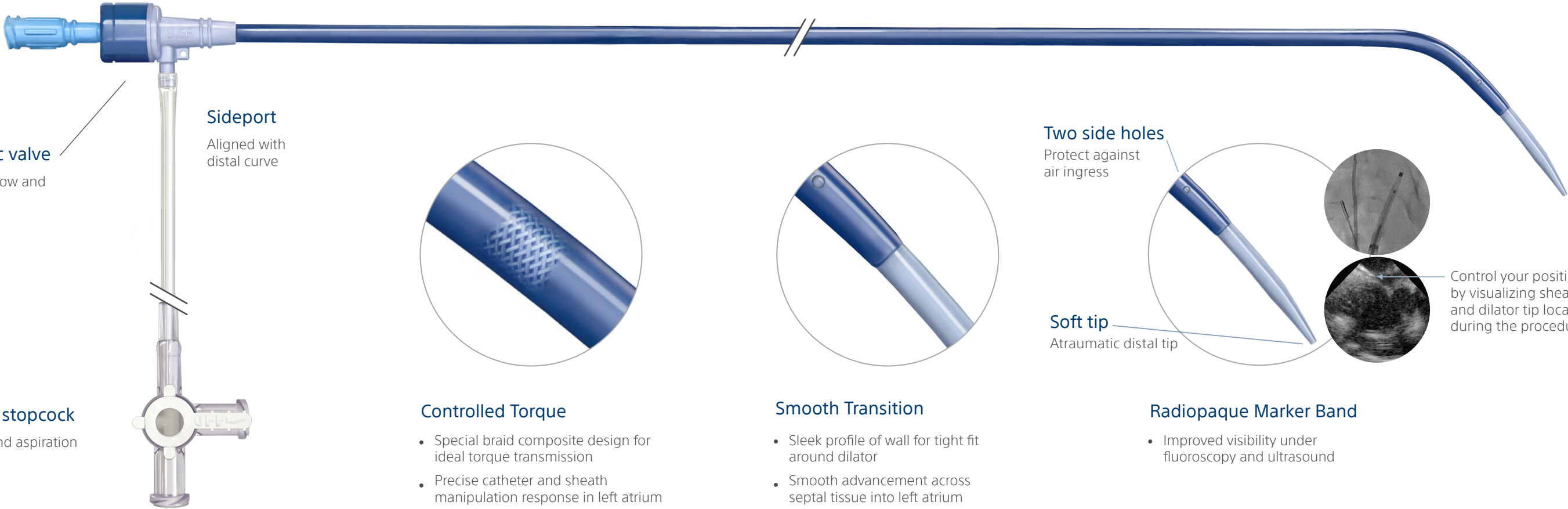


55° Curve
Left atrium — Posterior



90° Curve
Left atrium — Inferior

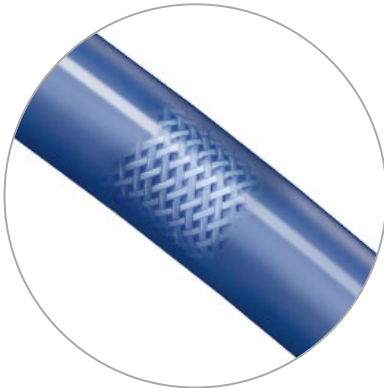
Reliable and consistent hub-snap mechanism



Hemostatic valve
Prevent backflow and air ingress

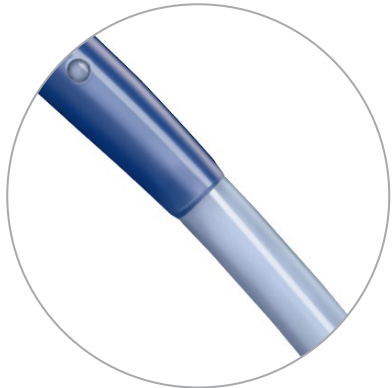
Sideport
Aligned with distal curve

Three-way stopcock
For flushing and aspiration



Controlled Torque

- Special braid composite design for ideal torque transmission
- Precise catheter and sheath manipulation response in left atrium

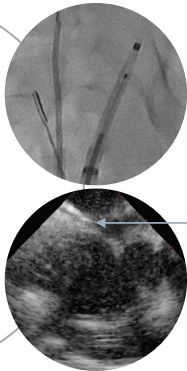


Smooth Transition

- Sleek profile of wall for tight fit around dilator
- Smooth advancement across septal tissue into left atrium

Two side holes
Protect against air ingress

Soft tip
Atraumatic distal tip



Control your position by visualizing sheath and dilator tip location during the procedure

Radiopaque Marker Band

- Improved visibility under fluoroscopy and ultrasound

TorFlex™ Transseptal Guiding Sheath

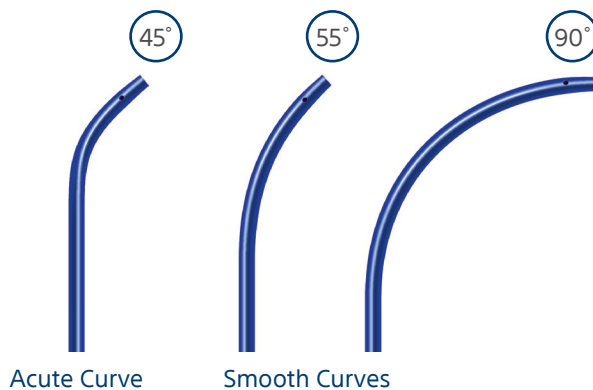
SPECIFICATIONS

Feature	Specification
French size compatibility	8.5F (2.8 mm)
Sheath usable length	63 cm, 81 cm
Sheath radiopaque marker	Platinum/iridium band
Sheath curves	45°, 55°, 90°
Dilator usable length	67 cm, 85 cm
Dilator inner diameter	0.032 in (0.8 mm)
Guidewire max outer diameter	0.032 in (0.81 mm)
Guidewire length	180 cm

ORDERING INFORMATION

French size compatibility	Guidewire max outer diameter	Sheath usable length	Sheath curve
TF85	- 32	- 63	- 45
TF85	- 32	- 63	- 55
TF85	- 32	- 63	- 90
TF85	- 32	- 81	- 45

CURVES



[Indications, safety and warnings for TorFlex™ Transseptal Guiding Sheath](#)

All trademarks are property of their respective owners. Patents Pending and/or issued. CAUTION: The law restricts this device to sale by or on the order of a physician. Rx only. Indications, contraindications, warnings, and instructions for use can be found in the product labelling supplied with each device or at www.IFU-BSCI.com.

Products shown for INFORMATION purposes only and may not be approved or for sale in certain countries. This material not intended for use in France.

Boston Scientific is a Global Company. Please note that model numbers, indications, contraindications, warnings and specifications may differ depending on geographic region. Not all information displayed in this brochure may be licensed in accordance with Canadian law. Please contact your Boston Scientific representative for local labeling, product specifications and licensed model numbers.

Boston Scientific
Advancing science for life™

Boston Scientific Corporation
300 Boston Scientific Way
Marlborough, MA 01752 USA
www.bostonscientific.com

Customer Service
United States: 1-888-272-1001
Canada: 1-888-359-9691

© 2025 Boston Scientific Corporation or its affiliates. All rights reserved.

EP-1557808-AC