

# Radiofrequency Ablation



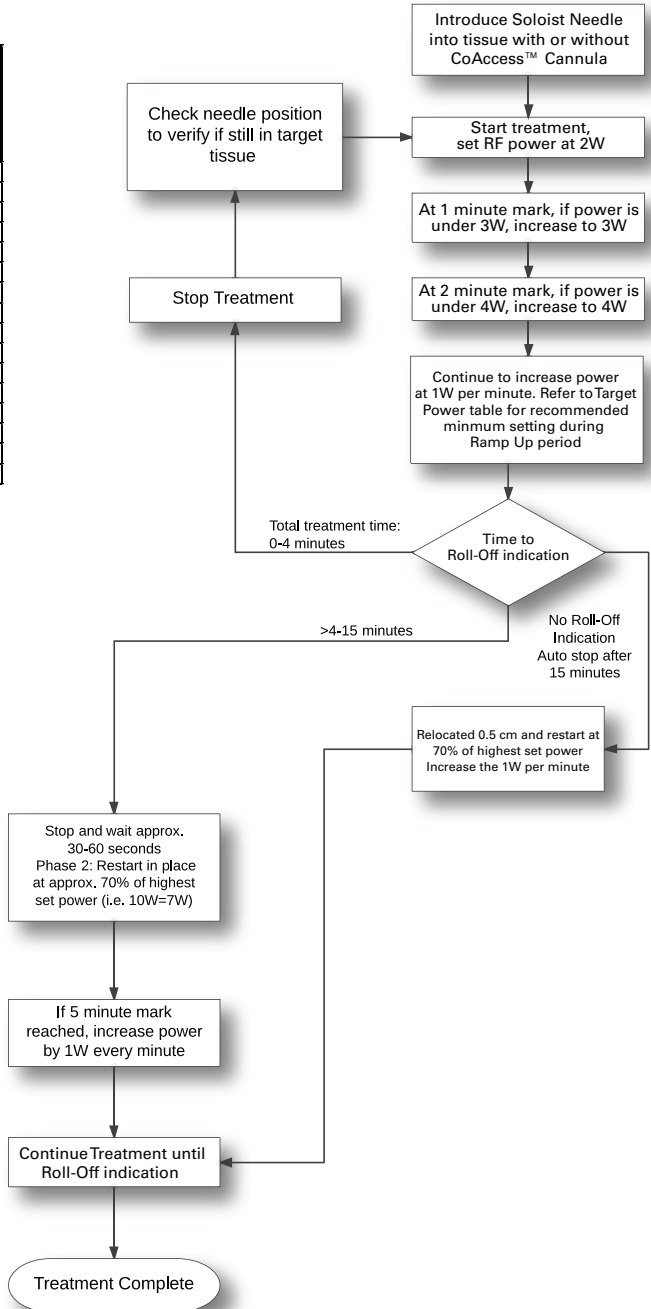
## Algorithm Cards

# Soloist™

## Single Needle Electrode

Treatment Time Point (min:sec)	Target Power during Ramp Up (Watts)
0:00	2
1:00	3
2:00	4
3:00	5
4:00	6
5:00	7
6:00	8
7:00	9
8:00	10
9:00	11
10:00	12
11:00	13
12:00	14
13:00	15
14:00	16
15:00	17

Roll-Off Indication Power (Watts)	70% Watts
2	2
3	2
4	3
5	4
6	4
7	5
8	6
9	6
10	7
11	8
12	8



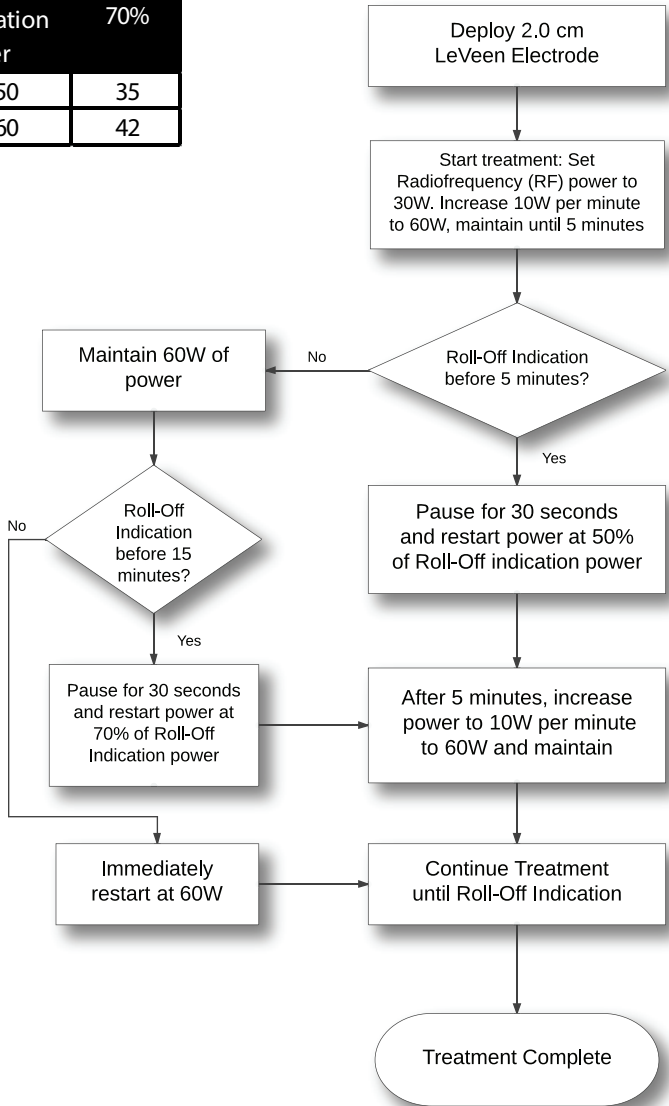
Soloist and CoAccess are registered or unregistered trademarks of Boston Scientific Corporation or its affiliates.

## Soloist™ Single Needle Electrode (16.5ga)

UPN	Order Number	Active Electrode Length (cm)	Cannula Length (cm)
M001262500	26-250	0.9	18.0

# LeVeen™ Electrode 2.0 cm

Roll-Off Indication Power		70%
50	35	
60	42	

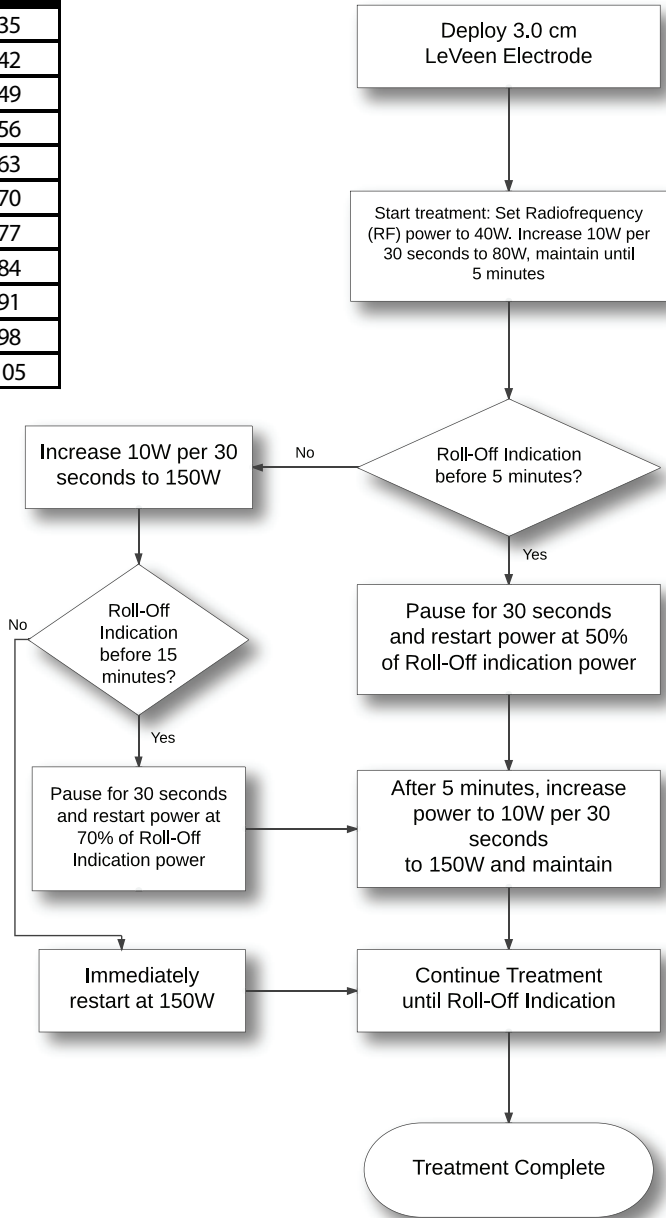


## LeVeen™ SuperSlim™ Needle Electrode System

UPN	Order Number	Array Diameter (cm)	Cannula Length (cm)
M001 <b>262270</b>	26-227	2.0	25.0
M001 <b>262260</b>	26-226	2.0	15.0

# LeVeen™ Electrode 3.0 cm

Roll-Off Indication Power	70%
50	35
60	42
70	49
80	56
90	63
100	70
110	77
120	84
130	91
140	98
150	105



## LeVeen™ Standard Needle Electrode System

UPN	Order Number	Array Diameter (cm)	Cannula Length (cm)
M001 <b>262040</b>	26-204	3.0	12.0
M001 <b>262050</b>	26-205	3.0	15.0

## LeVeen SuperSlim™ Needle Electrode System

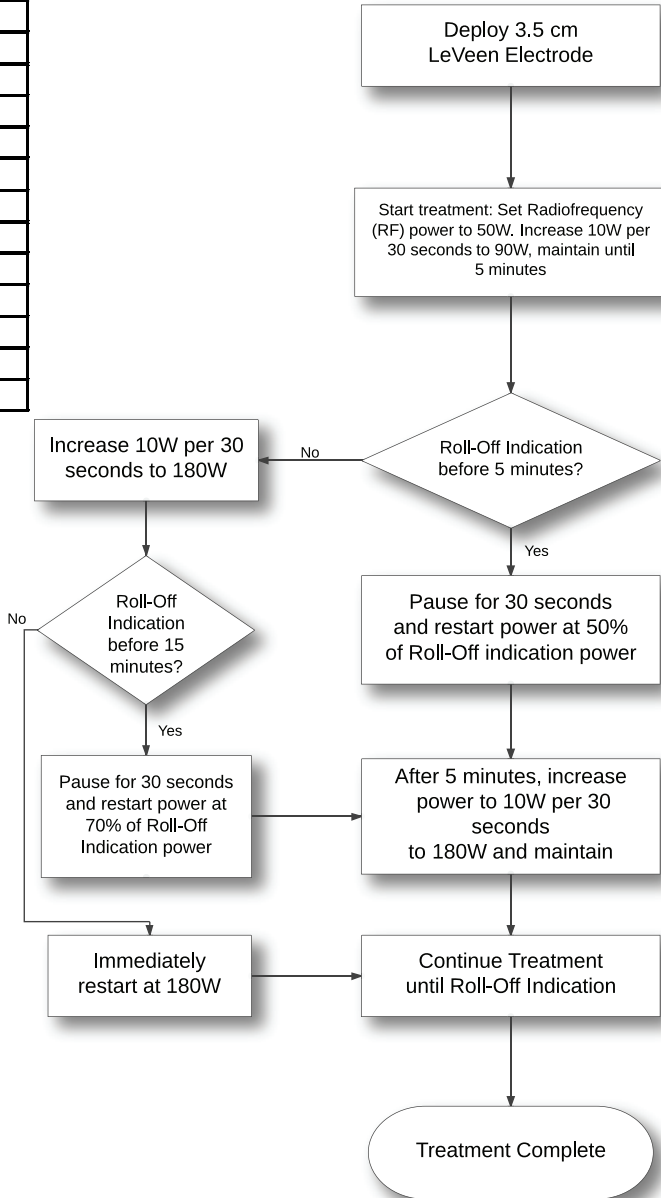
UPN	Order Number	Array Diameter (cm)	Cannula Length (cm)
M001 <b>262290</b>	26-229	3.0	25.0
M001 <b>262280</b>	26-228	3.0	15.0

## LeVeen CoAccess™ Needle Electrode System

UPN	Order Number	Array Diameter (cm)	Cannula Length (cm)
M001 <b>262220</b>	26-222	3.0	15.0

# LeVeen™ Electrode 3.5 cm

Roll-Off Indication Power	
50	35
60	42
70	49
80	56
90	63
100	70
110	77
120	84
130	91
140	98
150	105
160	112
170	119
180	126





## LeVein™ Standard Needle Electrode System

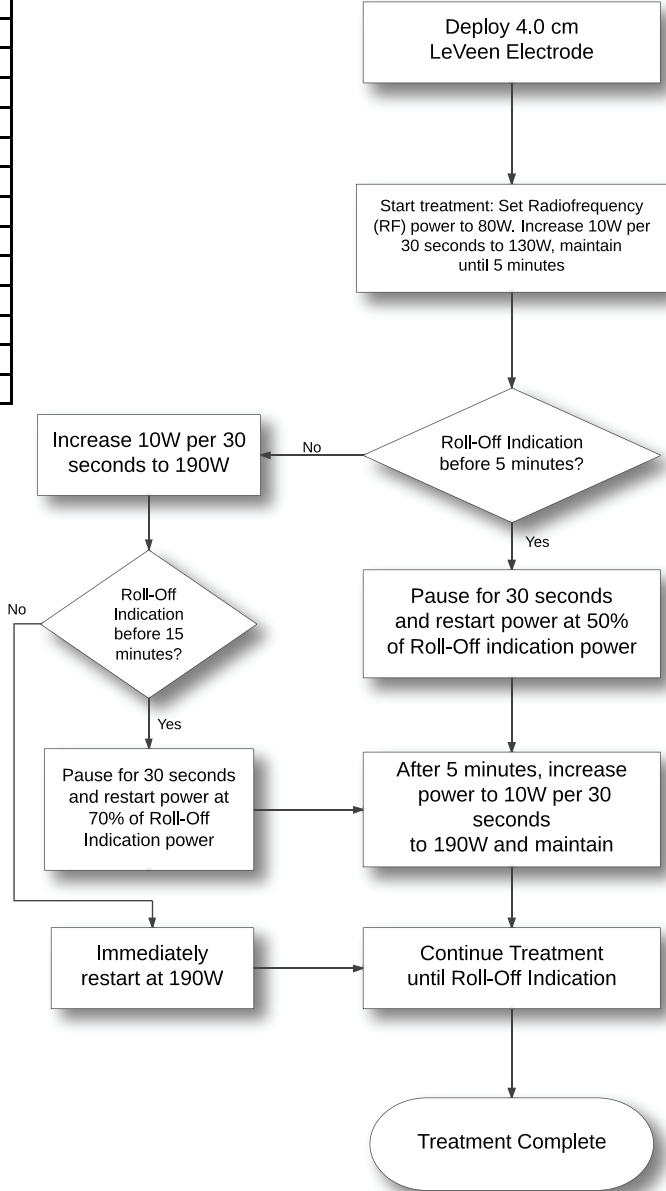
UPN	Order Number	Array Diameter (cm)	Cannula Length (cm)
M001 <b>262020</b>	26-202	3.5	12.0
M001 <b>262030</b>	26-203	3.5	15.0
M001 <b>262150</b>	26-215	3.5	25.0

## LeVein CoAccess™ Needle Electrode System

UPN	Order Number	Array Diameter (cm)	Cannula Length (cm)
M001 <b>262230</b>	26-223	3.5	15.0

# LeVeen™ Electrode 4.0 cm

Roll-Off Indication Power		70%
50	35	
60	42	
70	49	
80	56	
90	63	
100	70	
110	77	
120	84	
130	91	
140	98	
150	105	
160	112	
170	119	
180	126	
190	133	



## LeVeen™ Standard Needle Electrode System

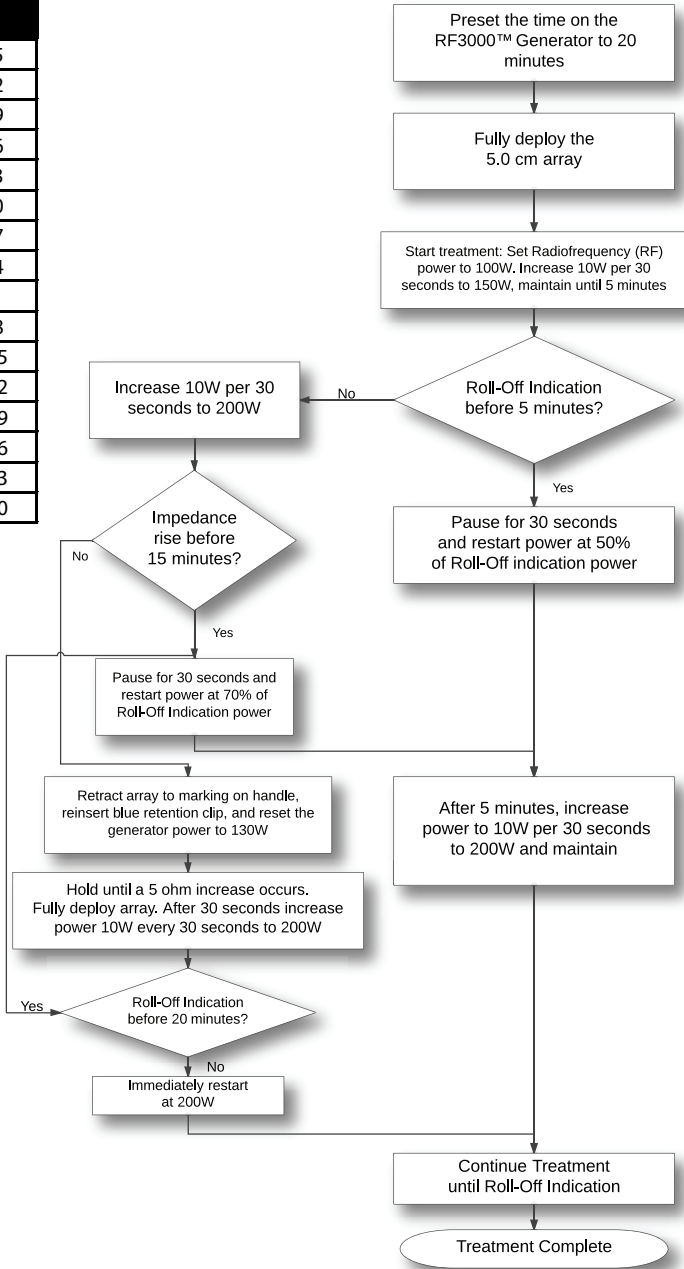
UPN	Order Number	Array Diameter (cm)	Cannula Length (cm)
M001 <b>262130</b>	26-213	4.0	15.0
M001 <b>262310</b>	26-231	4.0	25.0

## LeVeen CoAccess™ Needle Electrode System

UPN	Order Number	Array Diameter (cm)	Cannula Length (cm)
M001 <b>262240</b>	26-224	4.0	15.0

# LeVeen™ Electrode 5.0 cm

Roll-Off Indication Power	
70%	
50	35
60	42
70	49
80	56
90	63
100	70
110	77
120	84
130	91
140	98
150	105
160	112
170	119
180	126
190	133
200	140



## LeVeen™ Standard Needle Electrode System

UPN	Order Number	Array Diameter (cm)	Cannula Length (cm)
M001 <b>262160</b>	26-216	5.0	15.0
M001 <b>262170</b>	26-217	5.0	25.0

## The LeVeen Needle Electrode Family

**Caution:** Federal law (USA) restricts this device to sale by or on the order of a physician.

Prior to use, please see the complete "Directions for Use" for more information on Indications, contraindications, Warnings, Precautions, Adverse Events, and Operator's Instructions.

**Indications for Use:** The LeVeen™, SuperSlim™, and Soloist™ Needle Electrode Families are intended to be used in conjunction with the RF 3000™ Generator for the thermal coagulation necrosis of soft tissues, including partial or complete ablation of nonresectable liver lesions.

**Contraindications for Use:** None Known

**Warning:** Do not use in main biliary ducts, gallbladder or during pregnancy. Do not use in MR Suite. Use of the electrode without the colored insulated cannula may result in serious burns to the patient and/or user. Damage to the insulation of the introducer may result in serious burns to the patient and/or user.

**Precautions:** The LeVeen, SuperSlim, and Soloist Needle Electrode Families must be used in conjunction with the Boston scientific RF 3000 Generator.

**Potential Complications:** Potential complications include, but are not limited to: Abscess, ARDS, Ascites, Arterial Fibrillation, Biloma, Bowel Perforation, Burn, Death, Delayed hemorrhage into ablated tissue, Diarrhea, Electric Shock, Fistula including biliary fistula, Hematoma, Hemorrhage, Infection, Liver Failure, Liver Insufficiency, Pain, Peritonitis, Persistent Fever >39°C, Pleural Effusion, Pneumothorax, Renal Failure, Tumor recurrence, Tumor Seeding, Ventricular Fibrillation.

Prior to use, please consult device DFU for full indications, contraindications, warnings, precautions, adverse events and operating instructions.

RF 3000, LeVeen, SuperSlim, CoAccess and Soloist are registered or unregistered trademarks of Boston Scientific Corporation or its affiliates.



### Peripheral Interventions

One Boston Scientific Place  
Natick, MA 01760-1537 USA  
[www.bostonscientific.com](http://www.bostonscientific.com)

*To order product or for more information  
contact customer service at 1.888.272.1001.*

© 2014 Boston Scientific Corporation  
or its affiliates. All rights reserved.

PI-220603-AA FEB2014