

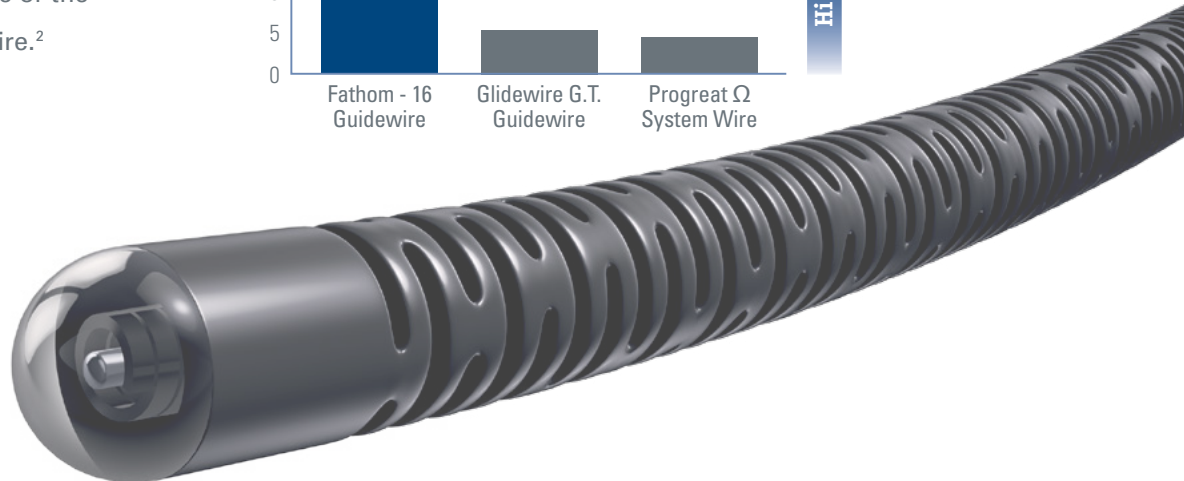
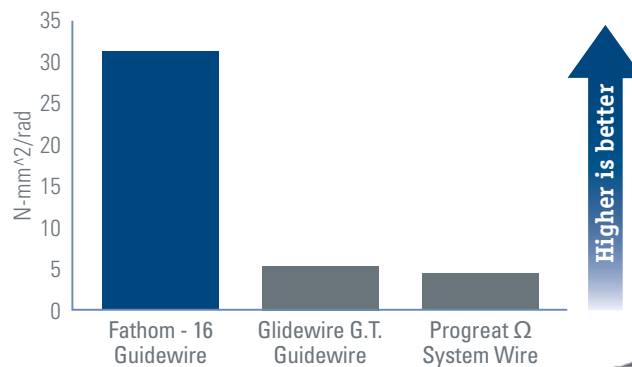
Fathom-16 Guidewire vs. Terumo Glidewire GT

NEW: Angled Tips Shapes and Radial Lengths!

The market leading Fathom-16 guidewire just got better.

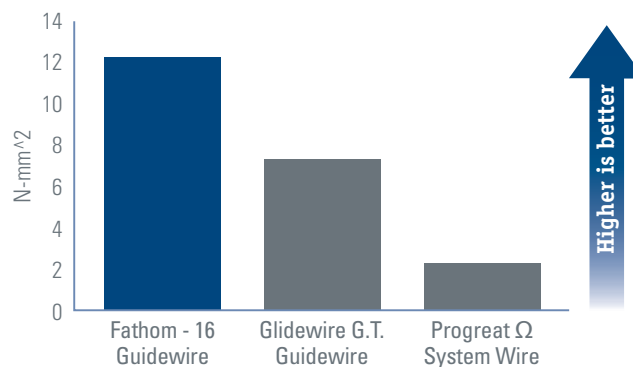
Torsional Response

In bench testing, Fathom - 16 Guidewire measured **five times more torque responsive** than either Terumo G.T. Guidewire or the Progreat Ω System Wire.²



Rail Support

Fathom - 16 Guidewire offers a **minimum of 67% more rail support** for improved pushability than Terumo Glidewire G.T. Guidewire or the Progreat Ω System Wire in bench testing.³



¹ Bench testing data on file at Boston Scientific Corporation. Bench test results not necessarily predictive of clinical performance.

² Test Description: Distal tip of guidewire is constrained in a load cell. The guidewire is rotated at proximal end and the corresponding torque to rotate the distal end is measured. N=15. Std Dev: 2.87, 0.57, 0.29

³ Test Description: 3 point bend test. Force required to bend specimen to an appropriate deflection in the distal segment (proximal to the soft distal tip). N=15. Std Dev: 0.574, 0.574, 0.287

Glidewire and Progreat are registered trademarks of Terumo Interventional Systems.

Multiple Sizes for a Variety of Clinical Practice Situations

New Tip Shapes and Lengths Fathom™ -16 Steerable Guidewires

UPN	Order Number	Total Length (cm)	Nitinol Tip Length (cm)	Distal Floppy Tip Length (cm)	Proximal/Distal O.D. (inches)	Tip Shape
M001509120	50-912	180	25	10	0.016	Angled
M001509200	50-920	200	25	10	0.016	Straight
M001509210	50-921	200	25	10	0.016	Angled
M001509300	50-930	215	25	10	0.016	Straight
M001509310	50-931	215	25	10	0.016	Angled

Fathom™ -16 Steerable Guidewires

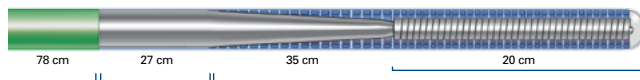
UPN	Order Number	Total Length (cm)	Nitinol Tip Length (cm)	Distal Floppy Tip Length (cm)	Proximal/Distal O.D. (inches)	Tip Shape
M001509000	50-900	140	25	10	0.016	Straight
M001509010	50-901	140	35	20	0.016	Straight
M001509100	50-910	180	25	10	0.016	Straight
M001509110	50-911	180	35	20	0.016	Straight

Fathom -14 Steerable Guidewires

UPN	Order Number	Total Length (cm)	Nitinol Tip Length (cm)	Distal Floppy Tip Length (cm)	Proximal/Distal O.D. (inches)	Tip Shape
M001508100	50-810	200	35	10	0.014	Straight
M001508110	50-811	200	35	10	0.014	Angled
M001508140	50-814	300	35	10	0.014	Straight
M001508150	50-815	300	35	10	0.014	Angled



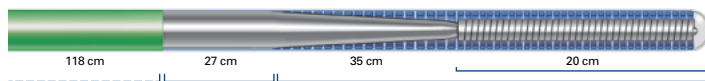
Total Length 140 cm
Outer Diameter 0.016"



Total Length 140 cm
Outer Diameter 0.016"



Total Length 180 cm
Outer Diameter 0.016"



Total Length 180 cm
Outer Diameter 0.016"



Total Length 200 cm
Outer Diameter 0.014"



Total Length 300 cm
Outer Diameter 0.014"

FATHOM-14 STEERABLE GUIDEWIRE

CAUTION: Federal law (USA) restricts this device to sale by or on the order of a physician. Rx only. Prior to use, please see the complete "Directions for Use" for more information on Indications, Contraindications, Warnings, Precautions, Adverse Events, and Operator's Instructions.

INTENDED USE/INDICATIONS FOR USE: The FATHOM -14 Steerable Guidewire is intended for general intravascular use in the peripheral vasculature. It can be used to selectively introduce and position catheters and other interventional devices within the peripheral vasculature. This device should be used only by physicians trained in percutaneous, intravascular techniques and procedures. **CONTRAINDICATIONS:** None known. **WARNINGS:** The FATHOM Steerable Guidewire is not intended for use in the coronary vasculature or the neuro vasculature. **ADVERSE EVENTS:** Complications attributed to endovascular procedures are the following: • Vessel trauma • Vessel damage • Embolism (catheter/device, air bubble, plaque, thrombus, air embolism, thromboembolism) • Pseudoaneurysm • Seizure/stroke • Vessel dissection • Hematoma at the puncture site • Nerve injury • Infection • Perforation of the vessel • Vessel spasm • Hemorrhage • Vascular thrombosis • Vessel occlusion • Death • Bleeding • Failed treatment • Inability to position guidewire • Damage to the catheter

FATHOM-16 STEERABLE GUIDEWIRE

CAUTION: Federal law (USA) restricts this device to sale by or on the order of a physician. Rx only. Prior to use, please see the complete "Directions for Use" for more information on Indications, Contraindications, Warnings, Precautions, Adverse Events, and Operator's Instructions.

INTENDED USE/INDICATIONS FOR USE: The FATHOM -16 Steerable Guidewire is intended for general intravascular use in the peripheral vasculature. It can be used to selectively introduce and position catheters and other interventional devices within the peripheral vasculature. This device should be used only by physicians trained in percutaneous, intravascular techniques and procedures. **CONTRAINDICATIONS:** None known. **WARNINGS:** The FATHOM Steerable Guidewire is not intended for use in the coronary vasculature or the neuro vasculature. **ADVERSE EVENTS:** Complications attributed to endovascular procedures are the following: • Vessel trauma • Vessel damage • Embolism (catheter/device, air bubble, plaque, thrombus, air embolism, thromboembolism) • Pseudoaneurysm • Seizure/stroke • Vessel dissection • Hematoma at the puncture site • Nerve injury • Infection • Perforation of the vessel • Vessel spasm • Hemorrhage • Vascular thrombosis • Vessel occlusion • Death • Bleeding • Failed treatment • Inability to position guidewire • Damage to the catheter

Fathom is a registered or unregistered trademark of Boston Scientific Corporation or its affiliates.

Boston Scientific
Advancing science for life™

Peripheral Interventions
300 Boston Scientific Way
Marlborough, MA 01752-1234
www.bostonscientific.com

To order product or for more information
contact customer service at 1.888.272.1001.

© 2017 Boston Scientific Corporation
or its affiliates. All rights reserved.

PI-319206-AB APR2017