



PERIPHERAL INTERVENTIONS SERVICES

Capital Equipment (CE)
Service Agreements

Our support doesn't end after
purchase – It's just beginning.



TABLE OF CONTENTS



OVERVIEW

Capital Equipment Service **Model Types**

Capital Equipment Service **Contract Offerings**

Capital Equipment Service Agreements **Models and Contracts**

Capital Equipment Service **Agreements Benefits**

EQUIPMENT

Arterial

Peripheral Atherectomy

- Jetstream™

Clot Management and Visualisation

Peripheral Thrombectomy

- AngioJet™

Acoustic Pulse Thrombolysis

- EKOS PT3B™
- EKOS CU4.0™

Intravascular Ultrasound (IVUS)

- AVVIGO™ II

Interventional Oncology (IO)

Cryoablation (Cryo)

- VISUAL ICE™
- VISUAL ICE™ MRI
- ICEFX™

Radiofrequency Ablation (RFA)

- RF3000™

Capital Equipment Service
Model Types

Capital Equipment Service
Contract Offerings

Capital Equipment Agreements
Models and Contracts

Capital Equipment Service
Agreements Benefits

EQUIPMENT

Arterial
Peripheral Atherectomy
• Jetstream™

Clot Management and Visualisation
Peripheral Thrombectomy
• AngioJet™

Acoustic Pulse Thrombolysis
• EKOS PT3B™
• EKOS CU4.0™

Intravascular Ultrasound (IVUS)
• AVVIGO™ II

Interventional Oncology (IO)
Cryoablation (Cryo)
• VISUAL ICE™
• VISUAL ICE™ MRI
• ICEFX™

Radiofrequency Ablation (RFA)
• RF3000™



Capital Equipment Service

Model



Field Service Model

- Technical Phone Support
- Field Service Support
- Repair and Preventative Maintenance
- Installation by Field Service Engineer



Exchange | Swap Model

- Technical Phone Support
- Exchange defective unit for another unit

Capital Equipment Service
Model Types

Capital Equipment Service
Contract Offerings

Capital Equipment Agreements
Models and Contracts

Capital Equipment Service
Agreements Benefits

EQUIPMENT

Arterial
Peripheral Atherectomy
• Jetstream™

Clot Management and Visualisation
Peripheral Thrombectomy
• AngioJet™

Acoustic Pulse Thrombolysis
• EKOS PT3B™
• EKOS CU4.0™

Intravascular Ultrasound (IVUS)
• AVVIGO™ II

Interventional Oncology (IO)
Cryoablation (Cryo)
• VISUAL ICE™
• VISUAL ICE™ MRI
• ICEFX™

Radiofrequency Ablation (RFA)
• RF3000™



Capital Equipment Service

Model Types | Per Product

CE	Field Service Model	Exchange Swap Model
Jetstream		•
AngioJet	•	
EKOS PT3B		•
EKOS CU4.0		•
AVVIGO II	•	
VISUAL ICE	•	
VISUAL ICE MRI	•	
ICEFX	•	
RF3000		•

OVERVIEW

Capital Equipment Service
Model Types

Capital Equipment Service
Contract Offerings

Capital Equipment Agreements
Models and Contracts

Capital Equipment Service
Agreements Benefits

EQUIPMENT

Arterial

Peripheral Atherectomy
• Jetstream™

Clot Management and Visualisation

Peripheral Thrombectomy
• AngioJet™

Acoustic Pulse Thrombolysis
• EKOS PT3B™
• EKOS CU4.0™

Intravascular Ultrasound (IVUS)
• AVVIGO™ II

Interventional Oncology (IO)

Cryoablation (Cryo)
• VISUAL ICE™
• VISUAL ICE™ MRI
• ICEFX™

Radiofrequency Ablation (RFA)
• RF3000™

Capital Equipment Service

Contract Offerings

Ever CARE

EverCare* does include all the benefits of a Totalcare contract with 1 hardware upgrade.

Total CARE

TotalCare* is a comprehensive plan that combines EssentialCare service with additional benefits like a fast onsite commitment.

Depending on the product, premium features such as loaners may be available to minimise downtime.

Essential CARE

With **EssentialCare***, you receive coverage on all parts labor, travel, and preventative maintenance visits on relevant products.

If repairs cannot be made, we will send you a comparable replacement unit.

PM CARE

With our entry level service plan, **Preventative Maintenance (PM) Care***, you'll receive one preventative maintenance visit per year on relevant products. It's a cost effective plan.

* Availability may vary depending on product lines.

OVERVIEW

OVERVIEW

Capital Equipment Service
Model Types

Capital Equipment Service
Contract Offerings

Capital Equipment Agreements
Models and Contracts

Capital Equipment Service
Agreements Benefits

EQUIPMENT

Arterial
Peripheral Atherectomy
• Jetstream™

Clot Management and Visualisation
Peripheral Thrombectomy
• AngioJet™

Acoustic Pulse Thrombolysis
• EKOS PT3B™
• EKOS CU4.0™

Intravascular Ultrasound (IVUS)
• AVVIGO™ II

Interventional Oncology (IO)
Cryoablation (Cryo)
• VISUAL ICE™
• VISUAL ICE™ MRI
• ICEFX™

Radiofrequency Ablation (RFA)
• RF3000™



Capital Equipment Agreements Models and Contracts

Capital Equipment/ Model		EverCare	TotalCare	EssentialCare	PMCare
	Jetstream		●	●	
	AngioJet	●	●		●
	EKOS PT3B*	●	●	●	
	EKOS CU4.0		●	●	
	AVVIGO II		●	●	
	VISUAL ICE		●	●	●
	VISUAL ICE MRI		●	●	●
	ICEFX		●	●	●
	RF3000			●	

Swap Model

Field Service Model

OVERVIEW

OVERVIEW

Capital Equipment Service
Model Types

Capital Equipment Service
Contract Offerings

Capital Equipment Agreements
Models and Contracts

Capital Equipment Service
Agreements Benefits

EQUIPMENT

Arterial

Peripheral Atherectomy
• Jetstream™

Clot Management and Visualisation

Peripheral Thrombectomy
• AngioJet™

Acoustic Pulse Thrombolysis
• EKOS PT3B™
• EKOS CU4.0™

Intravascular Ultrasound (IVUS)
• AVVIGO™ II

Interventional Oncology (IO)

Cryoablation (Cryo)
• VISUAL ICE™
• VISUAL ICE™ MRI
• ICEFX™

Radiofrequency Ablation (RFA)
• RF3000™

Capital Equipment Service

Benefits



PEACE OF MIND – Dedicate yourself to treating your patients while we take care of your device. (System mechanical and software updates)



24/7 TECHNICAL SUPPORT – Guaranteed support from experienced Technical Assistance Center and Field Service Engineers. (24/7 technical phone support during patient procedure)



PRIORITY SERVICE - FASTER COMMUNICATION compared to customers that do not have a contract. (Access to technicians via phone)



EFFICIENT PLANNING - NO INTERRUPTION IN SERVICE, keeping your most critical systems protected and allows for in-time planning to avoid system downtime



QUALITY CONTROL – Extend the service life of your equipment and ensure a clean everyday working life maximising system reliability



COST SAVING – Benefit from a service package that lowers your costs and enables you to plan precisely. (100% coverage including a replacement unit for any defective unit, shipping, travel/labor, spare parts)



OVERVIEW

OVERVIEW

Capital Equipment Service
Model Types

Capital Equipment Service
Contract Offerings

Capital Equipment Agreements
Models and Contracts

Capital Equipment Service
Agreements Benefits

EQUIPMENT

Arterial

Peripheral Atherectomy
• Jetstream™

Clot Management and Visualisation

Peripheral Thrombectomy
• AngioJet™

Acoustic Pulse Thrombolysis
• EKOS PT3B™
• EKOS CU4.0™

Intravascular Ultrasound (IVUS)
• AVVIGO™ II

Interventional Oncology (IO)

Cryoablation (Cryo)
• VISUAL ICE™
• VISUAL ICE™ MRI
• ICEFX™

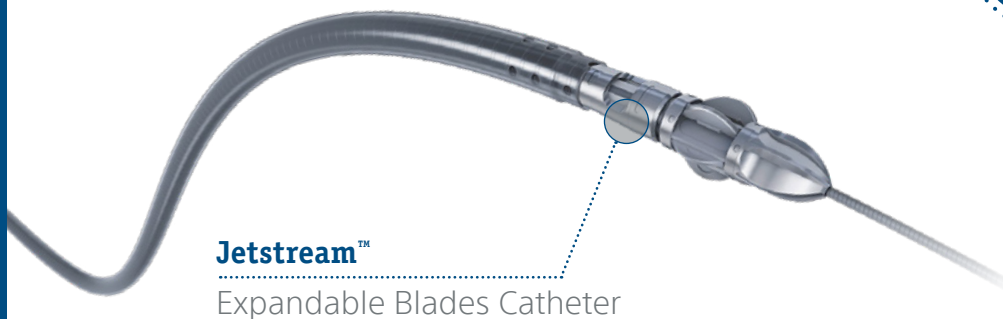
Radiofrequency Ablation (RFA)
• RF3000™

Peripheral Atherectomy

Jetstream™

The Jetstream system is an innovative peripheral revascularization platform designed to restore flow through the many types of lesion morphologies encountered in peripheral arterial disease (PAD). The system consists of a compact console power source that mounts to a standard I.V. stand and a single-use catheter with control pod.

- **No Preventative Maintenance required**
- EST/STK (Electrical Safety Tests)*
Service is performed at customer site



Jetstream™

Expandable Blades Catheter

1 2

Jetstream™

Console



LEARN
MORE

* EST/STK is only mandatory in Austria, Germany and Switzerland.

EQUIPMENT

OVERVIEW

Capital Equipment Service
Model Types

Capital Equipment Service
Contract Offerings

Capital Equipment Agreements
Models and Contracts

Capital Equipment Service
Agreements Benefits

EQUIPMENT

Arterial
Peripheral Atherectomy
• Jetstream™

Clot Management and Visualisation
Peripheral Thrombectomy
• AngioJet™

Acoustic Pulse Thrombolysis
• EKOS PT3B™
• EKOS CU4.0™

Intravascular Ultrasound (IVUS)
• AVVIGO™ II

Interventional Oncology (IO)
Cryoablation (Cryo)
• VISUAL ICE™
• VISUAL ICE™ MRI
• ICEFX™

Radiofrequency Ablation (RFA)
• RF3000™



Capital Equipment Service

Jetstream™ | Service Contract Offerings

Term Coverage	TotalCare	EssentialCare
	1 – 4 Years	1 – 4 Years
Access to technicians via phone	●	●
24/7 technical phone support during patient procedure	●	●
Annual EST/STK*	●	
100% coverage on replacement console	●	●
Standard next day shipping**	●	●

Exchange | Swap Model

- Technical Phone Support
- Exchange defective unit for another unit

* Electrical Safety Tests.
** Usually delivered in 48 hours from the call received into Technical Assistant Center.
Delivery time may vary depending on the country of destination

OVERVIEW

Capital Equipment Service
Model Types

Capital Equipment Service
Contract Offerings

Capital Equipment Agreements
Models and Contracts

Capital Equipment Service
Agreements Benefits

EQUIPMENT

Arterial

Peripheral Atherectomy
• Jetstream™

Clot Management and Visualisation

Peripheral Thrombectomy
• AngioJet™

Acoustic Pulse Thrombolysis

• EKOS PT3B™
• EKOS CU4.0™

Intravascular Ultrasound (IVUS)

• AVVIGO™ II

Interventional Oncology (IO)

Cryoablation (Cryo)

• VISUAL ICE™
• VISUAL ICE™ MRI
• ICEFX™

Radiofrequency Ablation (RFA)

• RF3000™

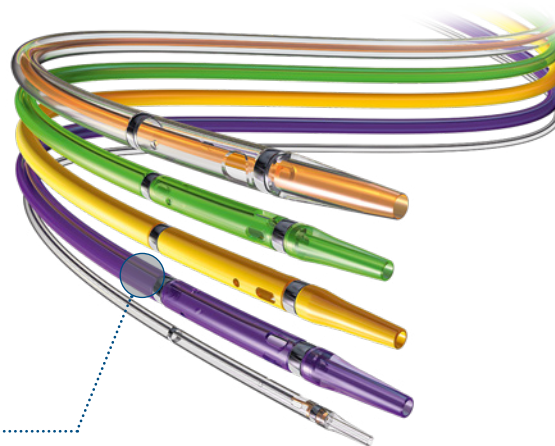
Peripheral Thrombectomy

AngioJet™

The AngioJet Ultra Thrombectomy System is a pharmacomechanical peripheral thrombectomy device with active aspiration and Power Pulse™ lytic delivery designed to treat the widest range of thrombosed vessels, rapidly restoring blood flow.

- **No Preventative Maintenance required***
- Service is performed at customer site

LEARN
MORE



AngioJet™

Peripheral Catheters

AngioJet™

Ultra System

LEARN
MORE



*BSC strongly advises a PM every 12 months (included in TotalCare and PMCare).

EQUIPMENT

OVERVIEW

Capital Equipment Service
Model Types

Capital Equipment Service
Contract Offerings

Capital Equipment Agreements
Models and Contracts

Capital Equipment Service
Agreements Benefits

EQUIPMENT

Arterial
Peripheral Atherectomy
• Jetstream™

Clot Management and Visualisation
Peripheral Thrombectomy
• AngioJet™

Acoustic Pulse Thrombolysis
• EKOS PT3B™
• EKOS CU4.0™

Intravascular Ultrasound (IVUS)
• AVVIGO™ II

Interventional Oncology (IO)
Cryoablation (Cryo)
• VISUAL ICE™
• VISUAL ICE™ MRI
• ICEFX™


Radiofrequency Ablation (RFA)
• RF3000™



Peripheral Thrombectomy
AngioJet™ | Service Contract Offerings

Term Coverage	EverCare	TotalCare	PMCare
	3 Years	1 – 4 Years	1 Year
Access to technicians via phone	●	●	●
24/7 technical phone support during patient procedure	●	●	●
Annual Preventative Maintenance (Incl. EST/STK) ¹	●	●	●
100% coverage for defective unit on parts/travel/labor charges	●	●	
Free loaner during downtime	●	●	
Hardware upgrade	●		

Field Service Model



- Technical Phone Support
- Field Service Support
- Repair and PM²
- Installation by FSE³

1. Electrical Safety Tests. 2. Preventative Maintenance. 3. Field Service Engineer.

OVERVIEW

Capital Equipment Service
Model Types

Capital Equipment Service
Contract Offerings

Capital Equipment Agreements
Models and Contracts

Capital Equipment Service
Agreements Benefits

EQUIPMENT

Arterial

Peripheral Atherectomy
• Jetstream™

Clot Management and Visualisation

Peripheral Thrombectomy
• AngioJet™

Acoustic Pulse Thrombolysis
• EKOS PT3B™
• EKOS CU4.0™

Intravascular Ultrasound (IVUS)
• AVVIGO™ II

Interventional Oncology (IO)

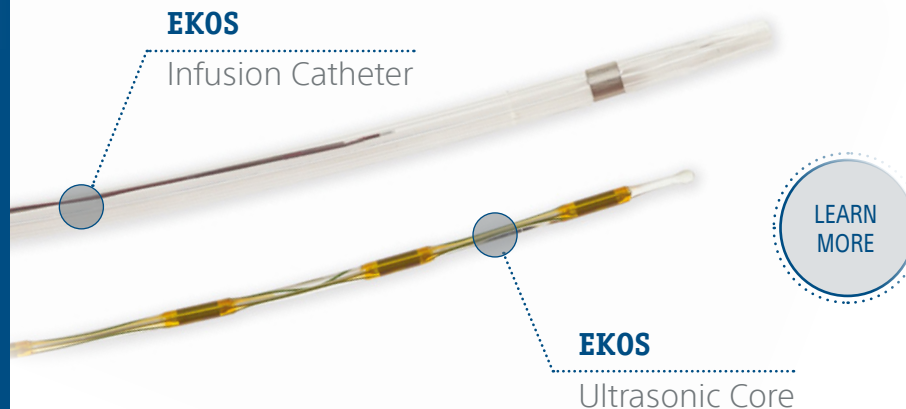
Cryoablation (Cryo)
• VISUAL ICE™
• VISUAL ICE™ MRI
• ICEFX™

Radiofrequency Ablation (RFA)
• RF3000™

Acoustic Pulse Thrombolysis EKOS PT3B™

The EKOS Control Unit PT3B with Acoustic Pulse Thrombolysis treatment is very unique, as it uses ultrasonic waves in combination with clot-dissolving drugs in the treatment of Pulmonary Embolism (PE). The system uses a sophisticated catheter and an ultrasonic core to effectively target an entire clot.

- **No Preventative Maintenance required**
- EST/STK (Electrical Safety Tests)*
Service is performed at customer site



EKOS

Control Unit PT3B



EKOS

Connector Interface
Cable (CIC)

* EST/STK is only mandatory in Austria, Germany and Switzerland.

EQUIPMENT

OVERVIEW

Capital Equipment Service
Model Types

Capital Equipment Service
Contract Offerings

Capital Equipment Agreements
Models and Contracts

Capital Equipment Service
Agreements Benefits

EQUIPMENT

Arterial
Peripheral Atherectomy
• Jetstream™

Clot Management and Visualisation
Peripheral Thrombectomy
• AngioJet™

Acoustic Pulse Thrombolysis
• EKOS PT3B™
• EKOS CU4.0™

Intravascular Ultrasound (IVUS)
• AVVIGO™ II

Interventional Oncology (IO)
Cryoablation (Cryo)
• VISUAL ICE™
• VISUAL ICE™ MRI
• ICEFX™

Radiofrequency Ablation (RFA)
• RF3000™



Acoustic Pulse Thrombolysis 1 2
EKOS PT3B™ | Service Contract Offerings

Term Coverage	EverCare	TotalCare	EssentialCare
	3 Years	1 – 4 Years	1 – 4 Years
Access to technicians via phone	●	●	●
24/7 technical phone support during patient procedure	●	●	●
100% coverage for defective unit with replacement. Replacement unit remains at customer (SWAP)	●	●	●
Annual EST/STK*	●	●	
1 hardware upgrade to EKOS CU4.0	●		

Exchange | Swap Model

- Technical Phone Support
- Exchange defective unit for another unit**

* Electrical Safety Tests.
** Please notice the EKOS PT3B Systems' End-Of-Service (EOL):
• For Systems installed before August 2015, EOS will be December 2022;
• For Systems installed on August 2015 or later, EOS will be reached within 5 years from initial installation date or latest December 2025, whichever comes first.

OVERVIEW

Capital Equipment Service
Model Types

Capital Equipment Service
Contract Offerings

Capital Equipment Agreements
Models and Contracts

Capital Equipment Service
Agreements Benefits

EQUIPMENT

Arterial

Peripheral Atherectomy
• Jetstream™

Clot Management and Visualisation

Peripheral Thrombectomy
• AngioJet™

Acoustic Pulse Thrombolysis
• EKOS PT3B™
• EKOS CU4.0™

Intravascular Ultrasound (IVUS)
• AVVIGO™ II

Interventional Oncology (IO)

Cryoablation (Cryo)
• VISUAL ICE™
• VISUAL ICE™ MRI
• ICEFX™

Radiofrequency Ablation (RFA)
• RF3000™

Acoustic Pulse Thrombolysis EKOS CU4.0™

EKOS Control Unit 4.0 makes it easier than ever to provide EKOS therapy – powering two devices to support bilateral Pulmonary Embolism (PE) and Deep Vein Thrombosis (DVT) and peripheral arterial occlusion (PAO) cases, an internal battery to support easier patient transport, and a simple, clear user interface.

- **Preventative Maintenance (PM) required every 24 months** (*exchange of battery*)
- PM and EST/STK (Electrical Safety Tests)*
Services are performed at customer site

EKOS

Control Unit CU4.0



EKOS

Connector Interface
Cable (CIC)

EKOS

Infusion Catheter



EKOS

Ultrasonic Core

* EST/STK is only mandatory in Austria, Germany and Switzerland.

EQUIPMENT

OVERVIEW

Capital Equipment Service
Model Types

Capital Equipment Service
Contract Offerings

Capital Equipment Agreements
Models and Contracts

Capital Equipment Service
Agreements Benefits

EQUIPMENT

Arterial
Peripheral Atherectomy
• Jetstream™

Clot Management and Visualisation
Peripheral Thrombectomy
• AngioJet™

Acoustic Pulse Thrombolysis
• EKOS PT3B™
• EKOS CU4.0™

Intravascular Ultrasound (IVUS)
• AVVIGO™ II

Interventional Oncology (IO)
Cryoablation (Cryo)
• VISUAL ICE™
• VISUAL ICE™ MRI
• ICEFX™

Radiofrequency Ablation (RFA)
• RF3000™



Acoustic Pulse Thrombolysis 1 2
EKOS CU4.0™ | Service Contract Offerings

Term Coverage	TotalCare	EssentialCare
	1 – 4 Years	1 – 4 Years
Access to technicians via phone	●	●
24/7 technical phone support during patient procedure	●	●
Standard next day shipping**	●	●
100% coverage for defective unit with replacement. Replacement unit remains at customer (SWAP)	●	●
Software Updates	●	●
Annual EST/STK*	●	
1 Preventative Maintenance per every 24 months	●	●

Exchange | Swap Model

- Technical Phone Support
- Exchange defective unit for another unit**

*Electrical Safety Tests.
** Usually delivered in 48 hours from the call received into Technical Assistant Center.
Delivery time may vary depending on the country of destination

OVERVIEW

Capital Equipment Service
Model Types

Capital Equipment Service
Contract Offerings

Capital Equipment Agreements
Models and Contracts

Capital Equipment Service
Agreements Benefits

EQUIPMENT

Arterial

Peripheral Atherectomy
• Jetstream™

Clot Management and Visualisation

Peripheral Thrombectomy
• AngioJet™

Acoustic Pulse Thrombolysis
• EKOS PT3B™
• EKOS CU4.0™

Intravascular Ultrasound (IVUS)
• AVVIGO™ II

Interventional Oncology (IO)

Cryoablation (Cryo)
• VISUAL ICE™
• VISUAL ICE™ MRI
• ICEFX™

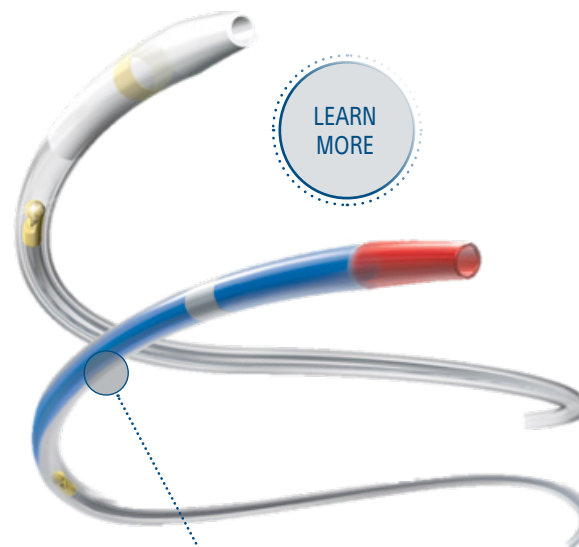
Radiofrequency Ablation (RFA)
• RF3000™



Intravascular Ultrasound (IVUS) AVVIGO™ Guidance system II

The **AVVIGO Guidance System II** offers high-definition IVUS images using the OptiCross™ 18 and OptiCross™ 35 Peripheral Imaging Catheters in a flexible platform.

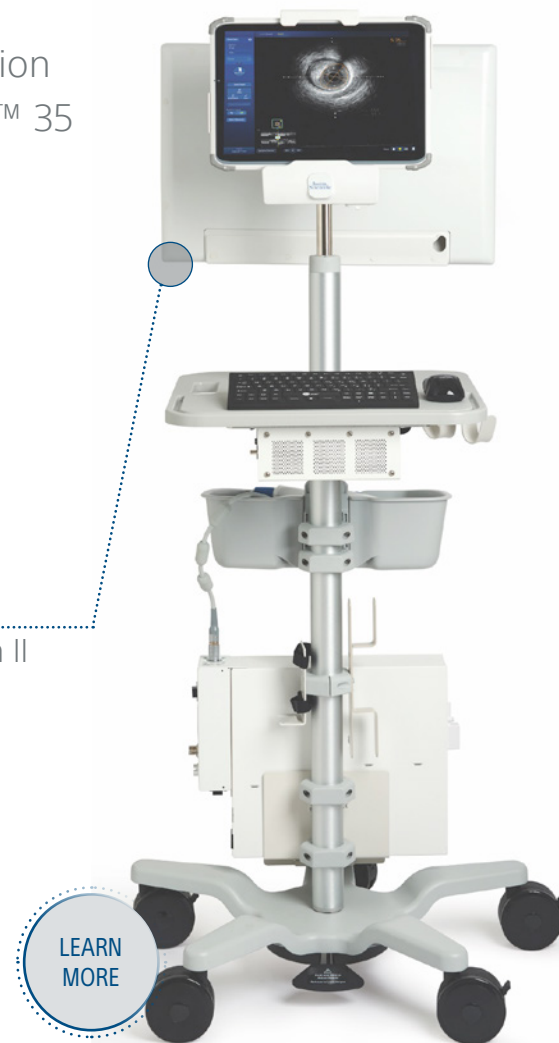
- **No Preventative Maintenance required***
- Service is performed at customer site



OPTICROSS 18 & 35

Peripheral Imaging Catheters

AVVIGO
Guidance System II



* BSC strongly advises a PM every 12 months (included in TotalCare and PMCare).

EQUIPMENT

OVERVIEW

Capital Equipment Service
Model Types

Capital Equipment Service
Contract Offerings

Capital Equipment Agreements
Models and Contracts

Capital Equipment Service
Agreements Benefits

EQUIPMENT

Arterial

Peripheral Atherectomy
• Jetstream™

Clot Management and Visualisation

Peripheral Thrombectomy
• AngioJet™

Acoustic Pulse Thrombolysis
• EKOS PT3B™
• EKOS CU4.0™

Intravascular Ultrasound (IVUS)
• AVVIGO™ II

Interventional Oncology (IO)

Cryoablation (Cryo)
• VISUAL ICE™
• VISUAL ICE™ MRI
• ICEFX™

Radiofrequency Ablation (RFA)
• RF3000™



Intravascular Ultrasound (IVUS) AVVIGO™ Guidance system II Service Product Offering

Term Coverage	TotalCare	EssentialCare
	1 – 4 Years	1 – 4 Years
Access to technicians via phone	●	●
24/7 technical phone support during patient procedure	●	●
Standard next day shipping*	●	●
100% coverage for defective units on parts, travel/ labor charges	●	●
Software updates	●	●
Annual Preventative Maintenance (incl EST/STK) ¹	●	

Field Service Model

	• Technical Phone Support	• Repair and PM ²
	• Field Service Support	• Installation by FSE ³

1 Electrical Safety Tests. 2 Preventative Maintenance. 3 Field Service Engineer.

*Usually delivered in 48 hours from the call received into Technical Assistant Center.
Delivery time may vary depending on the country of destination

EQUIPMENT

OVERVIEW

Capital Equipment Service
Model Types

Capital Equipment Service
Contract Offerings

Capital Equipment Agreements
Models and Contracts

Capital Equipment Service
Agreements Benefits

EQUIPMENT

Arterial

Peripheral Atherectomy
• Jetstream™

Clot Management and Visualisation

Peripheral Thrombectomy
• AngioJet™

Acoustic Pulse Thrombolysis
• EKOS PT3B™
• EKOS CU4.0™

Intravascular Ultrasound (IVUS)
• AVVIGO™ II

Interventional Oncology (IO)

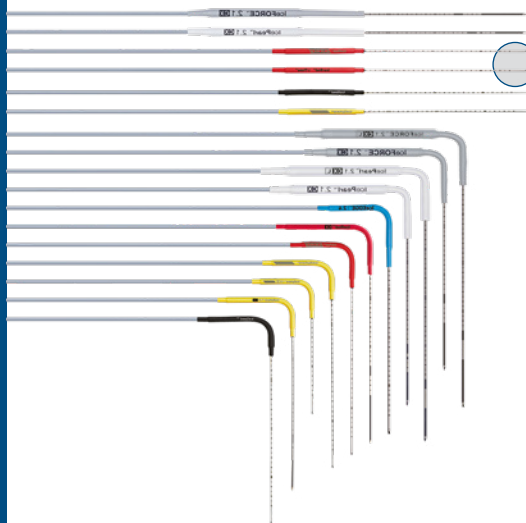
Cryoablation (Cryo)
• VISUAL ICE™
• VISUAL ICE™ MRI
• ICEFX™

Radiofrequency Ablation (RFA)
• RF3000™

Cryoablation VISUAL ICE™

The Visual ICE Cryoablation system is intended for the cryoablative destruction of tissue during minimally invasive percutaneous procedures. It provides superior freezing performance, an intuitive user interface and innovative platform that incorporates helium-free options for thawing and cautery for track ablation.

- **Preventative Maintenance required every 24 months**
- Service is performed at customer site



LEARN
MORE

1

2

VISUAL ICE™
System



LEARN
MORE

VISUAL ICE™
Cryoablation Needles

EQUIPMENT



OVERVIEW

Capital Equipment Service
Model Types

Capital Equipment Service
Contract Offerings

Capital Equipment Agreements
Models and Contracts

Capital Equipment Service
Agreements Benefits

EQUIPMENT

Arterial
Peripheral Atherectomy
• Jetstream™

Clot Management and Visualisation
Peripheral Thrombectomy
• AngioJet™

Acoustic Pulse Thrombolysis
• EKOS PT3B™
• EKOS CU4.0™

Intravascular Ultrasound (IVUS)
• AVVIGO™ II

Interventional Oncology (IO)
Cryoablation (Cryo)
• VISUAL ICE™
• VISUAL ICE™ MRI
• ICEFX™

Radiofrequency Ablation (RFA)
• RF3000™



Cryoablation

12

VISUAL ICE™ | Service Contract Offerings

Term Coverage	TotalCare	EssentialCare	PMCare
	1 – 4 Years	1 – 4 Years	1 – 4 Years
Access to technicians via phone	●	●	●
24/7 technical phone support	●	●	●
100% Coverage on Preventative Maintenance (incl PM kit) every 24 months	●	●	●
System mechanical and software updates	●	●	●
Technician support for Visual ICE annual routine inspection (optional)	●	●	●
100% coverage on shipping, travel/labor, parts	●	●	
Priority designation in service repair queue	●	●	
Annual EST/STK¹ every 12 months	●		●

Field Service Model

- Technical Phone Support
- Field Service Support

- Repair and PM²
- Installation by FSE³

1. Electrical Safety Tests. 2. Preventative Maintenance. 3. Field Service Engineer.

OVERVIEW

Capital Equipment Service
Model Types

Capital Equipment Service
Contract Offerings

Capital Equipment Agreements
Models and Contracts

Capital Equipment Service
Agreements Benefits

EQUIPMENT

Arterial

Peripheral Atherectomy
• Jetstream™

Clot Management and Visualisation

Peripheral Thrombectomy
• AngioJet™

Acoustic Pulse Thrombolysis
• EKOS PT3B™
• EKOS CU4.0™

Intravascular Ultrasound (IVUS)
• AVVIGO™ II

Interventional Oncology (IO)

Cryoablation (Cryo)
• VISUAL ICE™
• VISUAL ICE™ MRI
• ICEFX™

Radiofrequency Ablation (RFA)
• RF3000™



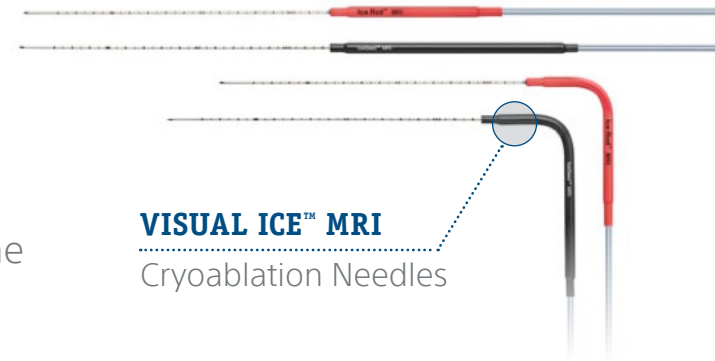
1

2

Cryoablation VISUAL ICE™ MRI

Specialised for the MR room, the Visual ICE MRI Cryoablation System is the only ablation system that leverages the unique advantages of cryoablation zone visibility with the exquisite image resolution of MR.

- **Preventative Maintenance required every 24 months**
- Service is performed at customer site



VISUAL ICE™ MRI
Cryoablation Needles

LEARN
MORE

VISUAL ICE™ MRI
System

EQUIPMENT

OVERVIEW

Capital Equipment Service
Model Types

Capital Equipment Service
Contract Offerings

Capital Equipment Agreements
Models and Contracts

Capital Equipment Service
Agreements Benefits

EQUIPMENT

Arterial
Peripheral Atherectomy
• Jetstream™

Clot Management and Visualisation
Peripheral Thrombectomy
• AngioJet™

Acoustic Pulse Thrombolysis
• EKOS PT3B™
• EKOS CU4.0™

Intravascular Ultrasound (IVUS)
• AVVIGO™ II

Interventional Oncology (IO)
Cryoablation (Cryo)
• VISUAL ICE™
• VISUAL ICE™ MRI
• ICEFX™

Radiofrequency Ablation (RFA)
• RF3000™



Cryoablation

12

VISUAL ICE™ MRI | Service Contract Offerings

Term Coverage	TotalCare	EssentialCare	PMCare
	1 – 4 Years	1 – 4 Years	1 – 4 Years
Access to technicians via phone	●	●	●
24/7 technical phone support	●	●	●
100% Coverage on Preventative Maintenance (incl PM kit) every 24 months	●	●	●
System mechanical and software updates	●	●	●
Technician support for Visual ICE MRI annual routine inspection (optional)	●	●	●
100% coverage on shipping, travel/labor, parts	●	●	
Priority designation in service repair queue	●	●	
Annual EST/STK¹ every 12 months	●		●

Field Service Model

- Technical Phone Support
- Field Service Support

- Repair and PM²
- Installation by FSE³

1. Electrical Safety Tests. 2. Preventative Maintenance. 3. Field Service Engineer.

OVERVIEW

Capital Equipment Service
Model Types

Capital Equipment Service
Contract Offerings

Capital Equipment Agreements
Models and Contracts

Capital Equipment Service
Agreements Benefits

EQUIPMENT

Arterial

Peripheral Atherectomy
• Jetstream™

Clot Management and Visualisation

Peripheral Thrombectomy
• AngioJet™

Acoustic Pulse Thrombolysis
• EKOS PT3B™
• EKOS CU4.0™

Intravascular Ultrasound (IVUS)
• AVVIGO™ II

Interventional Oncology (IO)

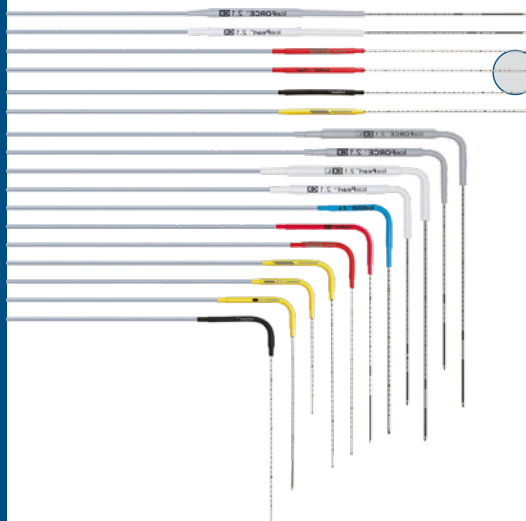
Cryoablation (Cryo)
• VISUAL ICE™
• VISUAL ICE™ MRI
• ICEFX™

Radiofrequency Ablation (RFA)
• RF3000™

Cryoablation ICEFX™

The ICEfx Cryoablation System is the next generation of ablation systems with a compact design and interface that offers predictable, reliable cryoablation performance and seamless therapy delivery with the exceptional ease of technical operation.

- **Preventative Maintenance required every 24 months**
- Service is performed at customer site



LEARN
MORE

ICEFX™

Cryoablation Needles



ICEFX™
System

LEARN
MORE

EQUIPMENT



OVERVIEW

Capital Equipment Service
Model Types

Capital Equipment Service
Contract Offerings

Capital Equipment Agreements
Models and Contracts

Capital Equipment Service
Agreements Benefits

EQUIPMENT

Arterial
Peripheral Atherectomy
• Jetstream™

Clot Management and Visualisation
Peripheral Thrombectomy
• AngioJet™

Acoustic Pulse Thrombolysis
• EKOS PT3B™
• EKOS CU4.0™

Intravascular Ultrasound (IVUS)
• AVVIGO™ II

Interventional Oncology (IO)
Cryoablation (Cryo)
• VISUAL ICE™
• VISUAL ICE™ MRI
• ICEFX™

Radiofrequency Ablation (RFA)
• RF3000™



Cryoablation

1

2

ICEFX™ | Service Contract Offerings

Term Coverage	TotalCare	EssentialCare	PMCare
	1 – 4 Years	1 – 4 Years	1 – 4 Years
Access to technicians via phone	●	●	●
24/7 technical phone support during patient procedure	●	●	●
100% Coverage on Preventative Maintenance (incl PM kit) every 24 months	●	●	●
System mechanical and software updates	●	●	●
Technician support for ICEFX annual routine inspection (optional)	●	●	●
100% coverage on shipping, travel/labor, parts	●	●	
Priority designation in service repair queue	●	●	
Annual EST/STK ¹ every 12 months	●		●

Field Service Model

- Technical Phone Support
- Field Service Support
- Repair and PM²
- Installation by FSE³

1. Electrical Safety Tests. 2. Preventative Maintenance. 3. Field Service Engineer.

OVERVIEW

Capital Equipment Service
Model Types

Capital Equipment Service
Contract Offerings

Capital Equipment Agreements
Models and Contracts

Capital Equipment Service
Agreements Benefits

EQUIPMENT

Arterial

Peripheral Atherectomy
• Jetstream™

Clot Management and Visualisation

Peripheral Thrombectomy
• AngioJet™

Acoustic Pulse Thrombolysis
• EKOS PT3B™
• EKOS CU4.0™

Intravascular Ultrasound (IVUS)
• AVVIGO™ II

Interventional Oncology (IO)

Cryoablation (Cryo)
• VISUAL ICE™
• VISUAL ICE™ MRI
• ICEFX™

Radiofrequency Ablation (RFA)
• RF3000™

Radiofrequency Ablation (RFA) RF3000™ Generator

RF3000 Radiofrequency Ablation Generator was designed for complete predictable thermal ablation:

- **200W capacity** promotes rapid, efficient ablation of large volumes of tissue
- **Easy-to-read**, back lit displays and audible signal are designed to allow constant assessment of procedure progress
- Because ablation algorithms and generator inputs are manual, there is **no need for generator software updates** if/when probe algorithms change
- **No Preventative Maintenance required**
- EST/STK (Electrical Safety Tests)*
Service is performed at customer site



RF3000™
Generator

LEARN
MORE

LeVeen™ CoAccess™
Needle Electrode

LEARN
MORE



Soloist™
Needle Electrode

* EST/STK is only mandatory in Austria, Germany and Switzerland.

EQUIPMENT



OVERVIEW

Capital Equipment Service
Model Types

Capital Equipment Service
Contract Offerings

Capital Equipment Agreements
Models and Contracts

Capital Equipment Service
Agreements Benefits

EQUIPMENT

Arterial
Peripheral Atherectomy
• Jetstream™

Clot Management and Visualisation
Peripheral Thrombectomy
• AngioJet™

Acoustic Pulse Thrombolysis
• EKOS PT3B™
• EKOS CU4.0™

Intravascular Ultrasound (IVUS)
• AVVIGO™ II

Interventional Oncology (IO)
Cryoablation (Cryo)
• VISUAL ICE™
• VISUAL ICE™ MRI
• ICEFX™

Radiofrequency Ablation (RFA)
• RF3000™



Radiofrequency Ablation (RFA)
RF3000™ Generator | Service Contract Offerings

Term Coverage	EssentialCare
	1 Year
Access to technicians via phone	•
24/7 technical phone support	•
100% coverage for defective unit with replacement. Replacement unit remains at customer (SWAP)	•
Standard next day shipping*	•

Exchange | Swap Model

	<ul style="list-style-type: none">• Technical Phone Support• Exchange defective unit for another unit**
--	--

*Usually delivered in 48 hours from the call received into Technical Assistant Center.
Delivery time may vary depending on the country of destination



**For more information,
Please contact your
Boston Scientific
Sales Representative**

All cited trademarks are the property of their respective owners. CAUTION: The law restricts these devices to sale by or on the order of a physician. Indications, contraindications, warnings, and instructions for use can be found in the product labelling supplied with each device or at www.IFU-BSCI.com. Products shown for INFORMATION purposes only and may not be approved or for sale in certain countries.

This material not intended for use in France.

PI-1001404-AC Designed in Germany by medicalvision.

**Boston
Scientific**
Advancing science for life™

www.bostonscientific.eu

© 2023 Boston Scientific Corporation
or its affiliates. All rights reserved.