

DISCOVER THE VALUE OF VERSATILITY

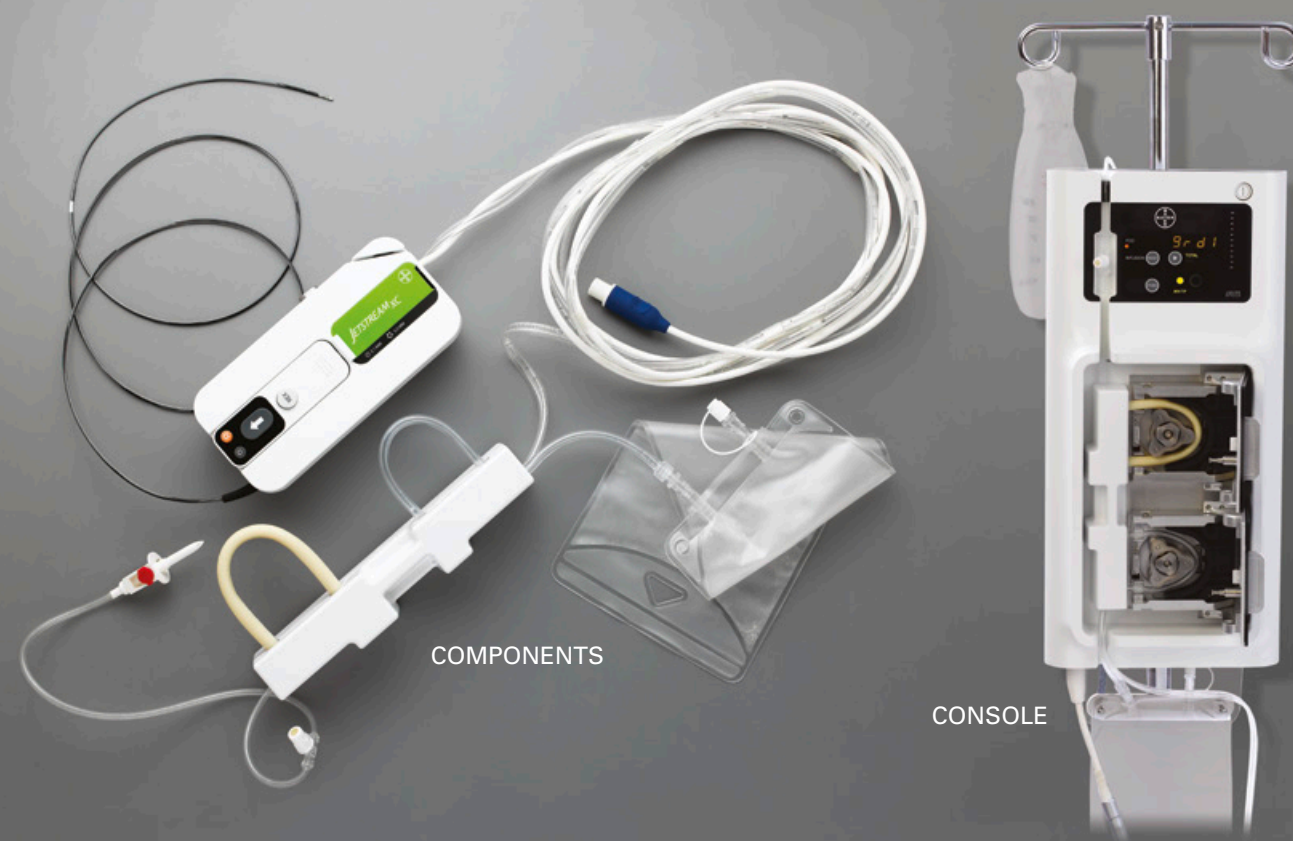
Versatility means not having to guess the morphology!

Peripheral arterial lesions can present with a range of morphologies from soft thrombus to plaque and difficult calcification – often in the same vessel. The Jetstream™ Atherectomy System is indicated for both thrombectomy and atherectomy and has demonstrated its ability to deliver luminal gain in soft, hard and calcified lesions.^{1,2}

Versatility means not having to switch in the middle of a procedure!

The Jetstream™ Atherectomy System offers the XC Catheter for above the knee and the SC Catheter for below the knee. In addition, the XC series has expandable blade technology that can deliver two lumen sizes with the same catheter.

FEATURE	Jetstream	Orbital	Directional	Laser	BENEFIT
Labeling Indication	Atherectomy Thrombectomy	✓ ✓	✗ ✗	✗ ✗	Complex lesions and total occlusion often contain mixed morphology lesions, requiring a device capable of managing it all.
Active Aspiration	✓				Aspiration of liberated debris may minimize the risk of distal embolization.
Front Cutting / Rotational Device	✓	✗		✗	Total occlusions are common in PAD, front cutting enables engagement of tightest lesions.
Concentric Lumens	✓	✗			Concentric lumens facilitate straight line laminar flow.
Differential Cutting	✓	✗			Differential cutting targets only the plaque, minimizing the risk of vessel damage.
Expandable Blade Technology	✓				Expandable blades deliver more versatility, facilitating treatment from SFA to TPT.
Lesion Type	Total Occlusions Thrombus Calcium Soft Plaque Fibrous Plaque	✓ ✓ ✓ ✓ ✓		✗ ✗ ✗ ✗ ✗	Peripheral arterial disease rarely manifests as a single lesion type. A mix of disease morphologies is common, driving the need for a single device capable of addressing them all.



ORDERING INFORMATION

Product Description	Catalog Number
Jetstream™ SC Atherectomy Catheter 1.85 mm	112262-003
Jetstream™ SC Atherectomy Catheter 1.6 mm	112260-003
Jetstream™ XC Atherectomy Catheter 2.4 mm / 3.4 mm	112266-003
Jetstream™ XC Atherectomy Catheter 2.1 mm / 3.0 mm	112264-003

¹ Zeller T et al. One-year outcome of percutaneous rotational atherectomy with aspiration in infrainguinal peripheral arterial occlusive disease: the multicenter pathway PVD trial. J Endovasc Ther. 2009 Dec;16(6):653-62.

² <http://www.eventscribe.com/2013/posters/issetio/SplitViewer.asp?PID=MTEwNTg2MjU2> "Jetstream Atherectomy System Can Remove Superficial Calcium in Severely Calcified Peripheral Arteries"

Indications, operating specifications and availability may vary by country. Check with local product representation and country-specific Information For Use for your country. This material is not approved for use or distribution in France.

All cited trademarks are the property of their respective owners. CAUTION: The law restricts devices to sale by or on the order of a physician. Indications, contraindications, warnings and instructions for use can be found in the product labeling supplied with each device. Information for the use only in countries with applicable health authority product registrations.

PI-317602-AA May 2015 Printed in Germany by medicalvision.

Boston Scientific
Advancing science for life™

www.bostonscientific.eu

© 2015 Boston Scientific Corporation or its affiliates. All rights reserved. DINPER4664EA

Boston Scientific
Advancing science for life™

JETSTREAM™ Atherectomy System

DELIVERING VERSATILITY TO RESTORE FLOW

RESTORE FLOW WITH THE MOST VERSATILE ATHERECTOMY SYSTEM AVAILABLE

Treat It All with One Device¹

From thrombus to difficult calcium, both above and below the knee.

Dual Indication

Both atherectomy and thrombectomy from the same catheter.

CTOs and Tight Stenoses

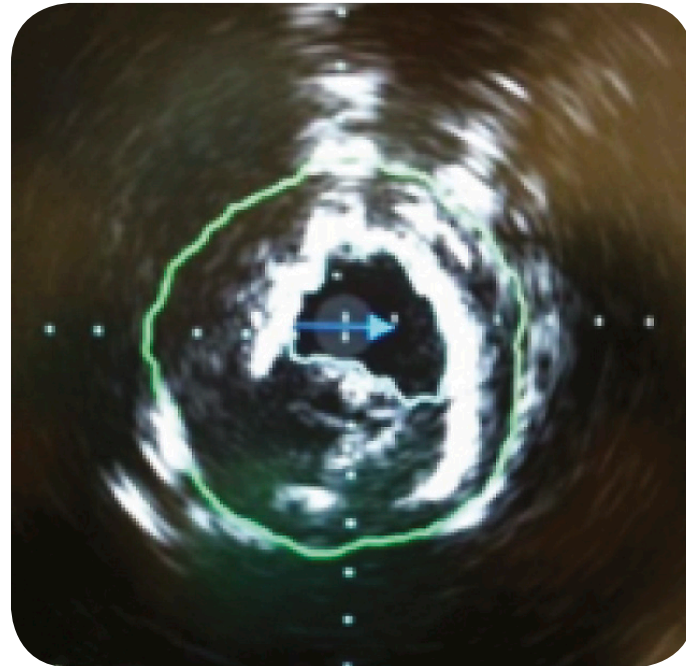
True front-cutting tips follow the guidewire through tight lesions without pre-dilation.

Increase / Remodel Lumen Area

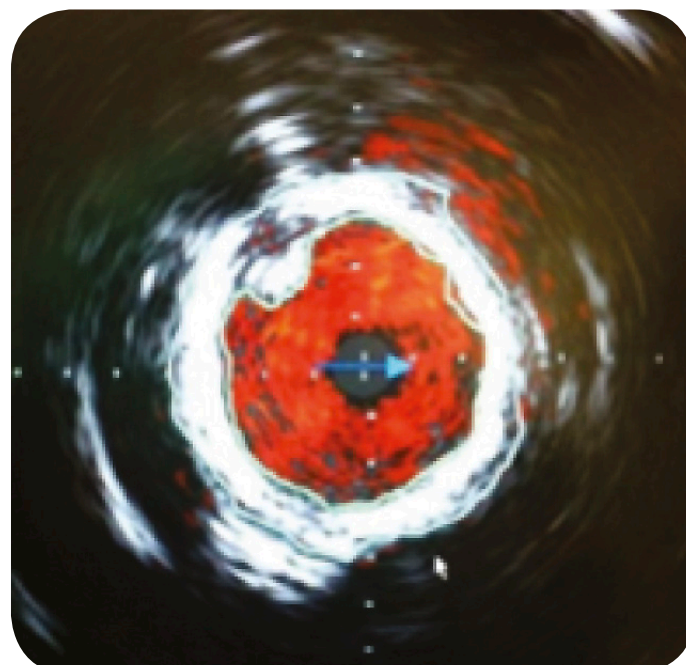
Rotational design supports concentric lumens, which facilitate laminar flow.

Remove the Debris

The Jetstream™ System is the only atherectomy device with continuous active aspiration.

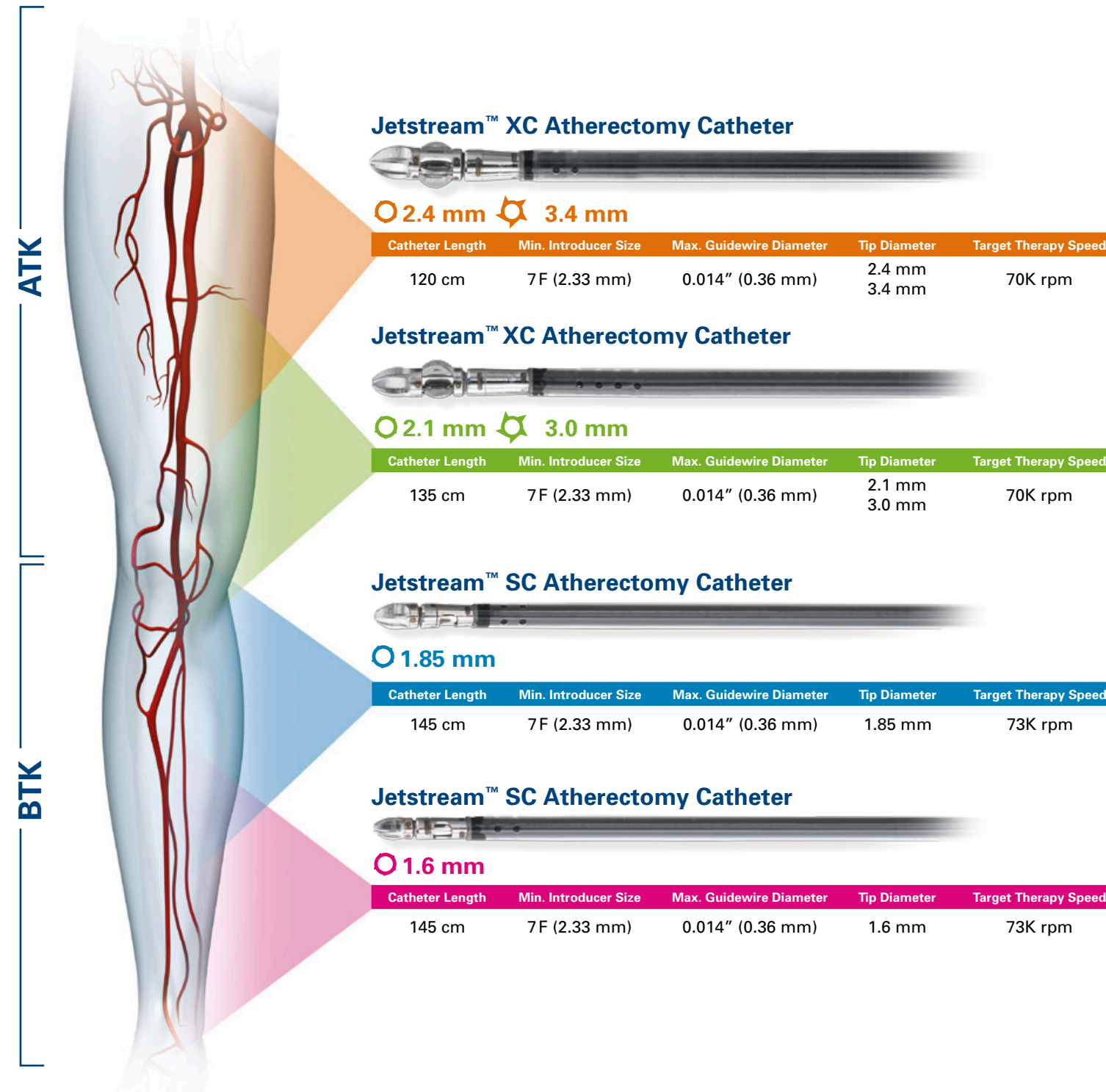


Prior to treatment, IVUS shows tight, irregular lesion



After treatment with Jetstream™ XC catheter, IVUS shows concentric luminal gain
Images show result from one case, results may vary.

EFFECTIVELY TREAT LESIONS ABOVE AND BELOW THE KNEE



ERGONOMIC, SINGLE OR DUAL-OPERATOR DESIGN

The light and ergonomic XC and SC catheters are designed to enhance ease of use. Control buttons are integrated into the mouse, which can be used either in the pod or removed for remote activation. The improved Wire GARD simplifies wire management.



- Ergonomic design with 32% smaller* POD enhances user experience
- Intuitive user interface facilitates single or dual operator use
- Improved wire GARD* simplifies wire management
- Advanced package and POD design reduces environmental footprint

*As compared to previous, G3 version catheters.