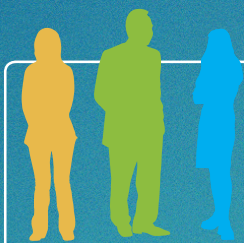


CHRONIC PAIN

More Than Just Aches and Pain



1 in 3

Americans suffer from chronic pain¹

Cost of chronic pain for each person living in the U.S.²

\$2,000



100 Million+
Americans are partially or totally disabled by pain¹

More than the annual cost of cancer, heart disease or diabetes²

Taking more than just a physical toll, chronic pain can have a devastating impact and may result in³:

Many people rely on pain medication to manage chronic pain, but it can cause drowsiness, hallucinations and/or lead to addiction⁵



Strained personal relationships



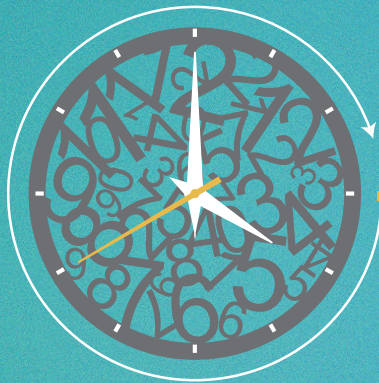
Loss of productivity or inability to work



Increased financial burden



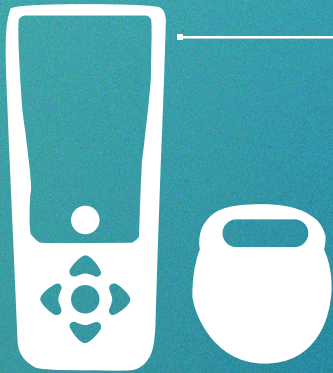
Feeling depressed or withdrawing from others



Enough prescription painkillers were prescribed in 2010 to medicate every American adult around-the-clock for a month⁴

SPINAL CORD STIMULATION

A safe and effective option



Patients control their pain using a cordless remote with a portable charger

With SCS, patients may be able to eliminate or reduce their dependency on pain medications

Many patients are able to regain control of their lives

SCS uses an implanted medical device to send electrical impulses that trigger nerves selectively along the spinal cord and mask the pain message traveling to the brain



Indications for Use. The Boston Scientific Spinal Cord Stimulator Systems are indicated as an aid in the management of chronic intractable pain of the trunk and/or limbs including unilateral or bilateral pain associated with the following: failed back surgery syndrome, Complex Regional Pain Syndrome (CRPS) types I and II, intractable low back pain and leg pain. Associated conditions and etiologies may be: radicular pain syndrome, radiculopathies resulting in pain secondary to failed back surgery or herniated disc, epidural fibrosis, degenerative disc disease (herniated disc pain refractory to conservative and surgical interventions), arachnoiditis, multiple back surgeries. **Contraindications.** The Spinal Cord Stimulator systems are not for patients who are unable to operate the system, have failed trial stimulation by failing to receive effective pain relief, are poor surgical risks, or are pregnant.

Patients implanted with the Precision Montage™ MRI or Precision Spectra™ Spinal Cord Stimulator System with ImageReady™ MRI Technology are "MR Conditional" only when exposed to the MRI environment under the specific conditions defined in the ImageReady MRI Full Body Guidelines for Precision Montage MRI Spinal Cord Stimulator System and ImageReady MRI Guidelines for Precision Spectra Spinal Cord Stimulator System Manual (Head Only MRI scans). The Precision Montage MRI SCS System provides safe access to Full-Body MRI Scans only when used with the Avista MRI Leads and exposed to the MRI environment under the specific conditions defined in the ImageReady MRI Full Body Guidelines for Precision Montage MRI Spinal Cord Stimulator System.

Warnings. Patients implanted with the Precision™ Plus, Precision Spectra, Precision Montage MRI, Precision Novi™, or Spectra WaveWriter™ Spinal Cord Stimulator System without ImageReady MRI Technology should not be exposed to Magnetic Resonance Imaging (MRI). Exposure to MRI may result in dislodgement of the stimulator or leads, heating of the stimulator, severe damage to the stimulator electronics and an uncomfortable or jolting sensation. As a Spinal Cord Stimulation patient, you should not have diathermy as either a treatment for a medical condition or as part of a surgical procedure. Strong electromagnetic fields, such as power generators or theft detection systems, can potentially turn the stimulator off, or cause uncomfortable jolting stimulation. The system should not be charged while sleeping. The Spinal Cord Stimulator system may interfere with the operation of implanted sensing stimulators such as pacemakers or implanted cardiac defibrillators. Advise your physician that you have a Spinal Cord Stimulator before going through with other implantable device therapies so that medical decisions can be made and appropriate safety measures taken. Patients should not operate motorized vehicles or potentially dangerous machinery with therapeutic stimulation switched "on." Your doctor may be able to provide additional information on the Boston Scientific Spinal Cord Stimulator systems. For complete indications for use, contraindications, warnings, precautions, and side effects, call 866.360.4747 or visit ControlYourPain.com.

Caution: U.S. Federal law restricts this device to sale by or on the order of a physician.

NM-269004-AA_JAN2018 © 2018 Boston Scientific Corporation or its affiliates. All rights reserved.

Sources
1. Institute of Medicine
http://books.nap.edu/openbook.php?record_id=13172&page=1
2. Institute of Medicine
http://books.nap.edu/openbook.php?record_id=13172&page=1
3. The impact of chronic pain in the community
<http://fampra.oxfordjournals.org/content/18/3/292.full>
4. CDC Centers for Disease Control and Prevention:
"Prescription Painkiller Overdoses in the US"
<http://www.cdc.gov/vitalsigns/PainkillerOverdoses/index.html>
5. National Survey on Drug Use and Health
<http://www.samhsa.gov/data/NSDUH/2k10NSDUH/2k10Results.htm#Ch7>

For more information, visit ControlYourPain.com