

*The therapy referred to here may be one of several left heart procedures that require transseptal access. Additional procedural steps and/or devices may be required to deliver the therapy. Before use, consult Instructions for Use for any devices accordingly.

†FARADrive™ Steerable Sheath as shown in this brochure is sold separately.

‡The VersaCross Connect Transseptal Dilator is for use with a 13F (4.31 mm) ID FARADrive™ Steerable Sheath which is 74cm in length, specifically, model: M004 PFCE21M402.

CAUTION: The law restricts these devices to sale by or on the order of a physician. Indications, contraindications, warnings, and instructions for use can be found in the product labelling supplied with each device or at www.IFU-BSCI.com.

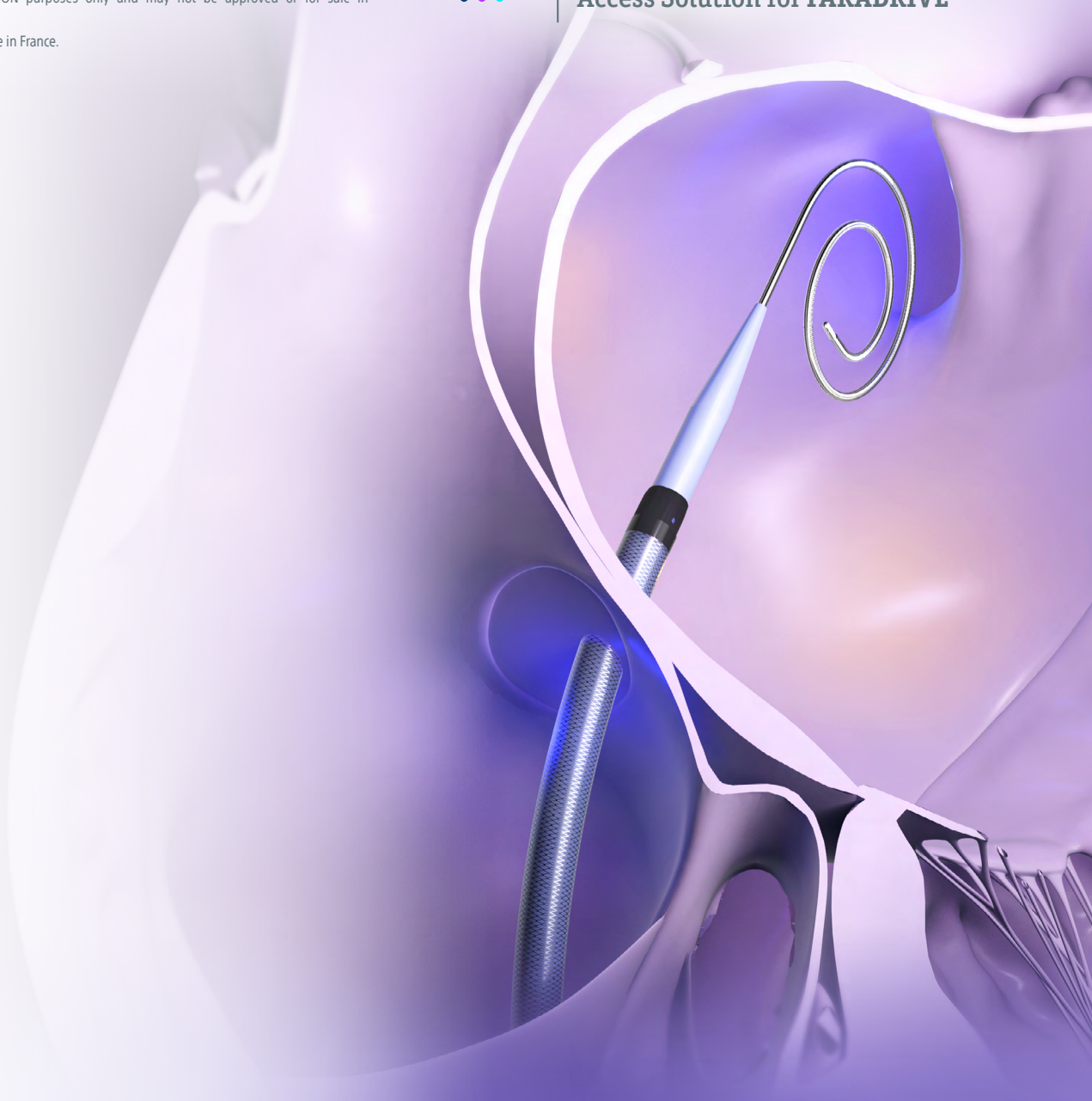
Products shown for INFORMATION purposes only and may not be approved or for sale in certain countries.

This material not intended for use in France.



VersaCross Connect™

Access Solution for FARADrive™



Driving Peace of Mind

ZERO EXCHANGE

FARADrive™ Steerable Sheath delivery
For use with the FARAPULSE™
Pulsed-Field Ablation System

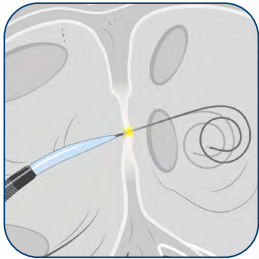
INTEGRATED PREDICTABILITY

with the **VersaCross Connect™** Access Solution for **FARADrive™**

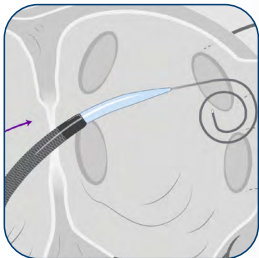
EXCHANGELESS **3-in-1** RF Wire



1 Start
by tracking up to the SVC



2 Access
with purpose-built RF



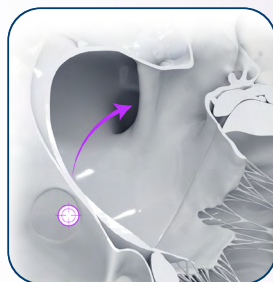
3 Deliver
with confidence

**Predictable and
Efficient Transseptal**
for smooth **FARADrive™**
Steerable Sheath delivery

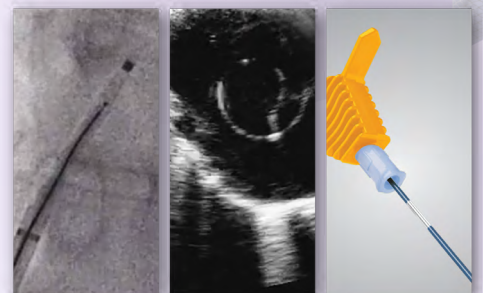
DELIVER THERAPY ON TARGET



TRUform™
Shapeable Technology



Precise RF
Puncture Technology



VersaCross Connect™

Access Solution for FARADrive™

Personalize your solution

1. Choose your VersaCross™ RF Wire



2. Connect with VersaCross Connect™ Transseptal Dilator



Inner diameter: 0.035"
Outer diameter: 13F (4.31 mm)
Useable length: 93 cm

Ordering information

| Part. No. | Wire | Wire length | Dilator curve | Dilator length |
|-----------|---------|-------------|---------------|----------------|
| VXAK3041 | Pigtail | 180 cm | D1 | 93 cm |
| VXAK3045 | J-Tip | 180 cm | D1 | 93 cm |

OMNIVIZ™ Technology

Reliably locate the **VersaCross Connect™** solution on fluoroscopy and ultrasound. Positional markers indicate position of RF tip within dilator. Connect to DuoMode™ Cable to track and mark RF tip on mapping systems.

ZERO EXCHANGE

to your therapy delivery
in a **SINGLE SOLUTION**



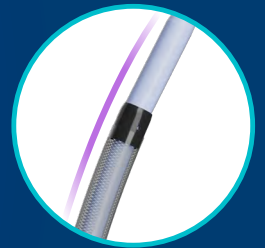
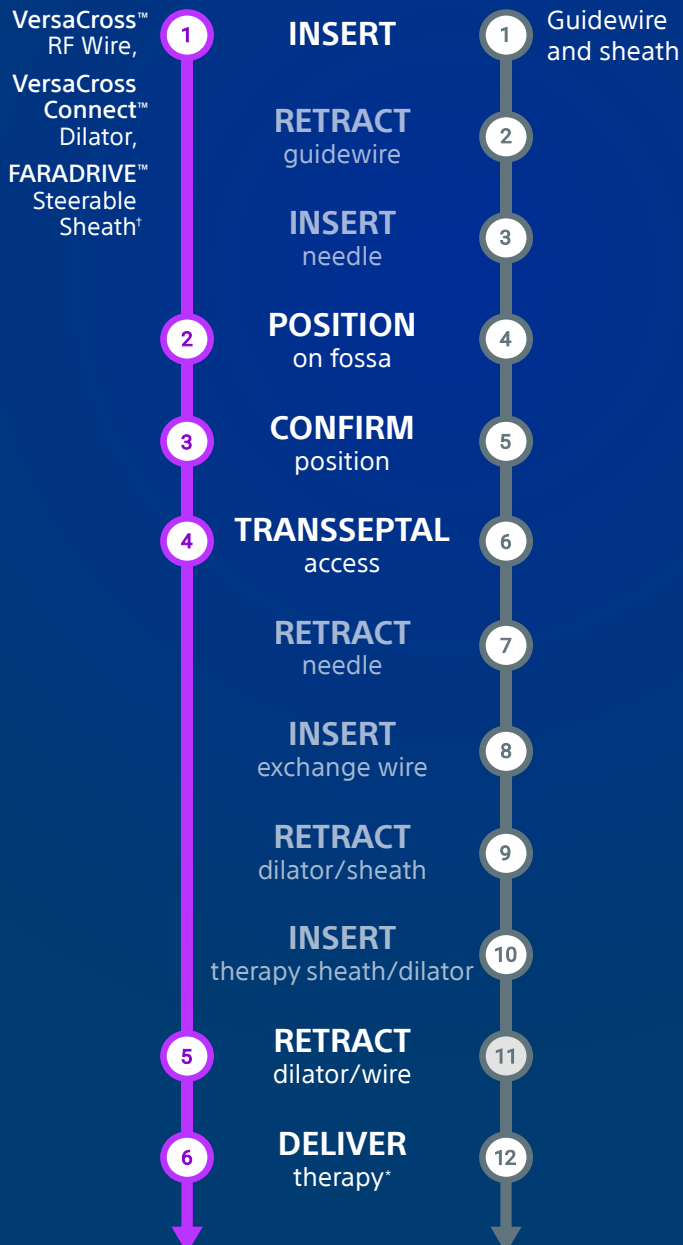
VersaCross Connect™

Access Solution for **FARADrive™**

DESIGNED for use with the
FARADrive™
Steerable Sheath†

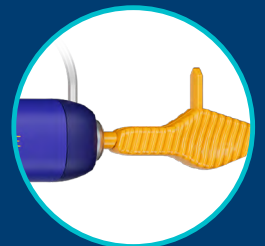
**3-IN-1
RF WIRE**

for use as a starter wire,
puncture device, and
exchange rail



Smooth transition between
VersaCross Connect™ Dilator
and FARADrive™ Sheath†

Snap-lock designed for
FARADrive™ Sheath†



†FARADrive™ Steerable Sheath as shown in this brochure is sold separately.