

SpyGlass™ DS II Direct Visualization System

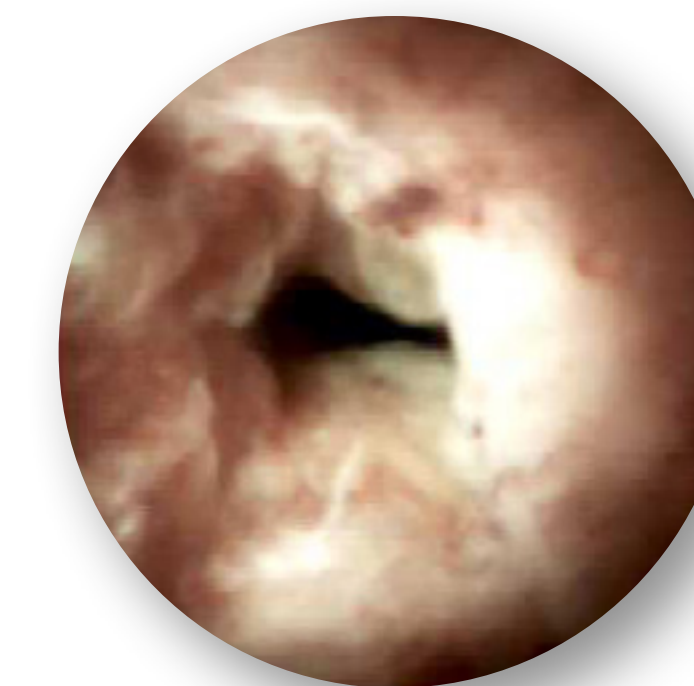
**Boston
Scientific**
Advancing science for life™

The SpyGlass DS System

A Robust Suite of Solutions
Redesigned Portfolio

Ordering Information

Additional Resources



**WHETHER CASES ARE SIMPLE OR COMPLEX,
THE STANDARD OF CARE SHOULD BE ANYTHING BUT STANDARD.**

About Cholangioscopy

The SpyGlass DS System



A Robust Suite of Solutions
Redesigned Portfolio

Ordering Information

Additional Resources



View of normal ducts



Taking a biopsy using
SpyBite™ Biopsy Forceps



Fragmenting a large
stone using EHL

The SpyGlass™ DS System

The SpyGlass DS System enables high resolution imaging and therapy during an endoscopic retrograde cholangiopancreatography (ERCP) procedure to target biopsies and fragment stones, which may result in **more efficient evaluation** and help **reduce the need for additional testing and repeat procedures** compared to traditional ERCP, and enable patients to **receive treatment sooner**⁶. The system enables direct visualization of the bile and pancreatic ducts and can help obtain biopsy specimens, lead to the diagnosis of abnormalities, and guide stone therapy.

Since its launch in 2015, the SpyGlass DS System has impacted more than **110,000 patient lives** in more than **65 countries**.

110,000
PATIENTS



65
COUNTRIES

[> Learn More About the SpyGlass DS System](#)

Previous
Page



Next
Page

About Cholangioscopy

The SpyGlass DS System

A Robust Suite of Solutions
Redesigned Portfolio

Ordering Information

Additional Resources



The SpyGlass™ DS System provides **important clinical, operational and economic benefits for managing patients** with complex pancreaticobiliary disorders, such as difficult stones and indeterminate strictures.



85%
ALTERED

In a clinical study of 289 patients, **clinical management was altered in 85% of patients** undergoing diagnostic ERCP with cholangioscopy.¹²

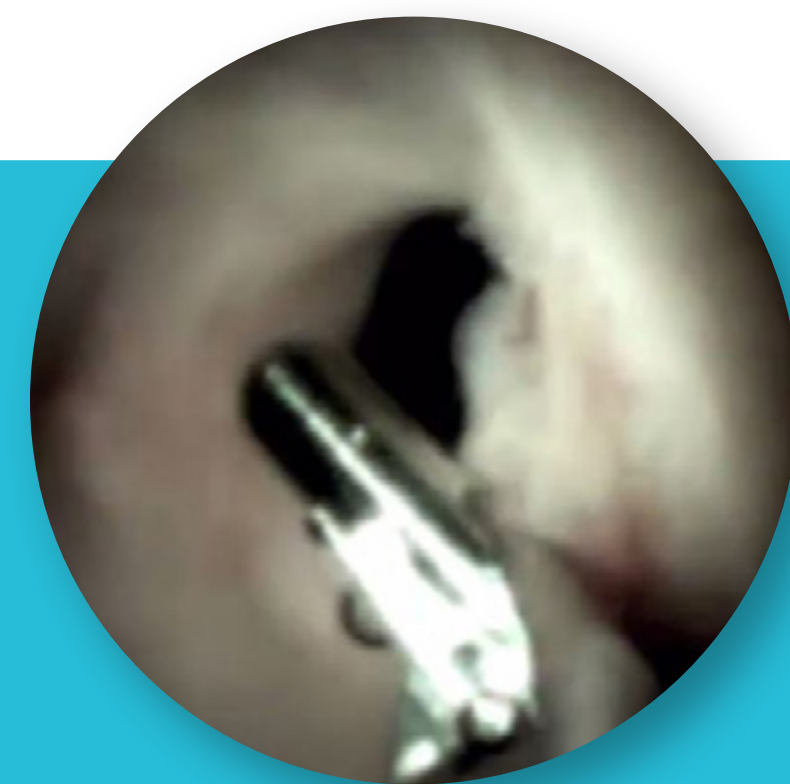


95%
SUCCESS

95% stone clearance rates² may reduce the need for more invasive and costly procedures, which may have a significant impact on patient outcomes and patient satisfaction.



May enable **faster, more definitive cancer diagnosis** by allowing clinicians to obtain biopsies of tissue under direct visualization, improving sensitivity and diagnostic yield.^{1*}



A recent study showed the SpyGlass DS System provided enhanced diagnostic yield, shorter procedure times, and less radiation exposure compared to a fiberoptic single-operator cholangiopancreatography system.¹⁰



Fluoroscopy vs Digital Imaging

The SpyGlass DS System

A Robust Suite of Solutions
Redesigned Portfolio

Ordering Information

Additional Resources

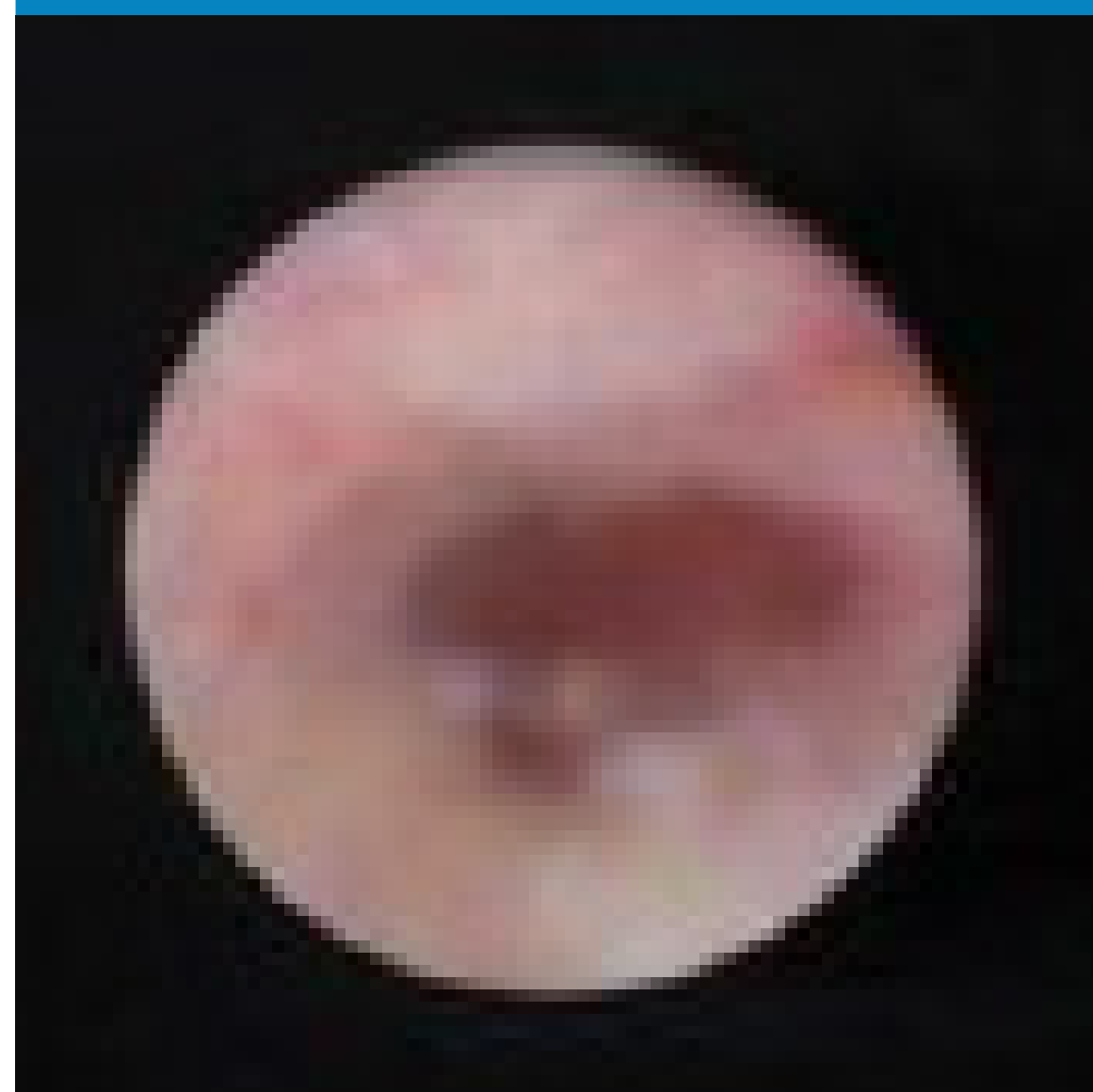


Does reliance upon two dimensional, black and white imaging (fluoroscopy) enable the most effective way to diagnose and treat pancreaticobiliary strictures and stones?

Fluoroscopic Cytology Brush



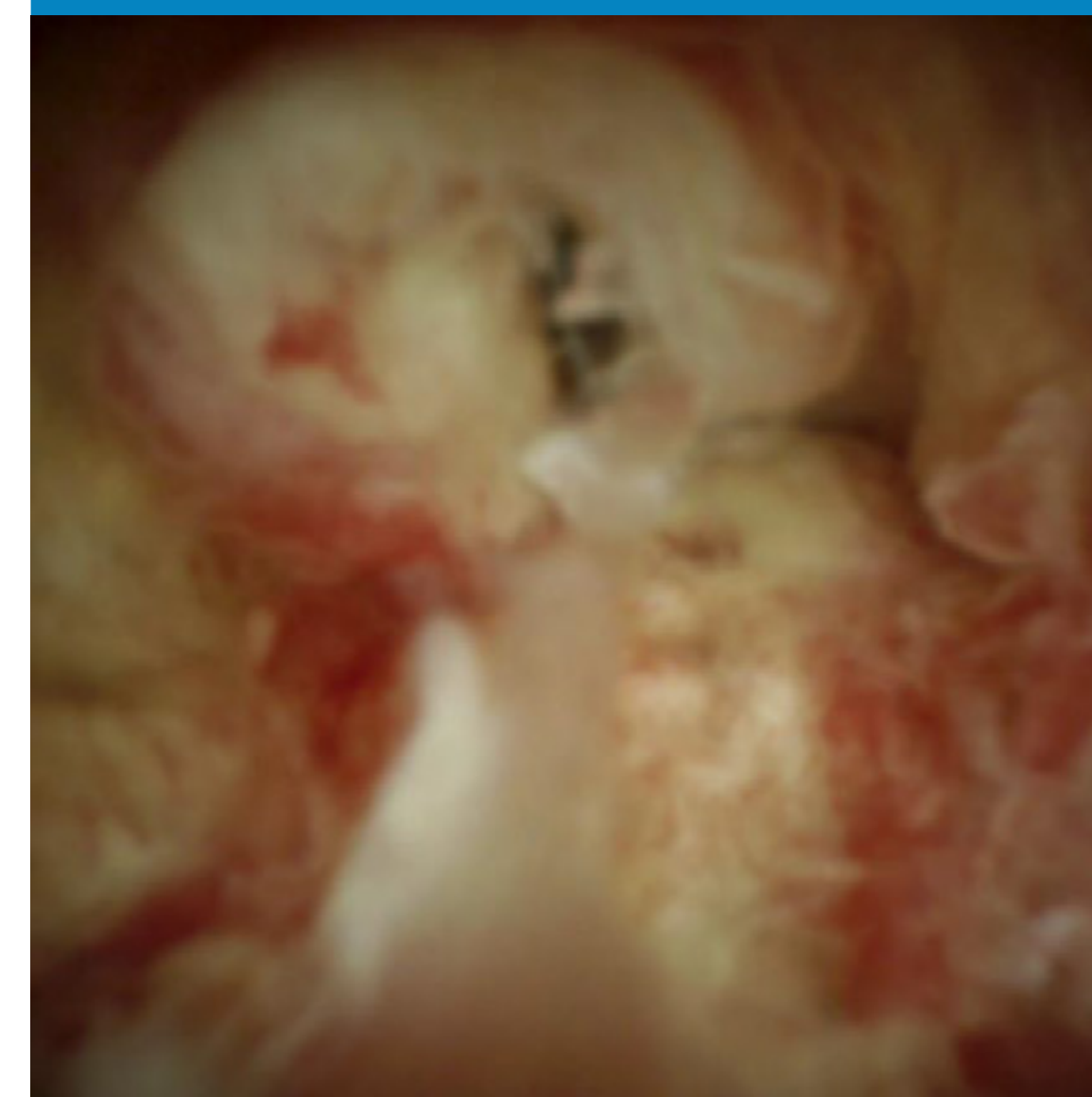
First Generation SpyGlass™ System



SpyGlass DS System



SpyGlass DS II System



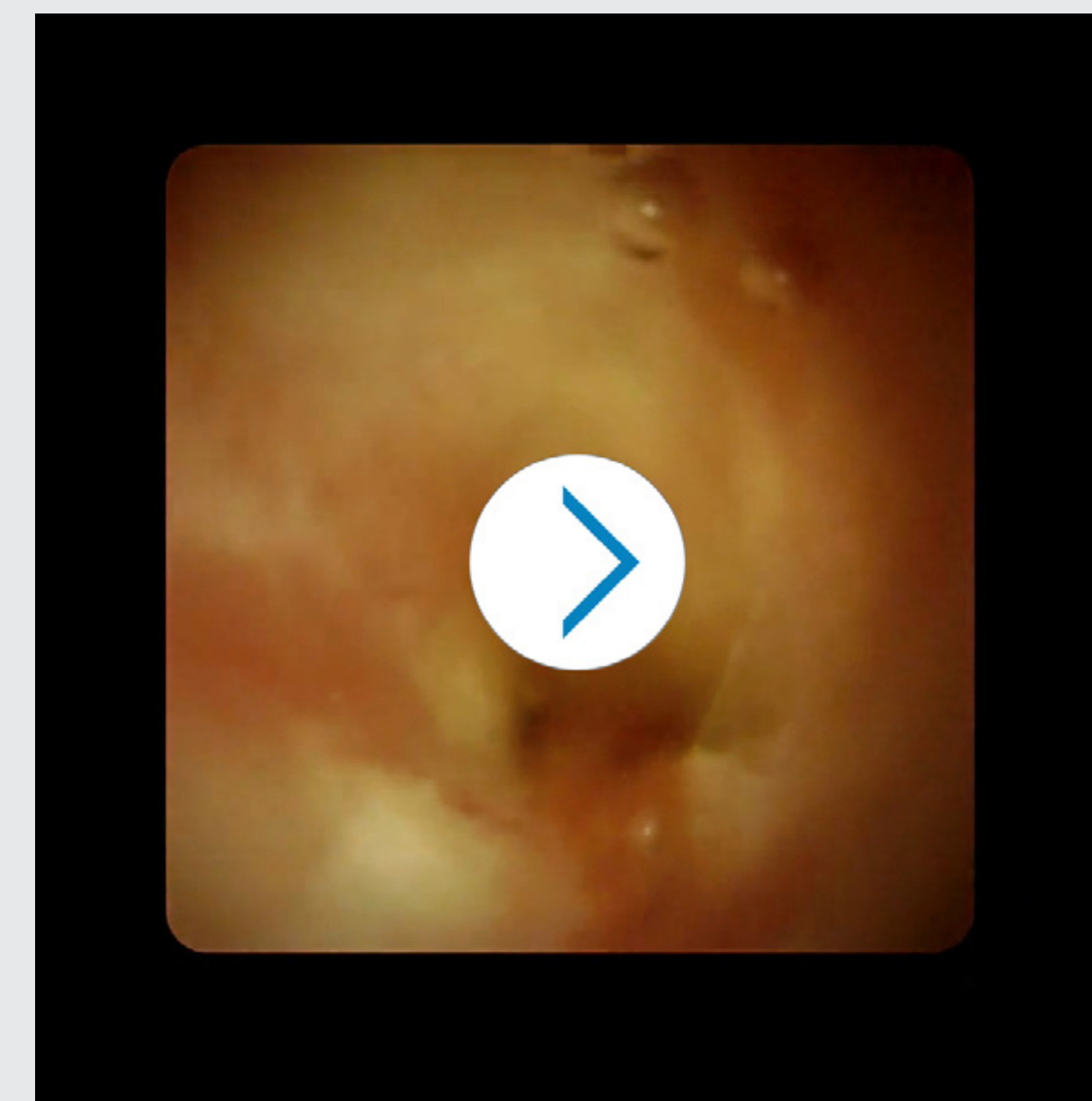
SENSITIVITY
45%¹³

SENSITIVITY
44%⁷

SENSITIVITY
86%⁸



Click to watch video below



View of Cholangiocarcinoma
Video provided courtesy of
Isaac Raijman, M.D.

Previous Page



Next Page

SpyScope™ DS II Access & Delivery Catheter

The SpyGlass DS System

A Robust Suite of Solutions
Redesigned Portfolio

Ordering Information

Additional Resources



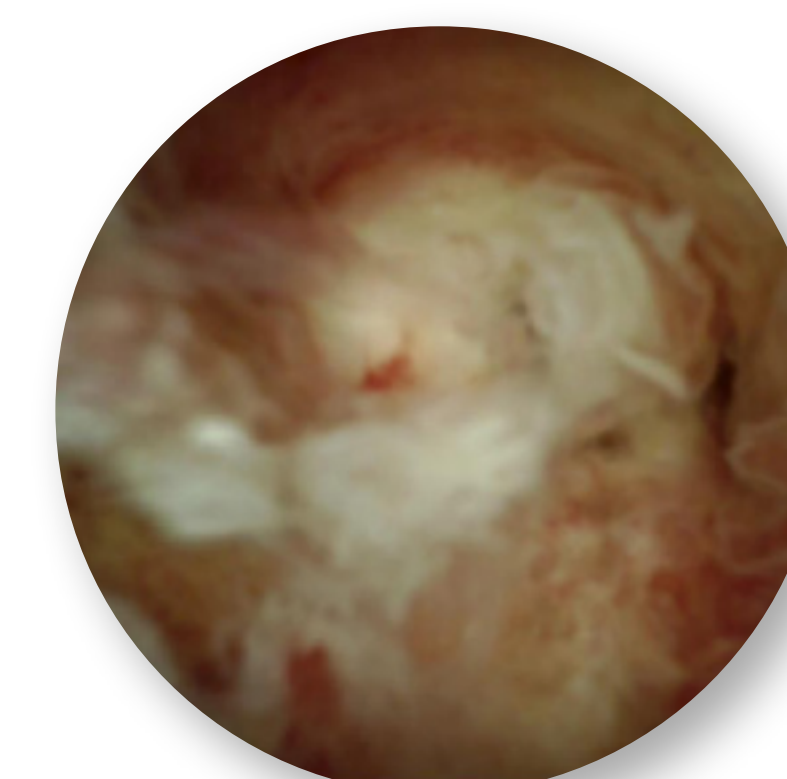
Our Purpose is Clear:

The 3rd Generation SpyScope DS II Access & Delivery Catheter

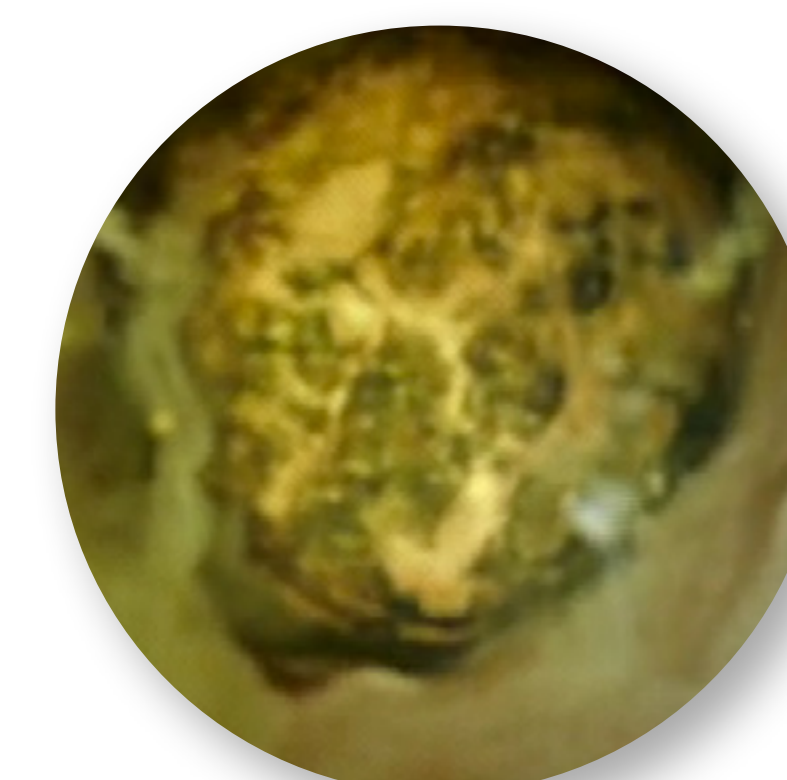
Built on the **ground-breaking technology** of the SpyScope DS Catheter, the SpyScope DS II Catheter features **increased resolution** and **adjusted lighting** to provide physicians with an **even better view** of the biliary and pancreatic ducts.



View of Biliary Duct



View of Cholangiocarcinoma



View of Biliary Stone



SpyScope DS II Catheter

New CMOS chip featuring increased resolution

Adjusted lighting designed to reduce light flare, improve lighting in the corners of the video, and provide an enhanced view down the lumen

Increased resolution, at 2.5x that of the SpyScope DS Catheter**

- HDR processing for improved visibility
- Easy platform upgrade process

2.5x INCREASED RESOLUTION

Previous Page



Next Page

New Accessories

The SpyGlass DS System

A Robust Suite of Solutions
Redesigned Portfolio

Ordering Information

Additional Resources



Redesigned Suite of Compatible Accessory Devices: Stricture Management

SpyBite™ Max Biopsy Forceps

A design enhancement to the legacy SpyBite Biopsy Forceps have been shown to acquire **more than 2X tissue in an average bite.**¹³



**FRONT AND SIDE SERRATED
TEETH PROFILE**

**TWO ELONGATED
FENESTRATION HOLES**

INTERNAL SPIKE REMOVED



Performing biopsies under direct visualization using the SpyGlass System and SpyBite™ Biopsy Forceps (86% sensitivity) enables **faster, more accurate diagnosis of malignancies.**⁸

The SpyGlass DS System modality should be considered for the first-line management of strictures.

Previous Page



Next Page

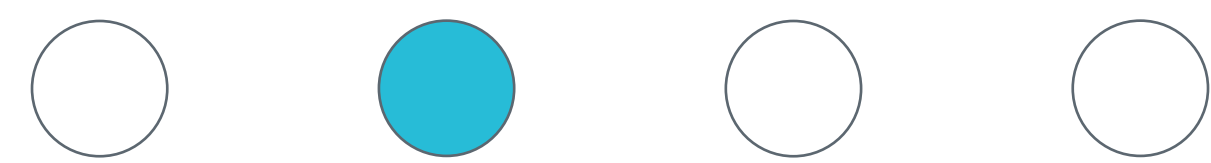
New Accessories

The SpyGlass DS System

A Robust Suite of Solutions
Redesigned Portfolio

Ordering Information

Additional Resources



Redesigned Suite of Compatible Accessory Devices: Stricture Management

Getting More with SpyBite Max Biopsy Forceps

97%

TISSUE
ACQUISITION
RATE***

Higher tissue acquisition rate can enable **more efficient** procedures

89%

OF
PHYSICIANS***

Stated SpyBite Max acquires **more tissue** on an average bite than SpyBite

88%

OF
PHYSICIANS***

Were **more confident** in their ability to acquire tissue from challenging scope positions



Previous Page



Next Page

New Accessories

The SpyGlass DS System

A Robust Suite of Solutions
Redesigned Portfolio

Ordering Information

Additional Resources



Redesigned Suite of Compatible Accessory Devices: Stone Management

SpyGlass™ Retrieval Basket

NEW
Mediglide
Enhanced
for Smoother
Deployment
& Actuation

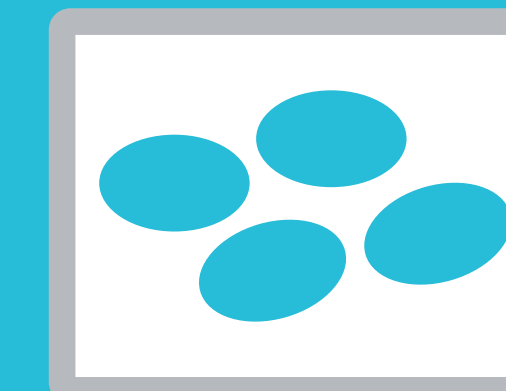


The SpyGlass Retrieval Basket can be used to capture and remove residual biliary and pancreatic stones and stone fragments visualized with the SpyGlass DS System.

Electrohydraulic Lithotripsy (EHL)



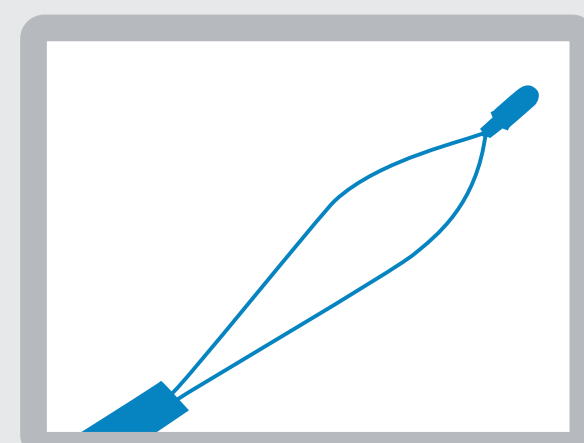
Direct visualization stone clearance using EHL has been shown to be clinically effective with demonstrated **procedural success**, with single-session stone clearance rates of ~75%².



In a recent study, **15/50 patients (30%) were found to have residual biliary stones** that were not seen with occlusion cholangiogram, but were detected when the SpyGlass DS system was used.¹¹

Achieving single session stone clearance and reducing the need for a repeat procedure(s) may deliver greater patient satisfaction and decrease unnecessary procedural costs.

SpyGlass Retrieval Snare



The new SpyGlass Retrieval Snare **is designed to enable efficient capture and removal of foreign bodies** in the biliary and pancreatic ducts, such as migrated plastic stents, during an ERCP procedure.



Capture and removal of a biliary plastic stent using the SpyGlass Retrieval Snare.

Previous Page



Next Page

A History of Innovation in Cholangioscopy

The SpyGlass DS System

A Robust Suite of Solutions
Redesigned Portfolio

Ordering Information

Additional Resources



1970
First documented use of 'mother-baby' cholangioscopy

2011
Publication of Clinical Registry in GIE 297 patients – largest study at the time of peroral cholangioscopy⁷

2016
Winner – Silver MEDA Award in the Radiological and Electromechanical Devices category



2020
Launch of the next generation, SpyBite™ Max Biopsy Forceps

2007
Launch of the First Generation SpyGlass™ System and SpyBite™ Biopsy Forceps

2015
Winner – R&D 100 Award
2015
Launch of the Next Generation SpyGlass DS System



2017
Co-exclusive distribution with Northgate Technologies, enabling access of EHL globally

2018
Launch of the 3rd generation SpyScope™ DSII Catheter, SpyGlass Retrieval Basket and SpyGlass Retrieval Snare.

1970

2007

2011

2015

2016

2017

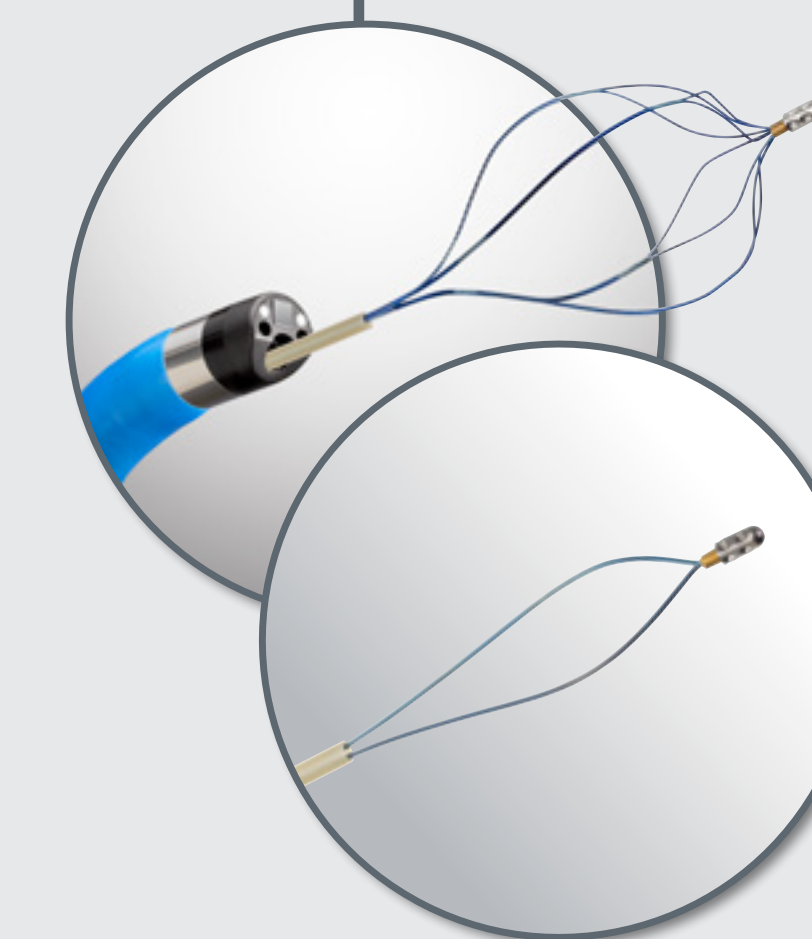
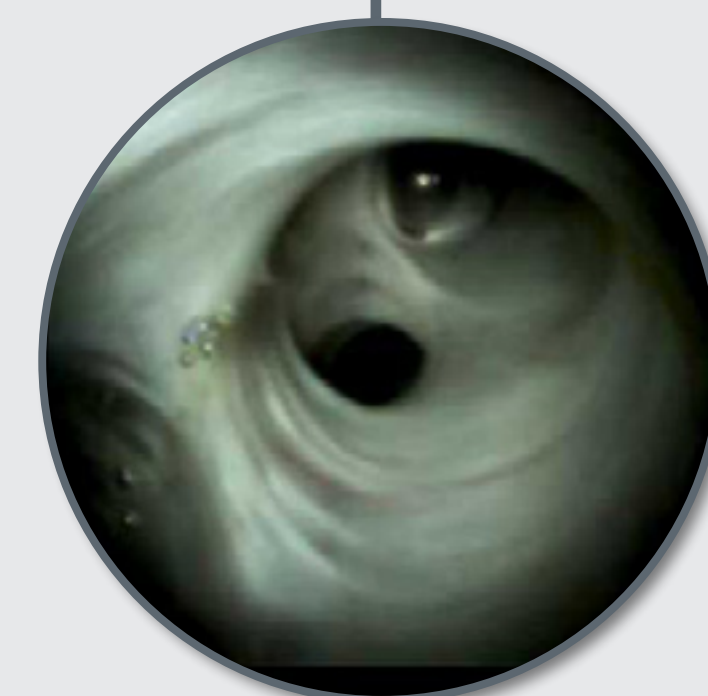
2018

2020

Continuing
Innovation



Slow adoption due to technical & cost limitations.



> For the latest cholangioscopy news and updates, visit www.bostonscientific.com/cholangioscopy

Previous Page



Next Page

Ordering Information

The SpyGlass DS System

A Robust Suite of Solutions
Redesigned Portfolio

Ordering Information

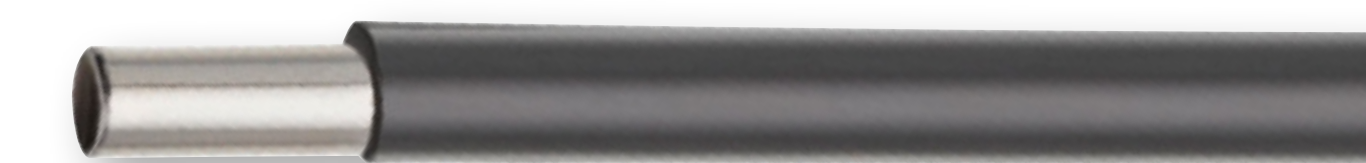
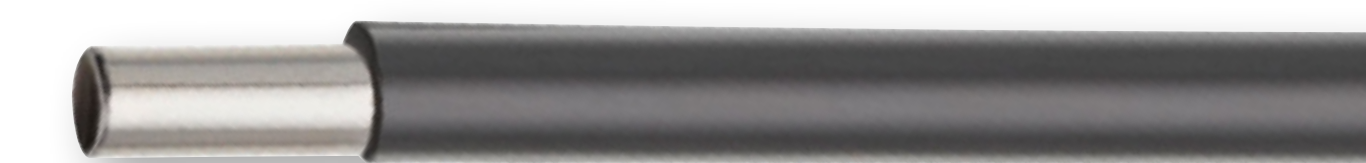
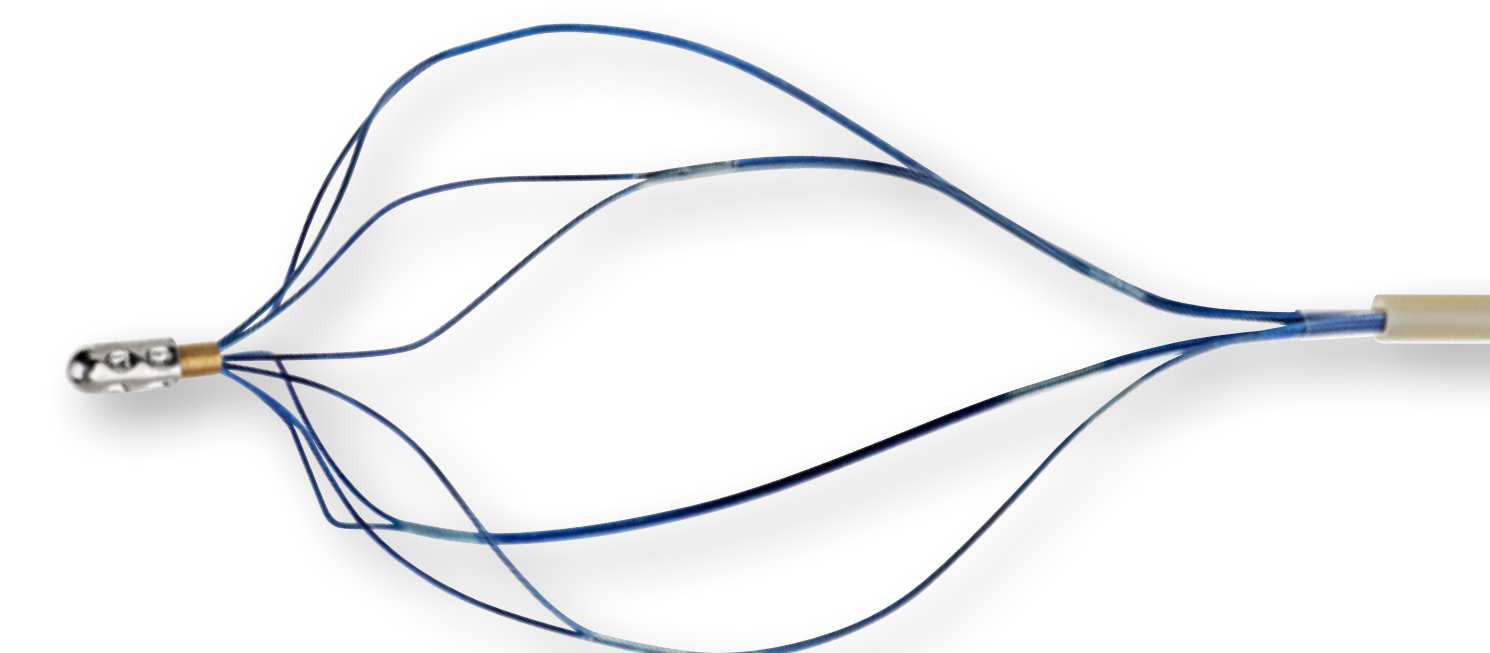
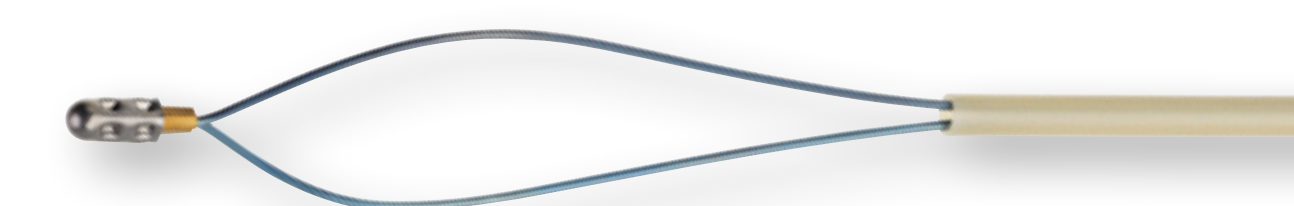
Additional Resources

Order Number	Product Description
SpyGlass™ DS System Capital	
M005 46650	SpyGlass™ DS Digital Controller
SpyGlass DS System Device	
M005 46610	SpyScope™ DS II Access & Delivery Catheter
M005 46600	SpyScope DS Access and Delivery Catheter

Order Number	Product Description	Cable Diameter (in / mm)	Jaw Outer Diameter (mm)	Jaw Opening (mm)	Working Length (cm)	Required Endoscope working Channel (mm)	Diameter (mm) (open)
SpyGlass DS Accessory Devices (Optional)							
M005 46470	SpyBite™ Max Biopsy Forceps	0.039/1.0	1.0	4.1/55°	286	1.2	N/A
M005 46270	SpyBite™ Biopsy Forceps	0.039/1.0	1.0	4.1/55°	286	1.2	N/A
M005 46550	SpyGlass Retrieval Basket	NA	NA	NA	286	1.2	15
M005 46560	SpyGlass Retrieval Snare	NA	NA	NA	286	1.2	9

Order Number	Product Description
Biliary EHL Probe	
M005 46620	1.9Fr., 375cm Biliary EHL Probe
Autolith™ Touch System	
M005 46680	Autolith Touch EHL Generator

Order Number	Product Description
Autolith Touch System Accessories	
M005 46750	Autolith Touch Extender Cable
M005 46760	Autolith Touch Foot Pedal



Download the Product Catalog

Previous Page



Next Page

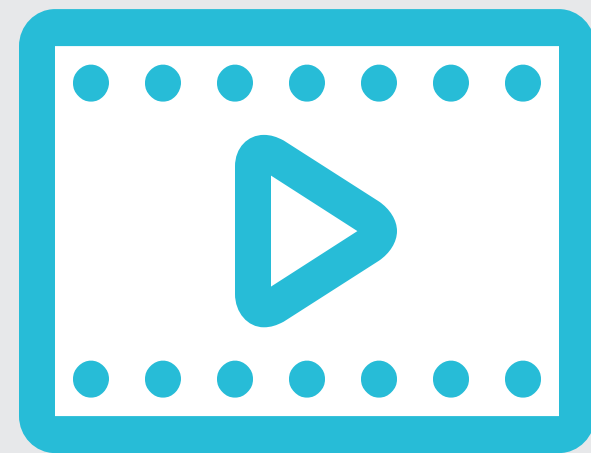
Additional Resources

The SpyGlass DS System

A Robust Suite of Solutions
Redesigned Portfolio

Ordering Information

Additional Resources

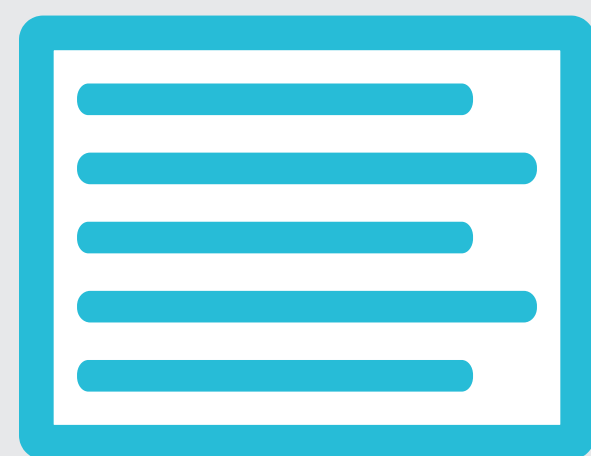
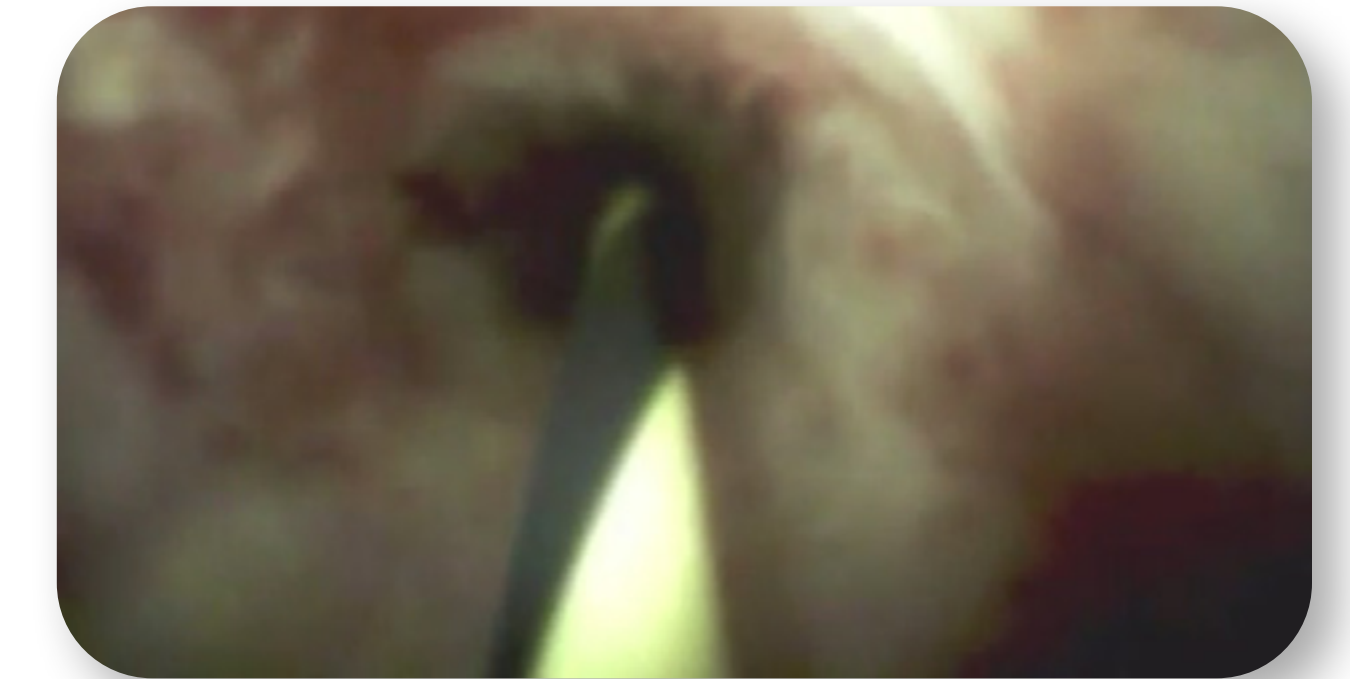


LET'S GO! ▶

Cholangioscopy and Pancreatoscopy Video Atlas

Explore our library of short video clips to help familiarize yourself with the appearance of various pancreatic and biliary findings as seen using cholangioscopy with the SpyGlass DS System.

(Internet Required)



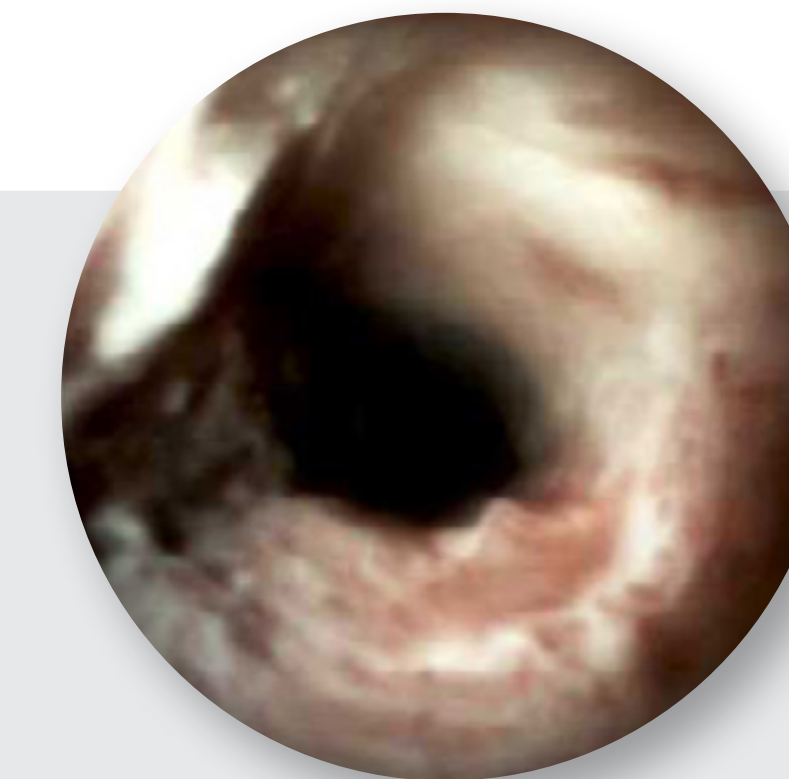
LET'S GO! ▶

Cholangioscopy Image Reference Guide

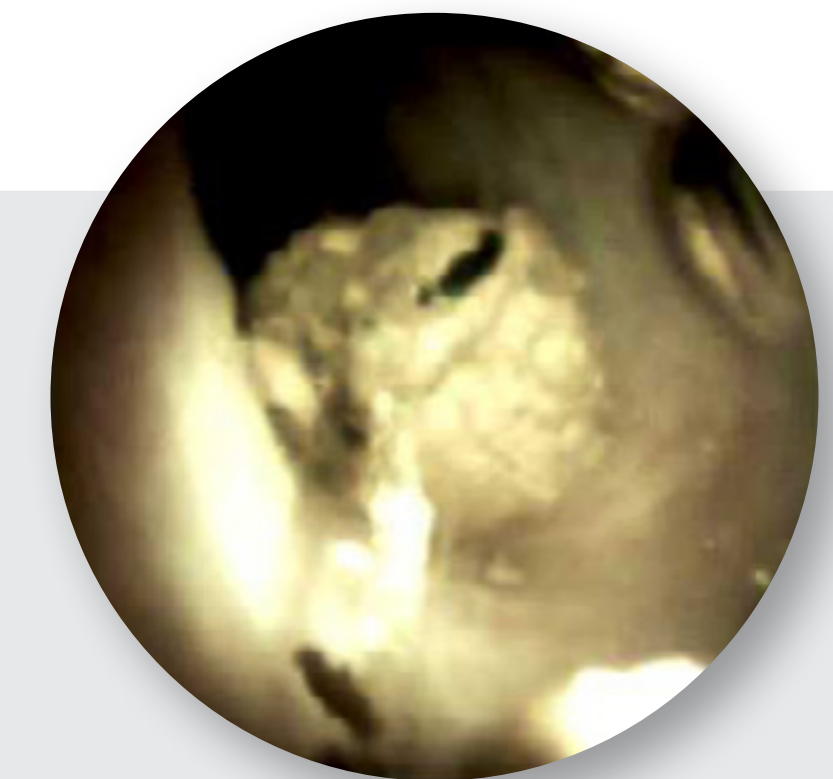
Become familiar with the appearance of strictures, villous lesions, stone disease, and more using the SpyGlass DS System. *(Internet Required)*



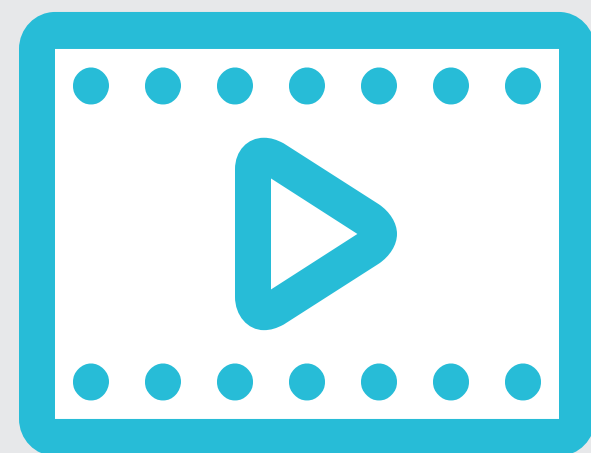
Normal Duct



Cholangiocarcinoma



Cystic Duct Stone



LET'S GO! ▶

Visit EndoSuite.com to watch presentations, programs and case studies featuring the SpyGlass™ DS System. *(Internet Required)*



Keep up to date with the latest resources and information by visiting
www.bostonscientific.com/cholangioscopy



Follow us
on Twitter

Previous
Page



Next
Page



* Compared to cytology brushing.

** Because the analysis of sensitivity in intrinsic versus extrinsic disease was limited to patients with a final diagnosis of malignancy, no computation of specificity was possible.

*** Data on File.

**** Kashab, Optimizing the Diagnosis and Treatment of Pancreaticobiliary Disease: Digital Cholangioscopy Using the SpyGlass DS System, G&E News Special Report [April, 2019].

References:

1. J Jailwala, E Fogel, S Sherman, et al. Triple-tissue sampling at ERCP in malignant biliary obstruction. *Gastrointest Endosc* 2000; 51(4):383-390.
2. Brewer Gutierrez OI, Bekkali NL, Rajiman I, Sturgess R, Sejpal DV, Aridi HD, Sherman S, Shah RJ, Kwon RS, Buxbaum JL, Zulli C, Wassef W, Adler DG, Kushnir V, Wang AY, Krishnan K, Kaul V, Tzimas D, DiMaio CJ, Ho S, Petersen B, Moon JH, Elmunzer BJ, Webster GJ, Chen Y-I, Dwyer LK, Inamdar S, Patrick VB, Attwell A, Hosmer A, Ko C, Maurano A, Sarkar A, Taylor LJ, Gregory MH, Strand DS, Raza A, Kothari S, Harris JP, Kumta NA, Manvar A, Topazian MD, Lee YN, Spiceland CM, Bukhari MA, Sanaei O, Ngamruengphong S, Khashab MA, Efficacy and Safety of Digital Single-Operator Cholangioscopy for Difficult Biliary Stones, *Clinical Gastroenterology and Hepatology* (2017), doi: 10.1016/j.cgh.2017.10.017.
3. Ponchon T et al. Value of endobiliary brush cytology and biopsies for the diagnosis of malignant bile duct stenosis: results of a prospective study. *GIE* 1995. 42(6): 565-72
4. Lee JG et al. Benign, dysplastic, or malignant – making sense of endoscopic bile duct brush cytology: results in 149 consecutive patients. *Am J Gastroenterol*. 1995 90(5)722-6.
5. Ornellas LC et al. Comparison between endoscopic brush cytology performed before and after biliary stricture dilation for cancer detection. 2006 (41)1: 20-23.
6. Draganov et al., Diagnostic accuracy of conventional and cholangioscopy-guided sampling of indeterminate biliary lesions at the time of ERCP: a prospective, long-term follow-up study, *GIE*, Vol. 75 (2); February 2012.
7. Chen Y et al, Single-operator cholangioscopy in patients requiring evaluation of bile duct disease or therapy of biliary stones (with videos). *Gastrointest Endosc* 2011; 74:805-814.
8. Shah et al. Performance of a fully disposable, digital, single-operator cholangiopancreatoscope. *Endoscopy* 2017; 49: 651–658.
9. Parsi et al. Endoscopic management of difficult common bile duct stones. *World J Gastroenterol* 2013; 19(2): 165-173
10. Pleskow et al. "Apple Far from the Tree": comparative effectiveness of fiberoptic single-operator cholangiopancreatoscopy (FSOCP) and digital SOCP (DSOCP). *HPB* 2018, 20, 285–288.
11. Sejpal et al. Prospective Evaluation of Digital Peroral Cholangioscopy for the Detection of Residual Biliary Stones That Are Missed With Conventional ERCP: an Interim Analysis. *GIE*. May 2017 Volume 85, Issue 5, Supplement, Page AB618.
12. Ramchandani, M. et al. Single Operator Cholangioscopy for the evaluation and diagnosis of Indeterminate biliary strictures -Results from a Large Multi-national Registry. *DDW* 2017.
13. Ponchon et al. Value of endobiliary brush cytology and biopsies for the diagnosis of malignant bile duct stenosis: results of a prospective study. *GIE* 1995. 42(6): 565-72; Lee et al. Benign, dysplastic, or malignant – making sense of endoscopic bile duct brush cytology: results in 149 consecutive patients. *Am J Gastroenterol*. 1995 90(5)722-6; Ornellas et al. Comparison between endoscopic brush cytology performed before and after biliary stricture dilation for cancer detection. 2006 (41)1: 20-23; Jailwala et al. Triple-tissue sampling at ERCP in malignant biliary obstruction. *GIE* 2000 51(4) 383-390.; Draganov et al. Diagnostic accuracy of conventional and cholangioscopy-guided sampling of indeterminate biliary lesions at the time of ERCP: a prospective, long-term follow-up study, *GIE*, Vol. 75 (2); February 2012.

CAUTION: The law restricts these devices to sale by or on the order of a physician. Indications, contraindications, warnings and instructions for use can be found in the product labelling supplied with each device. Products shown for INFORMATION purposes only and may not be approved or for sale in certain countries. This material not intended for use in France. Rx Only.

The content of this PSST material is for Information Purposes only and not meant for product promotion or medical diagnostic. This information does not constitute medical or legal advice, and Boston Scientific makes no representation regarding the medical benefits included in this information. Boston Scientific strongly recommends that you consult with your physician on all matters pertaining to your health. Results from other case studies are not necessarily predictive of results in other cases. Results in other cases may vary.

All images owned by Boston Scientific. Unless otherwise noted.

All trademarks are the property of their respective owners.

Boston Scientific

Advancing science for life™

Boston Scientific Corporation
300 Boston Scientific Way
Marlborough, MA 01752-1234
www.bostonscientific.com/Gastro
www.EndoSuite.com

Ordering Information
1.888.272.1001

©2020 Boston Scientific Corporation
or its affiliates. All rights reserved.

ENDO-324201-AC