

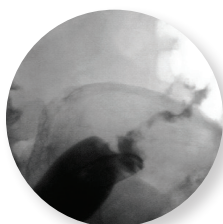
## Colonic Stent Placement as a Bridge-to-Surgery: Maximizing a Patient's Pre-operative Status



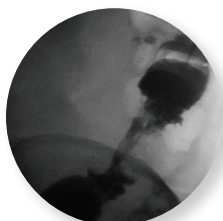
**Ryan Matsuo, MD**

Interventional Radiologist  
Queen's Medical Center  
Honolulu, HI

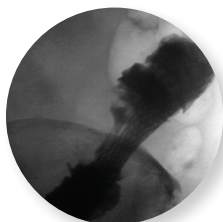
*"Placing the WallFlex for a malignant but operative stricture provided a bridge to surgery so we could maximize the patient's pre-operative status with chemoradiation therapy."*



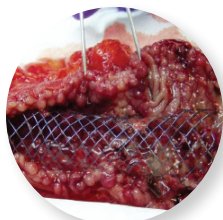
**Fluoroscopic image of obstruction in the sigmoid colon**



**Fluoroscopic image, 5 minutes post-deployment.**



**Fluoroscopic image of WallFlex Colonic Stent fully deployed and patent**



**Resected sigmoid colon with patent WallFlex Colonic Stent**

### Patient History and Assessment

A 79-year-old man presented to the ER with rectal bleeding, loose stools, and intermittent abdominal distention. His hemoglobin was noted to be 6.6. A CT scan showed liver metastasis and a sigmoid colon lesion. Endoscopy revealed an irregular circumferential mass, approximately 4cm in length, 27cm from the anal verge. Biopsies of the mass revealed adenocarcinoma.

Surgical resection was not considered at the time of initial assessment due to the patient's condition. Chemotherapy and radiation were prescribed and were to be started shortly. Elective surgical resection was to be scheduled for a later date if the patient's health improved. A colonic stent was prescribed to resolve the current obstruction and out of concern for impending obstruction related to tumor growth and/or edema from radiation. The patient was referred to an Interventional Radiologist for stent placement.

### Description of Procedure

With the patient in a prone position, a 5F Berenstein catheter was placed in the rectum. Under fluoroscopic guidance, the catheter traversed the sigmoid colon stricture with the aid of a Glidewire™ Guidewire. A 90mm WallFlex Colonic Stent, with a 25mm diameter body and 30mm diameter proximal flare was positioned across the stricture on the 230cm delivery system. Because of the length of the delivery system, a 450cm Jagwire™ Guidewire was used to guide the stent. The technologist deployed the stent under direct visualization to ensure the stent remained in the correct position throughout deployment.

### Summary of Clinical Experience

The patient tolerated the short procedure well. Within a week his rectal bleeding improved and he subsequently started chemotherapy and radiation treatment. No obstructive symptoms occurred. A follow-up CT scan, two months after stent placement, showed a decrease in the size of the liver metastasis with the colonic stent widely patent. The patient underwent surgery two months later. The stent was patent.

**Boston Scientific**  
Advancing science for life™

Boston Scientific Corporation  
One Boston Scientific Place  
Natick, MA 01760-1537  
[www.bostonscientific.com/endo-resources](http://www.bostonscientific.com/endo-resources)

**Ordering Information**  
**1.888.272.1001**

©2025 Boston Scientific Corporation or its affiliates. All rights reserved. ENDO-178302-AA

CE 0344 WallFlex™ Colonic Stent

Results from case studies are not predictive of results in other cases. Results in other cases may vary. Jagwire and WallFlex are registered or unregistered trademarks of Boston Scientific Corporation or its affiliates. All other trademarks are property of their respective owners.

Indications, Contraindications, Warnings and Instructions for Use can be found in the product labeling supplied with each device.

**CAUTION:** The law restricts these devices to sale by or on the order of a physician. Indications, contraindications, warnings, and instructions for use can be found in the product labelling supplied with each device or at [www.IFU-BSCI.com](http://www.IFU-BSCI.com). Products shown for INFORMATION purposes only and may not be approved or for sale in certain countries. This material not intended for use in France.