

Speciality guidewires



NovaGold™

- The Triton™ alloy core provides stiffness for loading and rail support to facilitate device exchange
- 6cm gold atraumatic tip provides flexibility and visibility under fluoroscopy
- The NovaGold guidewire’s steerability enables maneuverability in tortuous anatomy
- Tip is shapeable from straight to angled to accommodate physician preference

NovaGold™	Order Number	O.D. (in.) / (mm)	Length (cm)	Tip Style	Units
	M00552001	0.018 / 0.46	260	Straight (shapeable)	box 2
	M00552011	0.018 / 0.46	480	Straight (shapeable)	box 2



NaviPro™

- 100% hydrophilic guidewire designed for cannulation and smooth passage through tortuous anatomy
- Available in two tip configurations (straight or angled) to facilitate cannulation of the biliary ducts
- Offers a one-to-one torque response for selective cannulation
- Available in three outer diameter sizes: 0.018" (0.46mm), 0.025" (0.64mm) and 0.035" (0.89mm)

NaviPro™	Order Number	O.D. (in.) / (mm)	Length (cm)	Tip Style	Units
	M00556191	0.018 / 0.46	260	Angled	box 5
	M00556181	0.018 / 0.46	260	Straight	box 5
	M00556211	0.025 / 0.64	260	Angled	box 5
	M00556201	0.025 / 0.64	260	Straight	box 5
	M00556231	0.035 / 0.89	260	Angled	box 5
	M00556221	0.035 / 0.89	260	Straight	box 5
	M00556251	0.035 / 0.89	260	Angled Stiff	box 5
	M00556241	0.035 / 0.89	260	Straight Stiff	box 5

Ordering information

Hydra Jagwire™	Order Number	Shaft O.D. (in.) / (mm)	Jag Tip O.D.* (in.) / (mm)	Dream Tip O.D.* (in.) / (mm)	Shaft Design	Length (cm)	Tip Style*
	M00556001	0.035 / 0.89	0.032 / 0.81	0.032 / 0.81	Standard	260	Straight
	M00556011	0.035 / 0.89	0.032 / 0.81	0.032 / 0.81	Standard	260	Angled
	M00556021	0.035 / 0.89	0.032 / 0.81	0.032 / 0.81	Stiff	260	Straight
	M00556031	0.035 / 0.89	0.032 / 0.81	0.032 / 0.81	Stiff	260	Angled
	M00556041	0.035 / 0.89	0.032 / 0.81	0.032 / 0.81	Standard	450	Straight
	M00556051	0.035 / 0.89	0.032 / 0.81	0.032 / 0.81	Standard	450	Angled
	M00556061	0.035 / 0.89	0.032 / 0.81	0.032 / 0.81	Stiff	450	Straight
	M00556071	0.035 / 0.89	0.032 / 0.81	0.032 / 0.81	Stiff	450	Angled
*For Hydra Jagwire Angled, Dream Tip is angled and Jagwire tip is straight. For Hydra Jagwire Straight both tips are straight. Box of 2 units							

Dreamwire™	Order Number	Shaft O.D. (in.) / (mm)	Dream Tip O.D.* (in.) / (mm)	Shaft Design	Length (cm)	Tip Style
	M00556101	0.035 / 0.89	0.032 / 0.81	Standard	260	Straight
	M00556111	0.035 / 0.89	0.032 / 0.81	Standard	260	Angled
	M00556121	0.035 / 0.89	0.032 / 0.81	Stiff	260	Straight
	M00556131	0.035 / 0.89	0.032 / 0.81	Stiff	260	Angled
	M00556141	0.035 / 0.89	0.032 / 0.81	Standard	450	Straight
	M00556151	0.035 / 0.89	0.032 / 0.81	Standard	450	Angled
	M00556161	0.035 / 0.89	0.032 / 0.81	Stiff	450	Straight
	M00556171	0.035 / 0.89	0.032 / 0.81	Stiff	450	Angled
Box of 2 units						

Jagwire™	Order Number	Shaft O.D. (in.) / (mm)	Tip O.D.* (in.) / (mm)	Shaft Design	Length (cm)	Tip Style
	M00556561	0.025 / 0.64	0.021 / 0.51	Standard	450	Straight
NEW	M00556511	0.025 / 0.64	0.021 / 0.51	Standard	450	Angled
NEW	M00556521	0.025 / 0.64	0.021 / 0.51	Stiff	450	Straight
NEW	M00556531	0.025 / 0.64	0.021 / 0.51	Stiff	450	Angled
	M00556581	0.035 / 0.89	0.028 / 0.71	Standard	450	Straight
	M00556591	0.035 / 0.89	0.028 / 0.71	Standard	450	Angled
	M00556601	0.035 / 0.89	0.028 / 0.71	Stiff	450	Straight
	M00556611	0.035 / 0.89	0.028 / 0.71	Stiff	450	Angled
	M00556481	0.025 / 0.64	0.021 / 0.51	Stiff	260	Straight
	M00556491	0.025 / 0.64	0.021 / 0.51	Stiff	260	Angled
	M00556461	0.025 / 0.64	0.021 / 0.51	Standard	260	Straight
	M00557641	0.035 / 0.89	0.028 / 0.71	Standard	260	Straight
	M00557651	0.035 / 0.89	0.028 / 0.71	Standard	260	Angled
	M00557661	0.035 / 0.89	0.028 / 0.71	Stiff	260	Straight
	M00557671	0.035 / 0.89	0.028 / 0.71	Stiff	260	Angled
	M00556841	0.035 / 0.89	0.028 / 0.71	Standard Extendable	260	Straight
	M00556851	0.035 / 0.89	0.028 / 0.71	Standard Extendable	260	Angled
	M00556861	0.035 / 0.89	0.028 / 0.71	Stiff Extendable	260	Straight
	M00556871	0.035 / 0.89	0.028 / 0.71	Stiff Extendable	260	Angled
Box of 2 units						

Wallstent™ Super Stiff Guidewire	Order Number	Shaft O.D. (in.) / (mm)	Tip O.D. (in.) / (mm)	Length (cm)	Tip Style
	H965180011	0.035 / 0.89	0.035 / 0.89	500	Straight
Box of 5 units					

Contact your local Boston Scientific representative for more information or visit www.bostonscientific.eu/gastroenterology



Boston Scientific
Advancing science for life™

www.bostonscientific.eu

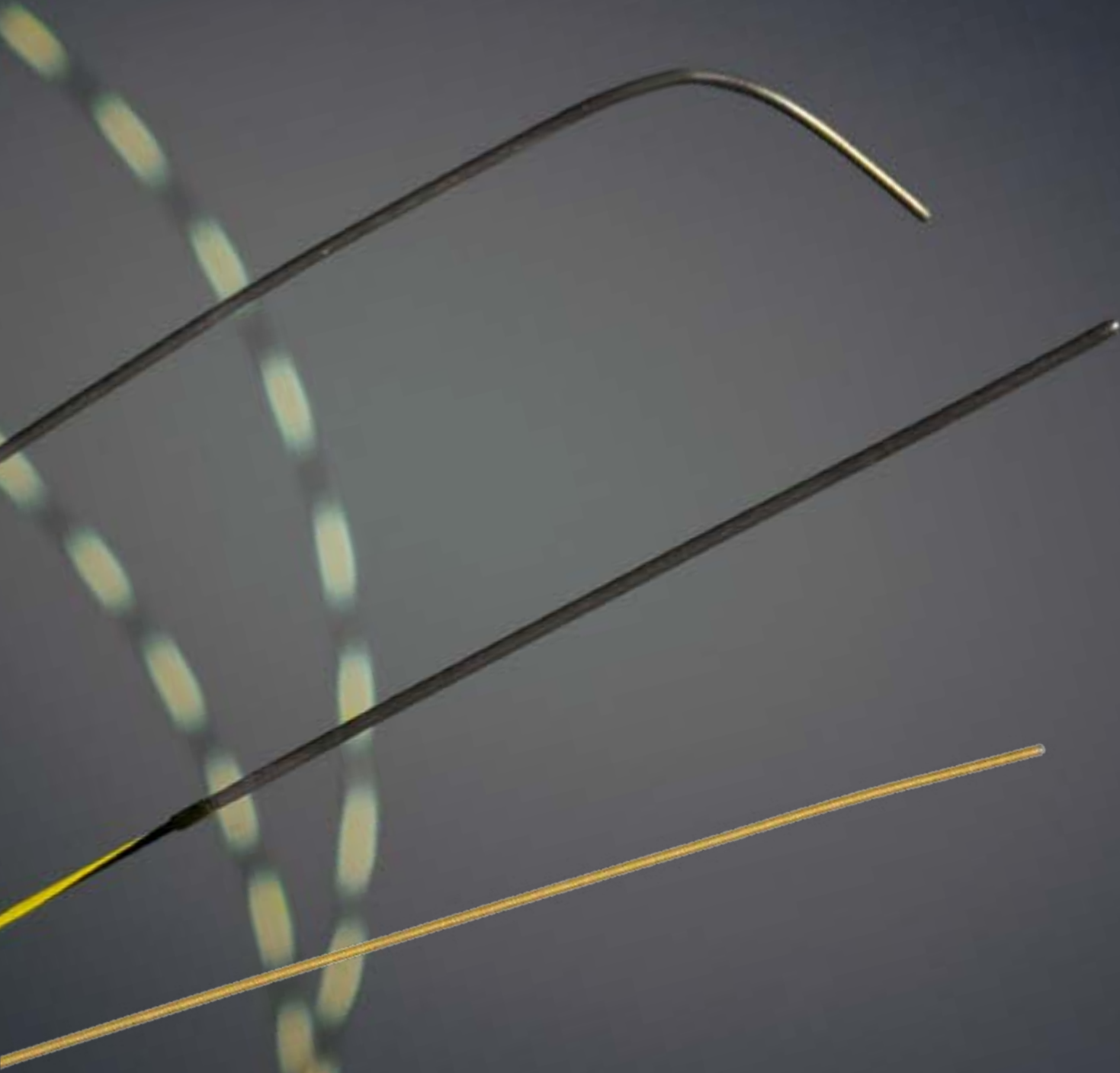
*Values on data file for the measurements.
All cited trademarks are the property of their respective owners.
CAUTION: Law restricts these devices to sale by or on the order of a physician. Indications, contraindications, warnings and instructions for use can be found in the product labelling supplied with each device. Information for the use only in countries with applicable health authority product registrations.
ENDO-395501-AB October2016. Printed in the UK by Gosling.

© 2017 Boston Scientific Corporation or its affiliates. All rights reserved.
DINEND2357EB

Pancreaticobiliary guidewires

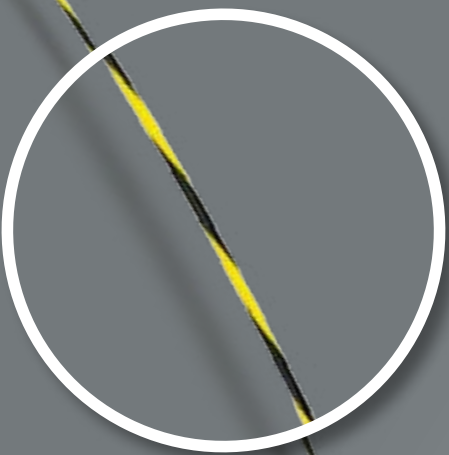
Boston Scientific
Advancing science for life™

A complete portfolio of
guidewires from 0.018” to 0.035”



Hydra Jagwire™ • Dreamwire™ • Jagwire™ • NovaGold™ • NaviPro™ • Wallstent™

Our range of guidewires are all suitable for use in the treatment of pancreaticobiliary disease with a choice of coatings, tips and sizes to meet specific needs.



Striped jacket helps to visualise wire movement during device exchange

- Kink-resistant shaft promotes control during advancement and support during device exchange
- Non-slip proximal surface
- Black and yellow pattern provides clear endoscopic visualisation

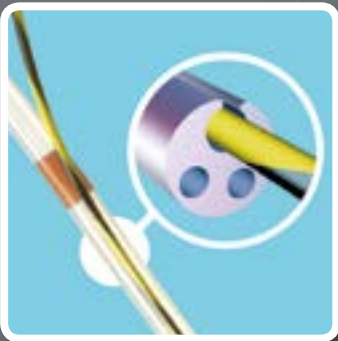
Endo-Glide™ and Hydropass™ coatings

- For smooth tacking through anatomy and stricture

Insulated jacket*

- Guidewire may be left in place during sphincterotomy

RX Compatible

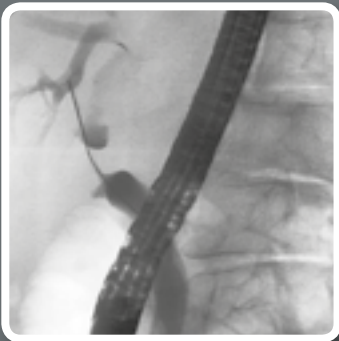


RX Locking Device

Guidewire locks in place to maintain access and may be unlocked at any time during the procedure



Independent Jagwire Control



Tungsten-filled Tip

Aids in fluoroscopic visualization

Your choice of guidewire options – angled or straight tip

Hydra Jagwire™

A 10cm hydrophilic Dream Tip™ on one end and a 5cm Jagwire on the other end. The 10cm tip is designed to form an Alpha loop to facilitate passage through a tight stricture.

Dreamwire™

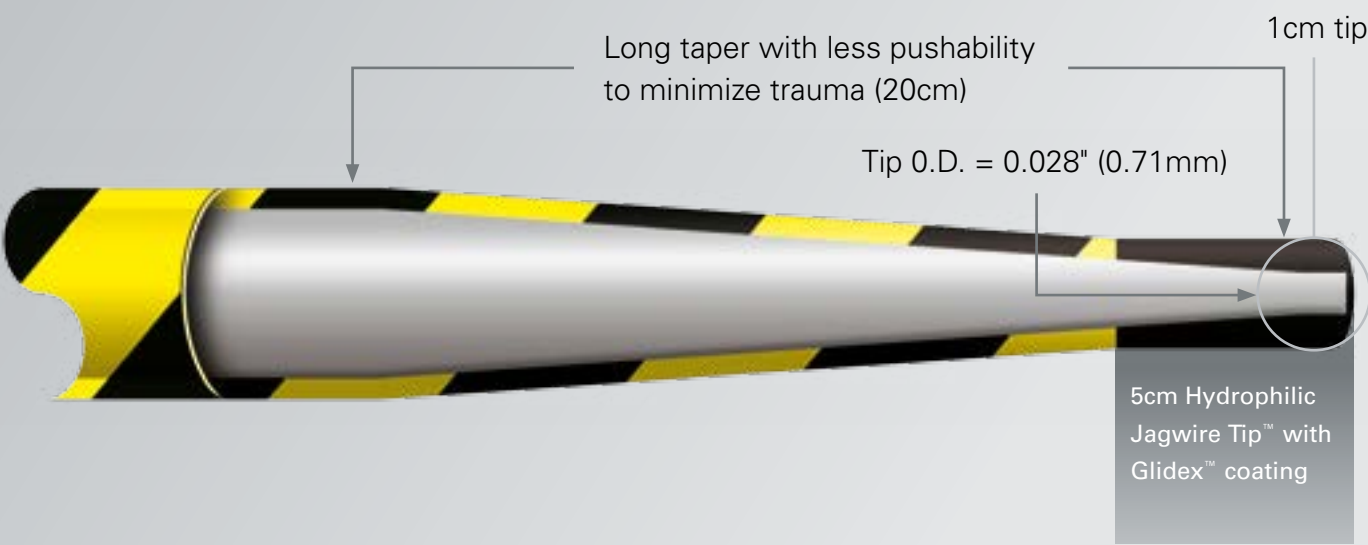
10cm hydrophilic Dream Tip™ End with HydroPass™ coating designed to form an Alpha loop to facilitate passage through a tight stricture.

Jagwire™

A hydrophilic distal 5cm tip helps facilitate selective cannulation and negotiation of difficult anatomy.

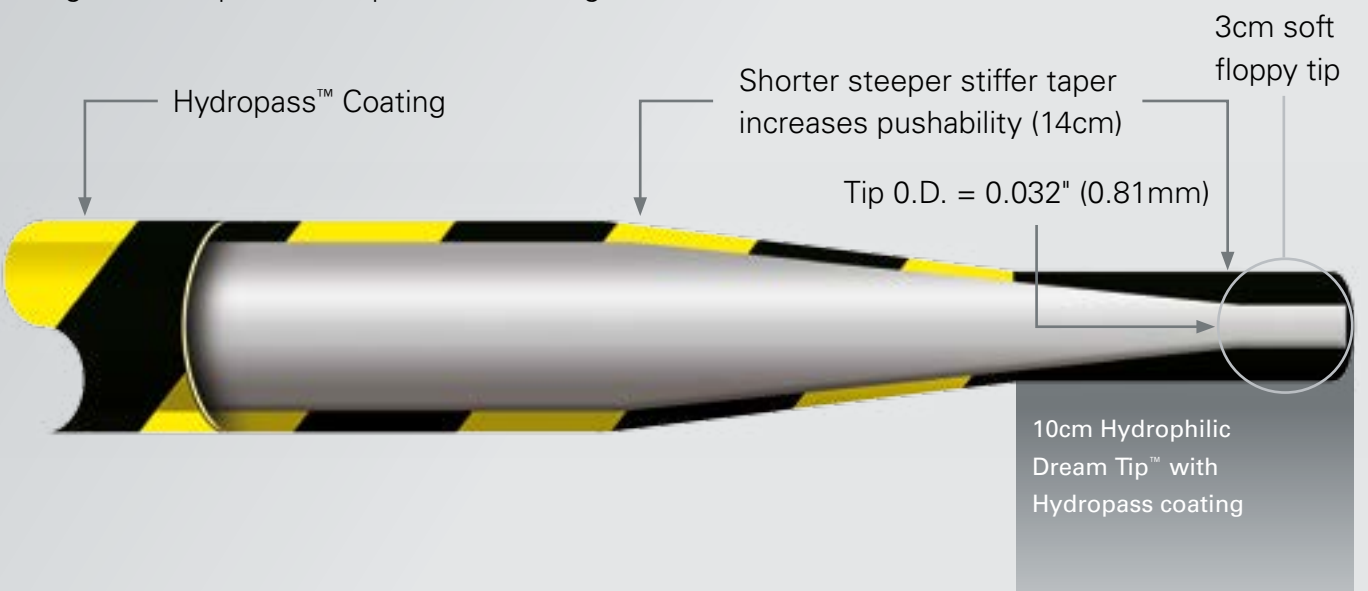
Inside the wires...

Jagwire™ 0.035" Tip Properties



Dream Tip™ Properties

Designed to help wire to flip forward through strictures



* Refer to Directions for Use for complete information.

Data on file Boston Scientific Corp.