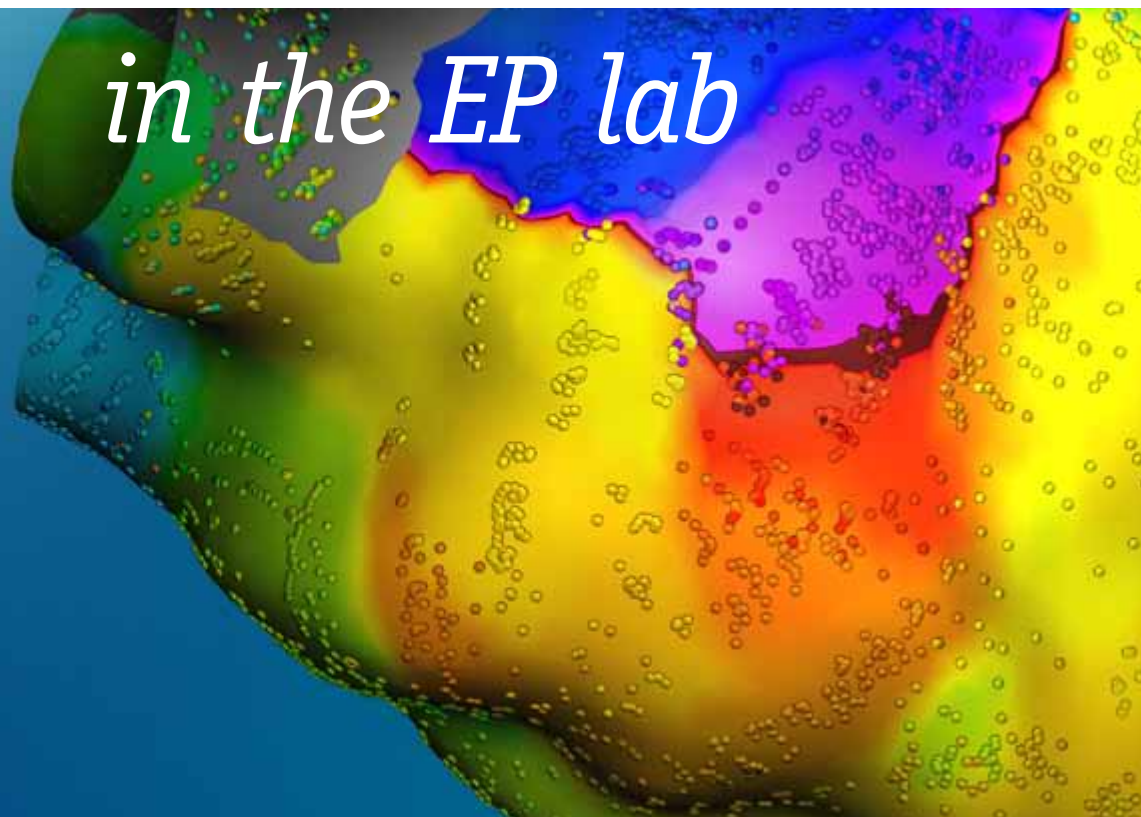


CLARITY

in the EP lab

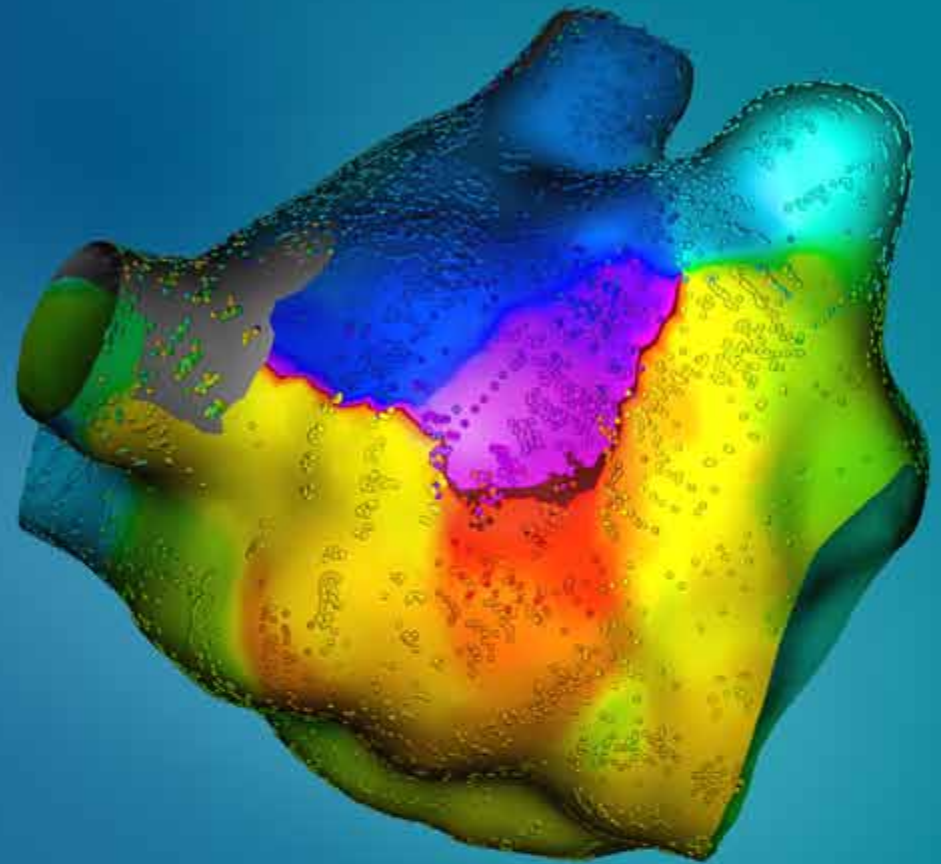


Activation map image courtesy of Elad Anter, MD, Beth Israel Deaconess Medical Center, Boston, Mass.

Some innovations
are subtle shifts.

**OURS ARE
GAME CHANGERS –**

especially in complex cases.

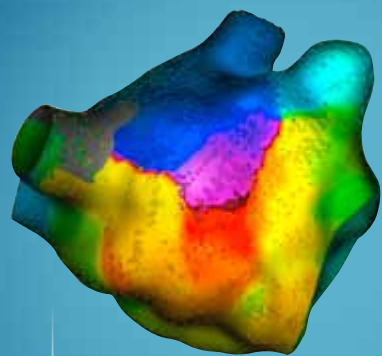


Electrophysiology Portfolio



OPTIMIZED FOR CLARITY

Engineered with clinically meaningful innovations, our portfolio equips electrophysiologists with unprecedented visualization in even the most complex ablation procedures. Its four key products work in tandem to enable precise and accurate localization of electrograms of interest, so you can deliver more effective, efficient lesions. Ultimately, the ability to see during procedures gives you the ability to treat – so seeing more can lead to better patient outcomes and improved long-term success rates.



RHYTHMIA™
MAPPING SYSTEM

INTELLAMAP ORION™

MAPPING CATHETER



INTELLATIP MIFI™
ABLATION TECHNOLOGIES

LABSYSTEM™ PRO

RECORDING SYSTEM



RHYTHMIA™

MAPPING SYSTEM

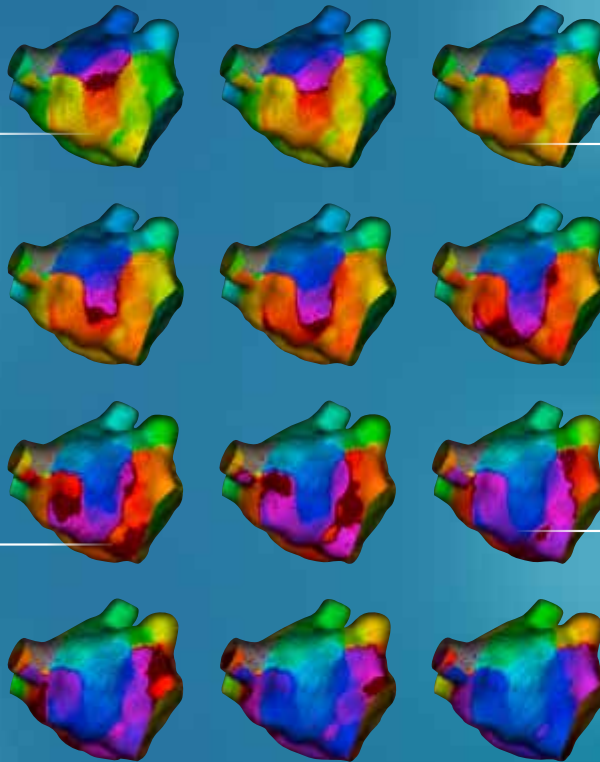


6x *faster*
MAPPING¹

Get exponentially more data with RHYTHMIA's Continuous Mapping™.

25x *the*
DATA POINTS¹

Experience the best visualization of any mapping system on the market and see detail you've never seen before.



10x *lower noise*
THRESHOLD²

Reveal signals that lead to more accurate and complete mapping of arrhythmogenic substrate, especially in scarred or heavily diseased chambers.

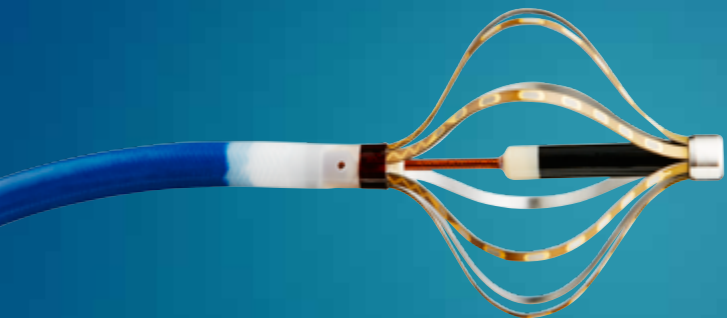
99.98%
annotation ACCURACY³

Be confident that you're properly representing the circuit's activation sequence.

CLARITY FOR COMPLEX PROCEDURES

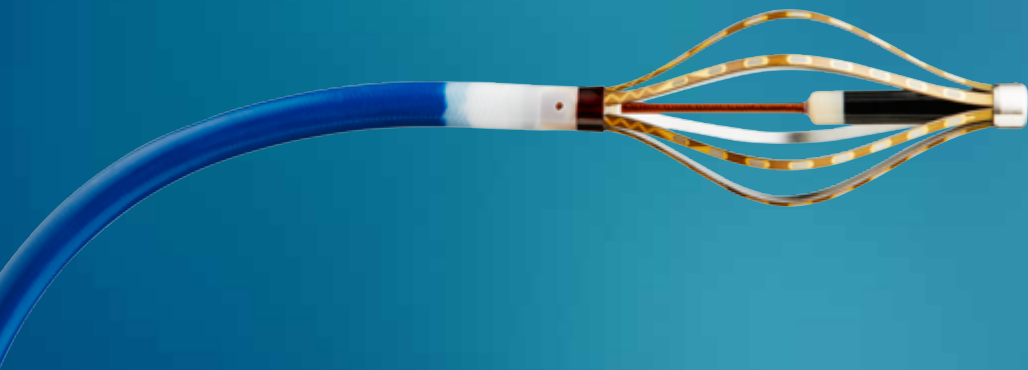
INTELLAMAP ORION™

MAPPING CATHETER



0.4mm²
printed ELECTRODES

Get sharper, better-quality signals for precise localization of arrhythmias.



64 *printed*
ELECTRODES

Collect more data more rapidly.



8x *smaller*
ELECTRODES⁴

Maximize contact and minimize far field. See the clearest map possible.

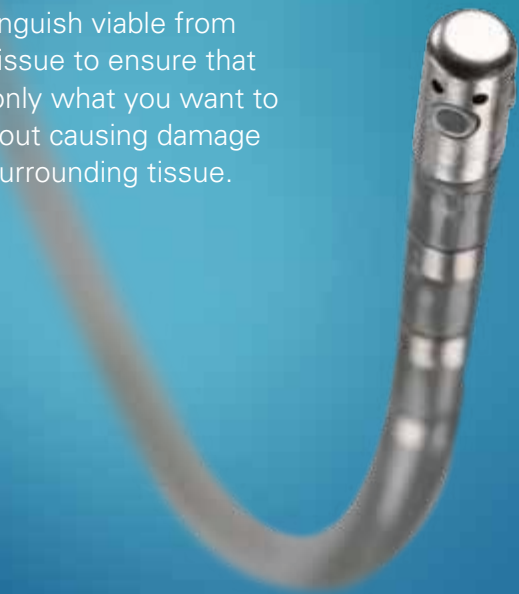
CLARITY FOR PRECISE LOCALIZATION

INTELLATIP MIFI™ AND INTELLANAV™ OI

ABLATION TECHNOLOGIES

3 *mini* ELECTRODES

Clearly distinguish viable from non-viable tissue to ensure that you ablate only what you want to ablate, without causing damage to healthy surrounding tissue.



INTELLATIP MIFI™ OPEN-IRRIGATED
MULTI-DIMENSIONAL ABLATION TECHNOLOGY CATHETER*



INTELLANAV™ OPEN-IRRIGATED
ABLATION CATHETER

RHYTHMIA™ Mapping System Navigation
and Magnetic Tracking Accuracy

1mm *electrode* DIAMETER

Localize precisely and accurately
with the highest-resolution
ablation catheter on the market.

INTELLATIP MIFI™ XP
ABLATION CATHETER



CLARITY AND ACCURACY FOR BETTER PATIENT OUTCOME

LABSYSTEM™ PRO

RECORDING SYSTEM



Optimal **NOISE REJECTION**

Get more accurate information with the greatest level of noise reduction and signal clarity on the market.⁵

4 *advanced* **ANALYSIS TOOLS**

Designed to enable a faster, more precise diagnosis for complex arrhythmias.

Universal, fully **CUSTOMIZABLE USER INTERFACE**

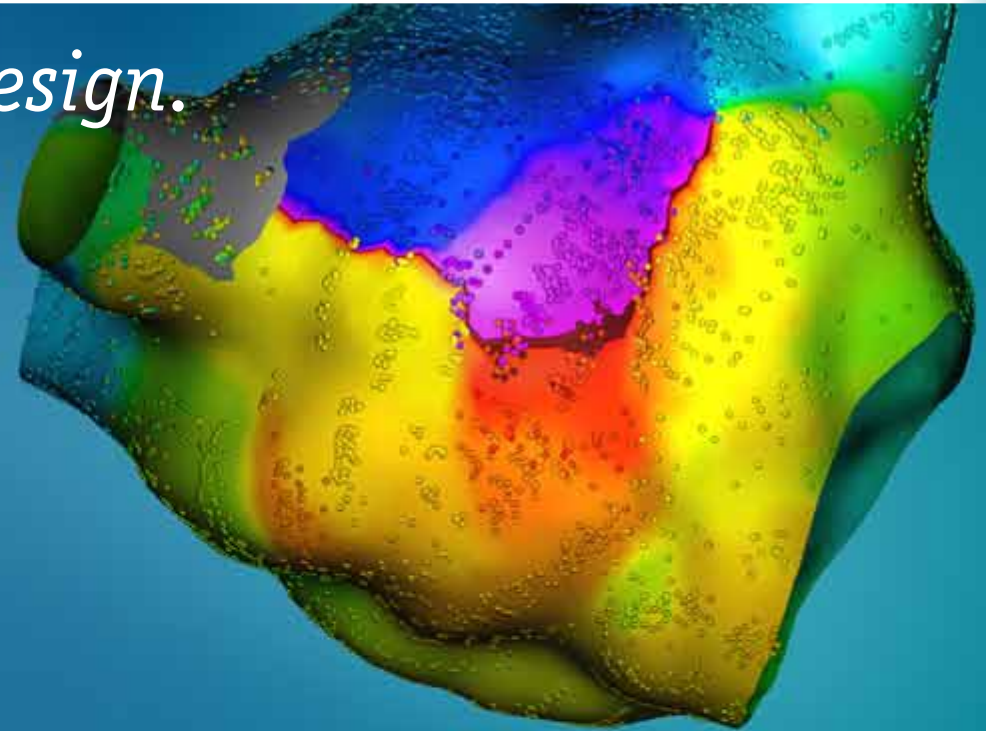
Experience greater flexibility with the option of a review workstation with remote access.

CLARITY FOR FASTER DIAGNOSES

For complexity,

CLARITY IS PARAMOUNT.

The difference is in the design.



1. Ptaszek L, Chalhoub F, Perna F, Beinart R, Barrett C, Danik S, Heist EK, Ruskin J, Mansour M. Rapid Acquisition of High-Resolution Electroanatomical Mapping Using a Novel Multi-Electrode Mapping System. *J Interv Card Electrophysiol*. 2012 Nov 22.
2. Lockwood D, Nakagawa H, Peyton MD, Edgerton JR, Scherlag BJ, Sivaram CA, Po SS, Beckman KJ, Abedin M, Jackman WM. Linear Left Atrial Lesions in Minimally Invasive Surgical Ablation of Persistent Atrial Fibrillation: Techniques for Assessing Conduction Block Across Surgical Lesions, *Heart Rhythm*, Volume 6, Issue 12, Supplement, December 2009, Pages S50-S63, ISSN 1547-5271. <http://dx.doi.org/10.1016/j.hrthm.2009.09.010>.
3. Mantziari L, Butcher C, Kontogeorgis A, Panikker S, Roy K, Markides V, Wong T. Utility of a Novel Rapid High-Resolution Mapping System in the Catheter Ablation of Arrhythmias: An Initial Human Experience of Mapping the Atria and the Left Ventricle. *JACC Clin Electrophysiol*. Volume 1, Issue 5, October 2015, Pages 411-420. <http://dx.doi.org/10.1016/j.jacep.2015.06.002>
4. Calculation utilizes labeled electrode sizes of commercially available and commonly used electrophysiology mapping catheters.
5. Data on file from *WorkMate™ Claris™ System Instructions for Use and CardioLab EP Recording System Master Trainer Guide*.

All cited trademarks are the property of their respective owners. CAUTION: The law restricts these devices to sale by or on the order of a physician. Indications, contraindications, warnings and instructions for use can be found in the product labeling supplied with each device. Information for the use only in countries with applicable health authority product registrations. Information not intended for distribution in France.

EP-384914-AB JUL2016 Printed in Germany by medicalvision.

**Boston
Scientific**
Advancing science for life™

www.bostonscientific.eu

© 2016 Boston Scientific Corporation
or its affiliates. All rights reserved.