

# AVVIGO™

## Guidance System II



### A NEW ERA IN EVERY LAB

The AVVIGO Guidance System II offers the game-changing performance of the COMET™ II Pressure Guidewire along with high-definition IVUS using the OPTICROSS™ HD Imaging Catheter, all in a flexible platform.



**Boston  
Scientific**  
Advancing science for life™

CAUTION: The law restricts these devices to sale by or on the order of a physician. Indications, contraindications, warnings, and instructions for use can be found in the product labelling supplied with each device or at [www.IEU-BSCI.com](http://www.IEU-BSCI.com). Products shown for INFORMATION purposes only and may not be approved or for sale in certain countries. This material not intended for use in France.

IC-1363001-AA Printed in Germany by medicalvision.

[www.bostonscientific.com/PCI-Guidance](http://www.bostonscientific.com/PCI-Guidance)

© 2022 Boston Scientific Corporation  
or its affiliates. All rights reserved.  
DINCAR2798EA



## AVVIGO Guidance System II Mobile Platform with Tablet A streamlined multi-modality guidance system platform.



### High-Performance Product Portfolio

A full suite of high-definition IVUS imaging catheters and a true workhorse pressure guidewire offer best-in-class deliverability.

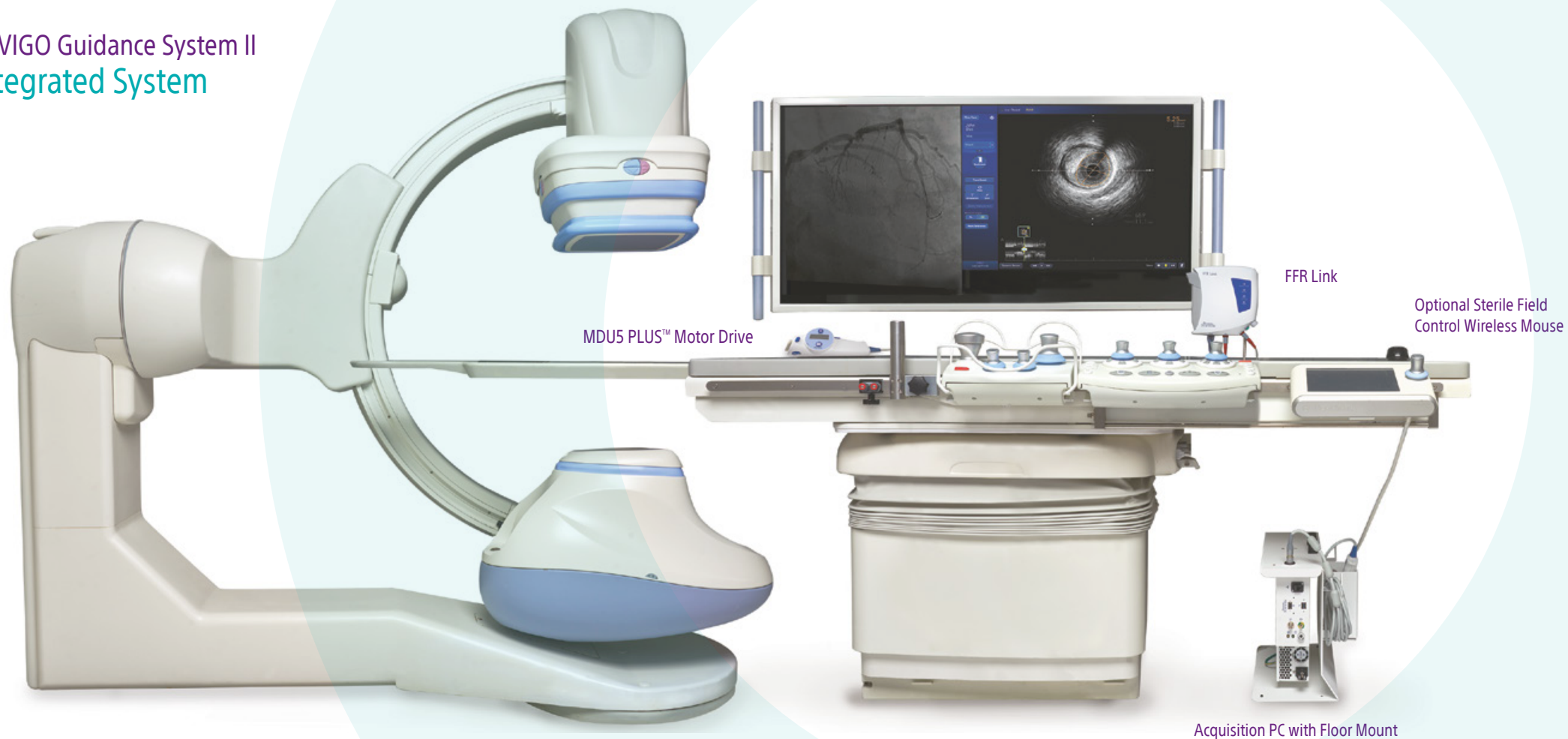
### Intuitive Software

User friendly software features an easy workflow and specialized tools for IVUS and coronary physiology.

### Flexible Integration

Fully integrated and mobile options available to fit seamlessly in any lab.

## AVVIGO Guidance System II Integrated System



MDU5 PLUS™ Motor Drive

FFR Link

Optional Sterile Field  
Control Wireless Mouse

Acquisition PC with Floor Mount

## COMET™ II Pressure Guidewire Total Confidence in Your Treatment Decision.



### Deliverability

- Shapeable and atraumatic Asahi tip
- Precision cut body for 1:1 torque

### Accuracy

- Optical technology for exceptional drift performance and reliable signal connection

### Usability

- Optimized rail support for device delivery
- Free-spinning, quick-release handle
- One wire for the entire procedure

## OPTICROSS™ HD 60 MHz Coronary Imaging Catheter Visualize better outcomes with IVUS.



### Advanced 60 Mhz Composite Transducer

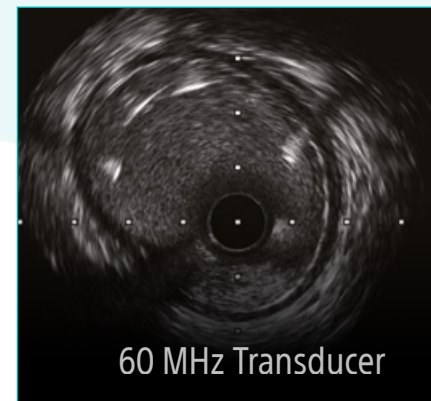
- Precise image with 6 mm depth for small to large vessel assessment

### Exceptional Deliverability

- Well-balanced engineering design

### 5F And 6F Compatible

- Assist in more cases



60 MHz Transducer



# Advanced Software | Features

## DFR



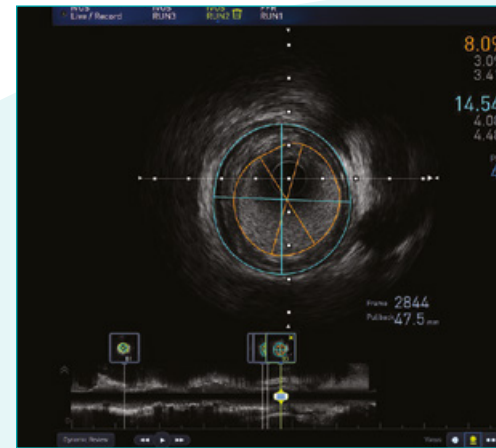
DFR calculates a diastolic portion of the cardiac cycle at rest. DFR uses a cutoff of 0.89 and is numerically equivalent to iFR. The DFR window uses two criteria:  $P_d < \text{mean } P_a$  and down-sloping Pa. No ECG signal is required.

## smFFR



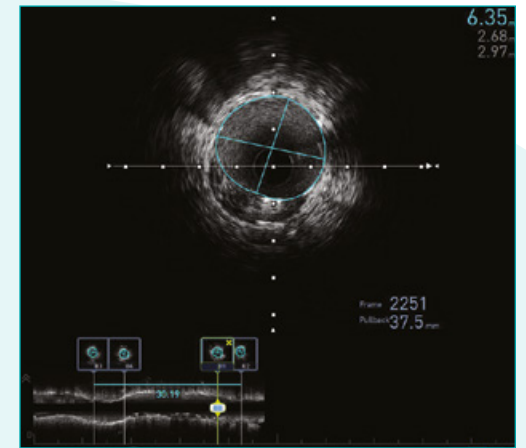
smFFR automatically excludes certain artifacts (e.g., flushing, opening AO stopcock or hemostasis valve, pulling out guidewire during recording) to latch to the true FFR value.

## Trace Assist™



An aid to automatically draw lumen and vessel borders.

## LongView™



IVUS LongView provides a user the ability to guide PCI with length measurements and visualization of bifurcations.

## Ordering Information

The AVVIGO Guidance System II provides digital IVUS imaging for coronary, peripheral and intracardiac applications. FFR and DFR modalities are indicated to provide blood pressure gradient across coronary lesions of patient that undergo endovascular diagnostic and treatment procedures.

Description	Ref/Catalog Number	GTIN
AVVIGO GUID SYS II MOBILE EU Cart (including MDU5+)	BUN30AVVIGO2MOB	00191506023386
AVVIGO GUID SYS II MOBILE EU (without MDU5+)	H749 009883C 0	00191506015299
AVVIGO GUID SYS II MOBILE EU Refurbished (without MDU5+)	H749 009883CR 0	00191506015305
AVVIGO GUID SYS II INTEGR EU (including MDU5+)	BUN30AVVIGO2INT	00191506023393
AVVIGO GUID SYS II INTEGR EU (without MDU5+)	H749 009883I 0	00191506015329
AVVIGO GUID SYS II INTEGR EU Refurbished (without MDU5+)	H749 009883IR 0	00191506015336
FFR Link	H749 555100 0	08714729890010
MDU5+ Motor Drive	H749 MDU5PLUS 0	08714729842279
COMET II Pressure Guidewire	H749 3935931 0	08714729960164
OPTICROSS HD Imaging Catheter	H749 3935202 0	08714729960751
OPTICROSS 6 HD Imaging Catheter	H749 3935406 0	08714729960799
OPTICROSS Imaging Catheter	H749 51812 0	08714729841531
OPTICROSS 6 Imaging Catheter	H749 518126 0	08714729904779
OPTICROSS 18	H749 393270018 0	08714729904748
OPTICROSS 35	H749 393280135 0	08714729997153
ULTRA ICE™ PLUS Catheter	M004 9910 0	08714729904373
Automatic Pullback Sled	H749 A7020 0	08714729339328
MDU5+ Sterile Bag	H749 MDU5PLUSBAG 0	08714729842255

