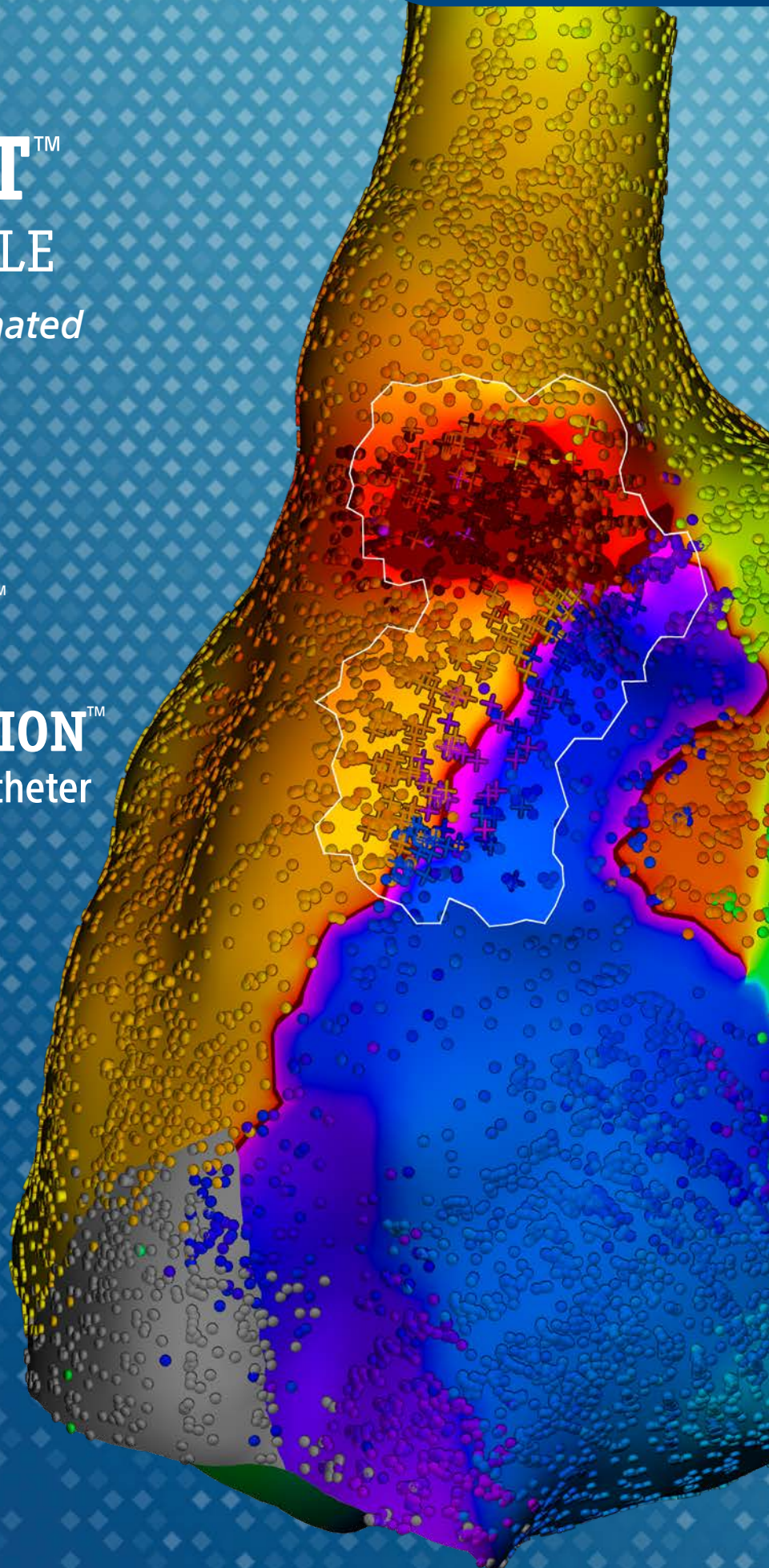


# LUMIPOINT™ SOFTWARE MODULE

*The Next Level of Automated  
ultra-HD mapping*

Available Exclusively on the  
**RHYTHMIA HDx™**  
Mapping System and  
**INTELLAMAP ORION™**  
High Density Mapping Catheter

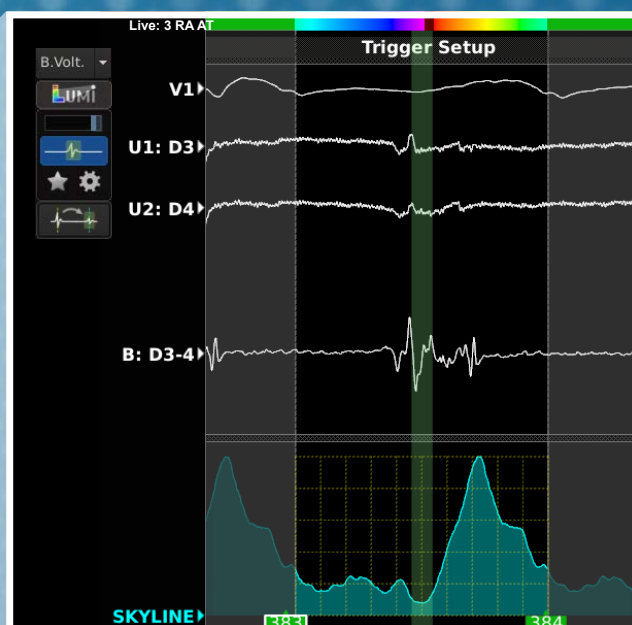
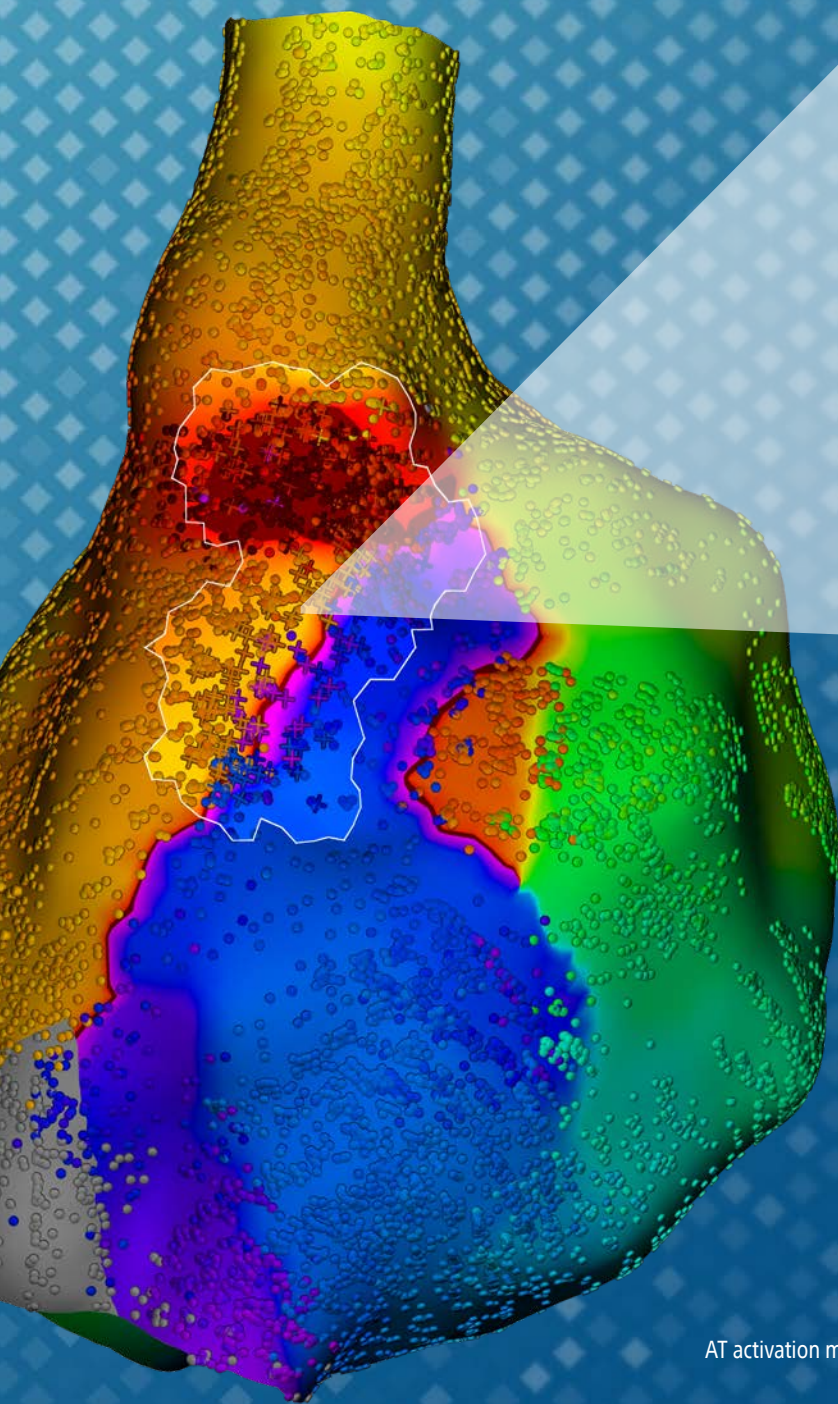


# LOCALIZE SLOW AND NARROW CONDUCTION WITH SKYLINE™

SKYLINE™ presents a novel view of full chamber activation, displaying the amount of surface area activating at any time during the tachycardia cycle.

SKYLINE aids in ultra-HD map interpretation

- Automatically highlight critical areas of the map
- Rapidly identify potential critical isthmuses
- Easily distinguish earliest sites of activation

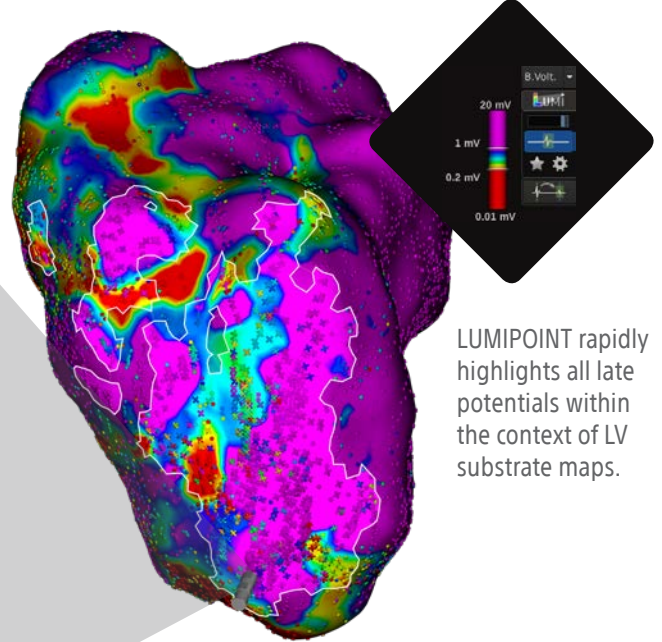
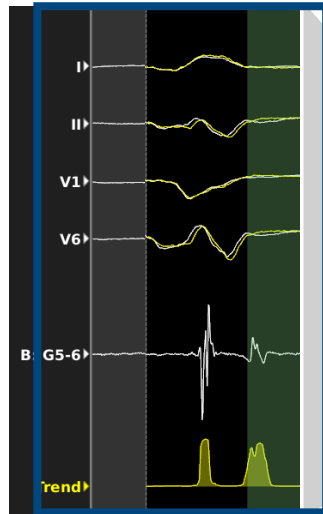


SKYLINE rapidly highlights fractionated electrograms within the area of slow, narrow conduction, revealing the critical isthmus of this Macro-reentrant Atrial Tachycardia.

# LUMIPOINT AUTOMATES IDENTIFICATION OF

Automatically highlight electrograms of interest within the context of activation and voltage maps

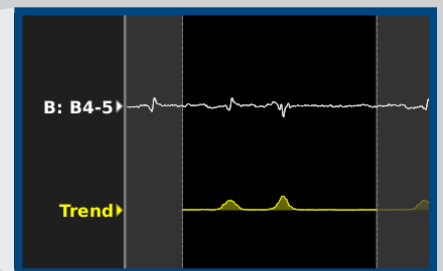
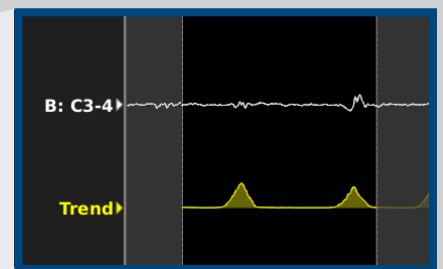
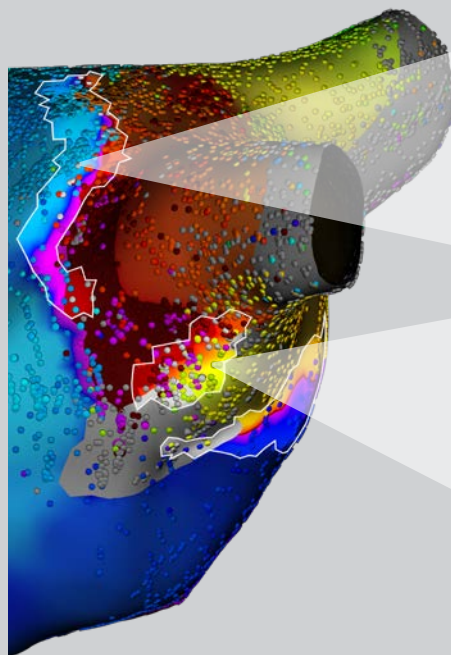
LUMIPOINT Activation Window  
LUMIPOINT Propagation



LUMIPOINT rapidly highlights all late potentials within the context of LV substrate maps.

Rapidly highlight lines of block

LUMIPOINT  
Split Activation



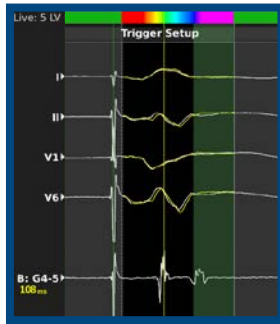
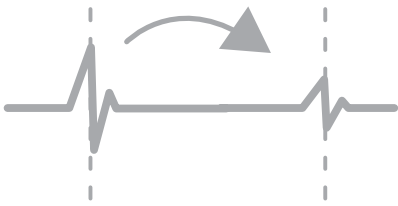
Redo Atrial Fibrillation  
LUMIPOINT Split Activation identifies line of block in previous PVI Ablation.

# LUMIPOINT FACILITATES OPTIMIZATION OF

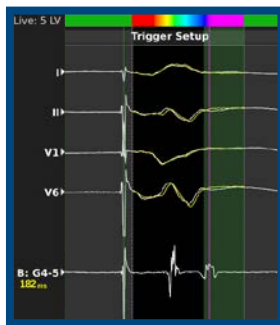
# CLINICALLY RELEVANT AREAS OF INTEREST

## Customize activation maps with rapid electrogram reannotation

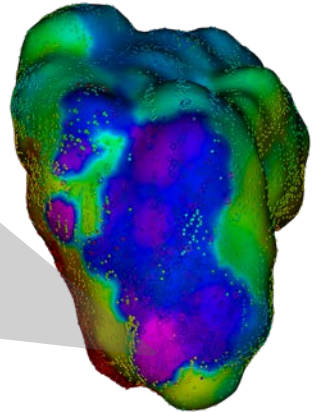
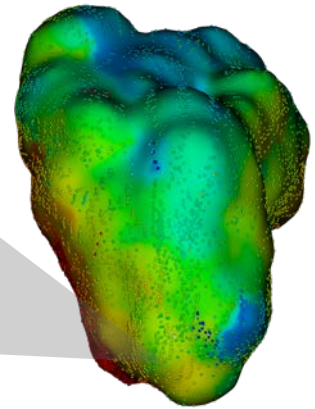
### LUMIPOINT Group Reannotation



Initial Activation Map of LV substrate.

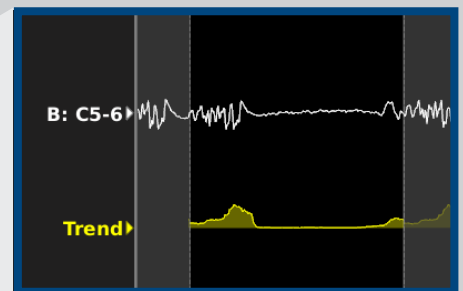
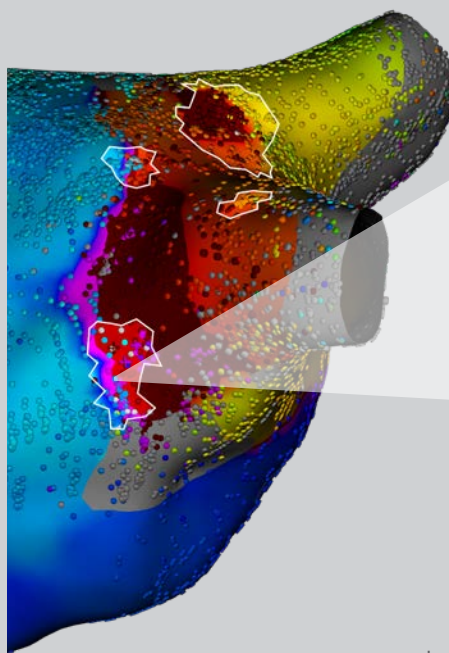


LUMIPOINT Group Reannotation facilitates the annotation of late potentials instead of far-field systolic potentials.



## and fractionated signals

### LUMIPOINT Complex Activation



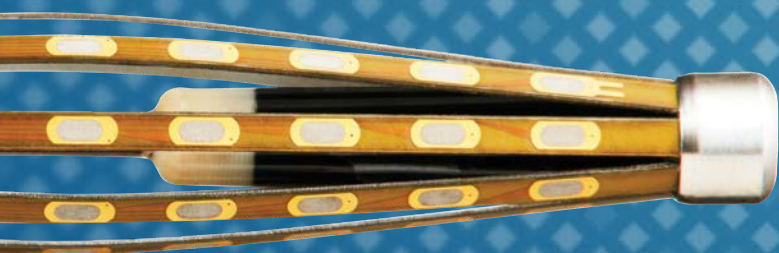
Redo Atrial Fibrillation  
LUMIPOINT Complex Activation confirms location of gap in previous PVI Ablation.

Images provided courtesy of Prof. Jais, LIRYC Institute, Bordeaux

# ANY WORKFLOW, FOR ANY PROCEDURE

# THE FIRST EVER SUITE OF TOOLS TO STREAMLINE INTERPRETATION OF ULTRA-HD MAPPING DATA

Rhythmia HDx™ sets the standard with its ultra-HD 3D maps, providing a level of clarity that enables accurate visualization of even the most complex activation patterns. With the LUMIPOINT™ Software Module you can take that volume and quality of data to the next level to accelerate clinical decisions and enable minimal ablation.



To learn more visit [www.bostonscientific.eu/lumipoint](http://www.bostonscientific.eu/lumipoint)

**Boston  
Scientific**  
Advancing science for life™

All cited trademarks are the property of their respective owners. CAUTION: The law restricts these devices to sale by or on the order of a physician. Indications, contraindications, warnings and instructions for use can be found in the product labeling supplied with each device. Information for the use only in countries with applicable health authority product registrations.

EP-611203-AA 2019 Printed in Germany by medicalvision.

[www.bostonscientific.eu](http://www.bostonscientific.eu)

© 2019 Boston Scientific Corporation or its affiliates. All rights reserved.  
DINEP2296EA