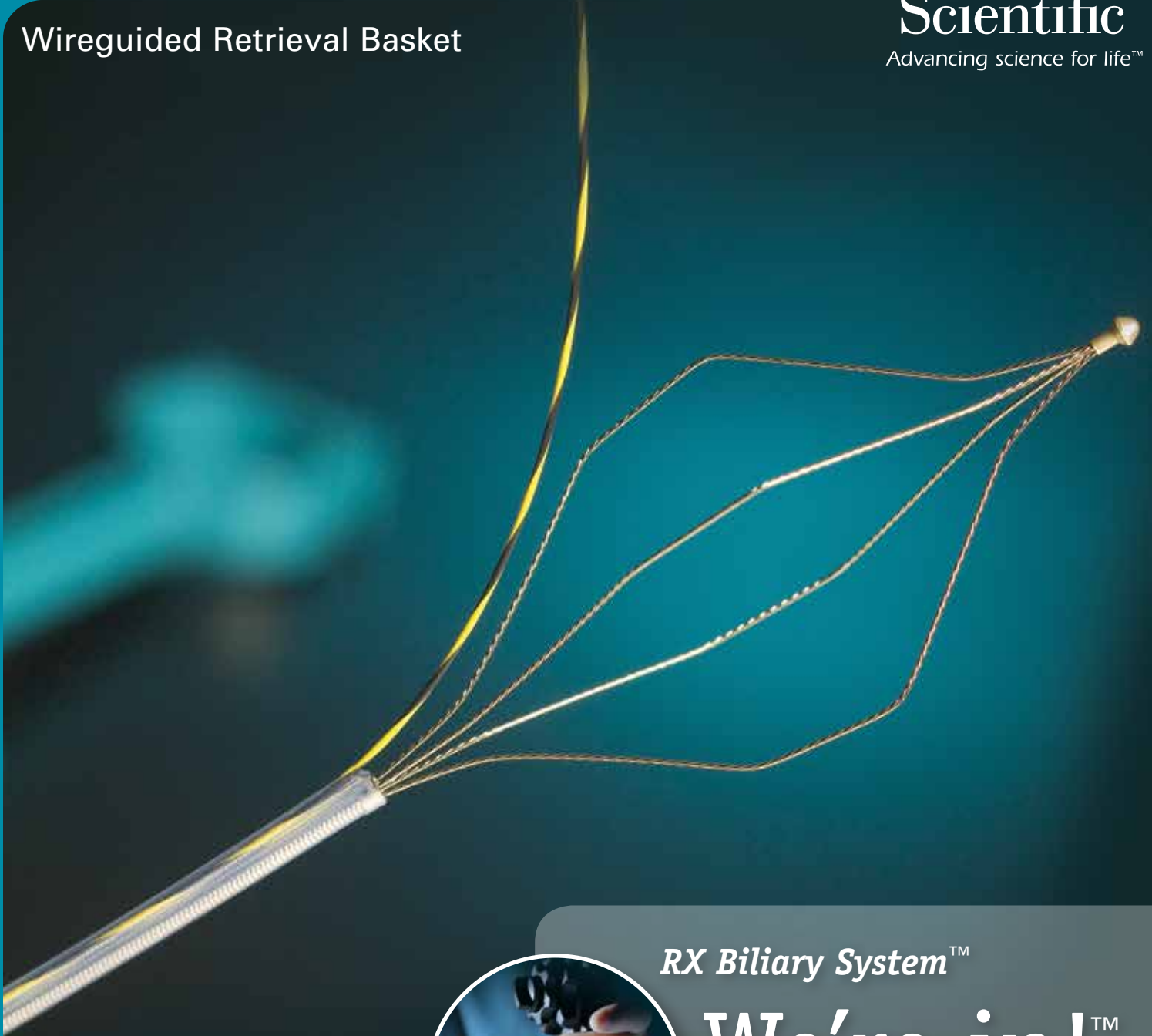


Trapezoid™ RX

Wireguided Retrieval Basket

**Boston
Scientific**
Advancing science for life™



RX Biliary System™

We're in!™

Trapezoid™ RX

Wireguided Retrieval Basket

The Trapezoid RX Wireguided Retrieval Basket

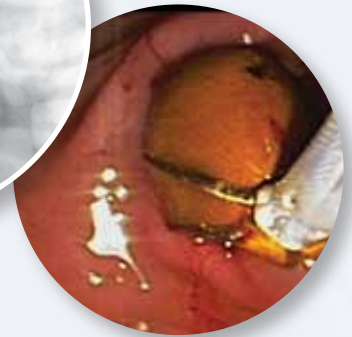
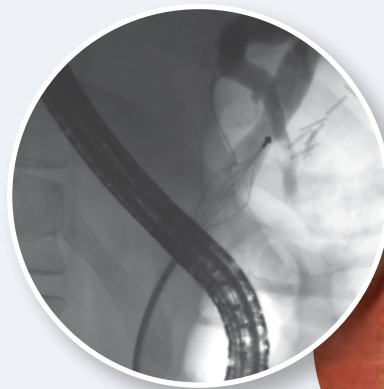
is designed for the crushing and removal of stones in the biliary duct. The Flexi-Stiff™ Catheter construction provides a flexible and sturdy catheter designed to bend with biliary anatomy while maintaining pushability. The metal alloy basket is designed to maintain basket symmetry even after difficult stone manipulation.

RX Biliary System™

We're in!™

The RX Biliary System helps put the physician in control of the guidewire. Designed to facilitate access and control during ERCP, the system enables the physician to secure the guidewire to maintain access during exchanges — particularly helpful when working in tortuous anatomy — and provides a tactile feel while manipulating the guidewire.

Since its introduction, the RX Biliary System continues to provide utility with the development of new technologies and the continual improvement of devices for diagnostic and therapeutic ERCP.



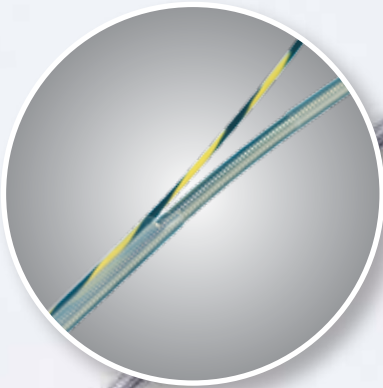
Tip Disengages

Tip disengages to facilitate basket removal if stone does not break, helping to reduce risk of basket impaction.



Mechanical Stone Crushing Option

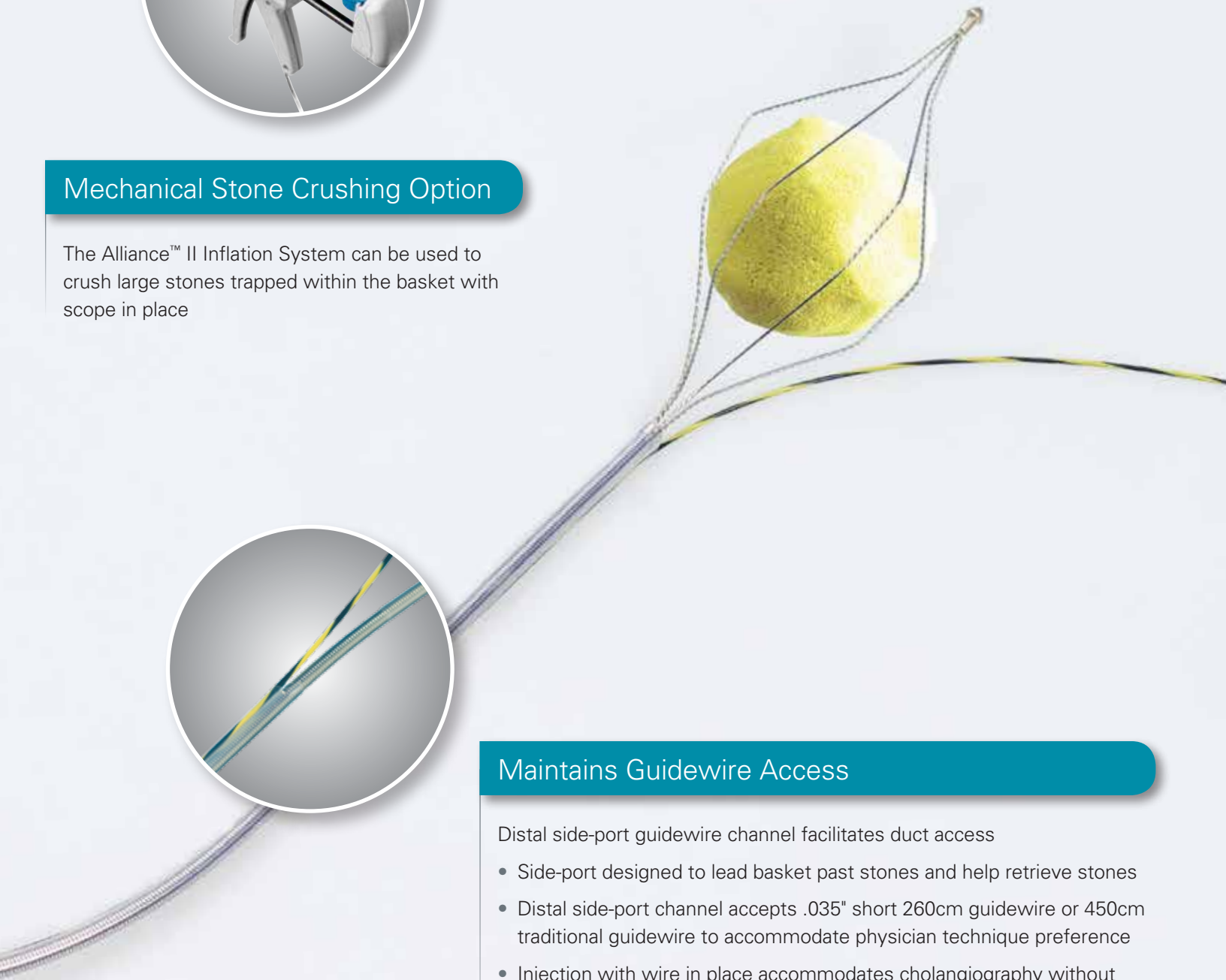
The Alliance™ II Inflation System can be used to crush large stones trapped within the basket with scope in place



Maintains Guidewire Access

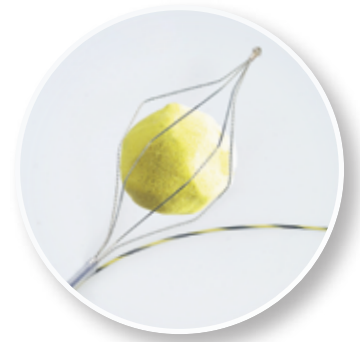
Distal side-port guidewire channel facilitates duct access

- Side-port designed to lead basket past stones and help retrieve stones
- Distal side-port channel accepts .035" short 260cm guidewire or 450cm traditional guidewire to accommodate physician technique preference
- Injection with wire in place accommodates cholangiography without device exchange
- The RX Locking Device facilitates multiple sweeps of the duct during stone retrieval by maintaining guidewire position
- Wire can be locked and unlocked at any time during the procedure



Trapezoid™ RX

Wireguided Retrieval Basket



Trapezoid RX Wireguided Retrieval Basket

| Order Number | GTIN | Description | Open Basket Diameter (cm) | Required Working Channel (mm) | Recommended Guidewire (in) | Packaging |
|--------------|----------------|--|---------------------------|-------------------------------|----------------------------|-----------|
| M00510860 | 08714729296379 | Trapezoid RX Wireguided Retrieval Basket | 1.5 | 3.2 | .035 | Each |
| M00510870 | 08714729296386 | Trapezoid RX Wireguided Retrieval Basket | 2.0 | 3.2 | .035 | Each |
| M00510880 | 08714729296393 | Trapezoid RX Wireguided Retrieval Basket | 2.5 | 3.2 | .035 | Each |
| M00510890 | 08714729296409 | Trapezoid RX Wireguided Retrieval Basket | 3.0 | 3.2 | .035 | Each |

*Recommended guidewire: .035" Hydra Jagwire™ Guidewire

Alliance™ II Inflation System

| Order Number | GTIN | Description | Packaging |
|--------------|----------------|-------------------------------------|-----------|
| M00550620 | 08714729283881 | Inflation Handle | Each |
| M00550601 | 08714729129332 | Single-Use Syringe / Gauge Assembly | Box 5 |

Boston Scientific

Advancing science for life™

Boston Scientific Corporation
300 Boston Scientific Way
Marlborough, MA 01752-1234
www.bostonscientific.com

Ordering Information
1.888.272.1001

©2015 Boston Scientific Corporation
or its affiliates. All rights reserved.

ENDO-333814-AA August 2015

All trademarks are the property of their respective owners.

Indications, Contraindications, Warnings and Instructions for Use can be found in the product labeling supplied with each device.

Caution: Federal (USA) law restricts this device to sale by or on the order of a physician.