

# Captivator™ COLD Single-use Snare

Boston  
Scientific  
Advancing science for life™

Round Out Your Treatment Options  
with Captivator™ COLD Snare



*Optimized for Cold Snaring*

About

Features

Cold Snare  
Polypectomy

Ordering



# The Captivator COLD Single-use Snare:

1

**Optimized for cold snare polypectomy** and designed for the effective resection of flat lesions and diminutive polyps.

2

**Builds on the strong clinical track record of Captivator II Snares** while offering a design optimized for cold snaring of diminutive polyps.

3

**Is part of a comprehensive detection to resection offering** of devices for biopsy, tissue resection and hemostasis.



About

Features

Cold Snare  
Polypectomy

Ordering





# Optimized for cold resection.



## Round Shape

- Designed for concentric resection and capture of small polyps.



## Thin Wire and Robust Sheath

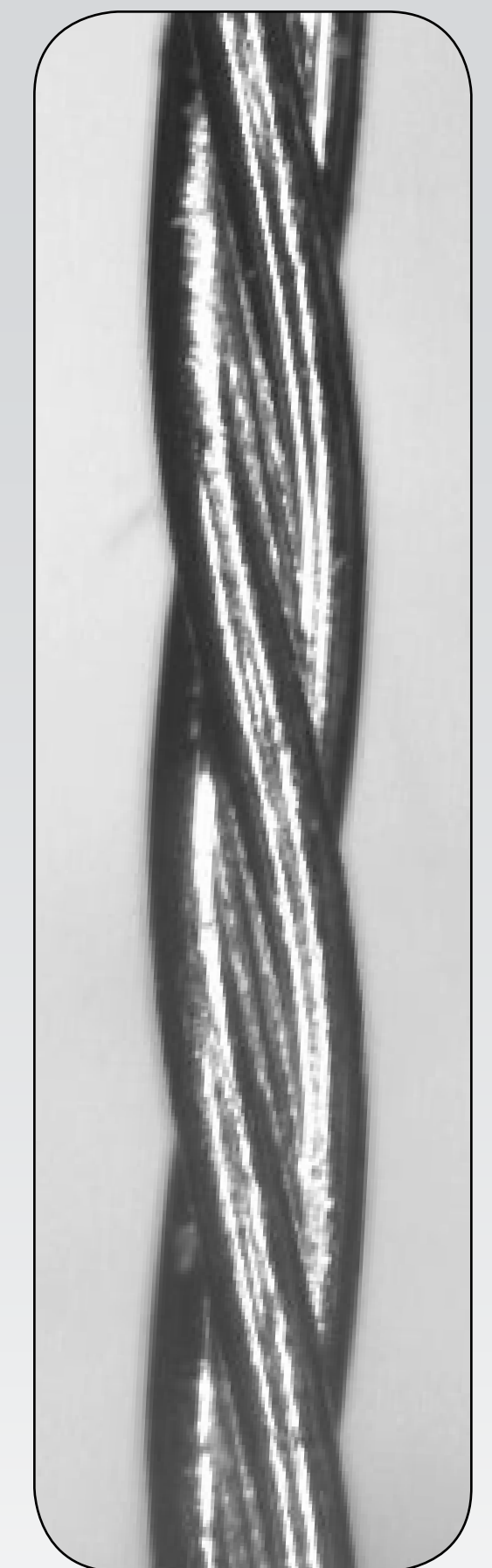
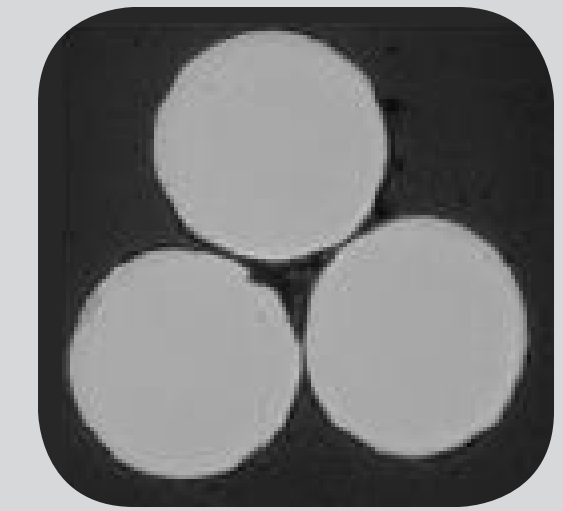
- Designed to enable a precise and clean resection of polyps.



## Reinforced Wire Stiffness and Loop Construction

- Designed to provide greater tissue traction and device control for the effective resection of flat lesions.
- Designed to facilitate improved physician control and visualization throughout polyp resection.

Images owned by Boston Scientific.



**Distinctive 1x3  
braid pattern wire  
construction**

Images are 22x magnification.

About

Features

Cold Snare  
Polypectomy

Ordering



# Cold Snare Polypectomy



## A DISCUSSION ON COLD SNARING: “The Cold Revolution in Polypectomy”

Presented by Douglas Rex, M.D.

Indiana University Health, Indianapolis, Indiana, U.S.

Watch it on [www.EndoSuite.com](http://www.EndoSuite.com).

About

Features

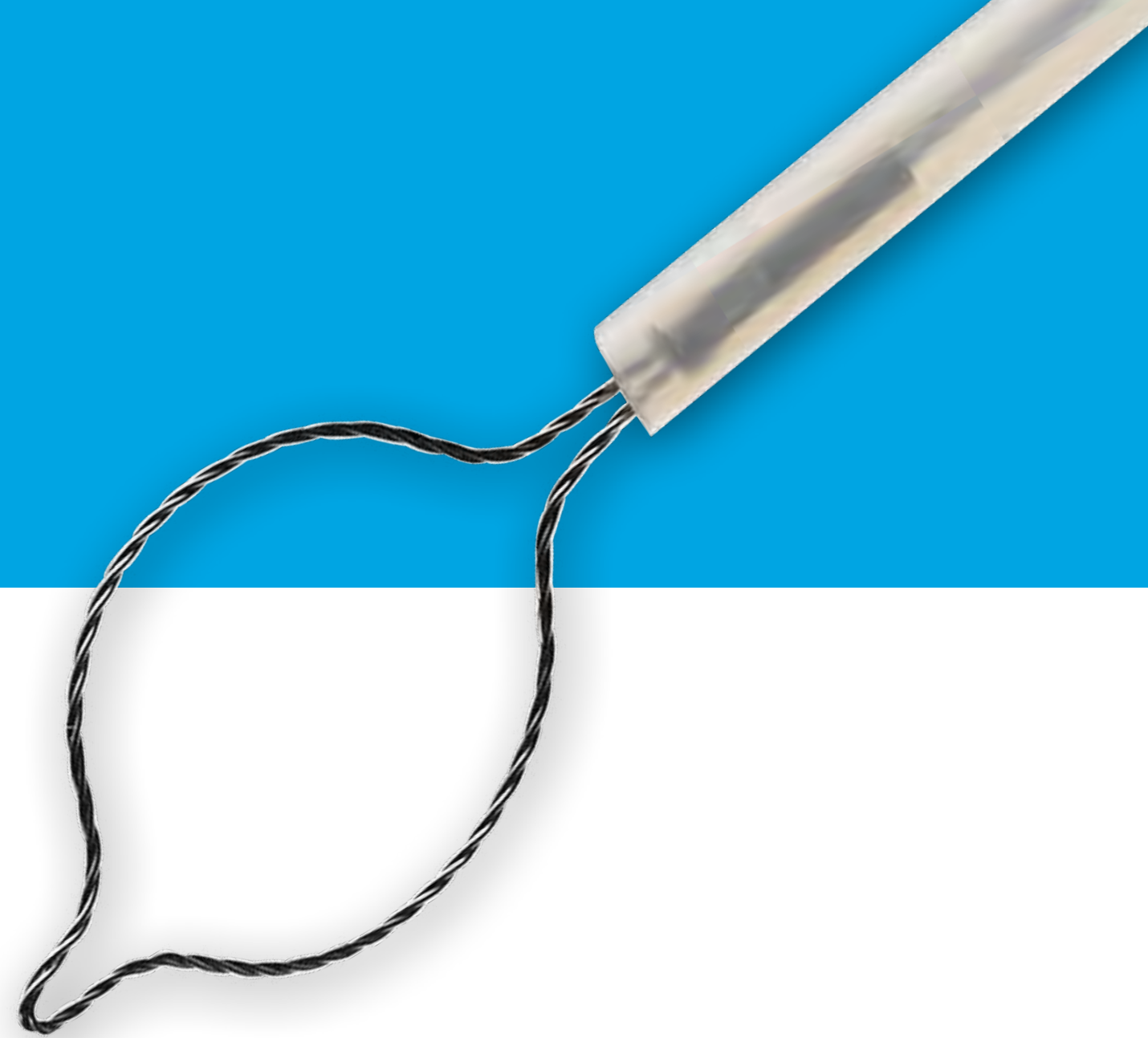
Cold Snare  
Polypectomy

Ordering



Captivator™ COLD Single-use Snare

Ordering Information



| Order Number | Description          | Loop Width (mm) | Sheath OD (mm) | Working Length (cm) | Min. Working Channel (mm) | Packaging |
|--------------|----------------------|-----------------|----------------|---------------------|---------------------------|-----------|
| M00561101    | 10mm Rounded – Stiff | 10mm            | 2.4            | 240                 | 2.8                       | Box 10    |
| M00561102    | 10mm Rounded – Stiff | 10mm            | 2.4            | 240                 | 2.8                       | Box 20    |
| M00561103    | 10mm Rounded – Stiff | 10mm            | 2.4            | 240                 | 2.8                       | Box 40    |





**Caution:** U.S. Federal law restricts this device to sale by or on the order of a physician.

**CAUTION:** The law restricts these devices to sale by or on the order of a physician. Indications, contraindications, warnings and instructions for use can be found in the product labelling supplied with each device. Information for use only in countries with applicable health authority registrations. Material not intended for use in France.

Images owned by Boston Scientific.

All trademarks are the property of their respective owners.

Boston Scientific Corporation  
300 Boston Scientific Way  
Marlborough, MA 01752-1234  
[www.bostonscientific.com](http://www.bostonscientific.com)

©2018 Boston Scientific Corporation  
or its affiliates. All rights reserved.

ENDO-555512-AA June 2018