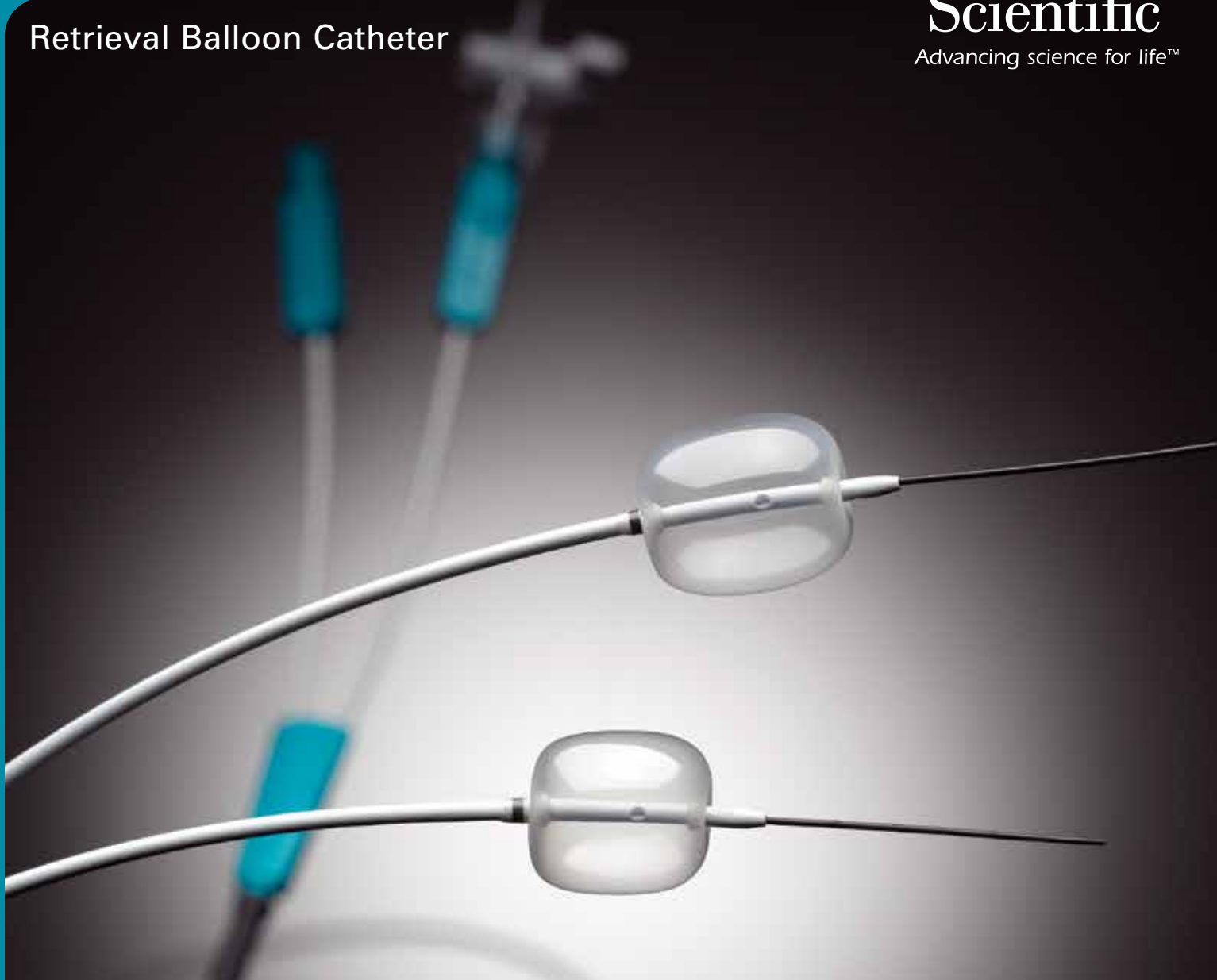


# Extractor™ Pro RX

Retrieval Balloon Catheter

**Boston  
Scientific**  
Advancing science for life™



*RX Biliary System™*

**We're in!™**

# Extractor™ Pro RX

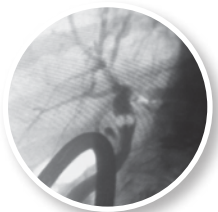
## Retrieval Balloon Catheter

The Extractor Pro RX Retrieval Balloon Catheter is indicated for use endoscopically to remove stones from the biliary system or to facilitate the injection of contrast medium while occluding the duct with the balloon.



### Enhanced Balloon Design

- Each of the three balloon sizes can be inflated to two distinct diameters: 9–12mm; 12–15mm; 15–18mm to better accommodate anatomical variations.
- A single balloon can be inflated to two distinct sizes if a different diameter is needed without having to exchange devices.
- **Squared shoulder** balloon is designed to facilitate stone removal.



Squared Shoulder Balloon

### Procedural Efficiency and Control

- The RX Biliary System locking device allows physicians to maintain guidewire position and helps facilitate multiple sweeps of the duct during stone retrieval.
- Option to front load or back load the guidewire.
- Injection-above or injection-below options to support physician preference and facilitate procedural needs.
- Designed for excellent injection flow rate.



RX Biliary System Procedural Efficiency and Control

RX Biliary System™

# We're in!™

The RX Biliary System helps put the physician in control of the guidewire. Using the RX Locking Device, the physician can secure the guidewire to maintain access while exchanging devices.

The RX Biliary System and its compatible devices offer a broad portfolio of products for pancreatico-biliary stone and stricture management.

## Extractor Pro RX Retrieval Balloon Catheter

Order Number	GTIN	Balloon Inflated O.D. (mm)	Injection	Catheter O.D. (Fr / mm)	Packaging
M00547000	08714729790266	9–12	Above	7–6 / 2.3-2.0	Each
M00547010	08714729790297	12–15	Above	7–6 / 2.3-2.0	Each
M00547020	08714729790310	15–18	Above	7–6 / 2.3-2.0	Each
M00547030	08714729790280	9–12	Below	7–6 / 2.3-2.0	Each
M00547040	08714729790273	12–15	Below	7–6 / 2.3-2.0	Each
M00547050	08714729790303	15–18	Below	7–6 / 2.3-2.0	Each

Recommended Boston Scientific 0.035 in guidewire.

All trademarks are the property of their respective owners.

Indications, Contraindications, Warnings and Instructions for Use can be found in the product labeling supplied with each device.

**Caution:** Federal (U.S.) law restricts this device to sale by or on the order of a physician.

## Boston Scientific

Advancing science for life™

Boston Scientific Corporation  
300 Boston Scientific Way  
Marlborough, MA 01752-1234  
www.bostonscientific.com

**Ordering Information**  
**1.888.272.1001**

©2016 Boston Scientific Corporation or its affiliates. All rights reserved.

ENDO-336502-AA May 2016