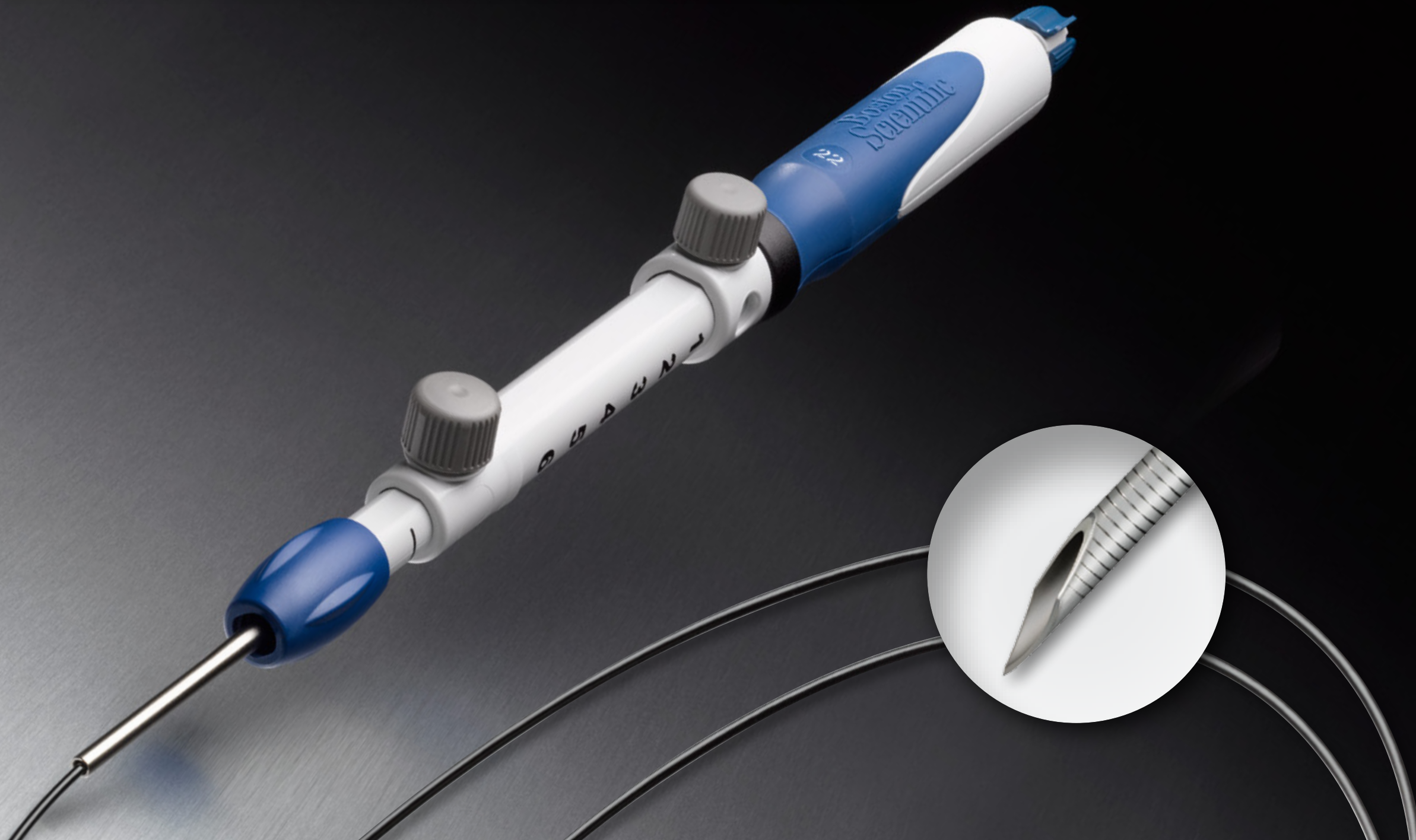


Expect™ Pulmonary

Endobronchial Ultrasound Transbronchial Aspiration Needle

**Boston
Scientific**
Advancing science for life™



About



Features



Testimonials



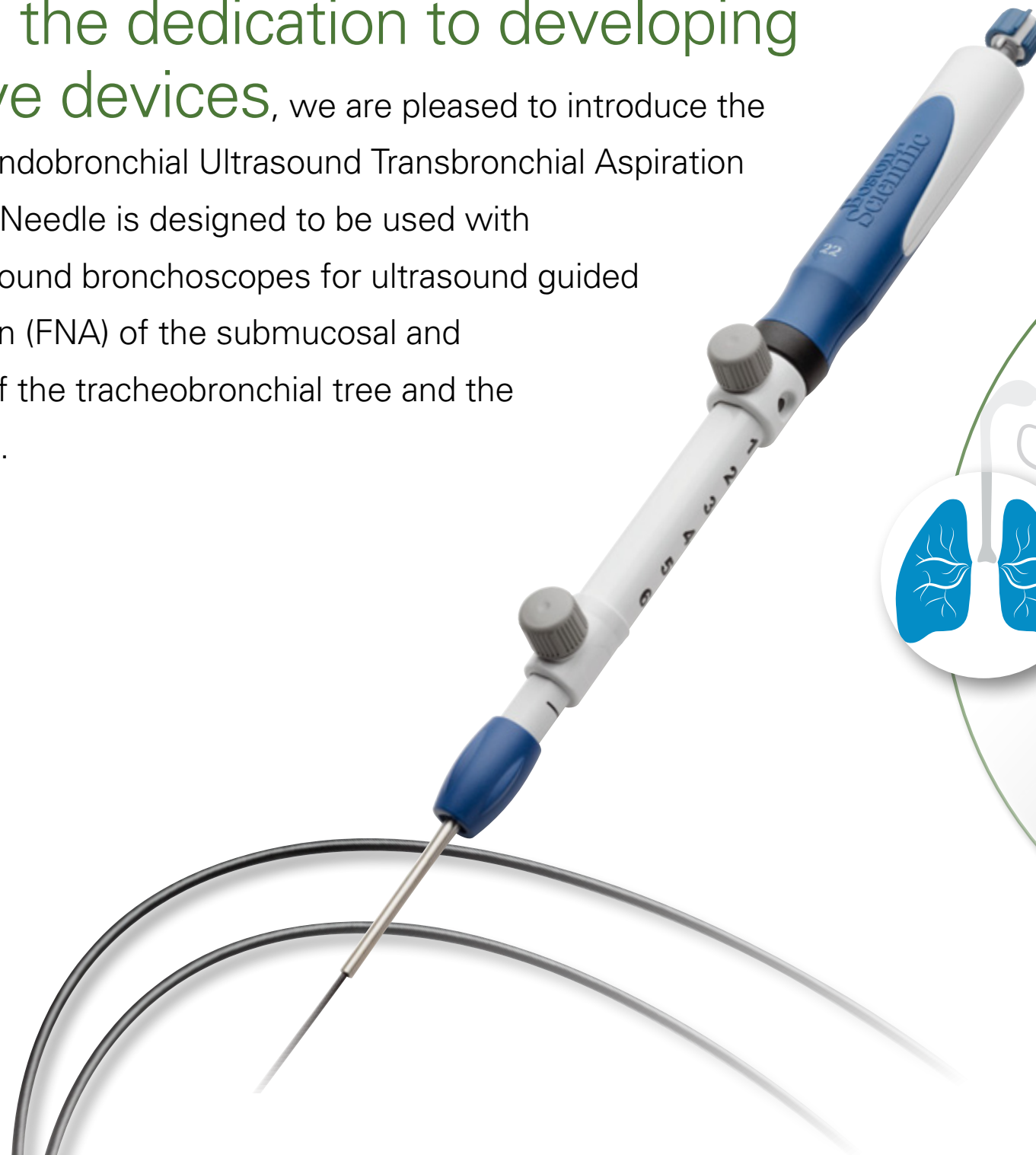
Ordering Information





Building on the dedication to developing less invasive devices,

we are pleased to introduce the Expect Pulmonary Endobronchial Ultrasound Transbronchial Aspiration Needle. The Expect Needle is designed to be used with endobronchial ultrasound bronchoscopes for ultrasound guided fine needle aspiration (FNA) of the submucosal and extramural lesions of the tracheobronchial tree and the gastrointestinal tract.



Lung cancer screening programs have shown a 20% reduction in mortality.*

As guidelines for lung cancer screening continue to evolve, the number of bronchoscopies performed is expected to rise. Built on proven technology, the Expect Pulmonary Needle provides physicians with a durable and reliable method to diagnose and stage lung cancer.

* N Engl. J Med 2011; 365: 395-409. Page 405.



Durability

Cobalt chromium needle provides benefits over some stainless steel alloys including greater needle hardness and excellent tensile properties to deliver*:

- **Superior** needle penetration*
- **Improved** pushability and kink resistance*
- **Increased resistance** to needle damage or deformation after multiple passes*
- **Thin wall of needle** aids in flexibility while maximizing inner diameter for improved sample collection



Pass 1



Pass 18

*Catheter and Specialty Needle Alloys, an abstract from Materials & Processes for Medical Devices Conference & Exposition, Minneapolis, MN, August 10-12, 2009. This study compared a cobalt-chromium alloy with nanoflex and 304 stainless steels. Bench test results may not necessarily be indicative of clinical performance.

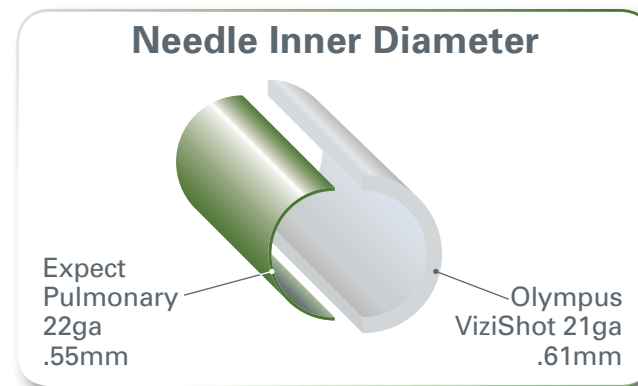


Reliability

Sharp needle tip grind is designed for precise penetration into the target area. Testing shows no deterioration in sample quality throughout a procedure.*

Thin Wall Design

Inner diameter of the 22ga Expect Needle is **only 10% smaller** than the Olympus 21ga needle.**



*For illustrative purposes only

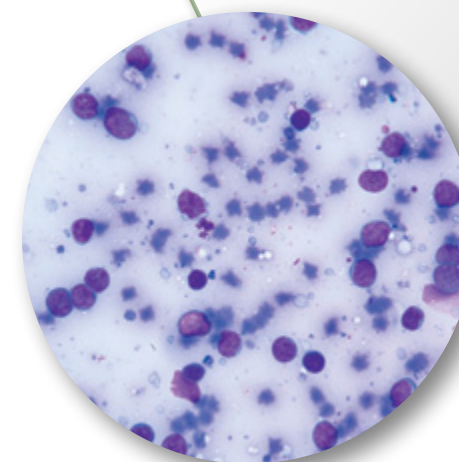
Highly Visible Echogenic Pattern



- Extends onto needle tip to help provide precise guidance within the target site
- Helps to maintain needle tip visibility at all times during a procedure

Beautiful samples, tissue everywhere.”

Shantel Hébert-Magee, MD
Florida Hospital



* Data on file. Bench test results may not necessarily be indicative of clinical performance.

** Source: Endo Bronchial Ultrasound Transbronchial Needle Aspiration (EBUS-TBNA) Competitor Device Testing. #91043238. Milan Vidovic, Molly Phillips - Hungerford 2013–2015. Page 32.



Comfort

Ergonomic rotating handle design and tactile feel to provide **precision** and **control**



Adaptor allows device to be compatible with all Olympus and Fuji EBUS Scopes

Durable Nitinol Stylet allows for reliable needle clearance throughout the procedure

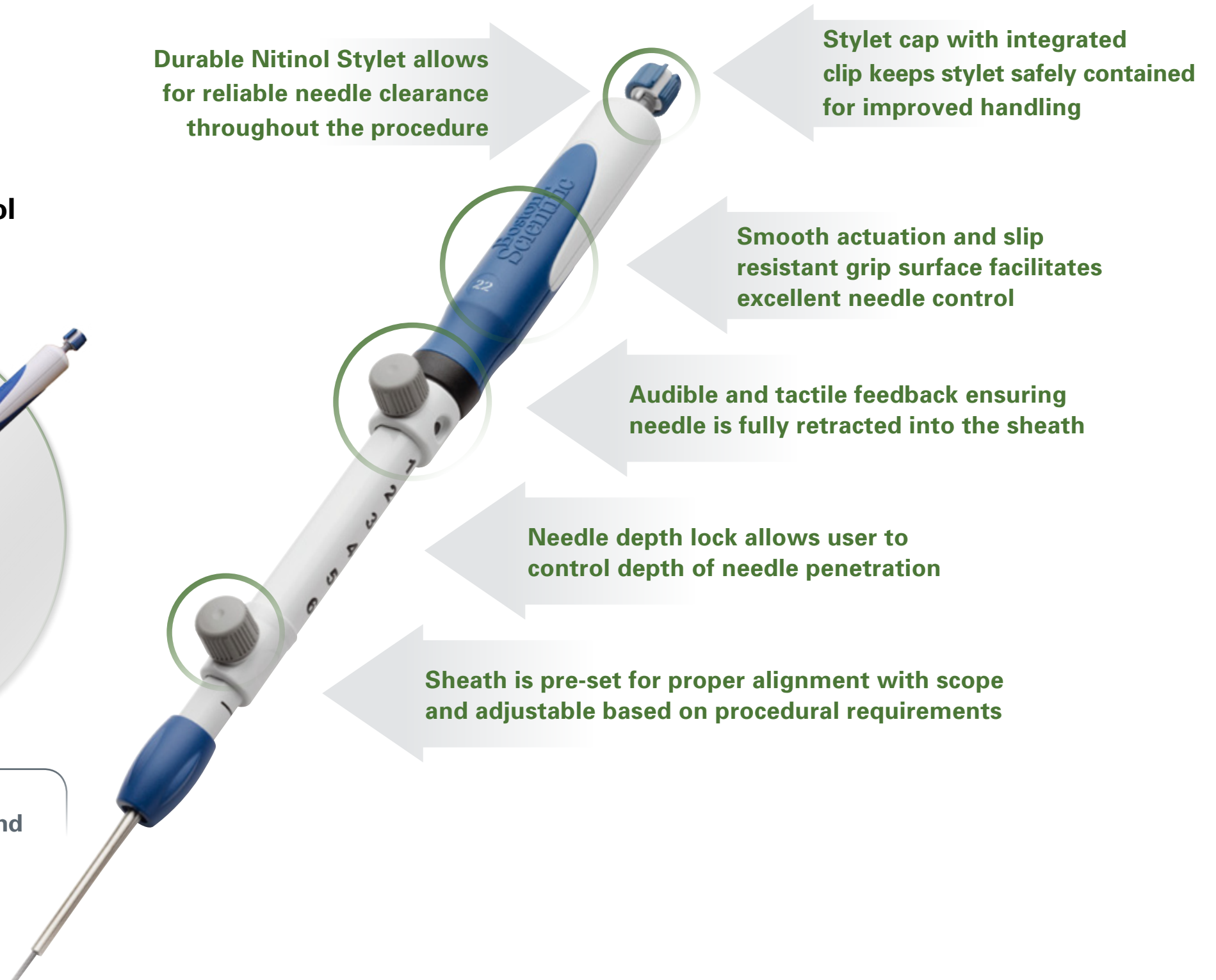
Stylet cap with integrated clip keeps stylet safely contained for improved handling

Smooth actuation and slip resistant grip surface facilitates excellent needle control

Audible and tactile feedback ensuring needle is fully retracted into the sheath

Needle depth lock allows user to control depth of needle penetration

Sheath is pre-set for proper alignment with scope and adjustable based on procedural requirements





The handle is very ergonomic. I thought it wouldn't make a difference in terms of **procedural efficiency**, but it really does.”

William A. Bulman, MD

Columbia University Medical Center

I have **better control** of the needle, especially in small lymph nodes.”

Antoni Rosell, MD

Bellvitge Hospital Universitari

This needle is so **durable**, I only need to use one for a procedure now.”

Peter Delong, MD

Dartmouth-Hitchcock Medical Center





Expect™ Pulmonary

Endobronchial Ultrasound Transbronchial Aspiration Needle



Product Code	GTIN	Needle Size	Minimum Working Channel (mm)	Sheath Diameter (mm)	Packaging
Olympus Scope Compatible					
M00558220	08714729861409	Expect Pulmonary 22Ga – Olympus	2.0	1.6	Each
M00558221	08714729861430	Expect Pulmonary 22Ga – Olympus	2.0	1.6	Box 5
M00558250	08714729861416	Expect Pulmonary 25Ga – Olympus	2.0	1.4	Each
M00558251	08714729861447	Expect Pulmonary 25Ga – Olympus	2.0	1.4	Box 5
M00558731	08714729893189	Expect Pulmonary Needle Adaptor – Olympus	N / A	N / A	Box 10



All cited trademarks are the property of their respective owners. CAUTION: The law restricts these devices to sale by or on the order of a physician. Indications, contraindications, warnings and instructions for use can be found in the product labeling supplied with each device. Information for the use only in countries with applicable health authority product registrations. This material is not approved for use or distribution in France.

ENDO-323301-AB APR2016 Printed in Germany by medicalvision.

**Boston
Scientific**
Advancing science for life™

www.bostonscientific.eu

© 2016 Boston Scientific Corporation
or its affiliates. All rights reserved.
DINEND2346EB