

SpyGlass™ Discover Digital Catheter

SpyGlass™ Discover Digital Catheter Technique Spotlight: The Management of Mirizzi Syndrome Type 5

Presented by:

Dr. Saju Joseph
Spring Valley Hospital Medical Center
Las Vegas, NV



Patient Presentation

A 70-year-old male presented with right upper quadrant (RUQ) pain and obstructive jaundice. Imaging from a referring medical facility showed liver lesions and a gall bladder mass.

The patient underwent an ERCP where the following was found:

- Numerous stones in the common bile duct (CBD).
- A mass in the left hepatic duct.
- Extrinsic compression of the common hepatic duct (CHD) with signs of a gall bladder mass.

Pre-operative CA19-9 was 2000.



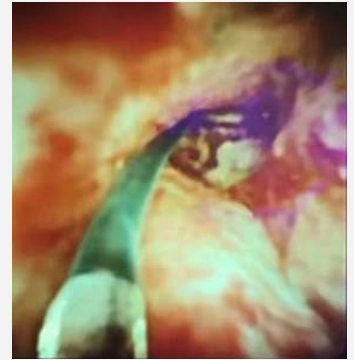
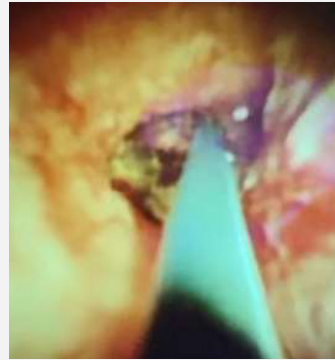
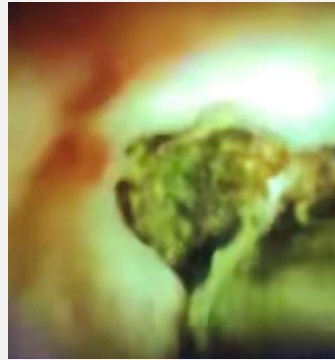
Procedure

The patient was taken to the operating room for a diagnostic laparoscopy. Intra-operatively, the patient was found to have numerous liver abscesses more concentrated in the lower liver. There was severe inflammation in the right upper quadrant of the liver. The gall bladder was completely covered by omentum and the colon.

An open procedure was then performed, and the patient was found to have:

- Type 5 Mirizzi's syndrome with a cholecysto-colonic fistula
- Compression as well as fistulization of the infundibulum to the CHD
- Feculent cholangitis
- Numerous stones throughout the biliary tree.

Upper hepatic endoscopy, stone visualization and capture



Design Benefits of SpyGlass™ Discover Digital Catheter:

In complex biliary cases, visualization and mapping of the biliary tree is integral to successfully manage the patient. SpyGlass Discover allows for intra-operative biliary mapping and intervention while providing best in class image quality. Furthermore, the slim profile and maneuverability of the digital catheter allows for thorough examination of the biliary tree, as well as stone clearance in more tortuous anatomy.

IMPORTANT INFORMATION: These materials are intended to describe common clinical considerations and procedural steps for the use of referenced technologies but may not be appropriate for every patient or case. Decisions surrounding patient care depend on the physician's professional judgment in consideration of all available information for the individual case. Boston Scientific (BSC) does not promote or encourage the use of its devices outside their approved labeling. Case studies are not necessarily representative of clinical outcomes in all cases as individual results may vary.

This case study was produced in cooperation with Dr. Joseph. Results from case studies are not predictive of results in other cases. Results in other cases may vary.

CAUTION: The law restricts these devices to sale by or on the order of a physician. Indications, contraindications, warnings and instructions for use can be found in the product labelling supplied with each device. Products shown for INFORMATION purposes only and may not be approved or for sale in certain countries. This material not intended for use in France. Rx Only.

All trademarks are the property of their respective owners.

©2021 Boston Scientific Corporation or its affiliates. All rights reserved.

ENDO-924906-AA

**Boston
Scientific**
Advancing science for life™

Boston Scientific Corporation
300 Boston Scientific Way
Marlborough, MA 01752-1234
www.bostonscientific.com

©2021 Boston Scientific Corporation
or its affiliates. All rights reserved.
ENDO-1030408-AA