



## SCIENTIFIC PROGRAMME

### The Forum - Case in Point

#### TAVI & Beyond: Tackling Coronary Challenges

Sunday, November 19<sup>th</sup> | 17:20-18:20 | Room 2 – The Forum



Anchorperson  
**Ole  
De Backer**



Spokesperson  
**Won-Keun  
Kim**



Discussant  
**Giuseppe  
Tarantini**



Discussant  
**Arif  
Khokhar**



Discussant  
**Nicolas van  
Mieghem**



Discussant  
**Fadi  
Sawaya**



Discussant  
**Verena  
Veulemans**



Discussant  
**Francesca  
Sanguineti**

#### Learning Objectives

- ▶ To understand the importance of coronary access after TAVI
- ▶ To understand the impact of TAV design and implantation technique on coronary access
- ▶ To get some insights on coronary accessibility from extensive bench test work
- ▶ To appreciate the impact of TAV design on coronary accessibility in a TAV-in-TAV scenario

### TnT

#### TAVI Unleashed: Optimization of immediate and long-term outcomes

Monday, November 20<sup>th</sup> | 17:30-18:30 | Room 3



Anchorperson  
**Didier  
Tchétché**



Spokesperson  
**Mohamed  
Abdel-Wahab**



Discussant  
**Chris  
Cook**



Discussant  
**Julia  
Mascherbauer**



Discussant  
**Federico  
de Marco**

#### Learning Objectives

- ▶ To understand the impact of PVL, conduction disturbances, stroke and PPM after TAVI
- ▶ To understand THV design and its implications to appropriately select the first valve
- ▶ To discuss latest clinical evidence in THVs



SESSION #1

SESSION #2



## TRAINING VILLAGE - MEET THE EXPERTS

### Understanding the fundamentals of ACURATE *neo2* with Virtual Reality

Sunday, November 19<sup>th</sup> | 12.00-13.00

**Join us if you want:**

- ▶ To understand the implications of ACURATE *neo2* unique features & characteristics in clinical practice
- ▶ To know the procedural considerations with ACURATE *neo2* for achieving a successful implantation
- ▶ To understand how a simple and consistent procedural strategy leads to lifelong clinical outcomes



Trainer  
**Ole De Backer**

### Patient sizing in challenging anatomies – How to handle Valve-in-Valve?

Sunday, November 19<sup>th</sup> | 15:00-16:00

**Join us if you want:**

- ▶ To optimize your device selection and pre-procedural planning
- ▶ To practice sizing for Valve-in-Valve on 3mensio (Hands-on)
- ▶ To learn the tips & tricks for measuring patient anatomies undergoing Valve-in-Valve
- ▶ To understand sizing considerations in Valve-in-Valve situations



Trainer  
**Won-Keun Kim**

### Imaging Interpretation – What the different angio views tell you about valve position and commissural alignment.

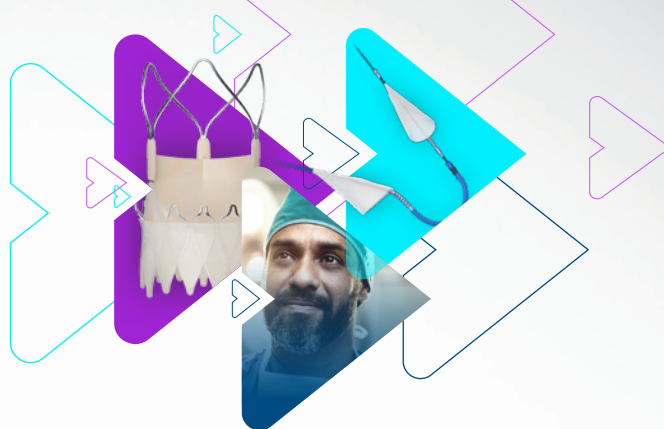
Monday, November 20<sup>th</sup> | 10:00-11:00

**Join us if you want:**

- ▶ To understand the impact angio views on precise positioning of the valve
- ▶ To experience first-hand how to interpret angio imaging compared to 3D reality
- ▶ To fine-tune ACURATE *neo2* commissural alignment



Trainer  
**Ole De Backer**



## TRAINING VILLAGE

### Lifetime coronary access with ACURATE neo2 (hands-on session using Heartroid simulation)

Monday, November 20<sup>th</sup> | 12.00-13.00

#### Join us if you want:

- ▶ To learn how to optimize your implantation technique to facilitate coronary access following native valve TAVI
- ▶ To understand the challenges and techniques for coronary access with ACURATE neo2
- ▶ To learn how to preserve lifelong coronary access with the ACURATE neo2 used for native valve, TAVI-in-TAVI or TAVI-in-SAVR



Trainer  
**Arif  
Khokhar**



Trainer  
**Alessandro  
Beneduce**



Trainer  
**Francesco  
Giannini**

### Understanding the fundamentals of ACURATE neo2 with Virtual Reality

Monday, November 20<sup>th</sup> | 15:00-16:00

#### Join us if you want:

- ▶ Understand the implications of ACURATE neo2 unique features & characteristics in clinical practice
- ▶ To know the procedural considerations with ACURATE neo2 for achieving a successful implantation
- ▶ To Understand how a simple and consistent procedural strategy leads to lifelong clinical outcomes



Trainer  
**Didier  
Tchéché**

### Lifetime coronary access with ACURATE neo2 (hands-on session using Heartroid simulation)

Tuesday, November 21<sup>st</sup> | 11.00-12.00

#### Join us if you want:

- ▶ To learn how to optimize your implantation technique to facilitate coronary access following native valve TAVI
- ▶ To understand the challenges and techniques for coronary access with ACURATE neo2
- ▶ To learn how to preserve lifelong coronary access with the ACURATE neo2 used for native valve, TAVI-in-TAVI or TAVI-in-SAVR



Trainer  
**Arif  
Khokhar**



Trainer  
**Alessandro  
Beneduce**



Trainer  
**Francesco  
Giannini**