



# EuroIntervention

## REPRINT

### **Real-world experience using the ACURATE neo prosthesis: 30-day outcomes of 1,000 patients enrolled in the SAVI TF registry**

Helge Möllmann, Christian Hengstenberg, Michael Hilker, Sebastian Kerber,  
Ulrich Schäfer, Tanja Rudolph, Axel Linke, Norbert Franz, Thomas Kuntze,  
Holger Nef, Utz Kappert, Thomas Walther, Michael O. Zembala,  
Stefan Toggweiler, Won-Keun Kim



# Real-world experience using the ACURATE neo prosthesis: 30-day outcomes of 1,000 patients enrolled in the SAVI TF registry



**Helge Möllmann**<sup>1,2\*</sup>, MD; Christian Hengstenberg<sup>3,4,5</sup>, MD; Michael Hilker<sup>6</sup>, MD; Sebastian Kerber<sup>7</sup>, MD; Ulrich Schäfer<sup>8</sup>, MD; Tanja Rudolph<sup>9</sup>, MD; Axel Linke<sup>10</sup>, MD; Norbert Franz<sup>11</sup>, MD; Thomas Kuntze<sup>12</sup>, MD; Holger Nef<sup>13</sup>, MD; Utz Kappert<sup>14</sup>, MD; Thomas Walther<sup>15</sup>, MD; Michael O. Zembala<sup>16</sup>, MD; Stefan Toggweiler<sup>17</sup>, MD; Won-Keun Kim<sup>1,15</sup>, MD

1. Department of Cardiology, Kerckhoff Heart and Lung Center, Bad Nauheim, Germany; 2. Department of Internal Medicine-I, Cardiology, St. Johannes-Hospital, Dortmund, Germany; 3. Klinik für Herz- und Kreislauferkrankungen, Deutsches Herzzentrum München, Technische Universität München, Munich, Germany; 4. Deutsches Zentrum für Herz- und Kreislauf-Forschung (DZHK) e.V. (German Center for Cardiovascular Research), Partner Site Munich Heart Alliance, Munich, Germany; 5. Universitätsklinik für Innere Medizin II, Klinische Abteilung für Kardiologie, Medizinische Universität Wien, Vienna, Austria; 6. Department of Cardiothoracic Surgery, University Medical Center Regensburg, Regensburg, Germany; 7. Department of Cardiology, Herz- und Gefäß-Klinik Bad Neustadt, Bad Neustadt an der Saale, Germany; 8. Department of Cardiology, University Heart Center Hamburg, Hamburg, Germany; 9. Department of Cardiology, Heart Center, University Hospital Cologne, Cologne, Germany; 10. Department of Cardiology, Heart Center Leipzig University, Leipzig, Germany; 11. Department of Cardiology, Schüchtermann-Schiller'sche Kliniken GmbH, Bad Rothenfelde, Germany; 12. Department of Cardiac Surgery, Central Hospital Bad Berka, Bad Berka, Germany; 13. Department of Cardiology, University Hospital Giessen and Marburg, Giessen, Germany; 14. Department of Cardiac Surgery, University Heart Center Dresden, Dresden, Germany; 15. Department of Cardiac Surgery, Kerckhoff Heart and Lung Center, Bad Nauheim, Germany; 16. Department of Cardiac, Vascular and Endovascular Surgery and Transplantology, Medical University of Silesia in Katowice, Silesian Center for Heart Diseases, Zabrze, Poland; 17. Heart Center Lucerne, Luzerner Kantonsspital, Lucerne, Switzerland

H. Möllmann and C. Hengstenberg contributed equally to this manuscript.

This paper also includes supplementary data published online at: [http://www.pcronline.com/eurointervention/130th\\_issue/286](http://www.pcronline.com/eurointervention/130th_issue/286)

## KEYWORDS

- aortic stenosis
- femoral
- transcatheter aortic valve implantation (TAVI)

## Abstract

**Aims:** The aim of the SAVI TF registry was to assess the safety and performance of the self-expanding ACURATE *neo* transfemoral transcatheter heart valve in a large patient population with severe aortic stenosis and to investigate whether the outcomes obtained in the CE-mark cohort can be replicated in an unselected all-comers population.

**Methods and results:** From October 2014 until April 2016, 1,000 patients were enrolled in this prospective, European multicentre registry. Patients were  $81.1 \pm 5.2$  years and had a logistic EuroSCORE II and STS score of  $6.6 \pm 7.5\%$  and  $6.0 \pm 5.6\%$ , respectively. Predilatation was performed in 96.1% of patients and post-dilatation in 44.8%. Procedural and device success were both obtained in 98.7%; failure comprised nine valve-in-valve procedures, three conversions to surgery, and one aborted procedure. The primary endpoint was 30-day mortality, which was observed in 14 patients (1.4% [95% CI: 0.7-2.1]). Disabling stroke was seen in 1.2% (95% CI: 0.5-1.9) and new pacemaker implantation in 8.3% (95% CI: 6.6-10.0). At discharge, mean effective orifice area was  $1.77 \pm 0.46$  cm<sup>2</sup> and mean gradient  $8.4 \pm 4.0$  mmHg; 4.1% of patients had a more than mild paravalvular leak.

**Conclusions:** In this initial experience, treatment with the ACURATE *neo* prosthesis resulted in good clinical outcomes with very low complication rates.

\*Corresponding author: Klinik für Innere Medizin I, St.-Johannes Hospital, Johannesstraße 9-13, 44137 Dortmund, Germany. E-mail: [helge.moellmann@joho-dortmund.de](mailto:helge.moellmann@joho-dortmund.de)

## Abbreviations

<b>EOA</b>	effective orifice area
<b>NYHA</b>	New York Heart Association
<b>PPI</b>	permanent pacemaker implantation
<b>PVL</b>	paravalvular leak
<b>SAVI-TF</b>	Symetis ACURATE Neo™ Valve Implantation Using TransFemoral Access: SAVI TF Registry
<b>TAVI</b>	transcatheter aortic valve implantation

## Introduction

Severe aortic stenosis is a major cause of morbidity and mortality in the elderly. In patients above 75 years, the prevalence of aortic stenosis is 12.4% and the prevalence of severe aortic stenosis 3.4%<sup>1</sup>. As surgery was denied to one third of elderly patients<sup>2</sup>, transcatheter aortic valve implantation (TAVI) was developed to offer a less invasive therapy for high-risk patients. Meanwhile, the technique has matured with decreasing complication rates<sup>3</sup>.

Prior to CE-mark approval, devices are tested in highly controlled clinical studies examining a limited number of patients. It is therefore important that more patients are followed after CE-mark approval to detect possible rare clinical and safety issues in the real-world scenario. The ACURATE *neo*™ transcatheter aortic prosthesis (Symetis SA, a Boston Scientific company, Ecublens, Switzerland) is a self-expanding valve for transfemoral access, which was built on the ACURATE TA™ transapical platform<sup>4,5</sup>. The ACURATE *neo* transcatheter system for transfemoral use has proven to be safe and effective in the first 89 patients implanted, and received CE-mark approval in 2014<sup>6</sup>. The Symetis ACURATE *neo*™ Valve Implantation Using TransFemoral Access: SAVI TF Registry (SAVI-TF) now aims to evaluate further the safety and performance under real-world conditions in a large patient cohort with severe aortic stenosis.

## Methods

### STUDY DESIGN AND POPULATION

SAVI-TF is a European, prospective, single-arm, multicentre all-comers registry including 1,000 patients in whom implantation of an ACURATE *neo* prosthesis was attempted. Implanting centres and numbers are given in **Supplementary Figure 1**. Inclusion criteria were: 1) eligibility for transcatheter treatment of severe aortic stenosis with the ACURATE *neo* aortic bioprosthesis and ACURATE TF™ transfemoral delivery system as per instructions for use (age  $\geq 75$  years, severe aortic stenosis, and at high risk of surgical aortic valve replacement, as determined by the Heart Team), 2) signed informed consent/data authorisation form, and 3) willingness to return for follow-up visits. Exclusion criteria were ineligibility for treatment with the ACURATE *neo* aortic bioprosthesis and ACURATE TF transfemoral delivery system as per instructions for use. All centres were aware that a consecutive series of patients receiving the ACURATE *neo* valve should be obtained. Valve sizing and treatment were conducted per each centre's standard of care. Follow-up was scheduled at discharge or seven days  $\pm 1$  day (whichever occurred first), at 30  $\pm 7$  days, and at one year post procedure.

The registry was registered at ClinicalTrials.gov (NCT02306226), conducted according to the Declaration of Helsinki, approved by the local ethics committees, and all patients provided written informed consent. To cover the gap between commercialisation and ethics committee approval, hence to ensure that data starting from the first commercially implanted patients were collected, the study protocol allowed retrospective collection of informed consent.

### STUDY DEVICE AND PROCEDURE

The ACURATE *neo* aortic bioprosthesis (**Supplementary Figure 2**) and its ACURATE TF transfemoral delivery system have been described previously<sup>6,7</sup>. The valve is available in three sizes (small, medium and large) to accommodate native aortic annulus diameters from 21 to 27 mm. The self-expanding nitinol frame has porcine pericardial leaflets in supra-annular position, treated with the BioFix™ anti-calcification process, and a pericardial skirt acts as a seal against paravalvular regurgitation. At the time of enrolment, the transfemoral ACURATE TF delivery system had to be used with an 18 Fr or larger introducer sheath.

### ENDPOINTS AND DEFINITIONS

The primary endpoint was all-cause mortality at 30 days. Secondary endpoints were defined according to Valve Academic Research Consortium-2 criteria and included stroke (disabling and non-disabling), myocardial infarction, bleeding, acute kidney injury, vascular complication, conduction disturbances and other TAVI-related complications<sup>8</sup>. Furthermore, two combined endpoints were used: “procedural success”, defined as valve implanted in the intended location, aortic regurgitation <grade 3, mean aortic gradient <20 mmHg, effective orifice area (EOA)  $\geq 1.0$  cm<sup>2</sup>, no valve-in-valve or conversion to surgery, and no intra-procedural mortality; “device success”, defined as valve implanted in intended location, aortic regurgitation <grade 3, mean aortic gradient <20 mmHg, effective orifice area (EOA)  $\geq 1.0$  cm<sup>2</sup>, no valve-in-valve or conversion to surgery, no impingement of the mitral valve, and normal coronary blood flow. Finally, the functional improvement from baseline as per New York Heart Association (NYHA) functional classification was examined.

### STATISTICAL ANALYSIS

No formal sample size calculation was conducted. The analysis is based on the intention-to-treat population and on data available. For quantitative variables, means and standard deviations (SD) were calculated, and for categorical data absolute and relative frequencies. When appropriate, 95% confidence intervals were calculated. Survival curves were constructed using Kaplan-Meier estimates. In a *post hoc* analysis, patients with and without post-dilatation and patients who signed informed consent prior to and post procedure were compared. Clinical outcomes between these groups were compared using the log-rank test. Comparisons between baseline and follow-up were performed using the Cochran-Mantel-Haenszel test. Data analysis was performed using SAS 9.3 (SAS Institute, Cary, NC, USA).

## Results

From October 2014 until April 2016, 1,000 patients were enrolled at 25 sites in Europe. None of the sites enrolled more than 15% of the patients (**Supplementary Figure 1**). Baseline characteristics are provided in **Table 1**. Patients were  $81.1 \pm 5.2$  years with logistic EuroSCORE II and STS scores of  $6.6 \pm 7.5\%$  and  $6.0 \pm 5.6\%$ , respectively (**Table 1**). Determined by computed tomography and based on subjective estimate of the observer, 33.1% had asymmetric calcification and 33.3% extreme or severe calcification.

The procedure was conducted under general anaesthesia in 63.1% of patients. In 87.7% of cases, an 18 Fr Cook introducer sheath (Cook Medical Inc., Bloomington, IN, USA) was used. The mean distance to the right and left coronary ostium was  $15.0 \pm 3.2$  mm and  $13.3 \pm 2.9$  mm, respectively. Predilatation was performed in 96.1% of patients, 48.7% of the prostheses were deployed under rapid pacing and 44.8% required post-dilatation. Procedural and device success was obtained in 987 patients each, as valve-in-valve procedures were required in nine patients, conversion to surgery in three patients, and one procedure was aborted (**Table 2**). By valve size, procedural and device success was 98.9% (n=258), 98.4% (n=424), 99.0% (n=305) for small, medium and large valves, respectively (p=0.717).

Echocardiographic follow-up at discharge or 7 days $\pm$ 1 day, whichever occurred first, showed an EOA of  $1.77 \pm 0.46$  cm<sup>2</sup> (95% CI: 1.77-1.85), a mean gradient of  $8.4 \pm 4.0$  mmHg (95% CI: 8.06-8.59), and 4.1% (95% CI: 3.01-5.6) PVL  $\geq 2$  (**Table 3**). By valve

**Table 2. Procedural characteristics.**

		N=1,000
Predilatation		961 (96.1%)
Valve size	S	261 (26.1)
	M	431 (43.1)
	L	308 (38.0)
Device usage time <sup>a</sup> [min:sec]		6:34 $\pm$ 6:18
Deployed with rapid pacing		487 (48.7)
Post-dilatation		448 (44.8)
Mitral valve apparatus damage or dysfunction		0 (0.0)
Annular rupture		0 (0.0)
Ventricular septal perforation		0 (0.0)
Procedural/device success		987 (98.7)
Valve-in-valve		9 (0.9)
Conversion to surgery		3 (0.3)
Aborted procedure		1 (0.1)
Data are displayed as n (%) or mean $\pm$ SD. <sup>a</sup> Delivery system into sheath to delivery system removal post implant.		

size, PVL  $\geq 2$  was present in 4.4% (n=10), 3.3% (n=12), and 5.1% (n=13) for small, medium, and large valves, respectively (p=0.409).

Follow-up data at 30 days were available for 998 (99.8%) patients as one patient withdrew consent and one patient did not return for follow-up. The primary endpoint, all-cause mortality at 30 days, was observed in 1.4% (95% CI: 0.7-2.1) (**Figure 1**). Comparing outcomes of patients who signed informed consent prior to procedure (n=584) and those who signed informed consent thereafter (n=416), the mortality rate was 1.4% in both groups. The “early safety composite” endpoint occurred in 8.6% (95% CI: 6.9-10.3), disabling stroke in 1.2% (95% CI: 0.5-1.9), and a permanent pacemaker implantation (PPI) was required in 8.3% (95% CI: 6.6-10.0) (**Table 4**). NYHA class improved significantly (p<0.0001) from baseline with 90.0% of patients in NYHA Class I or II at 30 days (**Figure 2**). There was no significant difference in clinical outcomes of patients with post-dilatation compared to those without.

**Table 1. Baseline characteristics.**

	N=1,000
Age, years	81.1 $\pm$ 5.2 81 [78–85]
Male	388 (38.8)
Logistic EuroSCORE I, %	18.1 $\pm$ 12.5 15.0 [9.7–22.1]
Logistic EuroSCORE II, %	6.6 $\pm$ 7.5 4.0 [2.6–8.0]
STS score, %	6.0 $\pm$ 5.6 4.0 [3.0–6.6]
Annular diameter by CT, mm	N=789 24.0 $\pm$ 1.7 24.0 [22.8–25.2]
Degree of calcification by CT	N=845
None	1 (0.1)
Mild	162 (19.2)
Moderate	400 (47.3)
Severe	258 (30.5)
Extreme	24 (2.8)
Symmetry of calcification by CT	N=795
Symmetric	496 (62.4)
Diffuse	36 (4.5)
Asymmetric	263 (33.1)
Data are displayed as n (%) or mean $\pm$ SD, median [IQR]. CT: computed tomography; STS: Society of Thoracic Surgeons	

**Table 3. Echocardiographic parameters at baseline and early follow-up.**

	Baseline	7 days/discharge
Effective orifice area, cm <sup>2</sup>	N=865 0.72 $\pm$ 0.20	N=416 1.77 $\pm$ 0.46
Mean gradient, mmHg	N=872 42.7 $\pm$ 15.2	N=807 8.4 $\pm$ 4.0
Aortic regurgitation	N=871	N=844 <sup>a</sup>
$\leq$ Grade 1 (none to mild)	719 (82.5)	809 (95.9)
Grade 2 (moderate)	122 (14.0)	35 (4.1)
Grade 3 (moderate to severe)	22 (2.5)	0 (0.0)
Grade 4 (severe)	8 (0.9)	0 (0.0)
Data are displayed as n (%), unpaired data. <sup>a</sup> paravalvular leak.		

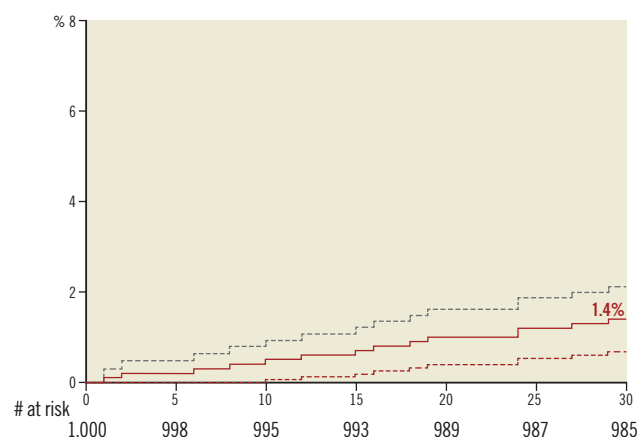


Figure 1. Kaplan-Meier 30-day mortality rate.

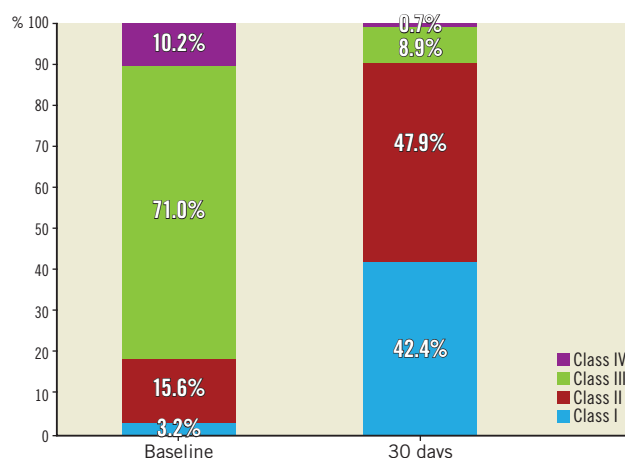


Figure 2. NYHA classification at baseline and 30 days. NYHA: New York Heart Association

## Discussion

The main finding of SAVI-TF is that transfemoral implantation of the ACURATE *neo* prosthesis in an all-comers population under real-world conditions is safe and effective. Complication rates at 30 days were very low; the very low pacemaker rate might make the prosthesis particularly useful for patients with reduced left ventricular ejection fraction<sup>5</sup>.

The SAVI-TF patient population reflects the common TAVI population with an average age above 80 years and intermediate to high risk scores. No coronary obstruction occurred, and procedure and device success was obtained in nearly all patients (98.7%). The device usage time was short (6:34 minutes from introduction to removal of the delivery system) and was nearly identical to the results of the CE-mark cohort (6 minutes)<sup>9</sup>.

Clinical outcomes of 1,000 patients enrolled led to small confidence intervals corroborating the reliability of results. Furthermore, results are in line with those obtained in 89 patients of the ACURATE *neo* CE-mark cohort and in 120 patients of

Table 4. Clinical outcomes at 30 days.

	Total N=998 <sup>a</sup>
Early safety <sup>b</sup>	86 (8.6)
Mortality	14 (1.4)
cardiovascular	10 (1.0)
Stroke	19 (1.9)
disabling	12 (1.2)
Life-threatening bleeding	13 (1.3)
Major bleeding	44 (4.4)
Acute kidney injury stage 2 or 3	13 (1.3)
Major vascular complication	32 (3.2)
Coronary obstruction requiring reintervention <sup>c</sup>	0 (0)
Repeat procedure	0 (0)
Myocardial infarction	3 (0.3)
Endocarditis	0 (0)
Valve thrombosis	0 (0)
Cardiac tamponade	4 (0.4)
New pacemaker implantation	83 (8.3)

Data are displayed as n (%). <sup>a</sup>1 patient withdrew consent after treatment, 1 did not return for 30-day visit. <sup>b</sup>a composite of all-cause mortality, all stroke, life-threatening bleeding, coronary obstruction requiring intervention, major vascular complication, acute kidney injury stage 2 or 3, and repeat procedure for valve-related dysfunction. <sup>c</sup>1 partial occlusion reported without need for intervention.

a recently published single-centre experience. In particular, the rate for mortality was 1.4% compared to 3.4% and 2.5%, the rate for disabling stroke was 1.2% compared to 2.2% and 2.7% (the latter displaying the overall stroke rate), and the rate for PPI was 8.3% compared to 9.0% and 9.6%, respectively<sup>9,10</sup>.

Very good clinical outcomes are also seen in other contemporary TAVI registries. Specifically, at 30 days, the all-cause mortality rates were 3.2% in 317 patients implanted with the CoreValve® Evolut™ R (Medtronic, Minneapolis, MN, USA) in the Swiss TAVI registry<sup>11</sup>, 2.0% in 250 patients of the Direct Flow registry<sup>12</sup>, 1.9% in 1,695 transfemoral patients of the SOURCE 3 registry<sup>13</sup>, 2.6% in 1,014 patients of the Lotus RESPOND registry<sup>14</sup>, and 2.9-3.6% in 102 patients of the Portico multicentre trial<sup>15</sup> and 222 patients of the Portico TF EU study<sup>16</sup> as compared to 1.4% in our series. The respective rates for disabling stroke were 1.9%<sup>11</sup>, 2.0%<sup>12</sup>, 0.5%<sup>13</sup>, 2.2%<sup>14</sup>, and 2.9-3.2%<sup>15,16</sup>, as compared to 1.2% in our series. Only 3.2% major vascular complications occurred, even though at the time of enrolment the ACURATE TF delivery system had to be used with an 18 Fr or larger introducer sheath, while nowadays it can also be used with a 13 Fr Solopath® system (Terumo Corp., Tokyo, Japan).

The rates for PPI were 22.1% for CoreValve Evolut R, 12.0% for Direct Flow, 12.3% for SOURCE 3, 30.0% for Lotus, and 9.8-13.5% for Portico<sup>11-16</sup> as compared to 8.3% in our series. In a recent small study using the ACURATE *neo*, there were even fewer PPIs required (2.3%). In that study, to minimise trauma, predilatation balloon diameters were selected to be 1 to 3 mm smaller than the perimeter-derived annulus diameter, prosthesis size was



carefully selected (size S for annular perimeters <72 mm, M for 72-78 mm, and L for perimeters of 79-84 mm), and post-dilatation balloon diameters were selected to be 1 to 2 mm smaller than the perimeter-derived annulus diameter<sup>17</sup>.

The supra-annular design of the ACURATE *neo* led to large EOAs ( $1.77 \pm 0.46$  mm<sup>2</sup>) and low mean gradients ( $8.4 \pm 4.0$  mmHg), despite the fact that the valve only accommodates an annular diameter up to 27 mm. The results are similar to those obtained in contemporary registries, such as the ones described above, with the exception of the Direct Flow registry, which reported an EOA of only 1.5 mm<sup>2</sup> and a mean gradient of 15.8 mmHg<sup>12</sup>. Further, the LOTUS<sup>TM</sup> valve (Boston Scientific, Marlborough, MA, USA) showed very low rates of moderate or severe PVL (0.3%) in the RESPOND registry, but at the cost of a high pacemaker rate<sup>14</sup>. With the ACURATE *neo*, we observed moderate or severe regurgitation in 4.1%, which is within the ranges observed for the CoreValve<sup>®</sup> Evolut<sup>TM</sup> R (8.5%), Direct Flow<sup>®</sup> (Direct Flow Medical, Santa Rosa, CA, USA) (3%), SAPIEN 3 (Edwards Lifesciences, Irvine, CA, USA) (3.1%), and the Portico<sup>TM</sup> prosthesis (St. Jude Medical, St. Paul, MN, USA) (3.8%-5.7%)<sup>11-13,15,16,18</sup>. Also encouraging is the functional improvement, with 90% of patients being in NYHA Class I or II at 30 days, reflecting the low invasiveness of the transcatheter procedure with fast recovery.

We did not observe any differences in complication rates between patients with and without post-dilatation. Similarly, post-dilatation of the self-expanding CoreValve prosthesis did not impair clinical outcomes<sup>19</sup>. In contrast, data obtained from the balloon-expandable SAPIEN prosthesis showed a significant increase of acute and sub-acute cerebrovascular events in the post-dilatation group<sup>20-22</sup>. This is of particular importance as major stroke is an important predictor for mortality<sup>22</sup>. However, it is unclear whether the increased cerebrovascular risk observed with balloon-expandable valves was due to the post-dilatation *per se* or rather was associated with a high calcium burden, causing a higher likelihood of cerebrovascular events in the post-dilatation group<sup>23,24</sup>.

## Limitations

The limitations of SAVI-TF are those inherent to non-interventional registries with standard-of-care treatment. A major limitation is that informed consent was allowed to be obtained retrospectively, originally to cover the gap between commercialisation and ethics approval. This introduces a bias, as only patients who survived the index procedure were able to provide retrospective informed consent. However, 30-day mortality was the same in the cohort of patients who signed informed consent post procedure compared to those who signed prior to the procedure (1.4%), hence the potential bias is limited. Furthermore, only limited baseline characteristics were assessed, and device and procedural success were not defined according to Valve Academic Research Consortium-2 criteria. There is a lack of echocardiographic data. Additionally, no core laboratories were used, diminishing the validity of echocardiographic parameters and determination of calcification at baseline, the latter being further hampered by the lack of a clear

definition. Assessing the severity of paravalvular regurgitation directly after prosthesis deployment and prior to post-dilatation would have been helpful to assess the usefulness of post-dilatation in reducing paravalvular regurgitation and to identify anatomies which might not be responsive to post-dilatation. The echocardiogram was conducted at discharge or seven days. For better comparability, a 30-day follow-up echocardiogram would have been more suitable as – considering the self-expanding nature of the prosthesis – paravalvular regurgitation might have been reduced even further at 30 days compared to discharge.

## Conclusions

This European, multicentre, all-comers registry included 1,000 patients and confirmed the very good outcomes of the ACURATE *neo* CE-mark cohort. Complication rates were very low with – aside from one multicentre study using the same device – the lowest 30-day pacemaker rate for self-expanding transcatheter heart valves published to date.

## Impact on daily practice

This is the largest series of the ACURATE *neo* prosthesis to date. It shows that the prosthesis can be implanted with high procedural success and very low complication rates at 30 days (1.4% mortality, 1.2% disabling stroke, and 8.3% permanent pacemaker). Post-dilatation was frequent, but did not impact on clinical or safety outcomes. Due to these findings, there might be a specific value of the ACURATE *neo* prosthesis for those patients in whom permanent pacemaker implantation should be avoided.

## Acknowledgements

We thank Beatrix Doerr for her editorial assistance, reimbursed by Symetis SA, Ecublens, Switzerland.

## Funding

The study was sponsored by Symetis SA, Ecublens, Switzerland.

## Conflict of interest statement

H. Möllmann and W-K. Kim are proctors for Symetis and St. Jude Medical. C. Hengstenberg is proctor for and has received speaker's honoraria from Edwards Lifesciences and Symetis. M. Hilker, U. Schäfer, and T. Rudolph are proctors for Symetis and have received speaker's honoraria. A. Linke has received speaker's honoraria from or served as a consultant for Medtronic, St. Jude Medical, Claret Medical Inc., Boston Scientific, Edwards Lifesciences, Symetis and Bard, and owns stock options from Claret Medical Inc. S. Toggweiler serves as a proctor and consultant to Symetis/Boston Scientific, is a consultant to NVT and has received speaker fees from Symetis/Boston Scientific, Edwards Lifesciences and Medtronic. M. Zembala serves as a proctor and consultant to Symetis/Boston Scientific, AtriCure Inc. and Abbott. The other authors have no conflicts of interest to declare.

## References

- Osnabrugge RL, Mylotte D, Head SJ, Van Mieghem NM, Nkomo VT, LeReun CM, Bogers AJ, Piazza N, Kappetein AP. Aortic stenosis in the elderly: disease prevalence and number of candidates for transcatheter aortic valve replacement: a meta-analysis and modeling study. *J Am Coll Cardiol*. 2013;62:1002-12.
- Iung B, Cachier A, Baron G, Messika-Zeitoun D, Delahaye F, Tornos P, Gohlke-Barwolf C, Boersma E, Ravaud P, Vahanian A. Decision-making in elderly patients with severe aortic stenosis: why are so many denied surgery? *Eur Heart J*. 2005;26:2714-20.
- Gaede L, Kim WK, Blumenstein J, Liebetrau C, Dörr O, Nef H, Hamm C, Walther T, Achenbach S, Elsässer A, Möllmann H. Temporal trends in transcatheter and surgical aortic valve replacement: An analysis of aortic valve replacements in Germany during 2012-2014. *Herz*. 2017;42:316-24.
- Kempfert J, Treede H, Rastan AJ, Schönborg M, Thielmann M, Sorg S, Mohr FW, Walther T. Transapical aortic valve implantation using a new self-expandable bioprosthesis (ACURATE TA)<sup>TM</sup>: 6-month outcomes. *Eur J Cardiothorac Surg*. 2013;43:52-6.
- Börgermann J, Holzhey DM, Thielmann M, Girdauskas E, Schroefel H, Hofmann S, Treede H, Matschke K, Hilker M, Strauch JT, Carrel T, Wahlers T, Diegeler A, Kempfert J, Walther T. Transcatheter aortic valve implantation using the ACURATE TA<sup>TM</sup> system: 1-year outcomes and comparison of 500 patients from the SAVI registries. *Eur J Cardiothorac Surg*. 2017;51:936-42.
- Schäfer U, Conradi L, Diemert P, Deuschl F, Schofer N, Seiffert M, Lubos E, Schirmer J, Reichensperner H, Blankenberg S, Treede H. Symetis ACURATE TAVI: review of the technology, developments and current data with this self-expanding transcatheter heart valve. *Minerva Cardioangiol*. 2015;63:359-69.
- Möllmann H, Diemert P, Grube E, Baldus S, Kempfert J, Abizaid A. Symetis ACURATE TF<sup>TM</sup> aortic bioprosthesis. *EuroIntervention*. 2013;9 Suppl:S107-10.
- Kappetein AP, Head SJ, Gèneux P, Piazza N, Van Mieghem NM, Blackstone EH, Brott TG, Cohen DJ, Cutlip DE, van Es GA, Hahn RT, Kirtane AJ, Krucoff MW, Kodali S, Mack MJ, Mehran R, Rodés-Cabau J, Vranckx P, Webb JG, Windecker S, Serruys PW, Leon MB. Updated standardized endpoint definitions for transcatheter aortic valve implantation: the Valve Academic Research Consortium-2 consensus document. *Eur Heart J*. 2012;33:2403-18.
- Möllmann H, Walther T, Siqueira D, Diemert P, Treede H, Grube E, Nickenig G, Baldus S, Rudolph T, Kuratani T, Sawa Y, Kempfert J, Kim WK, Abizaid A. Transfemoral TAVI using the self-expanding ACURATE neo prosthesis: one-year outcomes of the multicentre "CE-approval cohort". *EuroIntervention*. 2017;13:e1040-6.
- Hamm K, Reents W, Zacher M, Kerber S, Diegeler A, Schieffer B, Barth S. Transcatheter aortic valve implantation using the ACURATE TA and ACURATE neo valves: a four-year single-centre experience. *EuroIntervention*. 2017;13:53-9.
- Noble S, Stortecky S, Heg D, Tuller D, Jeger R, Toggweiler S, Ferrari E, Nietlisbach F, Taramasso M, Maisano F, Grunenfelder J, Juni P, Huber C, Carrel T, Windecker S, Wenaweser P, Roffi M. Comparison of procedural and clinical outcomes with Evolut R versus Medtronic CoreValve: a Swiss TAVI registry analysis. *EuroIntervention*. 2017;12:e2170-6.
- Naber CK, Pyxaras SA, Ince H, Frambach P, Colombo A, Butter C, Gatto F, Hink U, Nickenig G, Bruschi G, Brueren G, Tchétché D, Den Heijer P, Schillinger W, Scholtz S, Van der Heyden J, Lefèvre T, Gilard M, Kuck KH, Schofer J, Divchev D, Baumgartner H, Asch F, Wagner D, Latib A, De Marco F, Kische S. A multicentre European registry to evaluate the Direct Flow Medical transcatheter aortic valve system for the treatment of patients with severe aortic stenosis. *EuroIntervention*. 2016;12:e1413-9.
- Wendler O, Schymik G, Treede H, Baumgartner H, Dumonteil N, Ihlberg L, Neumann FJ, Tarantini G, Zamorano JL, Vahanian A. SOURCE 3 Registry: Design and 30-Day Results of the European Post Approval Registry of the Latest Generation of the SAPIEN 3 Transcatheter Heart Valve. *Circulation*. 2017;135:1123-1132.
- Falk V, Wöhrle J, Hildick-Smith D, Bleiziffer S, Blackman DJ, Abdel-Wahab M, Gerckens U, Linke A, Ince H, Wenaweser P, Allocco DJ, Dawkins KD, Van Mieghem NM. Safety and efficacy of a repositionable and fully retrievable aortic valve used in routine clinical practice: the RESPOND Study. *Eur Heart J*. 2017;38:3359-66.
- Manoharan G, Linke A, Moellmann H, Redwood S, Frerker C, Kovac J, Walther T. Multicentre clinical study evaluating a novel resheathable annular functioning self-expanding transcatheter aortic valve system: safety and performance results at 30 days with the Portico system. *EuroIntervention*. 2016;12:768-74.
- Möllmann H, Linke A, Holzhey DM, Walther T, Manoharan G, Schäfer U, Heinz-Kuck K, Van Boven AJ, Redwood SR, Kovac J, Butter C, Søndergaard L, Lauten A, Schymik G, Worthley SG. Implantation and 30-Day Follow-Up on All 4 Valve Sizes Within the Portico Transcatheter Aortic Bioprosthetic Family. *JACC Cardiovasc Interv*. 2017;10:1538-47.
- Toggweiler S, Nissen H, Mogensen B, Cuculi F, Fallesen C, Veien KT, Brinkert M, Kobza R, Rück A. Very low pacemaker rate following ACURATE neo transcatheter heart valve implantation. *EuroIntervention*. 2017;13:1273-80.
- Naber CK, Pyxaras SA, Ince H, Latib A, Frambach P, den Heijer P, Wagner D, Butter C, Colombo A, Kische S. Real-world multicentre experience with the Direct Flow Medical repositionable and retrievable transcatheter aortic valve implantation system for the treatment of high-risk patients with severe aortic stenosis. *EuroIntervention*. 2016;11:e1314-20.
- Webb J, Gerosa G, Lefèvre T, Leipsic J, Spence M, Thomas M, Thielmann M, Treede H, Wendler O, Walther T. Multicenter evaluation of a next-generation balloon-expandable transcatheter aortic valve. *J Am Coll Cardiol*. 2014;64:2235-43.
- Barbanti M, Petronio AS, Etti F, Latib A, Bedogni F, De Marco F, Poli A, Boschetti C, De Carlo M, Fiorina C, Colombo A,

Brambilla N, Bruschi G, Martina P, Pandolfi C, Giannini C, Curello S, Sgroi C, Gulino S, Patane M, Ohno Y, Tamburino C, Attizzani GF, Immè S, Gentili A, Tamburino C. 5-Year Outcomes After Transcatheter Aortic Valve Implantation With CoreValve Prosthesis. *JACC Cardiovasc Interv.* 2015;8:1084-91.

21. Hahn RT, Pibarot P, Webb J, Rodes-Cabau J, Herrmann HC, Williams M, Makkar R, Szeto WY, Main ML, Thourani VH, Tuzcu EM, Kapadia S, Akin J, McAndrew T, Xu K, Leon MB, Kodali SK. Outcomes with post-dilation following transcatheter aortic valve replacement: the PARTNER I trial (placement of aortic transcatheter valve). *JACC Cardiovasc Interv.* 2014;7:781-9.

22. Nombela-Franco L, Webb JG, de Jaegere PP, Toggweiler S, Nuis RJ, Dager AE, Amat-Santos IJ, Cheung A, Ye J, Binder RK, van der Boon RM, Van Mieghem N, Benitez LM, Pérez S, Lopez J, San Roman JA, Doyle D, Delarochellière R, Urena M, Leipsic J, Dumont E, Rodés-Cabau J. Timing, predictive factors, and prognostic value of cerebrovascular events in a large cohort of patients undergoing transcatheter aortic valve implantation. *Circulation.* 2012;126:3041-53.

23. Nombela-Franco L, Rodés-Cabau J, Delarochellière R, Larose E, Doyle D, Villeneuve J, Bergeron S, Bernier M, Amat-Santos IJ, Mok M, Urena M, Rheault M, Dumesnil J, Cote M, Pibarot P, Dumont E. Predictive factors, efficacy, and safety of balloon post-dilation after transcatheter aortic valve implantation with a balloon-expandable valve. *JACC Cardiovasc Interv.* 2012;5:499-512.

24. Daneault B, Koss E, Hahn RT, Kodali S, Williams MR, Gagnéux P, Paradis JM, George I, Reiss GR, Moses JW, Smith CR, Leon MB. Efficacy and safety of postdilatation to reduce paravalvular regurgitation during balloon-expandable transcatheter aortic valve replacement. *Circ Cardiovasc Interv.* 2013;6:85-91.

## Supplementary data

**Supplementary Figure 1.** Enrolment per centre.

**Supplementary Figure 2.** ACURATE *neo* prosthesis.

The supplementary data are published online at:

<http://www.pcronline.com/>

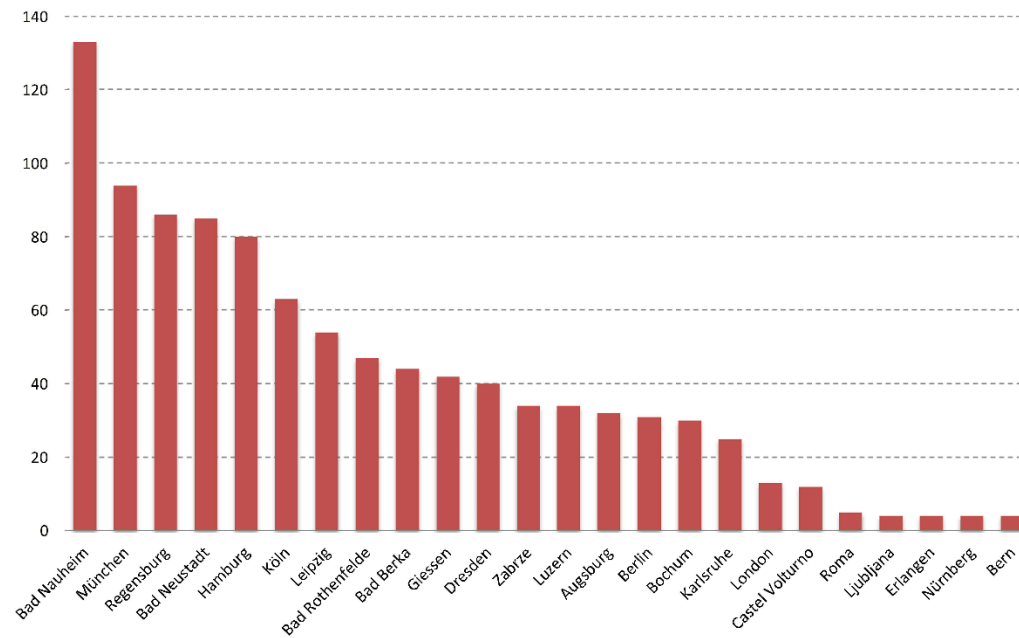
[eurointervention/130th\\_issue/286](http://eurointervention/130th_issue/286)





## Supplementary data

**Supplementary Figure 1.** Enrolment per centre.



**Supplementary Figure 2.** ACURATE *neo* prosthesis.

