



ACURATE *neo*[™]

Aortic Valve System

NEOPRO Multicenter Comparison Study ACURATE *neo* vs. Evolut PRO

Transcatheter Aortic Valve Replacement with Next-generation Self-expanding Devices: A Multicenter, Retrospective, Propensity-matched Comparison of Evolut PRO versus ACURATE *neo* Transcatheter Heart Valves

Pagnesi M, et al. *JACC: Cardiovasc Interv.* Mar 2019;12(5):433-443; DOI:10.1016/j.jcin.2018.11.036.

Study Design

NEOPRO is the first international, multicenter, observational, retrospective registry comparing and evaluating the performance of ACURATE *neo* (NEO) and Evolut PRO (PRO). 1,551 patients (1,263 NEO, 288 PRO) were treated at 24 centers between January 2012 and March 2018 and evaluated in a propensity score matching analysis. All consecutive patients treated with transfemoral TAVI for symptomatic, severe aortic stenosis of the native aortic valve with either NEO or PRO implantation were included.

The primary endpoint was device success, procedural complications and VARC-2-defined clinical outcomes at 30 days (including the early safety composite endpoint).

Clinical Highlights

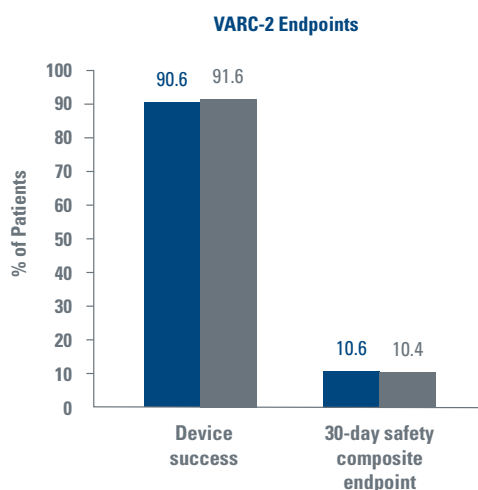
ACURATE *neo* comparable to Evolut PRO in device success and 30-day safety composite endpoint according to VARC-2 criteria

ACURATE *neo* comparable to Evolut PRO in 30-day clinical outcomes

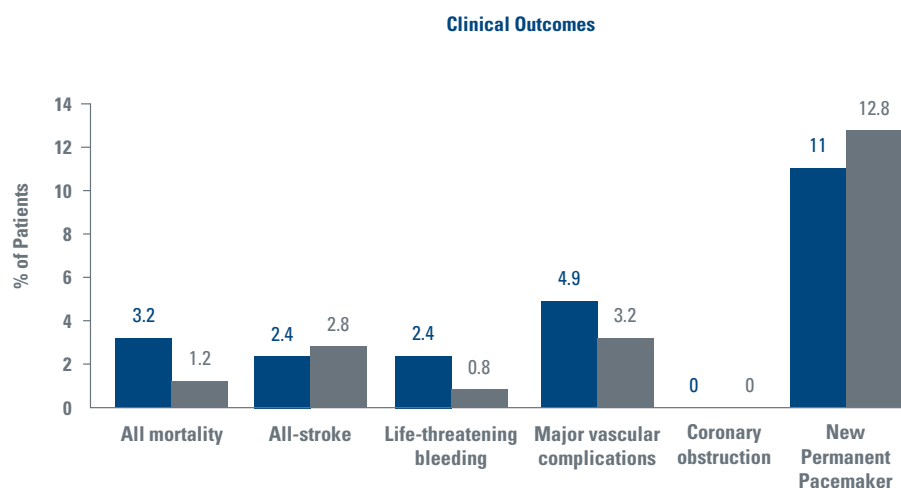
Clinical Summary

PS-matched Population, 30-day

■ ACURATE *neo* (n = 251) ■ Evolut PRO (n = 251)



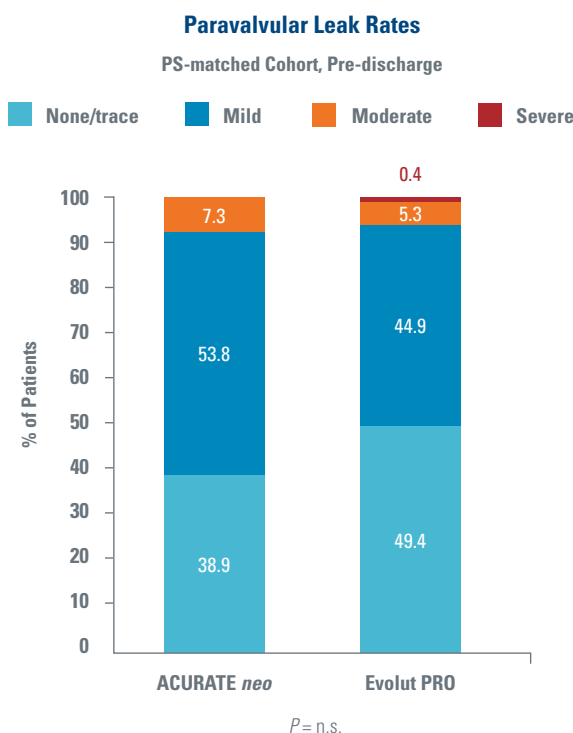
P = n.s.



P = n.s.

Clinical Highlights (cont.)

ACURATE *neo* comparable to Evolut PRO in paravalvular aortic regurgitation



Key Results

	ACURATE <i>neo</i> n = 251	Evolut PRO n = 251	<i>P</i> Value
Procedural Characteristics (PS-matched cohort)			
Conscious sedation	96.4%	92.8%	0.112
Valve size			-
S (NEO) or 23 mm (PRO)	23.9%	2.0%	
M (NEO) or 26 mm (PRO)	41.8%	38.3%	
L (NEO) or 29 mm (PRO)	34.3%	59.8%	
Pre-dilatation	86.5%	37.9%	< 0.001
Post-dilatation	41.4%	25.0%	< 0.001
Valve repositioning	-	8.6%	-
Second THV implanted	0.8%	1.2%	1.000
Valve embolization	0.4%	0.8%	1.000
Annular rupture	0.0%	0.0%	-
Pericardial tamponade	2.0%	0.0%	0.061
Conversion to surgery	0.8%	0.0%	0.499
Mean AV gradient (mmHg)	8.3 ± 4.0	7.3 ± 3.6	0.003

**Boston
Scientific**
Advancing science for life[™]

www.bostonscientific.eu/ACURATEneo

All trademarks are the property of their respective owners. CAUTION: The law restricts these devices to sale by or on the order of a physician. Indications, contraindications, warnings, and instructions for use can be found in the product labeling supplied with each device. Information for use only in countries with applicable health authority product registrations. Not intended for use or distribution in France, Japan, and the USA.

SH-647902-AA Printed in Germany by medicalvision

© 2019 Boston Scientific Corporation or its affiliates. All rights reserved.
DINSH0238EA