



LUX-Dx II+™ ICM System

Thoughtfully Designed with Removal in Mind

The LUX-Dx ICM Systems'* unique and patented header design is engineered to minimise migration and facilitate ICM removal with commonly used surgical tools. The ridges on the header help secure placement of the device within the subcutaneous tissue, and provide grip during removal after the device has done it's job.

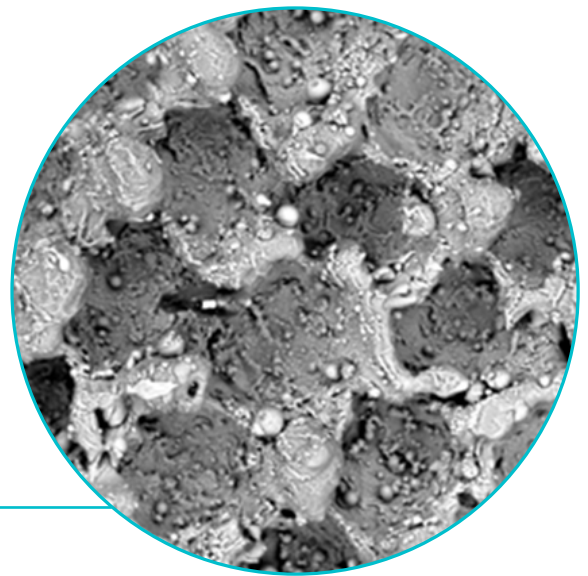
No special technique or extraction tool needed.

A simple, intentionally designed device to address the clinical needs of device removal so care teams can spend more time focusing on what matters.



Patented Header Technology

Ridges on the header help minimise migration and provide grips for tools commonly used in ICM explant¹.



Titanium Exterior

Designed and tested to be robust and reliable when subjected to external forces.

"Removing a loop recorder should be easy. The grips on the header make sure something that should be easy, is easy."

1. US 10,617,876 – Issued patent for Anti-migration and Device Extraction Features – Issued April 14, 2020
*References to the “LUX-Dx ICM Systems” includes the LUX-Dx™, LUX-Dx II™ and LUX-Dx II+™ ICM Systems

CAUTION: The law restricts these devices to sale by or on the order of a physician. Indications, contraindications, warnings, and instructions for use can be found in the product labelling supplied with each device or at www.IFU-BSCL.com. Products shown for INFORMATION purposes only and may not be approved or for sale in certain countries. This material not intended for use in France.

**Boston
Scientific**
Advancing science for life™

www.bostonscientific.eu

© 2025 Boston Scientific Corporation
or its affiliates. All rights reserved.

CRM-2194001-AA

CE 2797