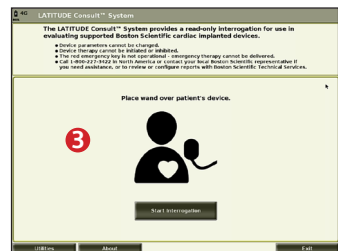
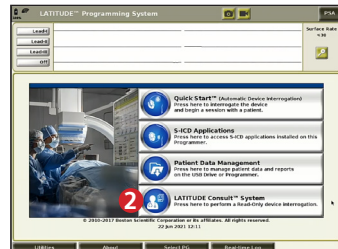




Using the LATITUDE Consult™ Application on the LATITUDE™ Programming System, Model 3300

Steps to interrogate a device with LATITUDE Consult:

- 1 POWER ON** Programmer
- 2 PRESS** Start READ-ONLY Mode or
PRESS LATITUDE Consult System button if already in programming mode



- 3 FOLLOW** onscreen instructions to interrogate and send data
- 4 CALL** LATITUDE Consult Technical Services at **1.800.227.3422** to request a review and/or reports

Note: Use of LATITUDE Consult from the Programmer + Consult configuration is intended for users trained in device-based testing and reprogramming.



Using the Heart Connect™ System on the LATITUDE™ Programming System, Model 3300

Steps to make a Heart Connect call:

- 1 **SELECT** Quick Start
- 2 **SELECT** Close on Summary page
- 3 **SELECT** Utilities tab
- 4 **SELECT** Heart Connect tab then **PRESS** Meet Now
- 5 **PRESS** Intended Contacts and **PRESS** Call
- 6 **READ** Terms of Service and **PRESS** I Agree

The screenshots show the following steps:

- Step 1:** The 'Quick Start' menu is highlighted, showing options like 'Quick Start', 'S-CD Applications', 'Patient Data Management', and 'LATITUDE Consult™ System'.
- Step 2:** The 'Summary' page is shown with a 'Close' button highlighted in the bottom right corner.
- Step 3:** The 'Utilities' tab is selected at the top of the interface.
- Step 4:** The 'Heart Connect' sub-tab is selected, and the 'Meet Now' button is highlighted.
- Step 5:** The 'Manage Meeting' dialog box is shown with the 'Intended Contacts' list, and the 'Call' button is highlighted.
- Step 6:** The 'Terms of Service' dialog box is shown, and the 'I Agree' button is highlighted.



LATITUDE™ PROGRAMMING SYSTEM
[Indications, Safety and Warnings](#)
<https://qrco.de/latitudeprogramming>



LATITUDE Consult™ System
[Indications, Safety and Warnings](#)
<https://qrco.de/latitudeconsult>



HEART CONNECT™ SYSTEM
[Indications, Safety and Warnings](#)
<https://qrco.de/heartconnectsystem>

**Boston
Scientific**
Advancing science for life™

Cardiology
300 Boston Scientific Way
Marlborough, MA 01752-1234
www.bostonscientific.com

Medical Professionals:
1.800.CARDIAC (227.3422)
Patients and Families:
1.866.484.3268

© 2025 Boston Scientific Corporation or its affiliates. All rights reserved.

CRM-1169407-AB