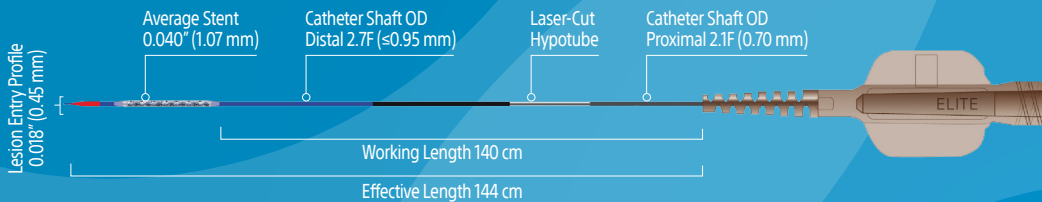


Ordering Information



(mm)	8	12	16	20	24	28	32	38
2.25	H7493941308220	H7493941312220	H7493941316220	H7493941320220	H7493941324220	H7493941328220	H7493941332220	n/a
2.5	H7493941308250	H7493941312250	H7493941316250	H7493941320250	H7493941324250	H7493941328250	H7493941332250	H7493941338250
2.75	H7493941308270	H7493941312270	H7493941316270	H7493941320270	H7493941324270	H7493941328270	H7493941332270	H7493941338270
3.0	H7493941308300	H7493941312300	H7493941316300	H7493941320300	H7493941324300	H7493941328300	H7493941332300	H7493941338300
3.5	H7493941308350	H7493941312350	H7493941316350	H7493941320350	H7493941324350	H7493941328350	H7493941332350	H7493941338350
4.0	H7493941308400	H7493941312400	H7493941316400	H7493941320400	H7493941324400	H7493941328400	H7493941332400	H7493941338400

Promus ELITE™

Everolimus-Eluting Platinum Chromium
Coronary Stent System

Platform Matters.
Results Matter.



Boston Scientific
Advancing science for life™

All trademarks are the property of their respective owners.

CAUTION: The law restricts these devices to sale by or on the order of a physician. Indications, contraindications, warnings and instructions for use can be found in the product labelling supplied with each device. Products shown for INFORMATION purposes only and may not be approved or for sale in certain countries. This material not intended for use in France.

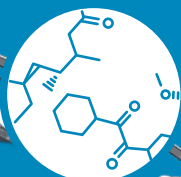
IC-959201-AB-MAR 2024. CreativeServices.

www.bostonscientific.eu

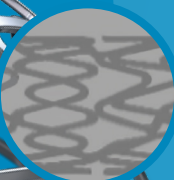
© 2024 Boston Scientific Corporation or its affiliates. All rights reserved.

Platform Matters.

The Promus ELITE™ stent system features an optimized platform for best-in-class deliverability and acute performance.



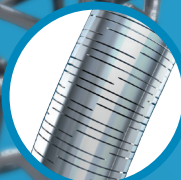
Outstanding Safety:
Everolimus Drug + Fluoropolymer
Trusted Drug & Polymer Combination



Unmatched Visibility
BSC Proprietary PtCr (Platinum Chromium)
Alloy Engineered Specifically for Stents



**Ideal Balance of
Strength & Flexibility**
Customized Stent Architecture



Maximum Deliverability
BSC Proprietary Laser-Cut Hypotube
Significantly Improves Deliverability

70%
of implanted stents use
Everolimus

Results Matter.

Tried and true with consistent outcomes. Promus ELITE is the newest member of the Promus family of stents, building on a wealth of clinical data that you can trust.

Consistently
LOW EVENT RATES
And Numerically Low Ischemia-Driven TLR Through 5-Years
Platinum Family of Trials: Including 11 Studies of Nearly 10,000 Patients*

ARC ST (Def/Prob)	Cardiac Death	TLF	NQMI	TV-MI	QMI	ID-TLR
-------------------	---------------	-----	------	-------	-----	--------

40,000+
Patients Studied
Across Clinical Trials and Real-World Registries†

10 Million
Worldwide Implants (and Counting)‡

RANKED #1
Lowest Relative Risk of Def/Prob ST
Kang Network Meta-Analysis:
Permanent Polymer Stents§

LOWEST ST & TLR
at 5-Years
Real-World SCAAR Registry¶



* Platinum Chromium Everolimus-Eluting clinical experience includes: PLATINUM Workhorse, PLATINUM Long Lesion, PLATINUM Small Vessel, PLATINUM Small Vessel Japan, PLATINUM QCA, PLATINUM China, PLATINUM Diversity trials; PROMUS Element Plus US Post-Approval, PROMUS Element China Post-Approval, PE Prove Post-Approval studies and NG PROMUS Clinical Trial.
† Culmination of multiple clinical trials (PLATINUM, EVOLVE, EVOLVE II, DUTCH PEERS, HOST-ASSURED), registries (REWARDS and SCAAR) and studies (PROMUS Element Plus US Post-Approval, PE PROVE)
‡ Implants based on Promus DES units sold through September 2020. Includes (Promus, Promus Element, Promus Element Plus, Promus PREMIER and Promus ELITE stent systems).
§ Caution should be taken in interpreting study results, as some stents had limited numbers of comparisons, and some of the studies had a potential risk of bias. All Promus PtCr-EES stents, also includes PROMUS Element, PROMUS Element Plus and Promus PREMIER. Def/prob ST was available in 110 studies with 111,088 patients.
¶ Promus PtCr EES PP Stent Family includes the Promus PREMIER PP Stent.

1. Kang, S et al. J Am Coll Cardiol Intv. doi:10.1016/j.jcin.2016.03.038. Swedish SCAAR database, real-world outcomes of latest DES generations, Feb 9, 2020.
2. Sarno G et al. Cathet. Cardiovasc. Intervent. doi:10.1002/ccd.27030.