

ADAPT-DES 2-YEAR RESULTS

- The largest prospective study of IVUS use to date
- IVUS use group reported a significant reduction in MI (38%), ST (53%), MACE (35%), and TLR (20%)
- IVUS use was identified as an independent predictor of lower ST incidence
- IVUS impacted clinical decision making 74% of the time

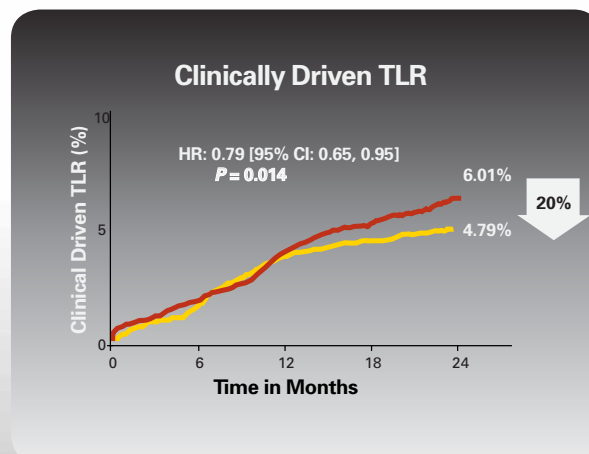
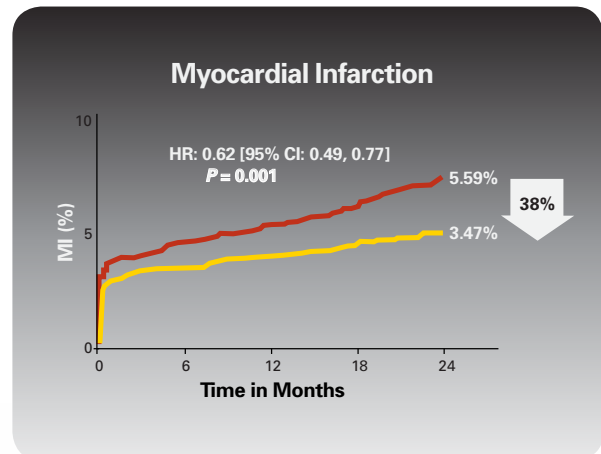
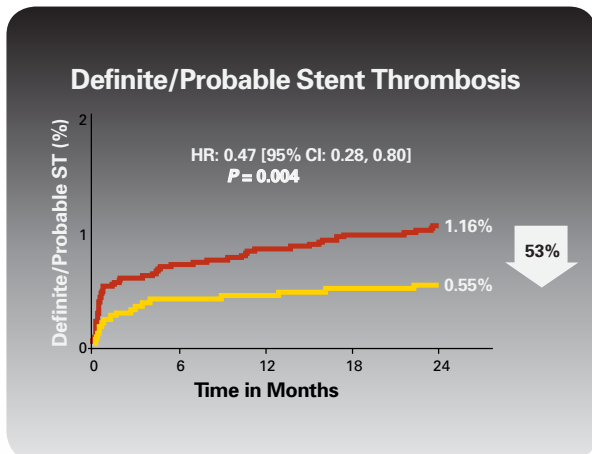
Study Design

- Non-randomized study comparing outcomes in patients undergoing PCI with IVUS use versus no IVUS use
- 8,582 patients enrolled with no exclusion criteria at 11 sites in the US and Germany
- Successful and uncomplicated PCI with ≥ 1 commercially available DES implanted
- IVUS arm (3,361 patients) and angiographic arm (5,221 patients) with clinical follow up at 30 days, 1-year, and 2-years

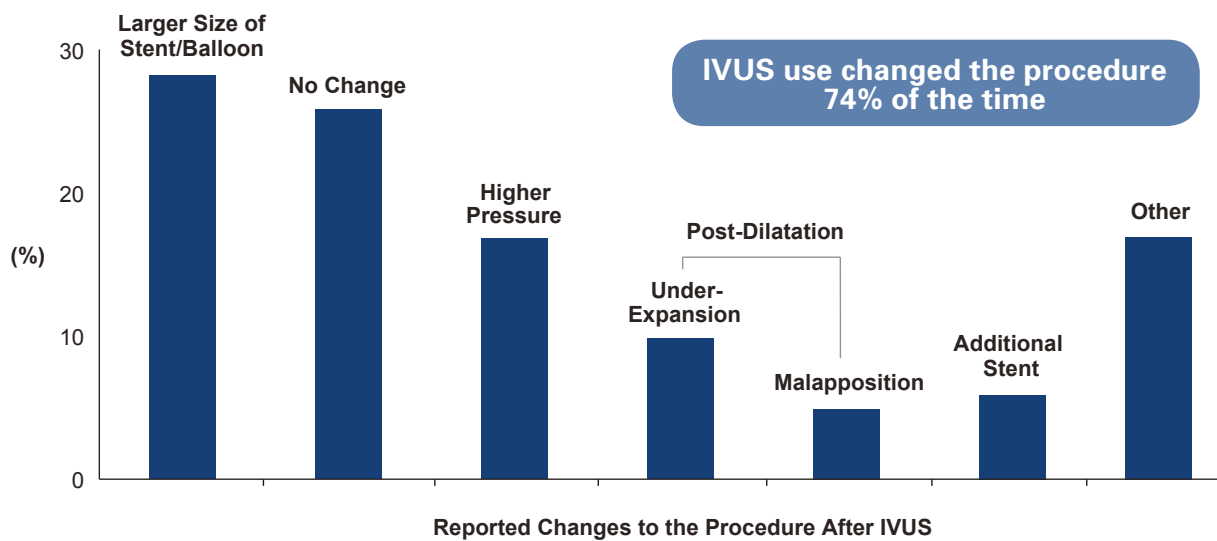
Results From IVUS and No IVUS Study Arms

■ No IVUS Use

■ IVUS Use



IVUS Arm Reported Improved Clinical Outcomes



- IVUS use was associated with longer stent length and larger stent size without increasing peri-procedural MI or the number of stents
- IVUS use was associated with reduction of MACE in complex lesions

**Boston
Scientific**
Advancing science for life™

All cited trademarks are the property of their respective owners. CAUTION: The law restricts these devices to sale by or on the order of a physician. Indications, contraindications, warnings and instructions for use can be found in the product labelling supplied with each device. Information for the use only in countries with applicable health authority product registrations.

Information contained herein is for distribution outside the U.S. only. Illustrations for information purposes – not indicative of actual size or clinical outcome.

IC-218803-AA JAN 2014 Printed in Germany by medicalvision.

www.bostonscientific-international.com

© 2014 Boston Scientific Corporation or its affiliates. All rights reserved.
DINCAR2626EA