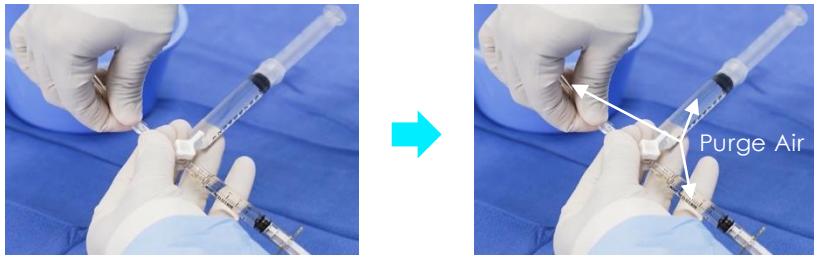




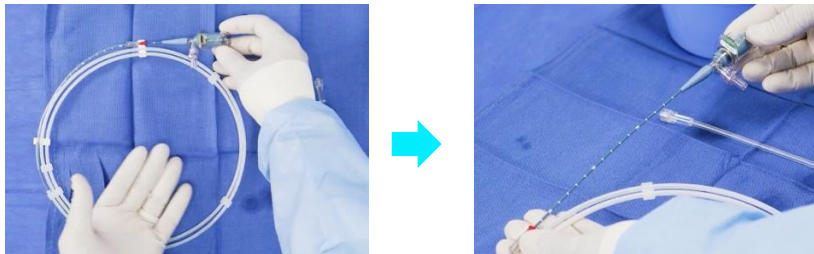
IVUS Set-Up and Workflow

Imaging Catheters Preparation Instructions

- 1** **Wet assemble** the accessories (ensure air is removed from all the components).



- 2** **Fully open the telescope.**

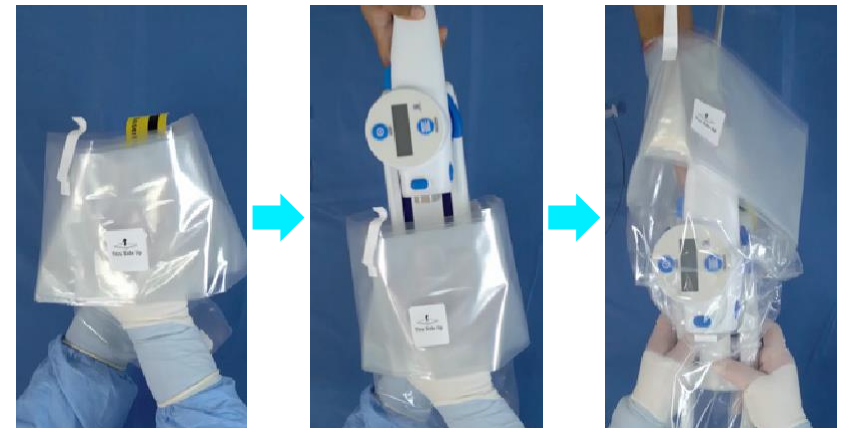


- 3** **2x Flush with telescope open. Flush the first 3 cc syringe slowly** (first 1 cc is the most important to flush slowly). Refill the 3 cc syringe and flush a second time.



- 4** If not already done, connect the MDU Fast Pullback Motor Drive to the sled. Position the MDU in the back end of the Pullback Sled.

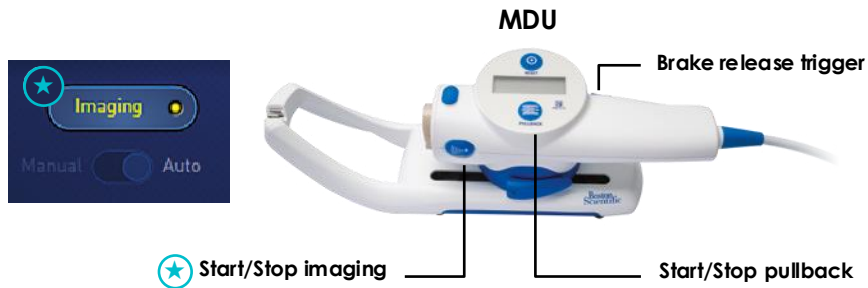
- 5** Cover the MDU Fast Pullback Motor Drive and the pre-connected Permanent Sled with the **Sterile Bag**.



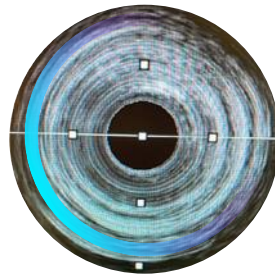
- 6** **Connect the catheter** to the MDU Fast Pullback.



- 7 a. Turn on « Imaging » via the console, (★) or on the MDU Fast Pullback Motor Drive by pressing on the Imaging button. (★)



- b. Manually close telescope and Confirm catheter is working (transducer rotation purges air bubbles).



- 8 a. Turn off the « Imaging » MDU Fast Pullback Motor Drive by re-clicking on the Imaging on the console or the MDU button. (★)

To prevent catheter damaging and/or complications, do not advance the IVUS catheter whilst imaging is activated.

- b. Press the **Brake Release Trigger** (★) and **push forward the MDU at the front** of the Permanent Sled. **Lock the red anchor** (★) of the catheter to the Permanent Sled U-shaped Metallic Connector and its appropriate position on the Permanent Sled Bag, identified with a „2“.



- 9 Perform one final 3cc flush (final step to clear any air that may have gotten in due to telescope movement).

- 10 Following standard best practices: introduce the imaging catheter on the guidewire and into the patient. It's recommended to position the IVUS probe past the zone of interest if anatomy allows safely.





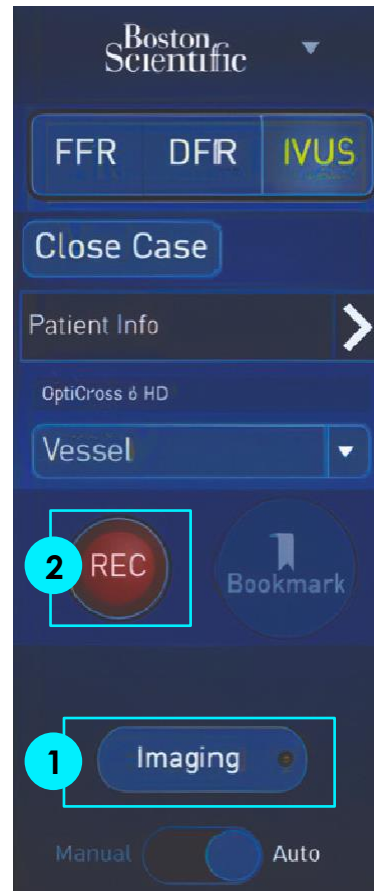
IVUS Set-Up and Workflow

IVUS Software Workflow

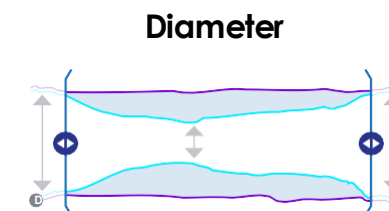
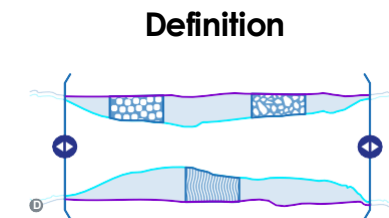
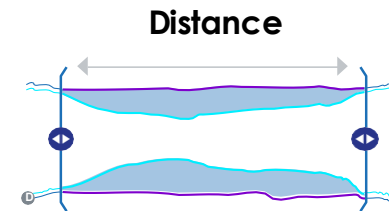


IVUS 123 Essential Workflow

- 1 Turn Imaging On**
 - + Click IMAGING to start imaging and to confirm the sensor is at the right position.
- 2 Record Image**
 - + Click REC to start and stop recording.
 - + The pullback method is auto-selected, slide to manual to continue with manual pullback.
 - + Bookmarks can be added while recording. To stop recording, click the stop button.
- 3 Record New Run**
 - + Reposition the sensor to the desired area of interest.
 - + Click on LIVE at the top of the screen to be able to turn on imaging and/or recording.



Pre-PCI Workflow



Post-Stent Workflow

