

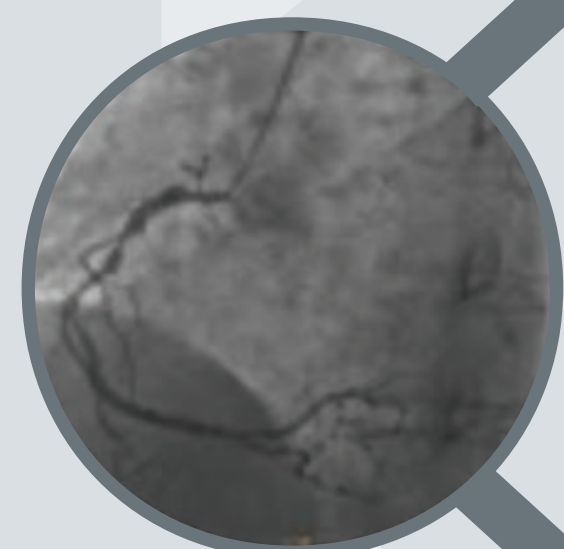


# Calcific Lesion Modification Strategy

## ➤ IVUS

## ➤ Assess

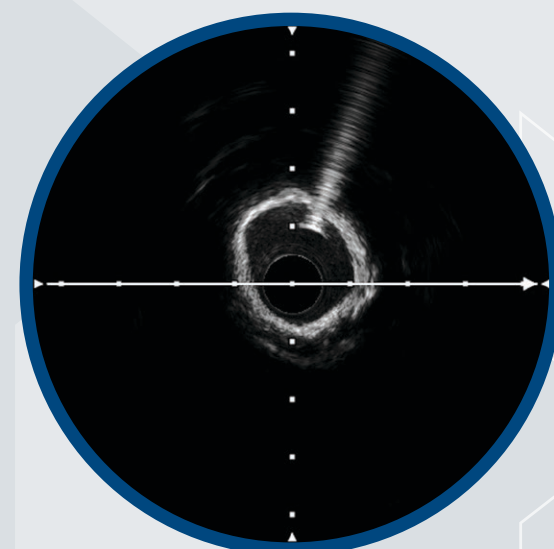
## ➤ Modify



Calcific disease

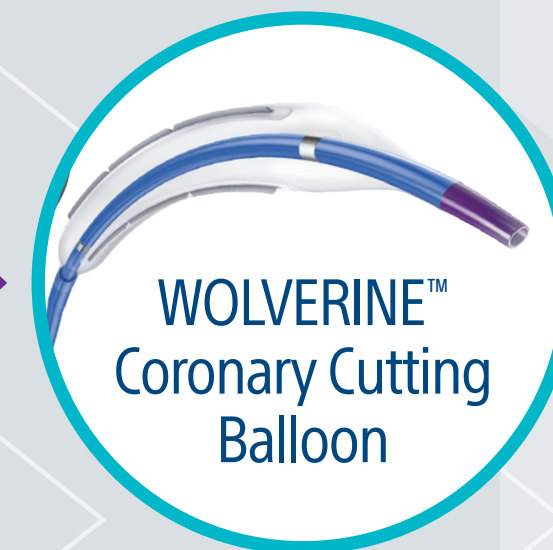
Device passes  
or undilatable  
(1:1 size)

Device  
won't pass



Rotational  
atherectomy

- Measure arc  
( $< 270^\circ$  vs.  $> 270^\circ$ )
- Extent of disease  
(focal vs. diffuse)
- Lesion location  
(ostial)
- Size MLD  
( $< 2\text{ mm}$  vs.  $> 2\text{ mm}$ )



WOLVERINE™  
Coronary Cutting  
Balloon

Larger MLD device  
delivers eccentric  
arc  $< 180^\circ$



Rotational  
atherectomy

Smaller MLD ostial/  
diffuse concentric  
arc preferred  $> 270^\circ$



Intravascular  
lithotripsy

Larger MLD ostial/  
focal concentric arc  
preferred  $> 270^\circ$

**IVUS** 1 2 3  
E S S E N T I A L S

Adapted from Calcium Algorithm presented by Simon Walsh, MD, Boston Scientific employee. Presented at EuroPCR '18, '19.

CAUTION: The law restricts these devices to sale by or on the order of a physician. Indications, contraindications, warnings, and instructions for use can be found in the product labelling supplied with each device or at [www.IFU-BSCI.com](http://www.IFU-BSCI.com). Products shown for INFORMATION purposes only and may not be approved or for sale in certain countries. This material not intended for use in France. 2022 Copyright © Boston Scientific Corporation or its affiliates. All rights reserved.