



MANAGEMENT OF A LARGE GASTRIC POLYP



David A. Florez, M.D.

Medical Director, Elms Endoscopy Center/Trident Gastroenterology, Charlestown, South Carolina

HISTORY

An 81-year-old woman was referred for evaluation of weight loss and persistent nausea. Prior attempts at managing her symptoms with proton pump inhibitor therapy and promotility agents by her primary physician had failed. An EGD demonstrated a large gastric polyp at the pylorus (Figure 1), causing a functional gastric outlet obstruction. Radial Jaw® 3 Standard Capacity Biopsy Forceps showed the polyp to be a benign hyperplastic inflammatory polyp. She was subsequently referred to me for endoscopic ultrasound evaluation (EUS) of the polyp and possible gastric polypectomy for definitive therapy.

PROCEDURE

The patient underwent EUS examination. The gastric polyp was scanned with a radial echoendoscope, revealing a large mucosal based lesion (Figure 2). There were no significant blood vessels within the polyp. Additionally, there were no malignant features and no evidence of invasion to deeper layers of the gastric wall. No significant celiac or peri-gastric lymphadenopathy was appreciated. A standard EGD scope was then passed and the polyp was removed in a piece-meal fashion with a Sensation™ Polypectomy Snare. The polyp fragments were then withdrawn through the mouth with a basket retrieval device.

The polypectomy ulcer was then re-inspected. There was mild, persistent oozing of blood at the site. Given the patient's advanced age and the fact that she lived in a rural area with considerable drive time to the nearest medical facility, I elected to attempt primary closure of the site with Resolution® Clips. The defect edges were reapproximated with three Resolution Clips achieving adequate hemostasis. The patient tolerated the procedure well and there were no peri-operative complications. Twice daily proton pump inhibitor therapy was prescribed.

POST PROCEDURE

Final pathologic diagnosis of the polyp revealed a benign inflammatory polyp without dysplasia. On follow up, the patient's nausea had resolved and her weight had normalized.

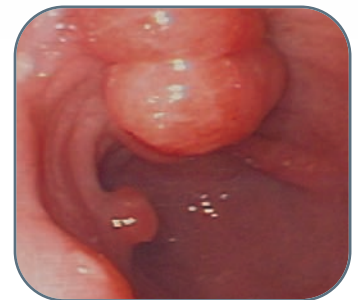


Figure 1



Figure 2

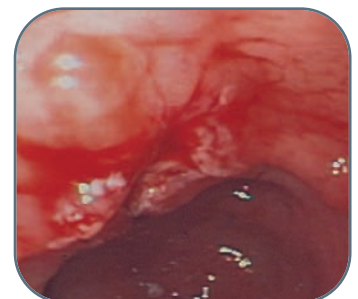


Figure 3



Figure 4