

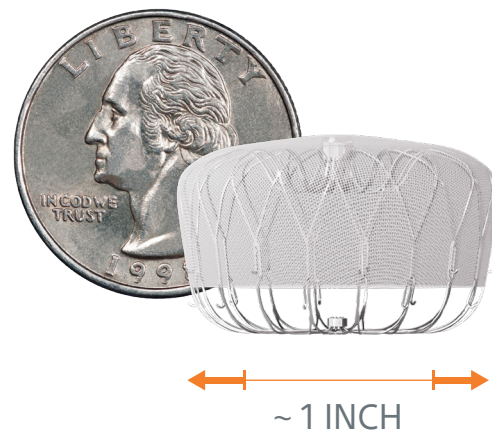
# WATCHMAN™

LEFT ATRIAL APPENDAGE CLOSURE IMPLANT

## Is Life without Blood Thinners Possible? **Yes.**

Many people take blood thinners to reduce the risk of stroke related to AFib, but did you know there is an alternative?

It's called the **WATCHMAN Implant.**



Get to know the safe, one-time, minimally invasive WATCHMAN Implant.

**20+**

years of clinical and real-world experience<sup>2</sup>

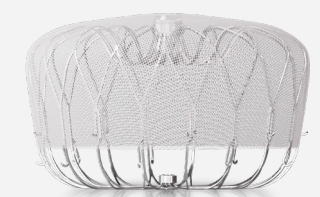
**10+**

clinical trials<sup>2</sup>

### Is the WATCHMAN Implant Right For You?

If the following statements are relevant to you, ask your doctor about the WATCHMAN Implant.

- ✓ I have AFib not caused by a heart valve problem
- ✓ My doctor recommended that I take a blood thinner
- ✓ I'm suitable for short term blood thinners but need an alternative to long-term use
- ✓ I have an appropriate rationale to seek an alternative



### AFib and Stroke Risk

The average person with **AFib is 5x more** likely to suffer a stroke than someone with a regular heartbeat. Here's why:



AFib causes your heart to beat irregularly, which affects its ability to pump blood normally.

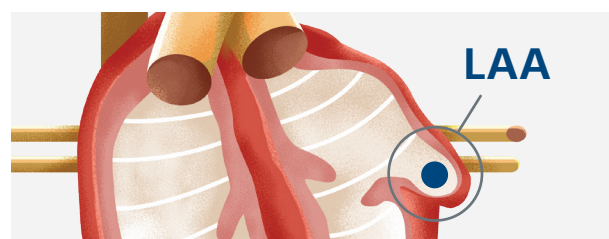


When the heart doesn't pump as it should, blood can collect and form clots.

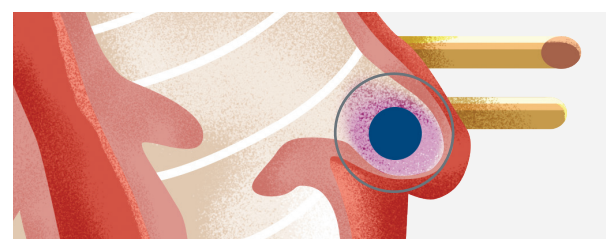


If a clot escapes, it can cut off the blood supply to the brain-causing a stroke.

### How the WATCHMAN Implant Works



The WATCHMAN Implant fits into a part of your heart called the left atrial appendage (LAA).



90% of stroke-causing blood clots that come from the heart are formed in the LAA.<sup>1</sup>



The WATCHMAN Implant permanently closes off this part of your heart to keep those blood clots from escaping.

There are risks associated with all medical procedures. Talk with your doctor about the risks and benefits associated with the WATCHMAN Implant.

### For More Information

Talk to your doctor or visit [WATCHMAN.com](http://WATCHMAN.com)



Point your phone's camera here to watch a short video about the WATCHMAN Implant.

Over **300,000** people have received the WATCHMAN Implant.  
It's One Time, For a Lifetime.

<sup>1</sup> Blackshear JL, Odell JA. Appendage obliteration to reduce stroke in cardiac surgical patients with atrial fibrillation. Ann Thorac Surg. 1996;61:755-759.

<sup>2</sup> Represents the combination of data for all WATCHMAN models including WATCHMAN FLX Devices.

#### Important Safety Information

The WATCHMAN FLX and WATCHMAN FLX Pro Devices are permanent implants designed to close the left atrial appendage in the heart in an effort to reduce the risk of stroke.

With all medical procedures there are risks associated with the implant procedure and the use of the device. The risks include but are not limited to accidental heart puncture, air embolism, allergic reaction, anemia, anesthesia risks, arrhythmias, AV (Arteriovenous) fistula, bleeding or throat pain from the TEE (Trans Esophageal Echo) probe, blood clot or air bubbles in the lungs or other organs, bruising at the catheter insertion site, clot formation on the device, cranial bleed, excessive bleeding, gastrointestinal bleeding, groin puncture bleed, hypotension, infection/pneumonia, pneumothorax, pulmonary edema, pulmonary vein obstruction, renal failure, stroke, thrombosis and transient ischemic attack. In rare cases death can occur. Be sure to talk with your doctor so that you thoroughly understand all of the risks and benefits associated with the implantation of the device.