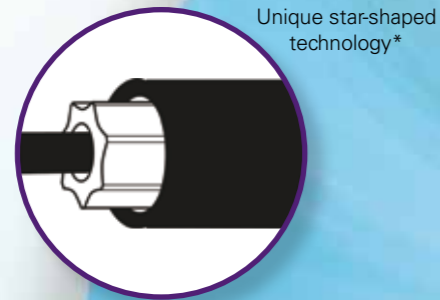


TORTUOUS ANATOMY

Unique star-shaped inner catheter design* helps promote reliable needle actuation in tortuous anatomy (even after kinking)



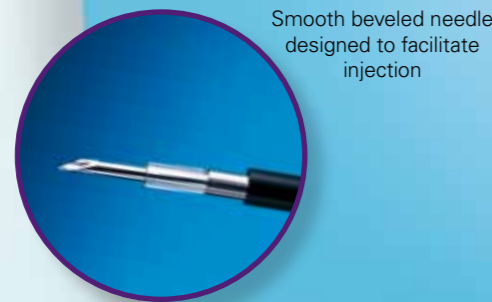
Unique star-shaped technology*

EFFICIENT ACCESS

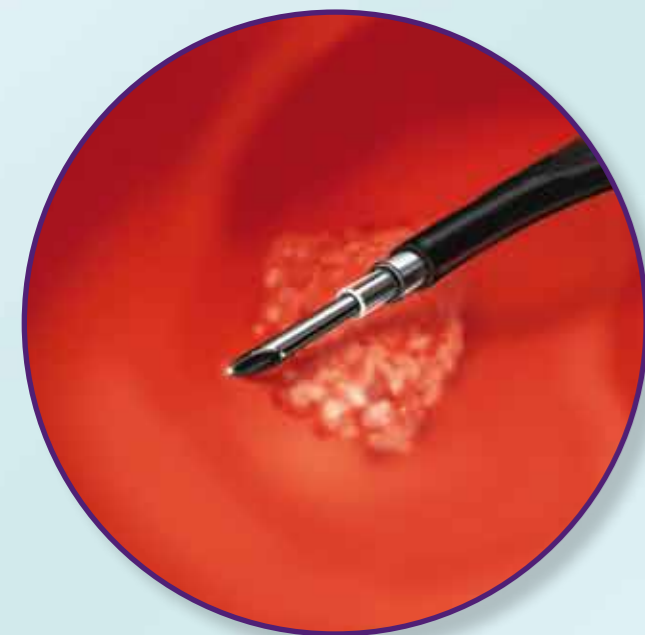
Pushable sheath construction designed to facilitate advancement through difficult pathways to remote anatomy

SMOOTH NEEDLE PENETRATION

Beveled needle designed to facilitate injection



Smooth beveled needle designed to facilitate injection



Convenient locking hub for procedural efficiency

Resolution™ Clip

Order Number	Working Length (cm)	Minimum Working Channel (mm)	Clip Opening (mm)	Units
M00522600	155	2.8	11	Box 1
M00522601	155	2.8	11	Box 10
M00522602	155	2.8	11	Box 20
M00522610	235	2.8	11	Box 1
M00522611	235	2.8	11	Box 10
M00522612	235	2.8	11	Box 20

Injection Gold Probe™

Order Number	O.D. (F/mm)	Needle			Minimum Working Channel (mm)	Working Length (cm)	Connector	Units
		Gauge	O.D. (mm)	I.D. (mm)				
M00560150	7/2.33	25	0.51	0.24	2.8	210	Standard	Box 1
M00560160	10/3.33	25	0.51	0.24	3.7	210	Standard	Box 1

Gold Probe™

Order Number	O.D. (F/mm)	Minimum Working Channel (mm)	Working Length (cm)	Connector	Units
M00560070	7/2.33	2.8	300	Standard	Box 1
M00560071	7/2.33	2.8	300	Standard	Box 5
M00560100	10/3.33	3.7	300	Standard	Box 1
M00560101	10/3.33	3.7	300	Standard	Box 5
M00560220	7/2.33	2.8	350	Standard	Box 1

Interject™

Order Number	Sheath Design	Sheath O.D. (mm)	Needle			Maximum Needle Extension Length (mm)	Working Length (cm)	Units
			Gauge	O.D. (mm)	I.D. (mm)			
M00518151	Contrast	1.8	23	0.64	0.32	4	200	Box 5
M00518161	Contrast	1.8	25	0.51	0.24	4	200	Box 5
M00518251	Contrast	1.8	23	0.64	0.32	6	200	Box 5
M00518261	Contrast	1.8	25	0.51	0.24	6	200	Box 5
M00518351	Contrast	2.3	23	0.64	0.32	4	240	Box 5
M00518361	Contrast	2.3	25	0.51	0.24	4	240	Box 5
M00518111	Clear	1.8	25	0.51	0.24	4	200	Box 5
M00518301	Clear	2.3	23	0.64	0.32	4	240	Box 5
M00518311	Clear	2.3	25	0.51	0.24	4	240	Box 5

Speedband™ Superview™ Super 7™

Order Number	Minimum Working Channel (mm)	Scope O.D. (mm)	Bands/Ligating Unit	Units
M00542250	2.8	8.6-11.5	7	Box 1
M00542251	2.8	8.6-11.5	7	Box 2
M00542253	2.8	8.6-11.5	7	Box 4

Irrigation catheter supplied in each kit

⊗ For single use only. Do not reuse.

¹ Jensen et al 2009, Gastrointestinal Endoscopy, Volume 70, No. 5 : 969
² Jensen et al 2008, Gastrointestinal Endoscopy, Volume 67, Issue 5, April 2008, Pages AB254
³ Adler et al 2009, DDW 2009 Poster

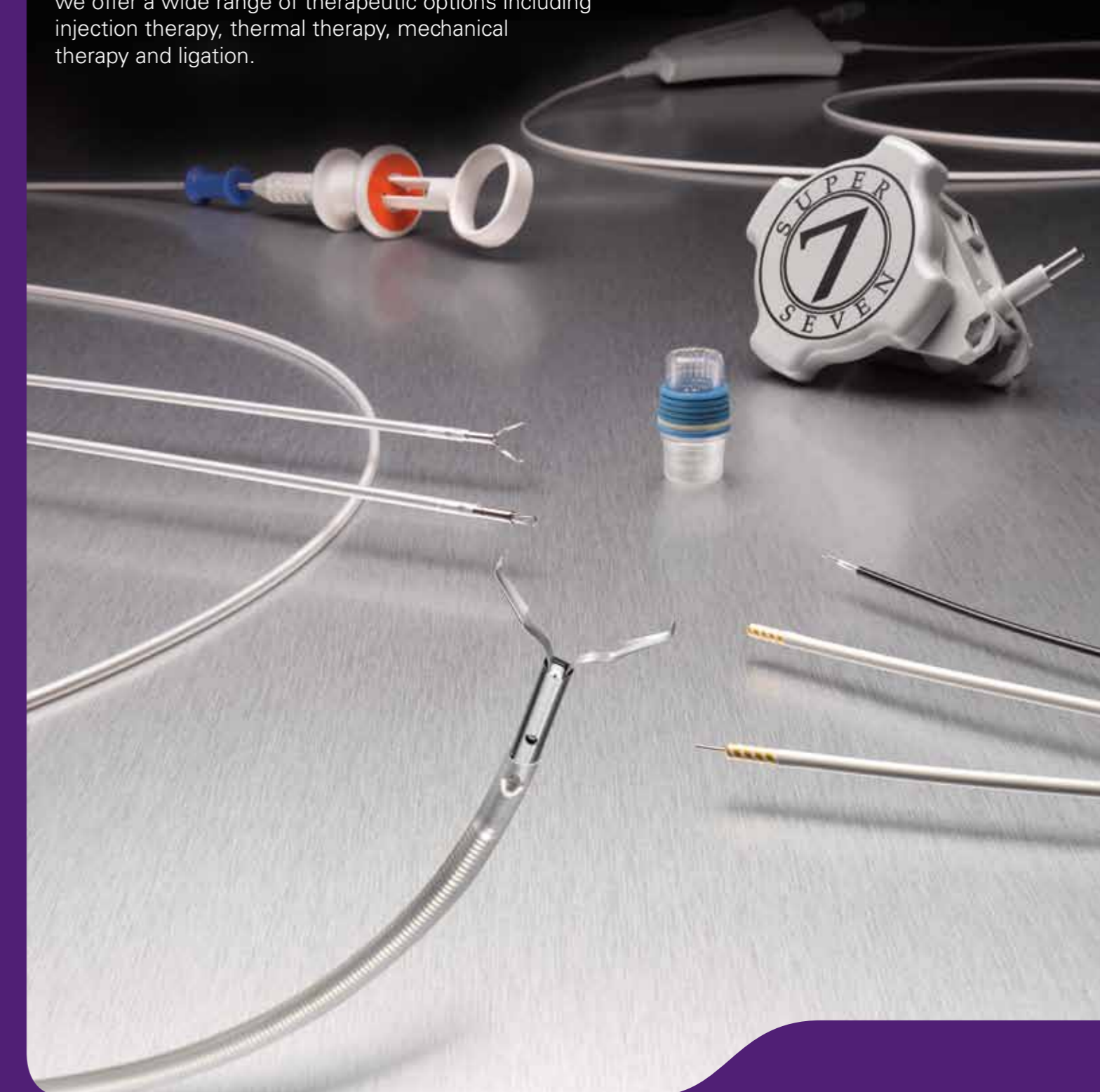
To learn more about Hemostasis Solutions, go on: www.youtube.com/bostonscientificendo
 Or use your smart phone to scan this code.
All cited trademarks are the property of their respective owners. CAUTION: The law restricts these devices to sale by or on the order of a physician. Indications, contraindications, warnings and instructions for use can be found in the product labelling supplied with each device. Information for the use only in countries with applicable health authority product registrations.
 ENDO-153329-AA April 2013. Printed in The Netherlands by DeBudeise / creativeservices.

*Patent on file Boston Scientific Corp.

Hemostasis Solutions

Boston Scientific is committed to improving patient care in the management of gastrointestinal bleeding.

Through innovation and continuous educational support, we offer a wide range of therapeutic options including injection therapy, thermal therapy, mechanical therapy and ligation.



Resolution™ Clip

Hemoclip

RESOLUTION CLIP IS INTENDED TO BE USED FOR*

- Hemostasis within the entire GI tract
- Endoscopic marking
- Closure of GI tract luminal perforations
- Anchoring jejunal feeding tubes



MR Conditional per ASTM F2503



REOPENING CAPABILITY

The radiopaque Resolution™ Clip is engineered to enable opening and closing up to 5 times prior to deployment, aiding in repositioning of the clip**

PROVEN RETENTION PERFORMANCE

- Significantly higher retention rate than competitor clips¹
- Deeper penetration into the tissue portion of the lesion^{2,3}



Two Resolution Clips placed on Chronic Gastric Ulcer base***

USER-FRIENDLY HANDLE

Designed to deliver a familiar actuation for opening and closing the jaws. Provides **tactile** and **audible** (1st click, 2nd click) feedback upon closing of jaws, indicating that the clip is being deployed

11MM-WIDE JAW SPAN

Intended to grasp a sizeable amount of tissue

OVER-SHEATH GRIP



Stopper

OVER-SHEATH

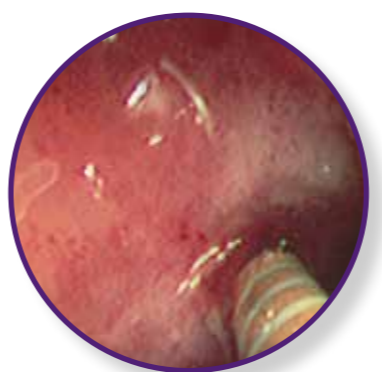
*See detailed information in the "Instructions for Use" supplied with the product.
 **Re-opening and closing capability may be limited by clinical circumstances and patient anatomy, among other factors.
 ***Image courtesy of Dennis M. Jensen, MD, CURE DDRC, UCLA & VA Medical Centers, and David Geffen School of Medicine at UCLA.

Injection Gold Probe™ & Gold Probe™

Bipolar Electrohemostasis Catheters

PROPRIETARY DISTAL TIP DESIGN

- Rounded Gold distal tip is designed to provide excellent conductivity, uniform burn, and effective coagulation in various tip positions
- Precision spacing of electrode pairs helps control coagulation depth



A 10F (3.3 mm) Injection Gold Probe Catheter is used to inject a vasoconstrictor around the vessel.

FIRM CATHETER SHAFT FOR TAMPONADE

- Designed to reduce kinking, facilitating advancement and helping to provide better *en face* and tangential tamponade
- Hemoglide coating helps reduce surface friction to facilitate passage through the endoscope

UNIQUE INTEGRATED INJECTION AND THERMAL HEMOSTASIS CAPABILITIES

- Designed to help reduce catheter exchanges and procedural time
- Engineered for smooth, consistent needle extension, even in difficult endoscope positions
- Integrated irrigation channel with port located distal to generator connectors facilitating manual or mechanical irrigation for visibility

INJECTION GOLD PROBE HANDLE



Speedband™ Superview™ Super 7™

Multiple Band Ligator

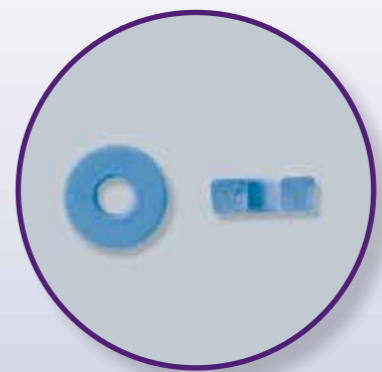


ERGONOMIC HANDLE WITH PRE-LOADED WIRE AND SCOPE FASTENER

- Handle attachment engineered to offer operator comfort
- Audible click, tactile and visual stop to confirm band deployment

CLEAR LIGATING UNIT WITH REAR-MOUNTED BANDS

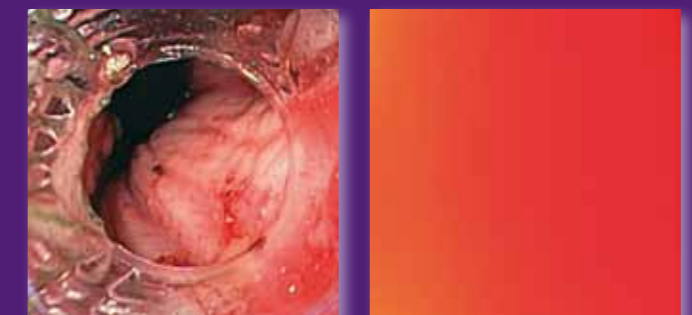
- Provides excellent visibility for rapid navigation and pathology identification
- Single string deployment allows excellent suction for tissue capture, band placement and band retention
- Alert Band offers a visual clue that only one band remains



SQUARE MOULDED BANDS

- Ensure consistent shape and reliable performance
- Latex-free material designed to reduce the risk of allergic reactions

Excellent Visibility and Suction



Single and Multiple Variceal Band Ligation



Endoscopic images above courtesy of Prof. Dr. J. Hochberger, University of Erlangen