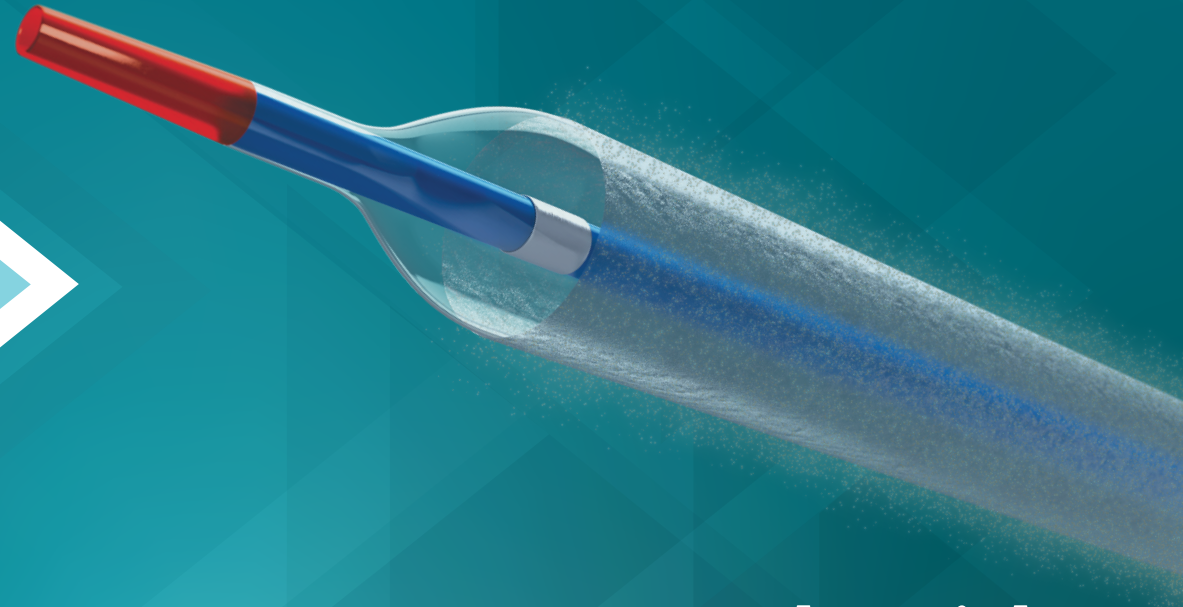


# AGENT™

## Drug-Coated Balloon



1. DCB Bench testing performed by Boston Scientific Corporation. Data on file at Boston Scientific.
2. Pre-clinical pharmacokinetic studies, data on file at Boston Scientific for AGENT, SeQuent Please and Selution. Published data from Magic Touch.
3. Blagosklonny et al. Paclitaxel induces primary and postmitotic G1 arrest in human arterial smooth muscle cells. *Cell Cycle*. 2004 Aug;3(8):1050-6. Epub 2004 Aug 24.
4. Method: balloons delivered in a coronary track model with fluid recirculation of 150 ml/min at T= 37 °C. Particulates are collected with a polycarbonate filter 5.0 µm x 47 mm (Sterilitech). Bench test results may not necessarily be indicative of clinical performance.
5. Hamm, C, et al, AGENT ISR study, Eurointervention, 2019, comparative clinical study results on file at Boston Scientific Corporation: Data available upon request.
6. Nakamura, M, et al, Drug-coated balloon for the treatment of small vessel coronary artery disease, *Circulation Japan* 2022.

Please review the AGENT Brief Summary for full instructions on use.

CAUTION: The law restricts these devices to sale by or on the order of a physician. Indications, contraindications, warnings and instructions for use can be found in the product labeling supplied with each device. Products shown for INFORMATION purposes only and may not be approved or for sale in certain countries. The material not intended for use in France.

All trademarks are the property of their respective owners.

**Boston  
Scientific**  
Advancing science for life™

**Interventional Cardiology**  
300 Boston Scientific Way  
Marlborough, MA 01752-1234  
[www.bostonscientific.com](http://www.bostonscientific.com)

*To order product or for more information  
contact customer service at 1.888.272.1001.*

© 2023 Boston Scientific Corporation  
or its affiliates. All rights reserved.

IC-1492906-AA

# Leave the Right AGENT Behind



# Perform complex interventions without compromise



**Effortless Deliverability**  
Navigate and cross complex lesions with ease



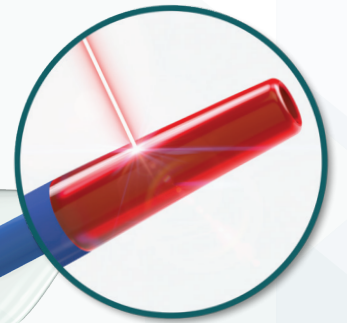
**Efficient Drug Transfer**  
Deliver the optimal dose when it matters most, with less balloon drug load



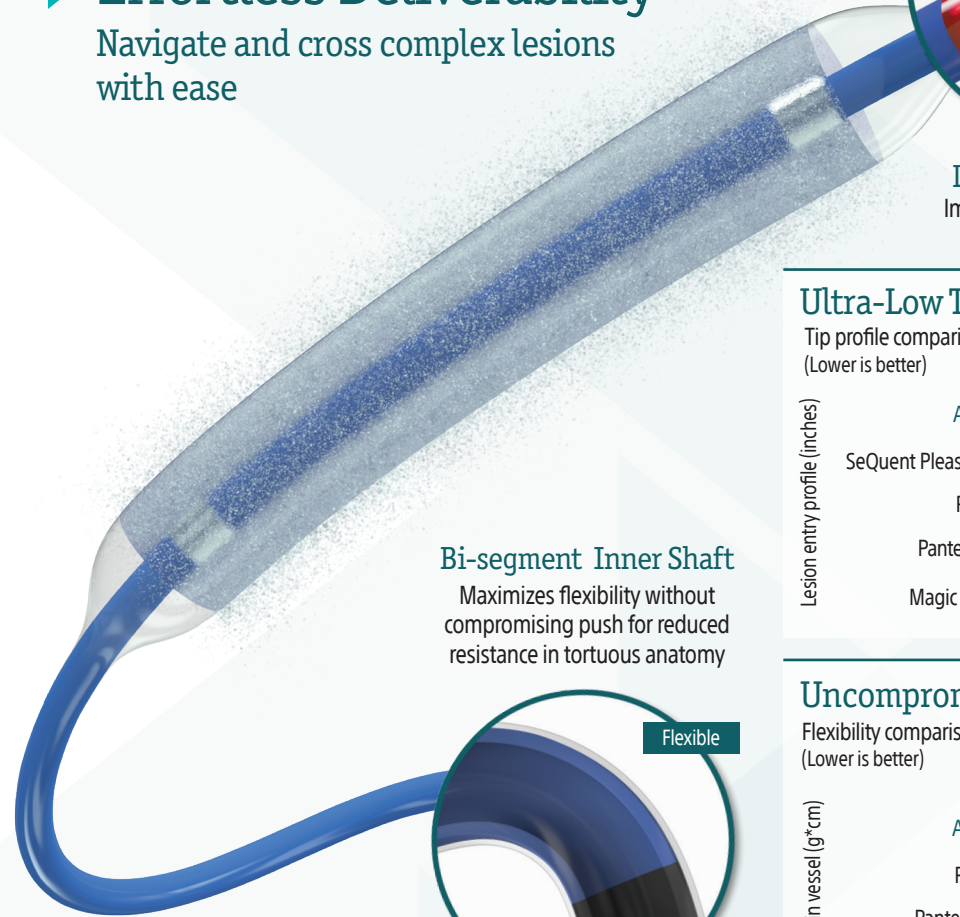
**Exceptional Long-Term Outcomes**  
Drive lower event rates consistently as demonstrated by AGENT clinical trials

## ➤ Effortless Deliverability

Navigate and cross complex lesions with ease



**Laser Bonded Tip**  
Improves crossability and reduces tip catch



### Bi-segment Inner Shaft

Maximizes flexibility without compromising push for reduced resistance in tortuous anatomy

Pushable

Flexible

**Z-Glide™**  
Improves tracking with proprietary lubricious coating

### Ultra-Low Tip Profile

Tip profile comparison - 3.50mm DCB<sup>1</sup>  
(Lower is better)

Lesion entry profile (inches)	AGENT	0.0167
	SeQuent Please Neo	0.0174
	Prevail	0.0178
	Pantera Lux	0.0186
	Magic Touch	0.0204

### Uncompromised Flexibility

Flexibility comparison - 3.50mm DCB<sup>1</sup>  
(Lower is better)

Delivery force in vessel (g*cm)	AGENT	157
	Prevail	172
	Pantera Lux	207
	SeQuent Please Neo	190
	Magic Touch	246

## ➤ Efficient Drug Transfer

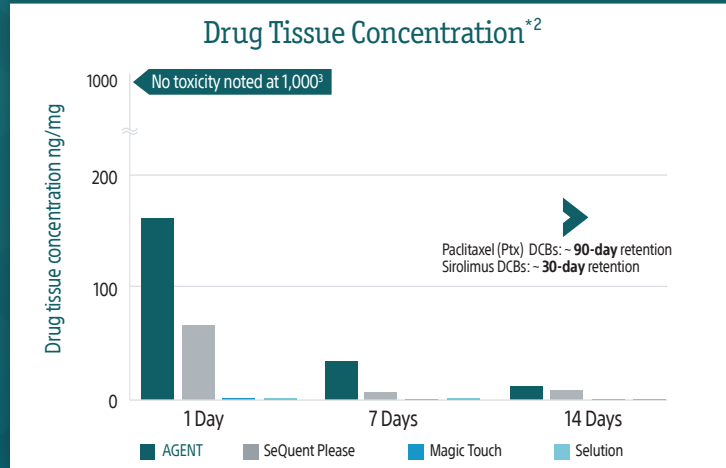
Deliver the optimal dose when it matters most, with less balloon drug load.



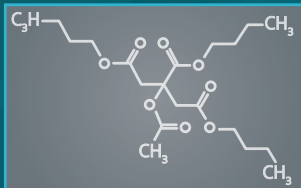
Lowest balloon Ptx load<sup>4</sup>

**AGENT:**  
2 ug/mm<sup>2</sup>

Other Ptx DCBs:  
3-3.5 ug/mm<sup>2</sup>

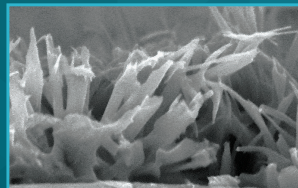


TransPax™ coating optimizes the three phases of drug delivery



### Targeted Transfer

Novel excipient (ATBC) minimizes drug loss while tracking and enhances drug transfer during inflation



### Rapid Absorption

Sharp edge Ptx improves tissue penetration for accelerated absorption



### Sustained Retention

Uniform crystalline formulation maintains therapeutic effectiveness through the healing process

<sup>4</sup>Independent studies performed using the same FDA recommended and accepted porcine coronary de novo vessel test method. BSC conducted AGENT, SeQuent Please and Selution. Magic touch published data, TCT 2020.

## ➤ Exceptional Long-Term Outcomes

Drive lower event rates consistently as demonstrated by AGENT clinical trials.

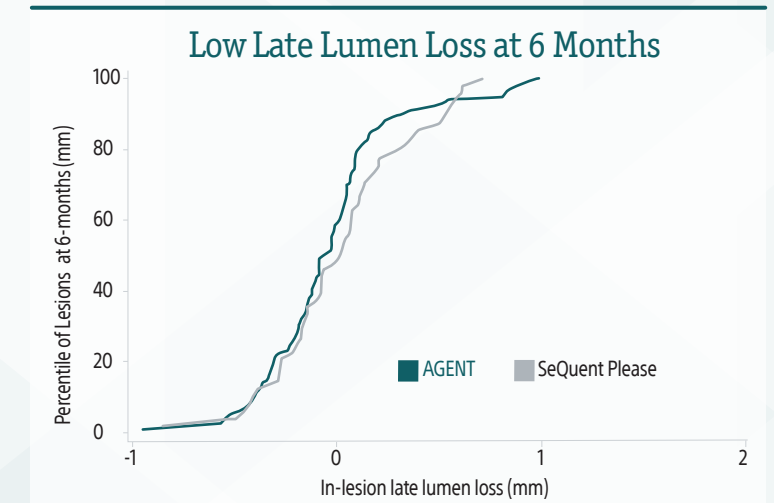
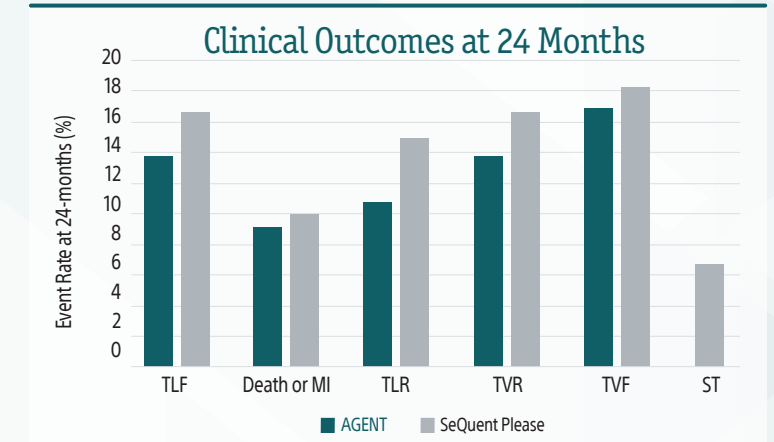
### AGENT ISR Study<sup>5</sup>

AGENT demonstrated numerically lower event rates at 24 months compared to SeQuent Please



### AGENT Japan SV Study<sup>6</sup>

AGENT consistently showed lower levels of late lumen loss compared to SeQuent Please



# Modern PCI



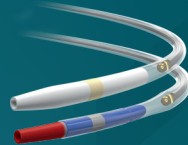
A tailored approach to each lesion with the most complete portfolio.



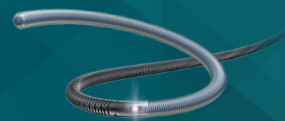
**AVVIGO**  
Guidance System II



**OPTICROSS HD**  
60 MHz Coronary Imaging Catheter



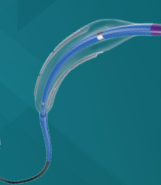
**COMET II**  
Pressure Guidewire



**ROTAPRO**  
Rotational Atherectomy System



**WOLVERINE**  
Cutting Balloon Dilatation Device



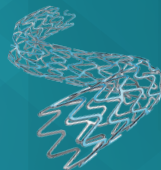
**NC EMERGE**  
FICA Dilatation Catheter



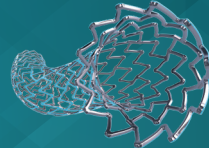
**MAMBA**  
Microcatheter Family



**SYNERGY XD**  
Drug-Eluting Platinum-Chromium Coronary Stent System



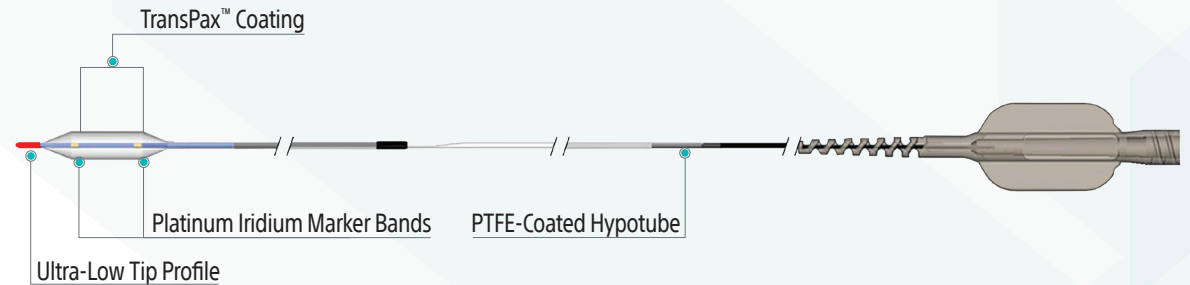
**SYNERGY MEGATRON**  
Drug-Eluting Platinum-Chromium Coronary Stent System



**AGENT**  
Patent-Free Drug-Coated Balloon



## AGENT™ Drug-Coated Balloon



### Balloon Length (mm)

ø (mm)	12	15	20	30
2.00	H749 3922220121 0	H749 3922220151 0	H749 3922220201 0	H749 3922220301 0
2.25	H749 3922222121 0	H749 3922222151 0	H749 3922222201 0	H749 3922222301 0
2.50	H749 3922225121 0	H749 3922225151 0	H749 3922225201 0	H749 3922225301 0
2.75	H749 3922227121 0	H749 3922227151 0	H749 3922227201 0	H749 3922227301 0
3.00	H749 3922230121 0	H749 3922230151 0	H749 3922230201 0	H749 3922230301 0
3.50	H749 3922235121 0	H749 3922235151 0	H749 3922235201 0	H749 3922235301 0
4.00	H749 3922240121 0	H749 3922240151 0	H749 3922240201 0	H749 3922240301 0