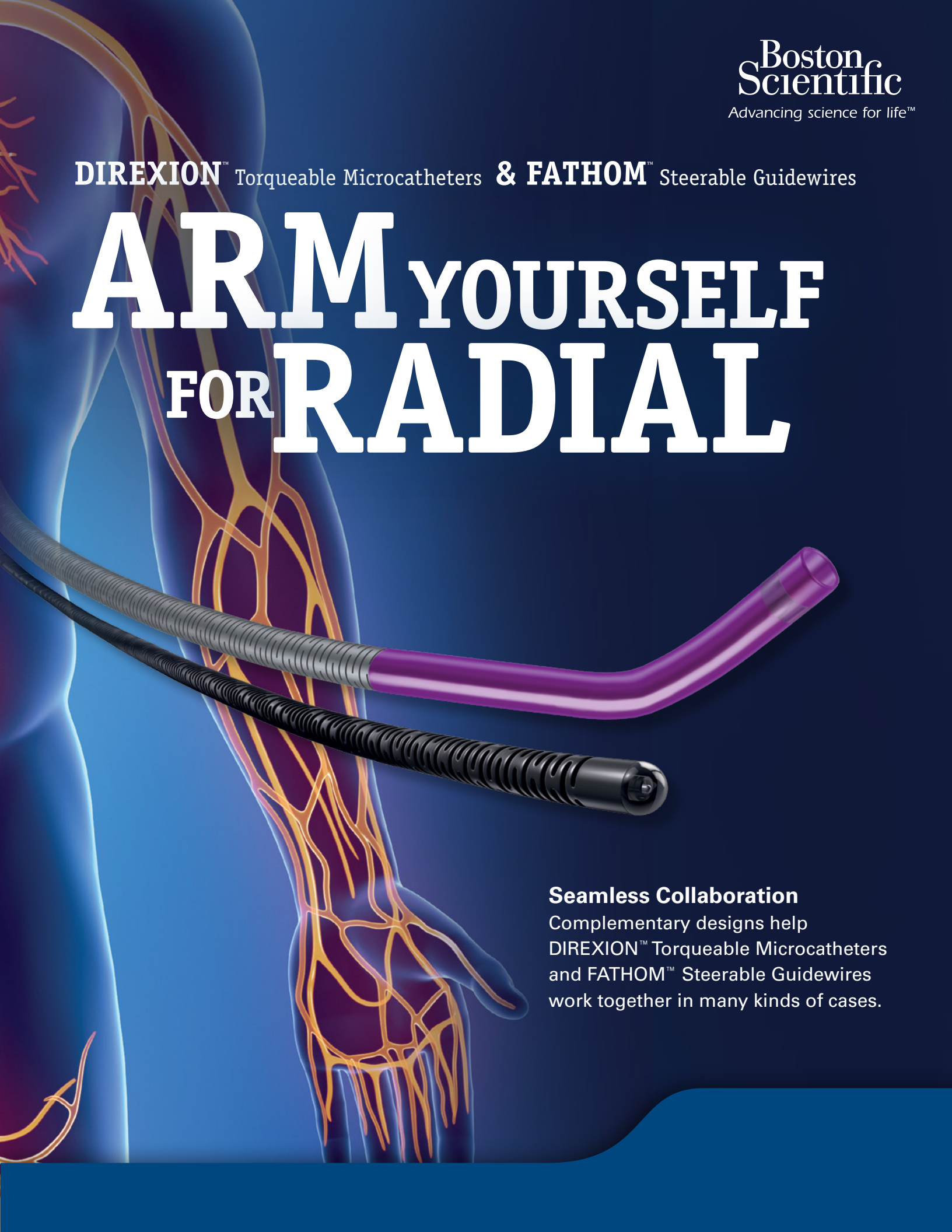


DIREXION™ Torqueable Microcatheters & **FATHOM™** Steerable Guidewires

ARM YOURSELF FOR RADIAL



Seamless Collaboration

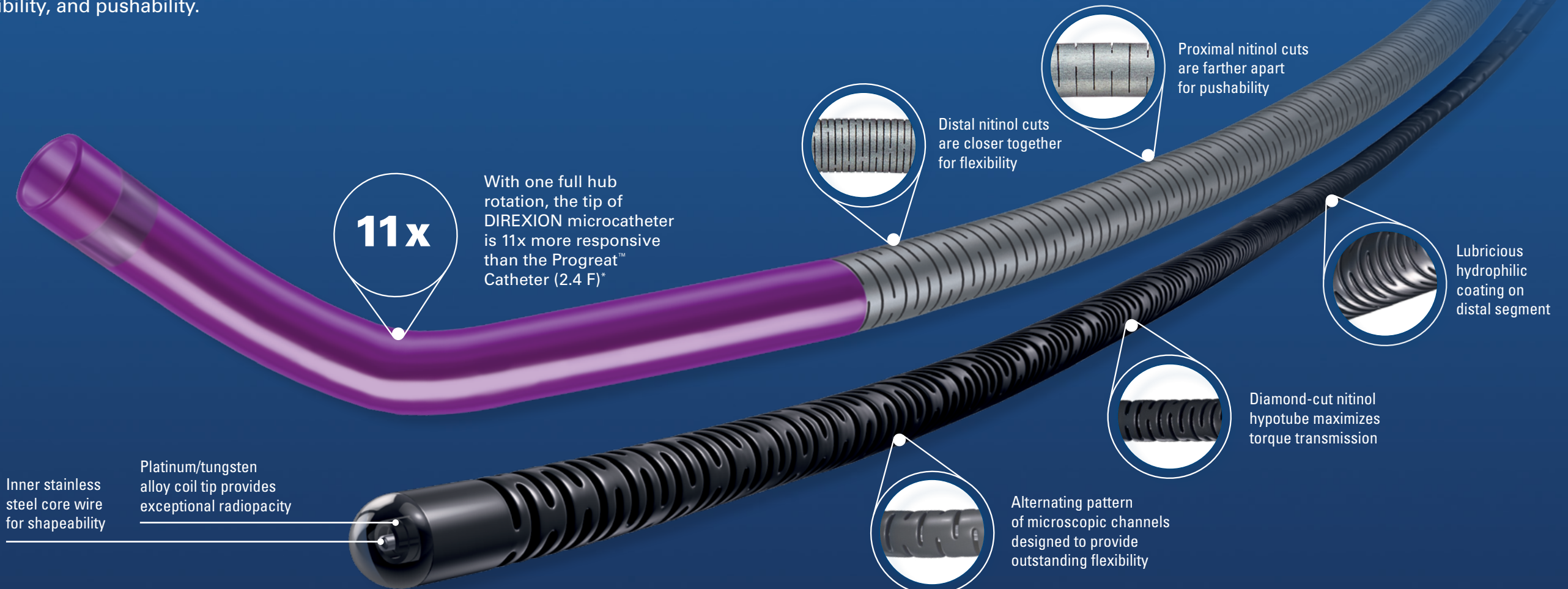
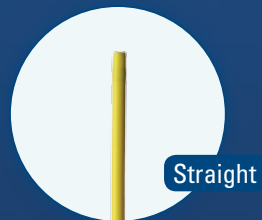
Complementary designs help
DIREXION™ Torqueable Microcatheters
and FATHOM™ Steerable Guidewires
work together in many kinds of cases.

One Technology, Powerful Combination

DIREXION™ Torqueable Microcatheters

Our newly enhanced Direxion microcatheters deliver unrivaled torqueability while maintaining excellent trackability, flexibility, and pushability.

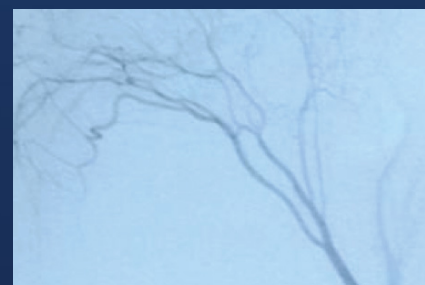
DIREXION
Diverse tip shapes facilitate access to challenging treatment sites



Why Flow Rates Matter – Image Quality



3.5 mL/s at 1000 PSI



3.5 mL/s at 1200 PSI

Our line of radial microcatheters and guidewires delivers the torque, shapes, and lengths required to achieve successful distal access. This unique family is specifically engineered to work together in multiple combinations to help you perform more radial and trans-radial procedures on more patients with better outcomes.

FATHOM™ Steerable Guidewires

Designed to transmit turn-for-turn torque to enhance responsiveness and maneuverability, Fathom Steerable Guidewires revolutionize access to even the most tortuous vasculature with an angled, pre-shaped tip and both 200 and 215 cm lengths that are ideal for radial and trans-radial access.

*Bench testing performed by Boston Scientific Corporation. Data on file. N=5. Bench test results may not necessarily be indicative of clinical performance.

DIREXION™ AND DIREXION HI-FLO™

Torqueable Microcatheter Family

FATHOM™

Steerable Guidewires

Direxion Microcatheter

UPN	Order Number	Usable Length	Tip Shape	RO Markers
M001195220	19-522	155	Straight	1
M001195250	19-525	155	Bern	1
M001195280	19-528	155	J	1
M001195310	19-531	155	Swan	1
M001195330	19-533	155	Straight	2
M001195350	19-535	155	Bern	2

Direxion HI-FLO Microcatheter

M001195420	19-542	155	Straight	1
M001195450	19-545	155	Bern	1
M001195480	19-548	155	J	1
M001195510	19-551	155	Swan	1

Direxion Microcatheter Pre-Loaded System with Fathom™ -16 Guidewire

UPN	Order Number	Direxion Usable Length	Direxion Tip Shape	Fathom-16 Guidewire Overall length
M001195620	19-562	155	Straight	180
M001195650	19-565	155	Bern	180
M001195670	19-567	130	Bern (2RO)	180

Direxion Microcatheter HI-FLO Pre-Loaded System with Fathom-16 Guidewire

M001195720	19-572	155	Straight	180
M001195750	19-575	155	Bern	180

Direxion Microcatheter Pre-Loaded System with Transend™ -14 Guidewire

UPN	Order Number	Direxion Usable Length	Direxion Tip Shape	Transend-14 Guidewire Overall length
M001195850	19-585	155	Bern	190

New Tip Shapes and Lengths Fathom™ -16 Steerable Guidewires

UPN	Order Number	Total Length (cm)	Nitinol Tip Length (cm)	Distal Floppy Tip Length (cm)	Proximal/Distal O.D. (inches)	Tip Shape
M001509120	50-912	180	25	10	0.016	Angled
M001509200	50-920	200	25	10	0.016	Straight
M001509210	50-921	200	25	10	0.016	Angled
M001509300	50-930	215	25	10	0.016	Straight
M001509310	50-931	215	25	10	0.016	Angled

Fathom™ -16 Steerable Guidewires

M001509100	50-910	180	25	10	0.016	Straight
M001509110	50-911	180	35	20	0.016	Straight

Fathom™ -14 Steerable Guidewires

M001508100	50-810	200	35	10	0.014	Straight
M001508110	50-811	200	35	10	0.014	Angled
M001508140	50-814	300	35	10	0.014	Straight
M001508150	50-815	300	35	10	0.014	Angled

All Direxion and Direxion HI-FLO Torqueable Microcatheters are compatible with most chemotherapy agents, alcohol, and DMSO. All Direxion and Direxion HI-FLO Torqueable Microcatheters have dynamic burst pressures of 1200 PSI.

Fathom-14 Steerable Guidewire

CAUTION: Federal law (USA) restricts this device to sale by or on the order of a physician. Rx only. Prior to use, please see the complete "Directions for Use" for more information on Indications, Contraindications, Warnings, Precautions, Adverse Events, and Operator's Instructions.

INTENDED USE/INDICATIONS FOR USE: The FATHOM-14 Steerable Guidewire is intended for general intravascular use in the peripheral vasculature. It can be used to selectively introduce and position catheters and other interventional devices within the peripheral vasculature. This device should be used only by physicians trained in percutaneous, intravascular techniques and procedures. **CONTRAINDICATIONS:** None known. **WARNINGS:** The FATHOM Steerable Guidewire is not intended for use in the coronary vasculature or the neuro vasculature. **ADVERSE EVENTS:** Complications attributed to endovascular procedures are the following: • Vessel trauma • Vessel damage • Embolism (catheter/device, air bubble, plaque, thrombus, air embolism, thromboembolism) • Pseudoaneurysm • Seizure/stroke • Vessel dissection • Hematoma at the puncture site • Nerve injury • Infection • Perforation of the vessel • Vessel spasm • Hemorrhage • Vascular thrombosis • Vessel occlusion • Death • Bleeding • Failed treatment • Inability to position guidewire • Damage to the catheter

Fathom-16 Steerable Guidewire

CAUTION: Federal law (USA) restricts this device to sale by or on the order of a physician. Rx only. Prior to use, please see the complete "Directions for Use" for more information on Indications, Contraindications, Warnings, Precautions, Adverse Events, and Operator's Instructions.

INTENDED USE/INDICATIONS FOR USE: The FATHOM-16 Steerable Guidewire is intended for general intravascular use in the peripheral vasculature. It can be used to selectively introduce and position catheters and other interventional devices within the peripheral vasculature. This device should be used only by physicians trained in percutaneous, intravascular techniques and procedures. **CONTRAINDICATIONS:** None known. **WARNINGS:** The FATHOM Steerable Guidewire is not intended for use in the coronary vasculature or the neuro vasculature. **ADVERSE EVENTS:** Complications attributed to endovascular procedures are the following: • Vessel trauma • Vessel damage • Embolism (catheter/device, air bubble, plaque, thrombus, air embolism, thromboembolism) • Pseudoaneurysm • Seizure/stroke • Vessel dissection • Hematoma at the puncture site • Nerve injury • Infection • Perforation of the vessel • Vessel spasm • Hemorrhage • Vascular thrombosis • Vessel occlusion • Death • Bleeding • Failed treatment • Inability to position guidewire • Damage to the catheter

DIREXION™ AND DIREXION HI-FLO™

CAUTION: Federal law (USA) restricts this device to sale by or on the order of a physician. Rx only. Prior to use, please see the complete "Directions for Use" for more information on Indications, Contraindications, Warnings, Precautions, Adverse Events, and Operator's Instructions.

INTENDED USE/INDICATIONS FOR USE: The Direxion and Direxion HI-FLO Torqueable Microcatheters are intended for peripheral vascular use. The pre-loaded Fathom and Transend Guidewires can be used to selectively introduce and position the microcatheter in the peripheral vasculature. The microcatheter can be used for controlled and selective infusion of diagnostic, embolic, or therapeutic materials into the vessel. **CONTRAINDICATIONS:** None known. **WARNINGS:** • Never advance or withdraw an intravascular device against resistance until the cause of resistance is determined by fluoroscopy. Movement of the microcatheter or guidewire against resistance may result in damage or separation of the microcatheter or guidewire tip, or vessel perforation. • This Direxion Microcatheter family is not intended for use in the coronary vasculature or neurovasculature. • The Direxion HI-FLO Microcatheter is not designed for the delivery of embolic coils. • Use of excessive force to manipulate the microcatheter against resistance can cause a fracture in the nitinol shaft. Take care not to over-torque the microcatheter, and to relieve any tension before withdrawal by rotating the microcatheter in the opposite direction. **PRECAUTIONS:** • This device should be used only by physicians thoroughly trained in percutaneous, intravascular techniques and procedures. • Do not introduce the microcatheter without guidewire support as this may cause damage to the proximal shaft of the catheter. • Because the microcatheter may be advanced into narrow sub-selective vasculature, repeatedly assure that the microcatheter has not been advanced so far as to interfere with its removal. **ADVERSE EVENTS:** The Adverse Events include, but are not limited to: • Allergic reaction • Death • Embolism • Hemorrhage/Hematoma • Infection • Pseudoaneurysm • Stroke • Vascular thrombosis • Vessel occlusion • Vessel spasm • Vessel trauma (dissection, perforation, rupture)

Direxion, Direxion HI-FLO, and Fathom are unregistered or registered trademarks of Boston Scientific Corporation or its affiliates. All other trademarks are property of their respective owners.

Boston Scientific
Advancing science for life™

Peripheral Interventions

300 Boston Scientific Way
Marlborough, MA 01752-1234
www.bostonscientific.com

To order product or for more information
contact customer service at 1.888.272.10

© 2017 Boston Scientific Corporation
or its affiliates. All rights reserved.

PI-498813-AA OCT2017