



SpyGlass™ DS II Direct Visualization System

featuring Sight Shield Technology

See, diagnose, and treat.

The complete system of high-resolution imaging and accessory devices designed for pancreaticobiliary stone and stricture management.



Introducing the SpyGlass™ DS II Direct Visualization System

Boston
Scientific

The SpyGlass DS II Direct Visualization System with Sight Shield Technology enables high resolution imaging of the bile and pancreatic ducts during endoscopic retrograde cholangiopancreatography (ERCP). Complementary SpyGlass tools enable targeted biopsies, stone fragmentation, and foreign body removal. Compared to a traditional ERCP, this may result in:



A more efficient
evaluation of the
patient¹



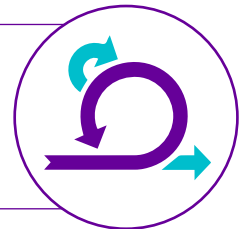
Earlier patient
treatment¹



A reduction in
additional testing and
repeat procedures¹

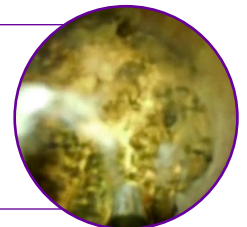
85%
ALTERED

In a clinical study of 298 patients, **clinical management was altered in 85% of patients** undergoing diagnostic ERCP with Cholangioscopy.²

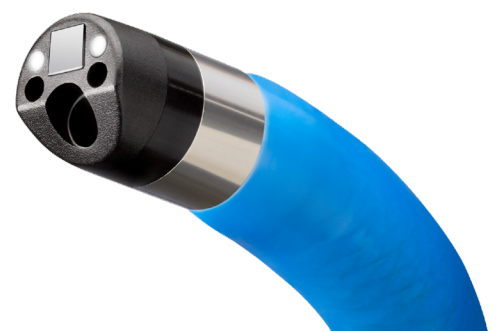


89%
SUCCESS

Demonstrated 89% stone clearance after a single ERCP session³ may allow patients to avoid repeat endoscopic interventions or more invasive procedures to treat difficult biliary and pancreatic stones.



The SpyGlass DS II Direct Visualization System featuring Sight Shield technology now delivers an extra layer of protection for the imaging sensors, without changing the look, feel, or performance of SpyGlass DS.



The **SpyGlass™ DS II Direct Visualization System** includes an expansive portfolio of devices that deliver innovative diagnostic and therapeutic approaches to biliary stone and stricture management to help deliver successful outcomes in complex procedures. These devices include:



Autolith™ Touch EHL System

The Autolith Touch 1.9Fr, 375cm EHL Probe and Autolith Touch EHL Generator are available to help physicians manage large biliary stones.

Slimline SIS GI™ Laser Fiber and VersaPulse® Holmium Lasers

Designed to help navigate difficult anatomies in the management of biliary stones and benign or malignant neoplasms.

SpyBite™ Max Biopsy Forceps

Helps enable greater tissue acquisition* which may result in faster more accurate diagnosis of malignancies.³

SpyGlass™ Retrieval Basket

A durable 4-wire nitinol basket designed to grasp biliary and pancreatic stones while maintaining its shape in a difficult anatomy.

SpyGlass™ Retrieval Snare

Designed to efficiently capture and remove foreign bodies – such as migrated plastic stents – in the biliary and pancreatic ducts.

*The testing was performed by or on behalf of BSC. Data on file. Bench test results may not necessarily be indicative of clinical performance.



The Complete Solution for Cholangioscopy

Boston
Scientific

Worldwide, the SpyGlass™ DS II Direct Visualization System has been used to help deliver quality outcomes in over **200K challenging cases** in more than **85 countries**.



Proven
SpyGlass DS
Performance



Portfolio
Breadth



Physician & Staff
Education



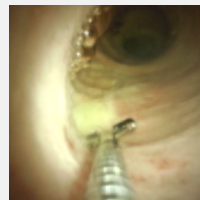
People &
Procedural
Support



Supply Chain
Stability



Environmental
Sustainability



Watch our case studies:

[Watch now](#)



Learn more about SpyGlass DS II
Direct Visualization System:

[Learn more](#)

SpyGlass™ DS System

Order Number	Product Description	
M00546650	SpyGlass™ DS Digital Controller	Each
M00546610	SpyScope™ DS II Access & Delivery Catheter	Each

SpyGlass™ DS Accessory Devices

Order Number	Product Description	Cable Diameter (in/mm)	Jaw Outer Diameter (mm)	Working Length (cm)	Required Endoscope Working Channel (mm)
M00546470	SpyBite™ Max Biopsy Forceps	0.039 / 1.0	1	286	1.2
M00546270	SpyBite™ Biopsy Forceps	0.039 / 1.0	1	286	1.2
M00546550	SpyGlass™ Retrieval Basket	0.039 / 1.0	N/A	286	1.2
M00546560	SpyGlass™ Retrieval Snare	0.039 / 1.0	N/A	286	1.2

Biliary EHL Probe

Order Number	Product Description
M00546620	1.9 Fr 375cm Biliary EHL Probe

Autolith™ Touch System

Order Number	Product Description
M005466800	Autolith™ Touch EHL Generator

Autolith™ Touch System Accessories

Order Number	Product Description
M00546750	Autolith™ Touch Extender Cable
M00546760	Autolith™ Touch Foot Pedal

Slimline SIS GI™ Laser Fiber and VersaPulse® Holmium Lasers

Order Number	Product Description	Units
0644-007-01	1.8Fr SlimLine GITM Probe	Box of 3
GA-0006000	VersaPulse P20 Holmium Laser*	Each

*Includes generator, footswitch, fiber inspection scope, two laser safety glasses, one laser safety goggles, one remote interlock connector and one power cable.

1. Draganov et al. Diagnostic accuracy of conventional and cholangioscopy-guided sampling of indeterminate biliary lesions at the time of ERCP: a prospective, long-term follow-up study. *Gastrointest Endosc* 2012; 75(2):347-353.
2. Ramchandani et al. Single Operator Cholangioscopy for the evaluation and diagnosis of Indeterminate biliary strictures - Results from a Large Multinational Registry. *DDW* 2017.
3. Shah et al. Performance of a full disposable, digital, single-operator cholangiopancreatroscope. *Endoscopy* 2017; 49: 651-658

All photographs taken by Boston Scientific.

All trademarks are the property of their respective owners.

CAUTION: The law restricts these devices to sale by or on the order of a physician.

Indications, contraindications, warnings, and instructions for use can be found in the product labelling supplied with each device or at www.IFU-BSCI.com.

Products shown for INFORMATION purposes only and may not be approved or for sale in certain countries. This material not intended for use in France. RX Only.

2023 Copyright © Boston Scientific Corporation or its affiliates. All rights reserved.

ENDO-3242001-AD