

Hemostasis Solutions

**Boston
Scientific**
Advancing science for life™

Boston Scientific is committed to improving patient care in the management of gastrointestinal bleeding.

Through innovation and continuous educational support, we offer a wide range of therapeutic options including injection therapy, thermal therapy, mechanical therapy and ligation.



Resolution™ Clip

Hemoclip



MR Conditional
per ASTM F2503

THE RESOLUTION CLIP IS INTENDED TO BE USED FOR*

- Hemostasis within the GI tract
 - > Prophylactic clipping
- Endoscopic marking
- Closure of GI tract luminal perforations
- Anchoring jejunal feeding tubes



REOPENING CAPABILITY

The radiopaque Resolution Clip is **engineered to enable opening and closing up to 5 times** prior to deployment, aiding in repositioning of the clip**



EXPANDED INDICATION

- Resolution and Resolution 360™ Clip are currently the only hemostasis clip indicated for prophylactic clipping to reduce the risk of delayed bleeding post lesion resection
- Prophylactic clipping of large postpolypectomy induced ulcers can reduce delayed bleeds by more than 80% and may help patients avoid hospitalization, blood transfusions, repeat colonoscopies and surgical procedures, reducing overall costs¹

USER-FRIENDLY HANDLE

Designed to deliver a familiar actuation for opening and closing the jaws. Provides **tactile** and **audible** (1st click, 2nd click) feedback upon closing of jaws, indicating that the clip is being deployed



OVER-SHEATH

OVER-SHEATH GRIP

Stopper

The Resolution Clip has impacted more than 2.5 million patient lives

June 29, 2004:
First Resolution
Clip sold

2009: More than
1,000,000 Resolution
Clips sold

December 2012:
MR Conditional
Commercially Launched

December 2014:
Prophylactic clipping
indication in the US

March 2016: More than 7
million Resolution Clips placed
over 11 years, featured in
over 280 published studies

*See detailed information in the "Instructions for Use" supplied with the product.
**Re-opening and closing capability may be limited by clinical circumstances and patient anatomy, among other factors.

Resolution 360™ Clip

Hemoclip

RESOLUTION 360 CLIP builds on the strong clinical and economic track record established by Resolution™ Clip and offers new benefits to providers and patients including controlled clip placement and shorter procedure times

NEW ERGONOMIC HANDLE

Designed with same tactile and deployment feedback as Resolution™ Clip

ROTATION CONTROL KNOB

Allows for 1 to 1, **nurse/technician controlled rotation**

BRAIDED CATHETER

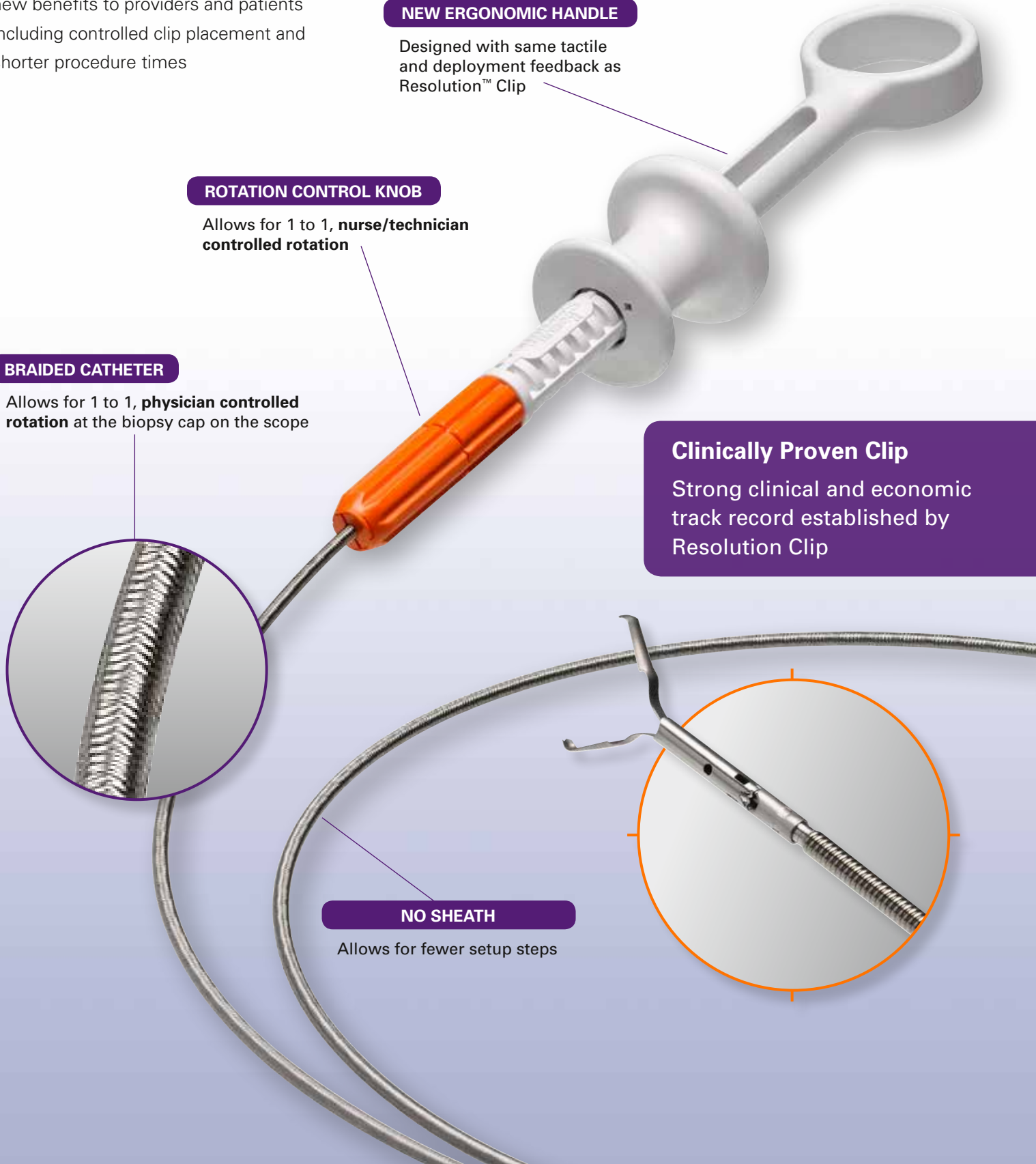
Allows for 1 to 1, **physician controlled rotation** at the biopsy cap on the scope

Clinically Proven Clip

Strong clinical and economic track record established by Resolution Clip

NO SHEATH

Allows for fewer setup steps



Speedband Superview Super 7™

Multiple Band Ligator

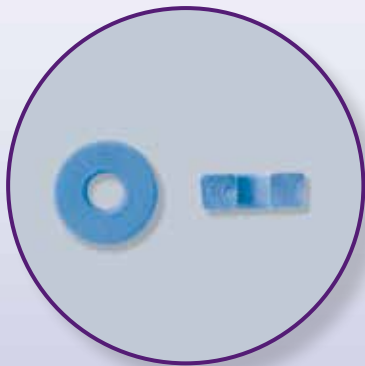


ERGONOMIC HANDLE WITH PRE-LOADED WIRE AND SCOPE FASTENER

- Handle attachment engineered to offer operator comfort
- Audible click, tactile and visual stop to confirm band deployment

CLEAR LIGATING UNIT WITH REAR-MOUNTED BANDS

- Provides visibility for rapid navigation and pathology identification
- Single string deployment allows excellent suction for tissue capture, band placement and band retention
- Alert band offers a visual clue that only one band remains



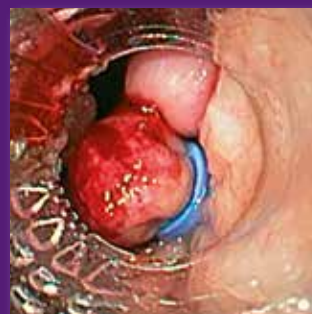
SQUARE MOLDED BANDS

- Designed for consistent shape and reliable performance
- Latex-free material designed to reduce the risk of allergic reactions

Excellent Visibility and Suction



Single and Multiple Variceal Band Ligation



Interject™ Injection Therapy Needle Catheter

Sclerotherapy Needles

TORTUOUS ANATOMY


Unique star-shaped inner catheter design* helps promote reliable needle actuation in tortuous anatomy (even after kinking)

EFFICIENT ACCESS

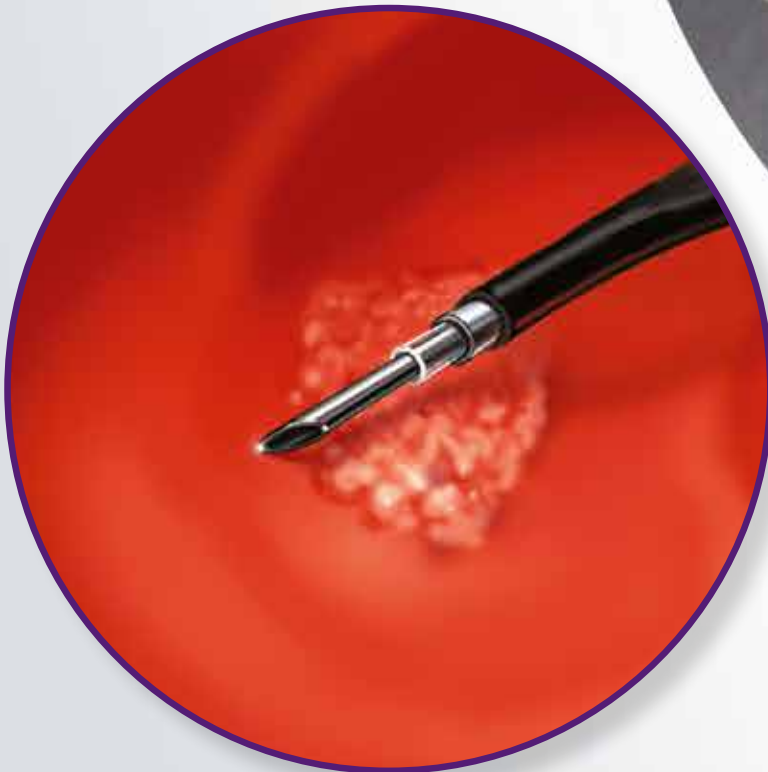
Pushable sheath construction designed to facilitate advancement through difficult pathways to remote anatomy

SMOOTH NEEDLE PENETRATION

Beveled needle designed to facilitate injection



Smooth beveled needle designed to facilitate injection



Injection Gold Probe™ & Gold Probe™

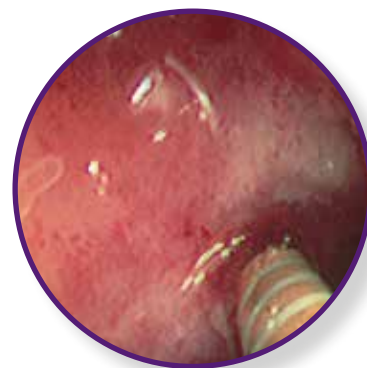
Bipolar Electrohemostasis Catheters

PROPRIETARY DISTAL TIP DESIGN

- Rounded Gold distal tip is designed to provide conductivity, uniform burn, and effective coagulation in various tip positions
- Precision spacing of electrode pairs helps control coagulation depth

FIRM CATHETER SHAFT FOR TAMPONADE

- Designed to reduce kinking, facilitating advancement and helping to provide better *en face* and tangential tamponade
- Hemoglide coating helps reduce surface friction to facilitate passage through the endoscope



A 10F (3.3 mm) Injection Gold Probe Catheter is used to inject a vasoconstrictor around the vessel.

UNIQUE INTEGRATED INJECTION AND THERMAL HEMOSTASIS CAPABILITIES

- Designed to help reduce catheter exchanges and procedural time
- Engineered for smooth, consistent needle extension, even in difficult endoscope positions
- Integrated irrigation facilitating manual or mechanical irrigation for visibility

INJECTION GOLD PROBE HANDLE



Ordering Information

Resolution™ Clip

Order Number	Working Length (cm)	Minimum Working Channel (mm)	Clip Opening (mm)	Units
M00522600	155	2.8	11	Box 1
M00522601	155	2.8	11	Box 10
M00522602	155	2.8	11	Box 20
M00522610	235	2.8	11	Box 1
M00522611	235	2.8	11	Box 10
M00522612	235	2.8	11	Box 20

Resolution 360™ Clip

Order Number	Working Length (cm)	Units
M00521240	155	Box 1
M00521241	155	Box 10
M00521242	155	Box 20
M00521230	235	Box 1
M00521231	235	Box 10
M00521232	235	Box 20

Injection Gold Probe™

Order Number	Description	Minimum Working Channel	Working Length	Needle Size Gauge	Connector
M00560150	7Fr Injection Gold Probe	2.8mm	210cm	25	Standard
M00560160	10Fr Injection Gold Probe	3.7mm	210cm	25	Standard

Gold Probe™

Order Number	Description	Minimum Working Channel	Working Length	Needle Size Gauge	Connector
M00560070	7Fr Gold Probe	2.8mm	300cm	N/A	Standard
M00560071	7Fr Gold Probe (Box 5)	2.8mm	300cm	N/A	Standard
M00560100	10Fr Gold Probe	3.7mm	300cm	N/A	Standard
M00560101	10Fr Gold Probe (Box 5)	3.7mm	300cm	N/A	Standard
M00560220	7Fr Gold Probe	2.8mm	350cm	N/A	Standard

Interject™ Contrast Single-Use Injection Therapy Needle Catheters

Order Number	Sheath O.D. (mm)	Working Length (cm)	Sheath Design	Needle Gauge	Maximum Needle Extension Length (mm)	Units
M00518151	1.8	200	Contrast	23	4	Box 5
M00518161	1.8	200	Contrast	25	4	Box 5
M00518251	1.8	200	Contrast	23	6	Box 5
M00518261	1.8	200	Contrast	25	6	Box 5
M00518351	2.3	240	Contrast	23	4	Box 5
M00518361	2.3	240	Contrast	25	4	Box 5

Interject Clear Single-Use Injection Therapy Needle Catheters

Order Number	Sheath O.D. (mm)	Working Length (cm)	Sheath Design	Needle Gauge	Maximum Needle Extension Length (mm)	Units
M00518101	1.8	200	Clear	23	4	Box 5
M00518111	1.8	200	Clear	25	4	Box 5
M00518301	2.3	240	Clear	23	4	Box 5
M00518311	2.3	240	Clear	25	4	Box 5

Speedband Superview Super 7™

Order Number	Description	Number of Bands	Units
M00542251	Multiple Band Ligator	7	Box 2
M00542253	Multiple Band Ligator	7	Box 4

Boston Scientific

Boston Scientific Corporation
300 Boston Scientific Way
Marlborough, MA 01752
www.bostonscientific.com/gastro

1. Liaquat H, Rohn E, Rex DK. Prophylactic clip closure reduced the risk of delayed postpolypectomy hemorrhage: experience in 277 clipped large sessile or flat colorectal lesions and 247 control lesions. *Gastrointestinal Endoscopy*, 2013 Mar;77(3):401-7. doi: 10.1016/j.gie.2012.10.024. Epub 2013 Jan 11.

All trademarks are the property of their respective owners.
Indications, Contraindications, Warnings and Instructions for Use can be found in the product labeling supplied with each device.
CAUTION: Federal (USA) law restricts this device to sale by or on the order of a physician.

© 2016 Boston Scientific Corporation or its affiliates. All rights reserved.
ENDO-319509-AB May 2016